

**LAKEWATCH Report for Forked Creek in Sarasota County**  
**Watershed Region: West Central**  
**Using Data Downloaded 1/31/22**

**Introduction for River/Streams**

This report summarizes data collected on systems that have been part of the LAKEWATCH program. Data are from the period of record for individual systems. The first part of this summary lists background data for each system, the second part lists the long-term data geometric means and ranges and the final part are the trend plots for nutrients, chlorophyll, and Secchi depth. **Plots were only made for systems with five or more years of data.**

For decades Florida has had a narrative nutrient water quality criterion in place to protect Florida’s waters against nutrient over-enrichment. In 2009, the Florida Department of Environmental Protection (FDEP) initiated rulemaking and, by 2011, adopted what would be the first set of statewide numeric nutrient standards for Florida’s waters. By 2015, almost all the remaining waters in Florida have numeric nutrient standards (see for FDEP Regulation Nutrient Criteria’s for: Streams, spring vents: <https://www.flrules.org/gateway/RuleNo.asp?title=SURFACE%20WATER%20QUALITY%20STANDARDS&ID=62-302.531>).



Figure 1. Map showing nutrient thresholds areas for streams set forth by FDEP.

Table 1. The nutrient thresholds for streams are listed in table below along with the map showing zones.

Nutrient Watershed Region	Total Phosphorus Nutrient Threshold <sup>1</sup>	Total Nitrogen Nutrient Threshold <sup>1</sup>
Panhandle West	60 µg/L	670 µg/L
Panhandle East	180 µg/L	1030 µg/L
North Central	300 µg/L	1870 µg/L
Peninsular	120 µg/L	1540 µg/L
West Central	490 µg/L	1650 µg/L
South Florida	No numeric nutrient threshold. The narrative criterion in paragraph 62-302.530(47)(b), F.A.C., applies.	No numeric nutrient threshold. The narrative criterion in paragraph 62-302.530(47)(b), F.A.C., applies.

<sup>1</sup>These values are annual geometric mean concentrations not to be exceeded more than once in any three calendar year periods.

## Base File Data for River/Streams: Definitions

- **County:** Name of county in which the system resides.
- **Name:** Stream name that LAKEWATCH uses for the system.
- **GNIS Number:** Number created by USGS's Geographic Names Information System.
- **Water Body Type:** Four different types of systems; lakes, estuaries, river/streams and springs.
- **Period of Record (years):** Number of years a system has been in the LAKEWATCH program.
- **Latitude and Longitude:** Coordinates identifying the exact location of station 1 for each system.

Table 2. Base File Data.

County	Sarasota
Name	Forked Creek
GNIS Number	
Water Body Type	River/Stream
Period of Record (years, range)	2 (2004 to 2005)
Latitude	27.085
Longitude	-82.3778

## Long-Term Data for River/Streams: Definitions

The following long-term data are the primary trophic state parameters collected by LAKEWATCH volunteers and classification variables color and specific conductance (LAKEWATCH recently began analyzing samples quarterly for color and specific conductance):

- **Total Phosphorus ( $\mu\text{g/L}$ ):** The nutrient most often limiting growth of plant/algae.
- **Total Nitrogen ( $\mu\text{g/L}$ ):** Another nutrient needed for aquatic plant/algae growth but only limiting when nitrogen to phosphorus ratios are generally less than 10.
- **Chlorophyll-uncorrected ( $\mu\text{g/L}$ ):** Chlorophyll concentrations are used to measure relative abundances of open water algal population.
- **Secchi (ft), Secchi (m):** Secchi measurements are estimates of water clarity.
- **Color (Pt-Co Units):** LAKEWATCH measures true color, which is the color of the water after particles have been filter out.
- **Specific Conductance ( $\mu\text{S/cm@25}^\circ\text{C}$ ):** Measurement of the ability of water to conduct electricity and can be used to estimate the amount of dissolved materials in water.

Table 3. Long-term trophic state data collected monthly by LAKEWATCH volunteers and color and specific conductance (collected quarterly).

Parameter	Minimum and Maximum Annual Geometric Means	Grand Geometric Mean (Sampling years)
Total Phosphorus ( $\mu\text{g/L}$ )	207 - 259	232 (2)
Total Nitrogen ( $\mu\text{g/L}$ )	688 - 831	756 (2)
Chlorophyll- uncorrected ( $\mu\text{g/L}$ )	13 - 24	18 (2)
Secchi (ft)	3 - 3.4	3.2 (2)
Secchi (m)	0.9 -1	1 (2)
Color (Pt-Co Units)	16 - 24	20 (2)
Specific Conductance ( $\mu\text{S/cm@25 C}$ )	27000 - 27000	27000 (1)

**LAKEWATCH Report for Saddle Creek-1 in Sarasota County**  
**Watershed Region: West Central**  
**Using Data Downloaded 1/31/22**

**Introduction for River/Streams**

This report summarizes data collected on systems that have been part of the LAKEWATCH program. Data are from the period of record for individual systems. The first part of this summary lists background data for each system, the second part lists the long-term data geometric means and ranges and the final part are the trend plots for nutrients, chlorophyll, and Secchi depth. **Plots were only made for systems with five or more years of data.**

For decades Florida has had a narrative nutrient water quality criterion in place to protect Florida’s waters against nutrient over-enrichment. In 2009, the Florida Department of Environmental Protection (FDEP) initiated rulemaking and, by 2011, adopted what would be the first set of statewide numeric nutrient standards for Florida’s waters. By 2015, almost all the remaining waters in Florida have numeric nutrient standards (see for FDEP Regulation Nutrient Criteria’s for: Streams, spring vents:

<https://www.flrules.org/gateway/RuleNo.asp?title=SURFACE%20WATER%20QUALITY%20STANDARDS&ID=62-302.531>).



Figure 1. Map showing nutrient thresholds areas for streams set forth by FDEP.

Table 1. The nutrient thresholds for streams are listed in table below along with the map showing zones.

Nutrient Watershed Region	Total Phosphorus Nutrient Threshold <sup>1</sup>	Total Nitrogen Nutrient Threshold <sup>1</sup>
Panhandle West	60 µg/L	670 µg/L
Panhandle East	180 µg/L	1030 µg/L
North Central	300 µg/L	1870 µg/L
Peninsular	120 µg/L	1540 µg/L
West Central	490 µg/L	1650 µg/L
South Florida	No numeric nutrient threshold. The narrative criterion in paragraph 62-302.530(47)(b), F.A.C., applies.	No numeric nutrient threshold. The narrative criterion in paragraph 62-302.530(47)(b), F.A.C., applies.

<sup>1</sup>These values are annual geometric mean concentrations not to be exceeded more than once in any three calendar year periods.

## Base File Data for River/Streams: Definitions

- **County:** Name of county in which the system resides.
- **Name:** Stream name that LAKEWATCH uses for the system.
- **GNIS Number:** Number created by USGS's Geographic Names Information System.
- **Water Body Type:** Four different types of systems; lakes, estuaries, river/streams and springs.
- **Period of Record (years):** Number of years a system has been in the LAKEWATCH program.
- **Latitude and Longitude:** Coordinates identifying the exact location of station 1 for each system.

Table 2. Base File Data.

County	Sarasota
Name	Saddle Creek-1
GNIS Number	
Water Body Type	River/Stream
Period of Record (years, range)	1 (2007 to 2007)
Latitude	27.2664
Longitude	-82.3857

## Long-Term Data for River/Streams: Definitions

The following long-term data are the primary trophic state parameters collected by LAKEWATCH volunteers and classification variables color and specific conductance (LAKEWATCH recently began analyzing samples quarterly for color and specific conductance):

- **Total Phosphorus ( $\mu\text{g/L}$ ):** The nutrient most often limiting growth of plant/algae.
- **Total Nitrogen ( $\mu\text{g/L}$ ):** Another nutrient needed for aquatic plant/algae growth but only limiting when nitrogen to phosphorus ratios are generally less than 10.
- **Chlorophyll-uncorrected ( $\mu\text{g/L}$ ):** Chlorophyll concentrations are used to measure relative abundances of open water algal population.
- **Secchi (ft), Secchi (m):** Secchi measurements are estimates of water clarity.
- **Color (Pt-Co Units):** LAKEWATCH measures true color, which is the color of the water after particles have been filter out.
- **Specific Conductance ( $\mu\text{S/cm@25}^\circ\text{C}$ ):** Measurement of the ability of water to conduct electricity and can be used to estimate the amount of dissolved materials in water.

Table 3. Long-term trophic state data collected monthly by LAKEWATCH volunteers and color and specific conductance (collected quarterly).

Parameter	Minimum and Maximum Annual Geometric Means	Grand Geometric Mean (Sampling years)
Total Phosphorus ( $\mu\text{g/L}$ )	1297 - 1297	1297 (1)
Total Nitrogen ( $\mu\text{g/L}$ )	3570 - 3570	3570 (1)
Chlorophyll- uncorrected ( $\mu\text{g/L}$ )	23 - 23	23 (1)
Secchi (ft)	3 - 3	3 (1)
Secchi (m)	0.9 -0.9	0.9 (1)
Color (Pt-Co Units)	-	(0)
Specific Conductance ( $\mu\text{S/cm@25 C}$ )	-	(0)

**LAKEWATCH Report for Saddle Creek-2 in Sarasota County**  
**Watershed Region: West Central**  
**Using Data Downloaded 1/31/22**

**Introduction for River/Streams**

This report summarizes data collected on systems that have been part of the LAKEWATCH program. Data are from the period of record for individual systems. The first part of this summary lists background data for each system, the second part lists the long-term data geometric means and ranges and the final part are the trend plots for nutrients, chlorophyll, and Secchi depth. **Plots were only made for systems with five or more years of data.**

For decades Florida has had a narrative nutrient water quality criterion in place to protect Florida’s waters against nutrient over-enrichment. In 2009, the Florida Department of Environmental Protection (FDEP) initiated rulemaking and, by 2011, adopted what would be the first set of statewide numeric nutrient standards for Florida’s waters. By 2015, almost all the remaining waters in Florida have numeric nutrient standards (see for FDEP Regulation Nutrient Criteria’s for: Streams, spring vents: <https://www.flrules.org/gateway/RuleNo.asp?title=SURFACE%20WATER%20QUALITY%20STANDARDS&ID=62-302.531>).



Figure 1. Map showing nutrient thresholds areas for streams set forth by FDEP.

Table 1. The nutrient thresholds for streams are listed in table below along with the map showing zones.

Nutrient Watershed Region	Total Phosphorus Nutrient Threshold <sup>1</sup>	Total Nitrogen Nutrient Threshold <sup>1</sup>
Panhandle West	60 µg/L	670 µg/L
Panhandle East	180 µg/L	1030 µg/L
North Central	300 µ/L	1870 µg/L
Peninsular	120 µg/L	1540 µg/L
West Central	490 µg/L	1650 µg/L
South Florida	No numeric nutrient threshold. The narrative criterion in paragraph 62-302.530(47)(b), F.A.C., applies.	No numeric nutrient threshold. The narrative criterion in paragraph 62-302.530(47)(b), F.A.C., applies.

<sup>1</sup>These values are annual geometric mean concentrations not to be exceeded more than once in any three calendar year periods.

## Base File Data for River/Streams: Definitions

- **County:** Name of county in which the system resides.
- **Name:** Stream name that LAKEWATCH uses for the system.
- **GNIS Number:** Number created by USGS's Geographic Names Information System.
- **Water Body Type:** Four different types of systems; lakes, estuaries, river/streams and springs.
- **Period of Record (years):** Number of years a system has been in the LAKEWATCH program.
- **Latitude and Longitude:** Coordinates identifying the exact location of station 1 for each system.

Table 2. Base File Data.

County	Sarasota
Name	Saddle Creek-2
GNIS Number	
Water Body Type	River/Stream
Period of Record (years, range)	1 (2007 to 2007)
Latitude	27.2615
Longitude	-82.3857

## Long-Term Data for River/Streams: Definitions

The following long-term data are the primary trophic state parameters collected by LAKEWATCH volunteers and classification variables color and specific conductance (LAKEWATCH recently began analyzing samples quarterly for color and specific conductance):

- **Total Phosphorus ( $\mu\text{g/L}$ ):** The nutrient most often limiting growth of plant/algae.
- **Total Nitrogen ( $\mu\text{g/L}$ ):** Another nutrient needed for aquatic plant/algae growth but only limiting when nitrogen to phosphorus ratios are generally less than 10.
- **Chlorophyll-uncorrected ( $\mu\text{g/L}$ ):** Chlorophyll concentrations are used to measure relative abundances of open water algal population.
- **Secchi (ft), Secchi (m):** Secchi measurements are estimates of water clarity.
- **Color (Pt-Co Units):** LAKEWATCH measures true color, which is the color of the water after particles have been filter out.
- **Specific Conductance ( $\mu\text{S/cm@25}^\circ\text{C}$ ):** Measurement of the ability of water to conduct electricity and can be used to estimate the amount of dissolved materials in water.

Table 3. Long-term trophic state data collected monthly by LAKEWATCH volunteers and color and specific conductance (collected quarterly).

Parameter	Minimum and Maximum Annual Geometric Means	Grand Geometric Mean (Sampling years)
Total Phosphorus ( $\mu\text{g/L}$ )	1353 - 1353	1353 (1)
Total Nitrogen ( $\mu\text{g/L}$ )	3670 - 3670	3670 (1)
Chlorophyll- uncorrected ( $\mu\text{g/L}$ )	21 - 21	21 (1)
Secchi (ft)	3 - 3	3 (1)
Secchi (m)	0.9 -0.9	0.9 (1)
Color (Pt-Co Units)	-	(0)
Specific Conductance ( $\mu\text{S/cm@25 C}$ )	-	(0)

**LAKEWATCH Report for Saddle Creek-3 in Sarasota County**  
**Watershed Region: West Central**  
**Using Data Downloaded 1/31/22**

**Introduction for River/Streams**

This report summarizes data collected on systems that have been part of the LAKEWATCH program. Data are from the period of record for individual systems. The first part of this summary lists background data for each system, the second part lists the long-term data geometric means and ranges and the final part are the trend plots for nutrients, chlorophyll, and Secchi depth. **Plots were only made for systems with five or more years of data.**

For decades Florida has had a narrative nutrient water quality criterion in place to protect Florida’s waters against nutrient over-enrichment. In 2009, the Florida Department of Environmental Protection (FDEP) initiated rulemaking and, by 2011, adopted what would be the first set of statewide numeric nutrient standards for Florida’s waters. By 2015, almost all the remaining waters in Florida have numeric nutrient standards (see for FDEP Regulation Nutrient Criteria’s for: Streams, spring vents: <https://www.flrules.org/gateway/RuleNo.asp?title=SURFACE%20WATER%20QUALITY%20STANDARDS&ID=62-302.531>).



Figure 1. Map showing nutrient thresholds areas for streams set forth by FDEP.

Table 1. The nutrient thresholds for streams are listed in table below along with the map showing zones.

Nutrient Watershed Region	Total Phosphorus Nutrient Threshold <sup>1</sup>	Total Nitrogen Nutrient Threshold <sup>1</sup>
Panhandle West	60 µg/L	670 µg/L
Panhandle East	180 µg/L	1030 µg/L
North Central	300 µg/L	1870 µg/L
Peninsular	120 µg/L	1540 µg/L
West Central	490 µg/L	1650 µg/L
South Florida	No numeric nutrient threshold. The narrative criterion in paragraph 62-302.530(47)(b), F.A.C., applies.	No numeric nutrient threshold. The narrative criterion in paragraph 62-302.530(47)(b), F.A.C., applies.

<sup>1</sup>These values are annual geometric mean concentrations not to be exceeded more than once in any three calendar year periods.

## Base File Data for River/Streams: Definitions

- **County:** Name of county in which the system resides.
- **Name:** Stream name that LAKEWATCH uses for the system.
- **GNIS Number:** Number created by USGS's Geographic Names Information System.
- **Water Body Type:** Four different types of systems; lakes, estuaries, river/streams and springs.
- **Period of Record (years):** Number of years a system has been in the LAKEWATCH program.
- **Latitude and Longitude:** Coordinates identifying the exact location of station 1 for each system.

Table 2. Base File Data.

County	Sarasota
Name	Saddle Creek-3
GNIS Number	
Water Body Type	River/Stream
Period of Record (years, range)	1 (2007 to 2007)
Latitude	27.2565
Longitude	-82.3844

## Long-Term Data for River/Streams: Definitions

The following long-term data are the primary trophic state parameters collected by LAKEWATCH volunteers and classification variables color and specific conductance (LAKEWATCH recently began analyzing samples quarterly for color and specific conductance):

- **Total Phosphorus ( $\mu\text{g/L}$ ):** The nutrient most often limiting growth of plant/algae.
- **Total Nitrogen ( $\mu\text{g/L}$ ):** Another nutrient needed for aquatic plant/algae growth but only limiting when nitrogen to phosphorus ratios are generally less than 10.
- **Chlorophyll-uncorrected ( $\mu\text{g/L}$ ):** Chlorophyll concentrations are used to measure relative abundances of open water algal population.
- **Secchi (ft), Secchi (m):** Secchi measurements are estimates of water clarity.
- **Color (Pt-Co Units):** LAKEWATCH measures true color, which is the color of the water after particles have been filter out.
- **Specific Conductance ( $\mu\text{S/cm@25}^\circ\text{C}$ ):** Measurement of the ability of water to conduct electricity and can be used to estimate the amount of dissolved materials in water.

Table 3. Long-term trophic state data collected monthly by LAKEWATCH volunteers and color and specific conductance (collected quarterly).

Parameter	Minimum and Maximum Annual Geometric Means	Grand Geometric Mean (Sampling years)
Total Phosphorus ( $\mu\text{g/L}$ )	1308 - 1308	1308 (1)
Total Nitrogen ( $\mu\text{g/L}$ )	4730 - 4730	4730 (1)
Chlorophyll- uncorrected ( $\mu\text{g/L}$ )	22 - 22	22 (1)
Secchi (ft)	-	(0)
Secchi (m)	-	(0)
Color (Pt-Co Units)	-	(0)
Specific Conductance ( $\mu\text{S/cm@25 C}$ )	-	(0)



**LAKEWATCH Report for Snover Waterway-1 in Sarasota County**  
**Watershed Region: West Central**  
**Using Data Downloaded 1/31/22**

**Introduction for River/Streams**

This report summarizes data collected on systems that have been part of the LAKEWATCH program. Data are from the period of record for individual systems. The first part of this summary lists background data for each system, the second part lists the long-term data geometric means and ranges and the final part are the trend plots for nutrients, chlorophyll, and Secchi depth. **Plots were only made for systems with five or more years of data.**

For decades Florida has had a narrative nutrient water quality criterion in place to protect Florida’s waters against nutrient over-enrichment. In 2009, the Florida Department of Environmental Protection (FDEP) initiated rulemaking and, by 2011, adopted what would be the first set of statewide numeric nutrient standards for Florida’s waters. By 2015, almost all the remaining waters in Florida have numeric nutrient standards (see for FDEP Regulation Nutrient Criteria’s for: Streams, spring vents: <https://www.flrules.org/gateway/RuleNo.asp?title=SURFACE%20WATER%20QUALITY%20STANDARDS&ID=62-302.531>).



Figure 1. Map showing nutrient thresholds areas for streams set forth by FDEP.

Table 1. The nutrient thresholds for streams are listed in table below along with the map showing zones.

Nutrient Watershed Region	Total Phosphorus Nutrient Threshold <sup>1</sup>	Total Nitrogen Nutrient Threshold <sup>1</sup>
Panhandle West	60 µg/L	670 µg/L
Panhandle East	180 µg/L	1030 µg/L
North Central	300 µg/L	1870 µg/L
Peninsular	120 µg/L	1540 µg/L
West Central	490 µg/L	1650 µg/L
South Florida	No numeric nutrient threshold. The narrative criterion in paragraph 62-302.530(47)(b), F.A.C., applies.	No numeric nutrient threshold. The narrative criterion in paragraph 62-302.530(47)(b), F.A.C., applies.

<sup>1</sup>These values are annual geometric mean concentrations not to be exceeded more than once in any three calendar year periods.

## Base File Data for River/Streams: Definitions

- **County:** Name of county in which the system resides.
- **Name:** Stream name that LAKEWATCH uses for the system.
- **GNIS Number:** Number created by USGS's Geographic Names Information System.
- **Water Body Type:** Four different types of systems; lakes, estuaries, river/streams and springs.
- **Period of Record (years):** Number of years a system has been in the LAKEWATCH program.
- **Latitude and Longitude:** Coordinates identifying the exact location of station 1 for each system.

Table 2. Base File Data.

County	Sarasota
Name	Snover Waterway-1
GNIS Number	
Water Body Type	River/Stream
Period of Record (years, range)	2 (2020 to 2021)
Latitude	27.0766
Longitude	-82.2058

## Long-Term Data for River/Streams: Definitions

The following long-term data are the primary trophic state parameters collected by LAKEWATCH volunteers and classification variables color and specific conductance (LAKEWATCH recently began analyzing samples quarterly for color and specific conductance):

- **Total Phosphorus ( $\mu\text{g/L}$ ):** The nutrient most often limiting growth of plant/algae.
- **Total Nitrogen ( $\mu\text{g/L}$ ):** Another nutrient needed for aquatic plant/algae growth but only limiting when nitrogen to phosphorus ratios are generally less than 10.
- **Chlorophyll-uncorrected ( $\mu\text{g/L}$ ):** Chlorophyll concentrations are used to measure relative abundances of open water algal population.
- **Secchi (ft), Secchi (m):** Secchi measurements are estimates of water clarity.
- **Color (Pt-Co Units):** LAKEWATCH measures true color, which is the color of the water after particles have been filter out.
- **Specific Conductance ( $\mu\text{S/cm@25}^\circ\text{C}$ ):** Measurement of the ability of water to conduct electricity and can be used to estimate the amount of dissolved materials in water.

Table 3. Long-term trophic state data collected monthly by LAKEWATCH volunteers and color and specific conductance (collected quarterly).

Parameter	Minimum and Maximum Annual Geometric Means	Grand Geometric Mean (Sampling years)
Total Phosphorus ( $\mu\text{g/L}$ )	97 - 230	149 (2)
Total Nitrogen ( $\mu\text{g/L}$ )	969 - 1486	1200 (2)
Chlorophyll- uncorrected ( $\mu\text{g/L}$ )	14 - 18	16 (2)
Secchi (ft)	1.9 - 2.4	2.1 (2)
Secchi (m)	0.6 - 0.7	0.7 (2)
Color (Pt-Co Units)	73 - 221	127 (2)
Specific Conductance ( $\mu\text{S/cm@25 C}$ )	474 - 691	572 (2)

**LAKEWATCH Report for Snover Waterway-2 in Sarasota County**  
**Watershed Region: West Central**  
**Using Data Downloaded 1/31/22**

**Introduction for River/Streams**

This report summarizes data collected on systems that have been part of the LAKEWATCH program. Data are from the period of record for individual systems. The first part of this summary lists background data for each system, the second part lists the long-term data geometric means and ranges and the final part are the trend plots for nutrients, chlorophyll, and Secchi depth. **Plots were only made for systems with five or more years of data.**

For decades Florida has had a narrative nutrient water quality criterion in place to protect Florida’s waters against nutrient over-enrichment. In 2009, the Florida Department of Environmental Protection (FDEP) initiated rulemaking and, by 2011, adopted what would be the first set of statewide numeric nutrient standards for Florida’s waters. By 2015, almost all the remaining waters in Florida have numeric nutrient standards (see for FDEP Regulation Nutrient Criteria’s for: Streams, spring vents: <https://www.flrules.org/gateway/RuleNo.asp?title=SURFACE%20WATER%20QUALITY%20STANDARDS&ID=62-302.531>).



Figure 1. Map showing nutrient thresholds areas for streams set forth by FDEP.

Table 1. The nutrient thresholds for streams are listed in table below along with the map showing zones.

Nutrient Watershed Region	Total Phosphorus Nutrient Threshold <sup>1</sup>	Total Nitrogen Nutrient Threshold <sup>1</sup>
Panhandle West	60 µg/L	670 µg/L
Panhandle East	180 µg/L	1030 µg/L
North Central	300 µg/L	1870 µg/L
Peninsular	120 µg/L	1540 µg/L
West Central	490 µg/L	1650 µg/L
South Florida	No numeric nutrient threshold. The narrative criterion in paragraph 62-302.530(47)(b), F.A.C., applies.	No numeric nutrient threshold. The narrative criterion in paragraph 62-302.530(47)(b), F.A.C., applies.

<sup>1</sup>These values are annual geometric mean concentrations not to be exceeded more than once in any three calendar year periods.

## Base File Data for River/Streams: Definitions

- **County:** Name of county in which the system resides.
- **Name:** Stream name that LAKEWATCH uses for the system.
- **GNIS Number:** Number created by USGS's Geographic Names Information System.
- **Water Body Type:** Four different types of systems; lakes, estuaries, river/streams and springs.
- **Period of Record (years):** Number of years a system has been in the LAKEWATCH program.
- **Latitude and Longitude:** Coordinates identifying the exact location of station 1 for each system.

Table 2. Base File Data.

County	Sarasota
Name	Snover Waterway-2
GNIS Number	
Water Body Type	River/Stream
Period of Record (years, range)	2 (2020 to 2021)
Latitude	27.0767
Longitude	-82.2124

## Long-Term Data for River/Streams: Definitions

The following long-term data are the primary trophic state parameters collected by LAKEWATCH volunteers and classification variables color and specific conductance (LAKEWATCH recently began analyzing samples quarterly for color and specific conductance):

- **Total Phosphorus ( $\mu\text{g/L}$ ):** The nutrient most often limiting growth of plant/algae.
- **Total Nitrogen ( $\mu\text{g/L}$ ):** Another nutrient needed for aquatic plant/algae growth but only limiting when nitrogen to phosphorus ratios are generally less than 10.
- **Chlorophyll-uncorrected ( $\mu\text{g/L}$ ):** Chlorophyll concentrations are used to measure relative abundances of open water algal population.
- **Secchi (ft), Secchi (m):** Secchi measurements are estimates of water clarity.
- **Color (Pt-Co Units):** LAKEWATCH measures true color, which is the color of the water after particles have been filter out.
- **Specific Conductance ( $\mu\text{S/cm@25}^\circ\text{C}$ ):** Measurement of the ability of water to conduct electricity and can be used to estimate the amount of dissolved materials in water.

Table 3. Long-term trophic state data collected monthly by LAKEWATCH volunteers and color and specific conductance (collected quarterly).

Parameter	Minimum and Maximum Annual Geometric Means	Grand Geometric Mean (Sampling years)
Total Phosphorus ( $\mu\text{g/L}$ )	96 - 235	150 (2)
Total Nitrogen ( $\mu\text{g/L}$ )	1019 - 1492	1233 (2)
Chlorophyll- uncorrected ( $\mu\text{g/L}$ )	16 - 16	16 (2)
Secchi (ft)	1.8 - 2.4	2.1 (2)
Secchi (m)	0.5 - 0.7	0.7 (2)
Color (Pt-Co Units)	205 - 238	221 (2)
Specific Conductance ( $\mu\text{S/cm@25 C}$ )	408 - 500	452 (2)

**LAKEWATCH Report for Snover Waterway-3 in Sarasota County**  
**Watershed Region: West Central**  
**Using Data Downloaded 1/31/22**

**Introduction for River/Streams**

This report summarizes data collected on systems that have been part of the LAKEWATCH program. Data are from the period of record for individual systems. The first part of this summary lists background data for each system, the second part lists the long-term data geometric means and ranges and the final part are the trend plots for nutrients, chlorophyll, and Secchi depth. **Plots were only made for systems with five or more years of data.**

For decades Florida has had a narrative nutrient water quality criterion in place to protect Florida’s waters against nutrient over-enrichment. In 2009, the Florida Department of Environmental Protection (FDEP) initiated rulemaking and, by 2011, adopted what would be the first set of statewide numeric nutrient standards for Florida’s waters. By 2015, almost all the remaining waters in Florida have numeric nutrient standards (see for FDEP Regulation Nutrient Criteria’s for: Streams, spring vents: <https://www.flrules.org/gateway/RuleNo.asp?title=SURFACE%20WATER%20QUALITY%20STANDARDS&ID=62-302.531>).



Figure 1. Map showing nutrient thresholds areas for streams set forth by FDEP.

Table 1. The nutrient thresholds for streams are listed in table below along with the map showing zones.

Nutrient Watershed Region	Total Phosphorus Nutrient Threshold <sup>1</sup>	Total Nitrogen Nutrient Threshold <sup>1</sup>
Panhandle West	60 µg/L	670 µg/L
Panhandle East	180 µg/L	1030 µg/L
North Central	300 µg/L	1870 µg/L
Peninsular	120 µg/L	1540 µg/L
West Central	490 µg/L	1650 µg/L
South Florida	No numeric nutrient threshold. The narrative criterion in paragraph 62-302.530(47)(b), F.A.C., applies.	No numeric nutrient threshold. The narrative criterion in paragraph 62-302.530(47)(b), F.A.C., applies.

<sup>1</sup>These values are annual geometric mean concentrations not to be exceeded more than once in any three calendar year periods.

## Base File Data for River/Streams: Definitions

- **County:** Name of county in which the system resides.
- **Name:** Stream name that LAKEWATCH uses for the system.
- **GNIS Number:** Number created by USGS's Geographic Names Information System.
- **Water Body Type:** Four different types of systems; lakes, estuaries, river/streams and springs.
- **Period of Record (years):** Number of years a system has been in the LAKEWATCH program.
- **Latitude and Longitude:** Coordinates identifying the exact location of station 1 for each system.

Table 2. Base File Data.

County	Sarasota
Name	Snover Waterway-3
GNIS Number	
Water Body Type	River/Stream
Period of Record (years, range)	2 (2020 to 2021)
Latitude	27.0768
Longitude	-82.218

## Long-Term Data for River/Streams: Definitions

The following long-term data are the primary trophic state parameters collected by LAKEWATCH volunteers and classification variables color and specific conductance (LAKEWATCH recently began analyzing samples quarterly for color and specific conductance):

- **Total Phosphorus ( $\mu\text{g/L}$ ):** The nutrient most often limiting growth of plant/algae.
- **Total Nitrogen ( $\mu\text{g/L}$ ):** Another nutrient needed for aquatic plant/algae growth but only limiting when nitrogen to phosphorus ratios are generally less than 10.
- **Chlorophyll-uncorrected ( $\mu\text{g/L}$ ):** Chlorophyll concentrations are used to measure relative abundances of open water algal population.
- **Secchi (ft), Secchi (m):** Secchi measurements are estimates of water clarity.
- **Color (Pt-Co Units):** LAKEWATCH measures true color, which is the color of the water after particles have been filter out.
- **Specific Conductance ( $\mu\text{S/cm@25}^\circ\text{C}$ ):** Measurement of the ability of water to conduct electricity and can be used to estimate the amount of dissolved materials in water.

Table 3. Long-term trophic state data collected monthly by LAKEWATCH volunteers and color and specific conductance (collected quarterly).

Parameter	Minimum and Maximum Annual Geometric Means	Grand Geometric Mean (Sampling years)
Total Phosphorus ( $\mu\text{g/L}$ )	95 - 242	151 (2)
Total Nitrogen ( $\mu\text{g/L}$ )	1047 - 1507	1256 (2)
Chlorophyll- uncorrected ( $\mu\text{g/L}$ )	15 - 20	18 (2)
Secchi (ft)	1.5 - 2.3	1.9 (2)
Secchi (m)	0.5 - 0.7	0.7 (2)
Color (Pt-Co Units)	217 - 267	241 (2)
Specific Conductance ( $\mu\text{S/cm@25 C}$ )	437 - 498	467 (2)

**LAKEWATCH Report for St. John's River-1 in Seminole County**  
**Watershed Region: Peninsular**  
**Using Data Downloaded 1/31/22**

**Introduction for River/Streams**

This report summarizes data collected on systems that have been part of the LAKEWATCH program. Data are from the period of record for individual systems. The first part of this summary lists background data for each system, the second part lists the long-term data geometric means and ranges and the final part are the trend plots for nutrients, chlorophyll, and Secchi depth. **Plots were only made for systems with five or more years of data.**

For decades Florida has had a narrative nutrient water quality criterion in place to protect Florida's waters against nutrient over-enrichment. In 2009, the Florida Department of Environmental Protection (FDEP) initiated rulemaking and, by 2011, adopted what would be the first set of statewide numeric nutrient standards for Florida's waters. By 2015, almost all the remaining waters in Florida have numeric nutrient standards (see for FDEP Regulation Nutrient Criteria's for: Streams, spring vents:

<https://www.flrules.org/gateway/RuleNo.asp?title=SURFACE%20WATER%20QUALITY%20STANDARDS&ID=62-302.531>).



Figure 1. Map showing nutrient thresholds areas for streams set forth by FDEP.

Table 1. The nutrient thresholds for streams are listed in table below along with the map showing zones.

Nutrient Watershed Region	Total Phosphorus Nutrient Threshold <sup>1</sup>	Total Nitrogen Nutrient Threshold <sup>1</sup>
Panhandle West	60 µg/L	670 µg/L
Panhandle East	180 µg/L	1030 µg/L
North Central	300 µg/L	1870 µg/L
Peninsular	120 µg/L	1540 µg/L
West Central	490 µg/L	1650 µg/L
South Florida	No numeric nutrient threshold. The narrative criterion in paragraph 62-302.530(47)(b), F.A.C., applies.	No numeric nutrient threshold. The narrative criterion in paragraph 62-302.530(47)(b), F.A.C., applies.

<sup>1</sup>These values are annual geometric mean concentrations not to be exceeded more than once in any three calendar year periods.

## Base File Data for River/Streams: Definitions

- **County:** Name of county in which the system resides.
- **Name:** Stream name that LAKEWATCH uses for the system.
- **GNIS Number:** Number created by USGS's Geographic Names Information System.
- **Water Body Type:** Four different types of systems; lakes, estuaries, river/streams and springs.
- **Period of Record (years):** Number of years a system has been in the LAKEWATCH program.
- **Latitude and Longitude:** Coordinates identifying the exact location of station 1 for each system.

Table 2. Base File Data.

County	Seminole
Name	St. John's River-1
GNIS Number	308105
Water Body Type	River/Stream
Period of Record (years, range)	3 (2001 to 2003)
Latitude	28.7112
Longitude	-81.0423

## Long-Term Data for River/Streams: Definitions

The following long-term data are the primary trophic state parameters collected by LAKEWATCH volunteers and classification variables color and specific conductance (LAKEWATCH recently began analyzing samples quarterly for color and specific conductance):

- **Total Phosphorus ( $\mu\text{g/L}$ ):** The nutrient most often limiting growth of plant/algae.
- **Total Nitrogen ( $\mu\text{g/L}$ ):** Another nutrient needed for aquatic plant/algae growth but only limiting when nitrogen to phosphorus ratios are generally less than 10.
- **Chlorophyll-uncorrected ( $\mu\text{g/L}$ ):** Chlorophyll concentrations are used to measure relative abundances of open water algal population.
- **Secchi (ft), Secchi (m):** Secchi measurements are estimates of water clarity.
- **Color (Pt-Co Units):** LAKEWATCH measures true color, which is the color of the water after particles have been filter out.
- **Specific Conductance ( $\mu\text{S/cm@25}^\circ\text{C}$ ):** Measurement of the ability of water to conduct electricity and can be used to estimate the amount of dissolved materials in water.

Table 3. Long-term trophic state data collected monthly by LAKEWATCH volunteers and color and specific conductance (collected quarterly).

Parameter	Minimum and Maximum Annual Geometric Means	Grand Geometric Mean (Sampling years)
Total Phosphorus ( $\mu\text{g/L}$ )	68 - 114	83 (3)
Total Nitrogen ( $\mu\text{g/L}$ )	1267 - 1542	1379 (3)
Chlorophyll- uncorrected ( $\mu\text{g/L}$ )	9 - 16	12 (3)
Secchi (ft)	1.3 - 2.2	1.6 (3)
Secchi (m)	0.4 - 0.7	0.7 (3)
Color (Pt-Co Units)	45 - 158	86 (3)
Specific Conductance ( $\mu\text{S/cm@25 C}$ )	-	(0)



**LAKEWATCH Report for St. John's River-2 in Seminole County**  
**Watershed Region: Peninsular**  
**Using Data Downloaded 1/31/22**

**Introduction for River/Streams**

This report summarizes data collected on systems that have been part of the LAKEWATCH program. Data are from the period of record for individual systems. The first part of this summary lists background data for each system, the second part lists the long-term data geometric means and ranges and the final part are the trend plots for nutrients, chlorophyll, and Secchi depth. **Plots were only made for systems with five or more years of data.**

For decades Florida has had a narrative nutrient water quality criterion in place to protect Florida's waters against nutrient over-enrichment. In 2009, the Florida Department of Environmental Protection (FDEP) initiated rulemaking and, by 2011, adopted what would be the first set of statewide numeric nutrient standards for Florida's waters. By 2015, almost all the remaining waters in Florida have numeric nutrient standards (see for FDEP Regulation Nutrient Criteria's for: Streams, spring vents:

<https://www.flrules.org/gateway/RuleNo.asp?title=SURFACE%20WATER%20QUALITY%20STANDARDS&ID=62-302.531>).



Figure 1. Map showing nutrient thresholds areas for streams set forth by FDEP.

Table 1. The nutrient thresholds for streams are listed in table below along with the map showing zones.

Nutrient Watershed Region	Total Phosphorus Nutrient Threshold <sup>1</sup>	Total Nitrogen Nutrient Threshold <sup>1</sup>
Panhandle West	60 µg/L	670 µg/L
Panhandle East	180 µg/L	1030 µg/L
North Central	300 µg/L	1870 µg/L
Peninsular	120 µg/L	1540 µg/L
West Central	490 µg/L	1650 µg/L
South Florida	No numeric nutrient threshold. The narrative criterion in paragraph 62-302.530(47)(b), F.A.C., applies.	No numeric nutrient threshold. The narrative criterion in paragraph 62-302.530(47)(b), F.A.C., applies.

<sup>1</sup>These values are annual geometric mean concentrations not to be exceeded more than once in any three calendar year periods.

## Base File Data for River/Streams: Definitions

- **County:** Name of county in which the system resides.
- **Name:** Stream name that LAKEWATCH uses for the system.
- **GNIS Number:** Number created by USGS's Geographic Names Information System.
- **Water Body Type:** Four different types of systems; lakes, estuaries, river/streams and springs.
- **Period of Record (years):** Number of years a system has been in the LAKEWATCH program.
- **Latitude and Longitude:** Coordinates identifying the exact location of station 1 for each system.

Table 2. Base File Data.

County	Seminole
Name	St. John's River-2
GNIS Number	308105
Water Body Type	River/Stream
Period of Record (years, range)	3 (2001 to 2003)
Latitude	28.7126
Longitude	-81.0344

## Long-Term Data for River/Streams: Definitions

The following long-term data are the primary trophic state parameters collected by LAKEWATCH volunteers and classification variables color and specific conductance (LAKEWATCH recently began analyzing samples quarterly for color and specific conductance):

- **Total Phosphorus ( $\mu\text{g/L}$ ):** The nutrient most often limiting growth of plant/algae.
- **Total Nitrogen ( $\mu\text{g/L}$ ):** Another nutrient needed for aquatic plant/algae growth but only limiting when nitrogen to phosphorus ratios are generally less than 10.
- **Chlorophyll-uncorrected ( $\mu\text{g/L}$ ):** Chlorophyll concentrations are used to measure relative abundances of open water algal population.
- **Secchi (ft), Secchi (m):** Secchi measurements are estimates of water clarity.
- **Color (Pt-Co Units):** LAKEWATCH measures true color, which is the color of the water after particles have been filter out.
- **Specific Conductance ( $\mu\text{S/cm@25}^\circ\text{C}$ ):** Measurement of the ability of water to conduct electricity and can be used to estimate the amount of dissolved materials in water.

Table 3. Long-term trophic state data collected monthly by LAKEWATCH volunteers and color and specific conductance (collected quarterly).

Parameter	Minimum and Maximum Annual Geometric Means	Grand Geometric Mean (Sampling years)
Total Phosphorus ( $\mu\text{g/L}$ )	62 - 111	81 (3)
Total Nitrogen ( $\mu\text{g/L}$ )	1287 - 1516	1381 (3)
Chlorophyll- uncorrected ( $\mu\text{g/L}$ )	7 - 16	11 (3)
Secchi (ft)	1.4 - 2.2	1.7 (3)
Secchi (m)	0.4 - 0.7	0.7 (3)
Color (Pt-Co Units)	47 - 161	87 (3)
Specific Conductance ( $\mu\text{S/cm@25 C}$ )	-	(0)

**LAKEWATCH Report for St. John's River-3 in Seminole County**  
**Watershed Region: Peninsular**  
**Using Data Downloaded 1/31/22**

**Introduction for River/Streams**

This report summarizes data collected on systems that have been part of the LAKEWATCH program. Data are from the period of record for individual systems. The first part of this summary lists background data for each system, the second part lists the long-term data geometric means and ranges and the final part are the trend plots for nutrients, chlorophyll, and Secchi depth. **Plots were only made for systems with five or more years of data.**

For decades Florida has had a narrative nutrient water quality criterion in place to protect Florida’s waters against nutrient over-enrichment. In 2009, the Florida Department of Environmental Protection (FDEP) initiated rulemaking and, by 2011, adopted what would be the first set of statewide numeric nutrient standards for Florida’s waters. By 2015, almost all the remaining waters in Florida have numeric nutrient standards (see for FDEP Regulation Nutrient Criteria’s for: Streams, spring vents: <https://www.flrules.org/gateway/RuleNo.asp?title=SURFACE%20WATER%20QUALITY%20STANDARDS&ID=62-302.531>).



Figure 1. Map showing nutrient thresholds areas for streams set forth by FDEP.

Table 1. The nutrient thresholds for streams are listed in table below along with the map showing zones.

Nutrient Watershed Region	Total Phosphorus Nutrient Threshold <sup>1</sup>	Total Nitrogen Nutrient Threshold <sup>1</sup>
Panhandle West	60 µg/L	670 µg/L
Panhandle East	180 µg/L	1030 µg/L
North Central	300 µg/L	1870 µg/L
Peninsular	120 µg/L	1540 µg/L
West Central	490 µg/L	1650 µg/L
South Florida	No numeric nutrient threshold. The narrative criterion in paragraph 62-302.530(47)(b), F.A.C., applies.	No numeric nutrient threshold. The narrative criterion in paragraph 62-302.530(47)(b), F.A.C., applies.

<sup>1</sup>These values are annual geometric mean concentrations not to be exceeded more than once in any three calendar year periods.

## Base File Data for River/Streams: Definitions

- **County:** Name of county in which the system resides.
- **Name:** Stream name that LAKEWATCH uses for the system.
- **GNIS Number:** Number created by USGS's Geographic Names Information System.
- **Water Body Type:** Four different types of systems; lakes, estuaries, river/streams and springs.
- **Period of Record (years):** Number of years a system has been in the LAKEWATCH program.
- **Latitude and Longitude:** Coordinates identifying the exact location of station 1 for each system.

Table 2. Base File Data.

County	Seminole
Name	St. John's River-3
GNIS Number	308105
Water Body Type	River/Stream
Period of Record (years, range)	3 (2001 to 2003)
Latitude	28.714
Longitude	-81.0341

## Long-Term Data for River/Streams: Definitions

The following long-term data are the primary trophic state parameters collected by LAKEWATCH volunteers and classification variables color and specific conductance (LAKEWATCH recently began analyzing samples quarterly for color and specific conductance):

- **Total Phosphorus ( $\mu\text{g/L}$ ):** The nutrient most often limiting growth of plant/algae.
- **Total Nitrogen ( $\mu\text{g/L}$ ):** Another nutrient needed for aquatic plant/algae growth but only limiting when nitrogen to phosphorus ratios are generally less than 10.
- **Chlorophyll-uncorrected ( $\mu\text{g/L}$ ):** Chlorophyll concentrations are used to measure relative abundances of open water algal population.
- **Secchi (ft), Secchi (m):** Secchi measurements are estimates of water clarity.
- **Color (Pt-Co Units):** LAKEWATCH measures true color, which is the color of the water after particles have been filter out.
- **Specific Conductance ( $\mu\text{S/cm@25}^\circ\text{C}$ ):** Measurement of the ability of water to conduct electricity and can be used to estimate the amount of dissolved materials in water.

Table 3. Long-term trophic state data collected monthly by LAKEWATCH volunteers and color and specific conductance (collected quarterly).

Parameter	Minimum and Maximum Annual Geometric Means	Grand Geometric Mean (Sampling years)
Total Phosphorus ( $\mu\text{g/L}$ )	67 - 110	83 (3)
Total Nitrogen ( $\mu\text{g/L}$ )	1301 - 1548	1420 (3)
Chlorophyll- uncorrected ( $\mu\text{g/L}$ )	7 - 19	12 (3)
Secchi (ft)	1.5 - 2.4	1.7 (3)
Secchi (m)	0.4 - 0.7	0.7 (3)
Color (Pt-Co Units)	47 - 157	90 (3)
Specific Conductance ( $\mu\text{S/cm@25 C}$ )	-	(0)

**LAKEWATCH Report for Wekiva River Lower-1 in Seminole County**  
**Watershed Region: Peninsular**  
**Using Data Downloaded 1/31/22**

**Introduction for River/Streams**

This report summarizes data collected on systems that have been part of the LAKEWATCH program. Data are from the period of record for individual systems. The first part of this summary lists background data for each system, the second part lists the long-term data geometric means and ranges and the final part are the trend plots for nutrients, chlorophyll, and Secchi depth. **Plots were only made for systems with five or more years of data.**

For decades Florida has had a narrative nutrient water quality criterion in place to protect Florida’s waters against nutrient over-enrichment. In 2009, the Florida Department of Environmental Protection (FDEP) initiated rulemaking and, by 2011, adopted what would be the first set of statewide numeric nutrient standards for Florida’s waters. By 2015, almost all the remaining waters in Florida have numeric nutrient standards (see for FDEP Regulation Nutrient Criteria’s for: Streams, spring vents: <https://www.flrules.org/gateway/RuleNo.asp?title=SURFACE%20WATER%20QUALITY%20STANDARDS&ID=62-302.531>).



Figure 1. Map showing nutrient thresholds areas for streams set forth by FDEP.

Table 1. The nutrient thresholds for streams are listed in table below along with the map showing zones.

Nutrient Watershed Region	Total Phosphorus Nutrient Threshold <sup>1</sup>	Total Nitrogen Nutrient Threshold <sup>1</sup>
Panhandle West	60 µg/L	670 µg/L
Panhandle East	180 µg/L	1030 µg/L
North Central	300 µ/L	1870 µg/L
Peninsular	120 µg/L	1540 µg/L
West Central	490 µg/L	1650 µg/L
South Florida	No numeric nutrient threshold. The narrative criterion in paragraph 62-302.530(47)(b), F.A.C., applies.	No numeric nutrient threshold. The narrative criterion in paragraph 62-302.530(47)(b), F.A.C., applies.

<sup>1</sup>These values are annual geometric mean concentrations not to be exceeded more than once in any three calendar year periods.

## Base File Data for River/Streams: Definitions

- **County:** Name of county in which the system resides.
- **Name:** Stream name that LAKEWATCH uses for the system.
- **GNIS Number:** Number created by USGS's Geographic Names Information System.
- **Water Body Type:** Four different types of systems; lakes, estuaries, river/streams and springs.
- **Period of Record (years):** Number of years a system has been in the LAKEWATCH program.
- **Latitude and Longitude:** Coordinates identifying the exact location of station 1 for each system.

Table 2. Base File Data.

County	Seminole
Name	Wekiva River Lower-1
GNIS Number	293000
Water Body Type	River/Stream
Period of Record (years, range)	2 (2001 to 2015)
Latitude	28.8316
Longitude	-81.4101

## Long-Term Data for River/Streams: Definitions

The following long-term data are the primary trophic state parameters collected by LAKEWATCH volunteers and classification variables color and specific conductance (LAKEWATCH recently began analyzing samples quarterly for color and specific conductance):

- **Total Phosphorus ( $\mu\text{g/L}$ ):** The nutrient most often limiting growth of plant/algae.
- **Total Nitrogen ( $\mu\text{g/L}$ ):** Another nutrient needed for aquatic plant/algae growth but only limiting when nitrogen to phosphorus ratios are generally less than 10.
- **Chlorophyll-uncorrected ( $\mu\text{g/L}$ ):** Chlorophyll concentrations are used to measure relative abundances of open water algal population.
- **Secchi (ft), Secchi (m):** Secchi measurements are estimates of water clarity.
- **Color (Pt-Co Units):** LAKEWATCH measures true color, which is the color of the water after particles have been filter out.
- **Specific Conductance ( $\mu\text{S/cm@25}^\circ\text{C}$ ):** Measurement of the ability of water to conduct electricity and can be used to estimate the amount of dissolved materials in water.

Table 3. Long-term trophic state data collected monthly by LAKEWATCH volunteers and color and specific conductance (collected quarterly).

Parameter	Minimum and Maximum Annual Geometric Means	Grand Geometric Mean (Sampling years)
Total Phosphorus ( $\mu\text{g/L}$ )	94 - 99	97 (2)
Total Nitrogen ( $\mu\text{g/L}$ )	640 - 972	789 (2)
Chlorophyll- uncorrected ( $\mu\text{g/L}$ )	4 - 5	4 (2)
Secchi (ft)	2.6 - 2.6	2.6 (1)
Secchi (m)	0.8 - 0.8	0.8 (1)
Color (Pt-Co Units)	16 - 136	47 (2)
Specific Conductance ( $\mu\text{S/cm@25 C}$ )	794 - 794	794 (1)

**LAKEWATCH Report for Wekiva River Lower-2 in Seminole County**  
**Watershed Region: Peninsular**  
**Using Data Downloaded 1/31/22**

**Introduction for River/Streams**

This report summarizes data collected on systems that have been part of the LAKEWATCH program. Data are from the period of record for individual systems. The first part of this summary lists background data for each system, the second part lists the long-term data geometric means and ranges and the final part are the trend plots for nutrients, chlorophyll, and Secchi depth. **Plots were only made for systems with five or more years of data.**

For decades Florida has had a narrative nutrient water quality criterion in place to protect Florida’s waters against nutrient over-enrichment. In 2009, the Florida Department of Environmental Protection (FDEP) initiated rulemaking and, by 2011, adopted what would be the first set of statewide numeric nutrient standards for Florida’s waters. By 2015, almost all the remaining waters in Florida have numeric nutrient standards (see for FDEP Regulation Nutrient Criteria’s for: Streams, spring vents: <https://www.flrules.org/gateway/RuleNo.asp?title=SURFACE%20WATER%20QUALITY%20STANDARDS&ID=62-302.531>).



Figure 1. Map showing nutrient thresholds areas for streams set forth by FDEP.

Table 1. The nutrient thresholds for streams are listed in table below along with the map showing zones.

Nutrient Watershed Region	Total Phosphorus Nutrient Threshold <sup>1</sup>	Total Nitrogen Nutrient Threshold <sup>1</sup>
Panhandle West	60 µg/L	670 µg/L
Panhandle East	180 µg/L	1030 µg/L
North Central	300 µ/L	1870 µg/L
Peninsular	120 µg/L	1540 µg/L
West Central	490 µg/L	1650 µg/L
South Florida	No numeric nutrient threshold. The narrative criterion in paragraph 62-302.530(47)(b), F.A.C., applies.	No numeric nutrient threshold. The narrative criterion in paragraph 62-302.530(47)(b), F.A.C., applies.

<sup>1</sup>These values are annual geometric mean concentrations not to be exceeded more than once in any three calendar year periods.

## Base File Data for River/Streams: Definitions

- **County:** Name of county in which the system resides.
- **Name:** Stream name that LAKEWATCH uses for the system.
- **GNIS Number:** Number created by USGS's Geographic Names Information System.
- **Water Body Type:** Four different types of systems; lakes, estuaries, river/streams and springs.
- **Period of Record (years):** Number of years a system has been in the LAKEWATCH program.
- **Latitude and Longitude:** Coordinates identifying the exact location of station 1 for each system.

Table 2. Base File Data.

County	Seminole
Name	Wekiva River Lower-2
GNIS Number	293000
Water Body Type	River/Stream
Period of Record (years, range)	2 (2001 to 2015)
Latitude	28.8316
Longitude	-81.41

## Long-Term Data for River/Streams: Definitions

The following long-term data are the primary trophic state parameters collected by LAKEWATCH volunteers and classification variables color and specific conductance (LAKEWATCH recently began analyzing samples quarterly for color and specific conductance):

- **Total Phosphorus ( $\mu\text{g/L}$ ):** The nutrient most often limiting growth of plant/algae.
- **Total Nitrogen ( $\mu\text{g/L}$ ):** Another nutrient needed for aquatic plant/algae growth but only limiting when nitrogen to phosphorus ratios are generally less than 10.
- **Chlorophyll-uncorrected ( $\mu\text{g/L}$ ):** Chlorophyll concentrations are used to measure relative abundances of open water algal population.
- **Secchi (ft), Secchi (m):** Secchi measurements are estimates of water clarity.
- **Color (Pt-Co Units):** LAKEWATCH measures true color, which is the color of the water after particles have been filter out.
- **Specific Conductance ( $\mu\text{S/cm@25}^\circ\text{C}$ ):** Measurement of the ability of water to conduct electricity and can be used to estimate the amount of dissolved materials in water.

Table 3. Long-term trophic state data collected monthly by LAKEWATCH volunteers and color and specific conductance (collected quarterly).

Parameter	Minimum and Maximum Annual Geometric Means	Grand Geometric Mean (Sampling years)
Total Phosphorus ( $\mu\text{g/L}$ )	96 - 103	99 (2)
Total Nitrogen ( $\mu\text{g/L}$ )	710 - 925	810 (2)
Chlorophyll- uncorrected ( $\mu\text{g/L}$ )	3 - 6	4 (2)
Secchi (ft)	2.6 - 2.6	2.6 (1)
Secchi (m)	0.8 - 0.8	0.8 (1)
Color (Pt-Co Units)	16 - 16	16 (1)
Specific Conductance ( $\mu\text{S/cm@25 C}$ )	769 - 769	769 (1)



**LAKEWATCH Report for Wekiva River Lower-3 in Seminole County**  
**Watershed Region: Peninsular**  
**Using Data Downloaded 1/31/22**

**Introduction for River/Streams**

This report summarizes data collected on systems that have been part of the LAKEWATCH program. Data are from the period of record for individual systems. The first part of this summary lists background data for each system, the second part lists the long-term data geometric means and ranges and the final part are the trend plots for nutrients, chlorophyll, and Secchi depth. **Plots were only made for systems with five or more years of data.**

For decades Florida has had a narrative nutrient water quality criterion in place to protect Florida’s waters against nutrient over-enrichment. In 2009, the Florida Department of Environmental Protection (FDEP) initiated rulemaking and, by 2011, adopted what would be the first set of statewide numeric nutrient standards for Florida’s waters. By 2015, almost all the remaining waters in Florida have numeric nutrient standards (see for FDEP Regulation Nutrient Criteria’s for: Streams, spring vents: <https://www.flrules.org/gateway/RuleNo.asp?title=SURFACE%20WATER%20QUALITY%20STANDARDS&ID=62-302.531>).



Figure 1. Map showing nutrient thresholds areas for streams set forth by FDEP.

Table 1. The nutrient thresholds for streams are listed in table below along with the map showing zones.

Nutrient Watershed Region	Total Phosphorus Nutrient Threshold <sup>1</sup>	Total Nitrogen Nutrient Threshold <sup>1</sup>
Panhandle West	60 µg/L	670 µg/L
Panhandle East	180 µg/L	1030 µg/L
North Central	300 µg/L	1870 µg/L
Peninsular	120 µg/L	1540 µg/L
West Central	490 µg/L	1650 µg/L
South Florida	No numeric nutrient threshold. The narrative criterion in paragraph 62-302.530(47)(b), F.A.C., applies.	No numeric nutrient threshold. The narrative criterion in paragraph 62-302.530(47)(b), F.A.C., applies.

<sup>1</sup>These values are annual geometric mean concentrations not to be exceeded more than once in any three calendar year periods.

## Base File Data for River/Streams: Definitions

- **County:** Name of county in which the system resides.
- **Name:** Stream name that LAKEWATCH uses for the system.
- **GNIS Number:** Number created by USGS's Geographic Names Information System.
- **Water Body Type:** Four different types of systems; lakes, estuaries, river/streams and springs.
- **Period of Record (years):** Number of years a system has been in the LAKEWATCH program.
- **Latitude and Longitude:** Coordinates identifying the exact location of station 1 for each system.

Table 2. Base File Data.

County	Seminole
Name	Wekiva River Lower-3
GNIS Number	293000
Water Body Type	River/Stream
Period of Record (years, range)	2 (2001 to 2015)
Latitude	28.8319
Longitude	-81.4097

## Long-Term Data for River/Streams: Definitions

The following long-term data are the primary trophic state parameters collected by LAKEWATCH volunteers and classification variables color and specific conductance (LAKEWATCH recently began analyzing samples quarterly for color and specific conductance):

- **Total Phosphorus ( $\mu\text{g/L}$ ):** The nutrient most often limiting growth of plant/algae.
- **Total Nitrogen ( $\mu\text{g/L}$ ):** Another nutrient needed for aquatic plant/algae growth but only limiting when nitrogen to phosphorus ratios are generally less than 10.
- **Chlorophyll-uncorrected ( $\mu\text{g/L}$ ):** Chlorophyll concentrations are used to measure relative abundances of open water algal population.
- **Secchi (ft), Secchi (m):** Secchi measurements are estimates of water clarity.
- **Color (Pt-Co Units):** LAKEWATCH measures true color, which is the color of the water after particles have been filter out.
- **Specific Conductance ( $\mu\text{S/cm@25}^\circ\text{C}$ ):** Measurement of the ability of water to conduct electricity and can be used to estimate the amount of dissolved materials in water.

Table 3. Long-term trophic state data collected monthly by LAKEWATCH volunteers and color and specific conductance (collected quarterly).

Parameter	Minimum and Maximum Annual Geometric Means	Grand Geometric Mean (Sampling years)
Total Phosphorus ( $\mu\text{g/L}$ )	101 - 101	101 (2)
Total Nitrogen ( $\mu\text{g/L}$ )	780 - 969	869 (2)
Chlorophyll- uncorrected ( $\mu\text{g/L}$ )	4 - 9	6 (2)
Secchi (ft)	2.6 - 3.5	3 (2)
Secchi (m)	0.8 - 1.1	1.1 (2)
Color (Pt-Co Units)	14 - 14	14 (1)
Specific Conductance ( $\mu\text{S/cm@25 C}$ )	792 - 792	792 (1)

**LAKEWATCH Report for Wekiva River-1 in Seminole County**  
**Watershed Region: Peninsular**  
**Using Data Downloaded 1/31/22**

**Introduction for River/Streams**

This report summarizes data collected on systems that have been part of the LAKEWATCH program. Data are from the period of record for individual systems. The first part of this summary lists background data for each system, the second part lists the long-term data geometric means and ranges and the final part are the trend plots for nutrients, chlorophyll, and Secchi depth. **Plots were only made for systems with five or more years of data.**

For decades Florida has had a narrative nutrient water quality criterion in place to protect Florida’s waters against nutrient over-enrichment. In 2009, the Florida Department of Environmental Protection (FDEP) initiated rulemaking and, by 2011, adopted what would be the first set of statewide numeric nutrient standards for Florida’s waters. By 2015, almost all the remaining waters in Florida have numeric nutrient standards (see for FDEP Regulation Nutrient Criteria’s for: Streams, spring vents: <https://www.flrules.org/gateway/RuleNo.asp?title=SURFACE%20WATER%20QUALITY%20STANDARDS&ID=62-302.531>).



Figure 1. Map showing nutrient thresholds areas for streams set forth by FDEP.

Table 1. The nutrient thresholds for streams are listed in table below along with the map showing zones.

Nutrient Watershed Region	Total Phosphorus Nutrient Threshold <sup>1</sup>	Total Nitrogen Nutrient Threshold <sup>1</sup>
Panhandle West	60 µg/L	670 µg/L
Panhandle East	180 µg/L	1030 µg/L
North Central	300 µg/L	1870 µg/L
Peninsular	120 µg/L	1540 µg/L
West Central	490 µg/L	1650 µg/L
South Florida	No numeric nutrient threshold. The narrative criterion in paragraph 62-302.530(47)(b), F.A.C., applies.	No numeric nutrient threshold. The narrative criterion in paragraph 62-302.530(47)(b), F.A.C., applies.

<sup>1</sup>These values are annual geometric mean concentrations not to be exceeded more than once in any three calendar year periods.

## Base File Data for River/Streams: Definitions

- **County:** Name of county in which the system resides.
- **Name:** Stream name that LAKEWATCH uses for the system.
- **GNIS Number:** Number created by USGS's Geographic Names Information System.
- **Water Body Type:** Four different types of systems; lakes, estuaries, river/streams and springs.
- **Period of Record (years):** Number of years a system has been in the LAKEWATCH program.
- **Latitude and Longitude:** Coordinates identifying the exact location of station 1 for each system.

Table 2. Base File Data.

County	Seminole
Name	Wekiva River-1
GNIS Number	293000
Water Body Type	River/Stream
Period of Record (years, range)	3 (2002 to 2005)
Latitude	28.7158
Longitude	-81.4404

## Long-Term Data for River/Streams: Definitions

The following long-term data are the primary trophic state parameters collected by LAKEWATCH volunteers and classification variables color and specific conductance (LAKEWATCH recently began analyzing samples quarterly for color and specific conductance):

- **Total Phosphorus ( $\mu\text{g/L}$ ):** The nutrient most often limiting growth of plant/algae.
- **Total Nitrogen ( $\mu\text{g/L}$ ):** Another nutrient needed for aquatic plant/algae growth but only limiting when nitrogen to phosphorus ratios are generally less than 10.
- **Chlorophyll-uncorrected ( $\mu\text{g/L}$ ):** Chlorophyll concentrations are used to measure relative abundances of open water algal population.
- **Secchi (ft), Secchi (m):** Secchi measurements are estimates of water clarity.
- **Color (Pt-Co Units):** LAKEWATCH measures true color, which is the color of the water after particles have been filter out.
- **Specific Conductance ( $\mu\text{S/cm@25}^\circ\text{C}$ ):** Measurement of the ability of water to conduct electricity and can be used to estimate the amount of dissolved materials in water.

Table 3. Long-term trophic state data collected monthly by LAKEWATCH volunteers and color and specific conductance (collected quarterly).

Parameter	Minimum and Maximum Annual Geometric Means	Grand Geometric Mean (Sampling years)
Total Phosphorus ( $\mu\text{g/L}$ )	93 - 110	101 (3)
Total Nitrogen ( $\mu\text{g/L}$ )	1063 - 1293	1196 (3)
Chlorophyll- uncorrected ( $\mu\text{g/L}$ )	1 - 1	1 (3)
Secchi (ft)	2.1 - 4	2.9 (2)
Secchi (m)	0.6 -1.2	1.2 (2)
Color (Pt-Co Units)	25 - 52	35 (3)
Specific Conductance ( $\mu\text{S/cm@25 C}$ )	-	(0)

**LAKEWATCH Report for Wekiva River-2 in Seminole County**  
**Watershed Region: Peninsular**  
**Using Data Downloaded 1/31/22**

**Introduction for River/Streams**

This report summarizes data collected on systems that have been part of the LAKEWATCH program. Data are from the period of record for individual systems. The first part of this summary lists background data for each system, the second part lists the long-term data geometric means and ranges and the final part are the trend plots for nutrients, chlorophyll, and Secchi depth. **Plots were only made for systems with five or more years of data.**

For decades Florida has had a narrative nutrient water quality criterion in place to protect Florida’s waters against nutrient over-enrichment. In 2009, the Florida Department of Environmental Protection (FDEP) initiated rulemaking and, by 2011, adopted what would be the first set of statewide numeric nutrient standards for Florida’s waters. By 2015, almost all the remaining waters in Florida have numeric nutrient standards (see for FDEP Regulation Nutrient Criteria’s for: Streams, spring vents: <https://www.flrules.org/gateway/RuleNo.asp?title=SURFACE%20WATER%20QUALITY%20STANDARDS&ID=62-302.531>).



Figure 1. Map showing nutrient thresholds areas for streams set forth by FDEP.

Table 1. The nutrient thresholds for streams are listed in table below along with the map showing zones.

Nutrient Watershed Region	Total Phosphorus Nutrient Threshold <sup>1</sup>	Total Nitrogen Nutrient Threshold <sup>1</sup>
Panhandle West	60 µg/L	670 µg/L
Panhandle East	180 µg/L	1030 µg/L
North Central	300 µg/L	1870 µg/L
Peninsular	120 µg/L	1540 µg/L
West Central	490 µg/L	1650 µg/L
South Florida	No numeric nutrient threshold. The narrative criterion in paragraph 62-302.530(47)(b), F.A.C., applies.	No numeric nutrient threshold. The narrative criterion in paragraph 62-302.530(47)(b), F.A.C., applies.

<sup>1</sup>These values are annual geometric mean concentrations not to be exceeded more than once in any three calendar year periods.

## Base File Data for River/Streams: Definitions

- **County:** Name of county in which the system resides.
- **Name:** Stream name that LAKEWATCH uses for the system.
- **GNIS Number:** Number created by USGS's Geographic Names Information System.
- **Water Body Type:** Four different types of systems; lakes, estuaries, river/streams and springs.
- **Period of Record (years):** Number of years a system has been in the LAKEWATCH program.
- **Latitude and Longitude:** Coordinates identifying the exact location of station 1 for each system.

Table 2. Base File Data.

County	Seminole
Name	Wekiva River-2
GNIS Number	293000
Water Body Type	River/Stream
Period of Record (years, range)	3 (2002 to 2005)
Latitude	28.7223
Longitude	-81.4347

## Long-Term Data for River/Streams: Definitions

The following long-term data are the primary trophic state parameters collected by LAKEWATCH volunteers and classification variables color and specific conductance (LAKEWATCH recently began analyzing samples quarterly for color and specific conductance):

- **Total Phosphorus ( $\mu\text{g/L}$ ):** The nutrient most often limiting growth of plant/algae.
- **Total Nitrogen ( $\mu\text{g/L}$ ):** Another nutrient needed for aquatic plant/algae growth but only limiting when nitrogen to phosphorus ratios are generally less than 10.
- **Chlorophyll-uncorrected ( $\mu\text{g/L}$ ):** Chlorophyll concentrations are used to measure relative abundances of open water algal population.
- **Secchi (ft), Secchi (m):** Secchi measurements are estimates of water clarity.
- **Color (Pt-Co Units):** LAKEWATCH measures true color, which is the color of the water after particles have been filter out.
- **Specific Conductance ( $\mu\text{S/cm@25}^\circ\text{C}$ ):** Measurement of the ability of water to conduct electricity and can be used to estimate the amount of dissolved materials in water.

Table 3. Long-term trophic state data collected monthly by LAKEWATCH volunteers and color and specific conductance (collected quarterly).

Parameter	Minimum and Maximum Annual Geometric Means	Grand Geometric Mean (Sampling years)
Total Phosphorus ( $\mu\text{g/L}$ )	90 - 112	100 (3)
Total Nitrogen ( $\mu\text{g/L}$ )	1055 - 1295	1196 (3)
Chlorophyll- uncorrected ( $\mu\text{g/L}$ )	1 - 1	1 (3)
Secchi (ft)	1.9 - 1.9	1.9 (1)
Secchi (m)	0.6 - 0.6	0.6 (1)
Color (Pt-Co Units)	27 - 50	34 (3)
Specific Conductance ( $\mu\text{S/cm@25 C}$ )	-	(0)

**LAKEWATCH Report for Wekiva River-3 in Seminole County**  
**Watershed Region: Peninsular**  
**Using Data Downloaded 1/31/22**

**Introduction for River/Streams**

This report summarizes data collected on systems that have been part of the LAKEWATCH program. Data are from the period of record for individual systems. The first part of this summary lists background data for each system, the second part lists the long-term data geometric means and ranges and the final part are the trend plots for nutrients, chlorophyll, and Secchi depth. **Plots were only made for systems with five or more years of data.**

For decades Florida has had a narrative nutrient water quality criterion in place to protect Florida’s waters against nutrient over-enrichment. In 2009, the Florida Department of Environmental Protection (FDEP) initiated rulemaking and, by 2011, adopted what would be the first set of statewide numeric nutrient standards for Florida’s waters. By 2015, almost all the remaining waters in Florida have numeric nutrient standards (see for FDEP Regulation Nutrient Criteria’s for: Streams, spring vents:

<https://www.flrules.org/gateway/RuleNo.asp?title=SURFACE%20WATER%20QUALITY%20STANDARDS&ID=62-302.531>).



Figure 1. Map showing nutrient thresholds areas for streams set forth by FDEP.

Table 1. The nutrient thresholds for streams are listed in table below along with the map showing zones.

Nutrient Watershed Region	Total Phosphorus Nutrient Threshold <sup>1</sup>	Total Nitrogen Nutrient Threshold <sup>1</sup>
Panhandle West	60 µg/L	670 µg/L
Panhandle East	180 µg/L	1030 µg/L
North Central	300 µ/L	1870 µg/L
Peninsular	120 µg/L	1540 µg/L
West Central	490 µg/L	1650 µg/L
South Florida	No numeric nutrient threshold. The narrative criterion in paragraph 62-302.530(47)(b), F.A.C., applies.	No numeric nutrient threshold. The narrative criterion in paragraph 62-302.530(47)(b), F.A.C., applies.

<sup>1</sup>These values are annual geometric mean concentrations not to be exceeded more than once in any three calendar year periods.

## Base File Data for River/Streams: Definitions

- **County:** Name of county in which the system resides.
- **Name:** Stream name that LAKEWATCH uses for the system.
- **GNIS Number:** Number created by USGS's Geographic Names Information System.
- **Water Body Type:** Four different types of systems; lakes, estuaries, river/streams and springs.
- **Period of Record (years):** Number of years a system has been in the LAKEWATCH program.
- **Latitude and Longitude:** Coordinates identifying the exact location of station 1 for each system.

Table 2. Base File Data.

County	Seminole
Name	Wekiva River-3
GNIS Number	293000
Water Body Type	River/Stream
Period of Record (years, range)	3 (2002 to 2005)
Latitude	28.7268
Longitude	-81.4312

## Long-Term Data for River/Streams: Definitions

The following long-term data are the primary trophic state parameters collected by LAKEWATCH volunteers and classification variables color and specific conductance (LAKEWATCH recently began analyzing samples quarterly for color and specific conductance):

- **Total Phosphorus ( $\mu\text{g/L}$ ):** The nutrient most often limiting growth of plant/algae.
- **Total Nitrogen ( $\mu\text{g/L}$ ):** Another nutrient needed for aquatic plant/algae growth but only limiting when nitrogen to phosphorus ratios are generally less than 10.
- **Chlorophyll-uncorrected ( $\mu\text{g/L}$ ):** Chlorophyll concentrations are used to measure relative abundances of open water algal population.
- **Secchi (ft), Secchi (m):** Secchi measurements are estimates of water clarity.
- **Color (Pt-Co Units):** LAKEWATCH measures true color, which is the color of the water after particles have been filter out.
- **Specific Conductance ( $\mu\text{S/cm@25}^\circ\text{C}$ ):** Measurement of the ability of water to conduct electricity and can be used to estimate the amount of dissolved materials in water.

Table 3. Long-term trophic state data collected monthly by LAKEWATCH volunteers and color and specific conductance (collected quarterly).

Parameter	Minimum and Maximum Annual Geometric Means	Grand Geometric Mean (Sampling years)
Total Phosphorus ( $\mu\text{g/L}$ )	94 - 112	101 (3)
Total Nitrogen ( $\mu\text{g/L}$ )	1076 - 1342	1241 (3)
Chlorophyll- uncorrected ( $\mu\text{g/L}$ )	1 - 2	1 (3)
Secchi (ft)	1.7 - 1.7	1.7 (1)
Secchi (m)	0.5 - 0.5	0.5 (1)
Color (Pt-Co Units)	26 - 55	38 (3)
Specific Conductance ( $\mu\text{S/cm@25 C}$ )	-	(0)



**LAKEWATCH Report for Mill Creek-1 in St John's County**  
**Watershed Region: Peninsular**  
**Using Data Downloaded 1/31/22**

**Introduction for River/Streams**

This report summarizes data collected on systems that have been part of the LAKEWATCH program. Data are from the period of record for individual systems. The first part of this summary lists background data for each system, the second part lists the long-term data geometric means and ranges and the final part are the trend plots for nutrients, chlorophyll, and Secchi depth. **Plots were only made for systems with five or more years of data.**

For decades Florida has had a narrative nutrient water quality criterion in place to protect Florida's waters against nutrient over-enrichment. In 2009, the Florida Department of Environmental Protection (FDEP) initiated rulemaking and, by 2011, adopted what would be the first set of statewide numeric nutrient standards for Florida's waters. By 2015, almost all the remaining waters in Florida have numeric nutrient standards (see for FDEP Regulation Nutrient Criteria's for: Streams, spring vents: <https://www.flrules.org/gateway/RuleNo.asp?title=SURFACE%20WATER%20QUALITY%20STANDARDS&ID=62-302.531>).



Figure 1. Map showing nutrient thresholds areas for streams set forth by FDEP.

Table 1. The nutrient thresholds for streams are listed in table below along with the map showing zones.

Nutrient Watershed Region	Total Phosphorus Nutrient Threshold <sup>1</sup>	Total Nitrogen Nutrient Threshold <sup>1</sup>
Panhandle West	60 µg/L	670 µg/L
Panhandle East	180 µg/L	1030 µg/L
North Central	300 µ/L	1870 µg/L
Peninsular	120 µg/L	1540 µg/L
West Central	490 µg/L	1650 µg/L
South Florida	No numeric nutrient threshold. The narrative criterion in paragraph 62-302.530(47)(b), F.A.C., applies.	No numeric nutrient threshold. The narrative criterion in paragraph 62-302.530(47)(b), F.A.C., applies.

<sup>1</sup>These values are annual geometric mean concentrations not to be exceeded more than once in any three calendar year periods.

## Base File Data for River/Streams: Definitions

- **County:** Name of county in which the system resides.
- **Name:** Stream name that LAKEWATCH uses for the system.
- **GNIS Number:** Number created by USGS's Geographic Names Information System.
- **Water Body Type:** Four different types of systems; lakes, estuaries, river/streams and springs.
- **Period of Record (years):** Number of years a system has been in the LAKEWATCH program.
- **Latitude and Longitude:** Coordinates identifying the exact location of station 1 for each system.

Table 2. Base File Data.

County	St John's
Name	Mill Creek-1
GNIS Number	308032
Water Body Type	River/Stream
Period of Record (years, range)	13 (2005 to 2017)
Latitude	30.0923
Longitude	-81.6317

## Long-Term Data for River/Streams: Definitions

The following long-term data are the primary trophic state parameters collected by LAKEWATCH volunteers and classification variables color and specific conductance (LAKEWATCH recently began analyzing samples quarterly for color and specific conductance):

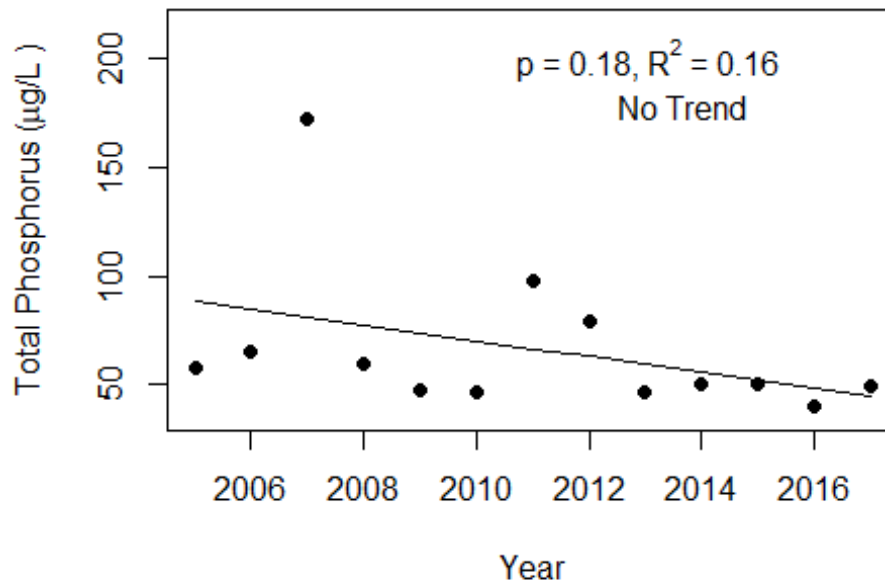
- **Total Phosphorus ( $\mu\text{g/L}$ ):** The nutrient most often limiting growth of plant/algae.
- **Total Nitrogen ( $\mu\text{g/L}$ ):** Another nutrient needed for aquatic plant/algae growth but only limiting when nitrogen to phosphorus ratios are generally less than 10.
- **Chlorophyll-uncorrected ( $\mu\text{g/L}$ ):** Chlorophyll concentrations are used to measure relative abundances of open water algal population.
- **Secchi (ft), Secchi (m):** Secchi measurements are estimates of water clarity.
- **Color (Pt-Co Units):** LAKEWATCH measures true color, which is the color of the water after particles have been filter out.
- **Specific Conductance ( $\mu\text{S/cm@25}^\circ\text{C}$ ):** Measurement of the ability of water to conduct electricity and can be used to estimate the amount of dissolved materials in water.

Table 3. Long-term trophic state data collected monthly by LAKEWATCH volunteers and color and specific conductance (collected quarterly).

Parameter	Minimum and Maximum Annual Geometric Means	Grand Geometric Mean (Sampling years)
Total Phosphorus ( $\mu\text{g/L}$ )	41 - 172	61 (13)
Total Nitrogen ( $\mu\text{g/L}$ )	781 - 1830	1116 (13)
Chlorophyll- uncorrected ( $\mu\text{g/L}$ )	3 - 20	8 (13)
Secchi (ft)	1 - 3	1.5 (10)
Secchi (m)	0.3 -0.9	0.9 (10)
Color (Pt-Co Units)	36 - 522	118 (11)
Specific Conductance ( $\mu\text{S/cm@25 C}$ )	121 - 3156	351 (10)

Figure 2 and Figure 3. Trend plots of annual average total phosphorus and annual average total nitrogen versus year. The  $R^2$  value indicates the strength of the relations (ranges from 0.0 to 1.0; higher the  $R^2$  the stronger the relation) and the p value indicates if the relation is significant ( $p < 0.05$  is significant). Trend status are reported on the plots.

### Mill Creek-1 (St John's)



### Mill Creek-1 (St John's)

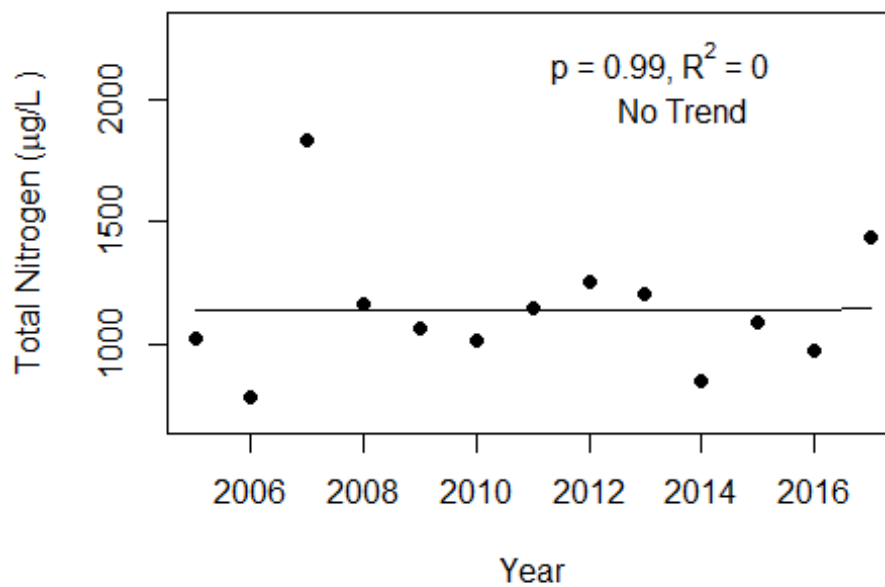
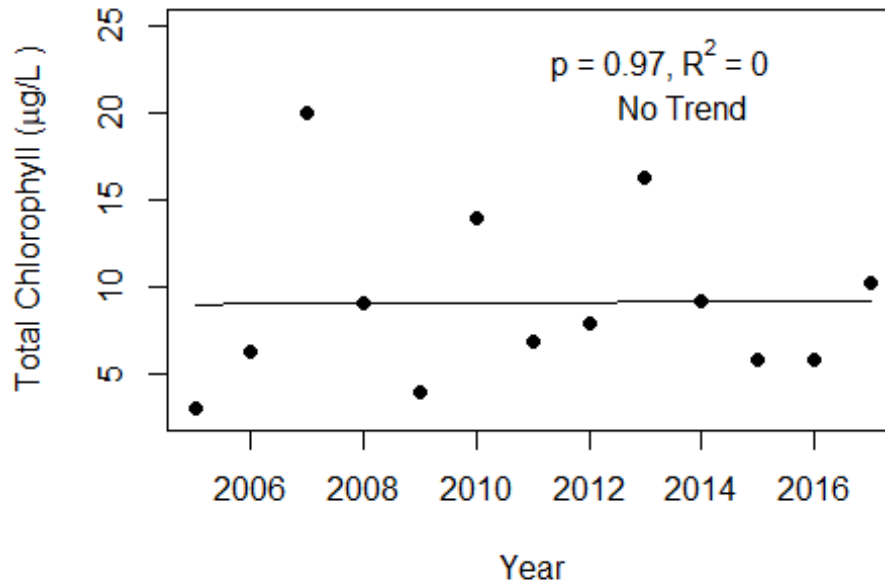
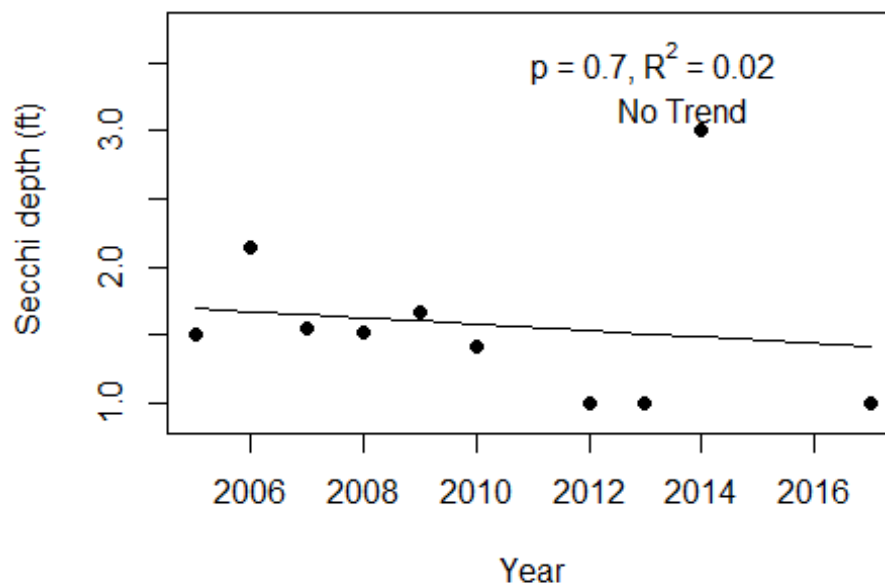


Figure 4 and Figure 5. Trend plots of annual average chlorophyll and annual average Secchi versus year. The  $R^2$  value indicates the strength of the relations (ranges from 0.0 to 1.0; higher the  $R^2$  the stronger the relations and the p value indicates if the relation is significant ( $p < 0.05$  is significant). Trend status are reported on plots.

### Mill Creek-1 (St John's)



### Mill Creek-1 (St John's)



**LAKEWATCH Report for Mill Creek-2 in St John's County**  
**Watershed Region: Peninsular**  
**Using Data Downloaded 1/31/22**

**Introduction for River/Streams**

This report summarizes data collected on systems that have been part of the LAKEWATCH program. Data are from the period of record for individual systems. The first part of this summary lists background data for each system, the second part lists the long-term data geometric means and ranges and the final part are the trend plots for nutrients, chlorophyll, and Secchi depth. **Plots were only made for systems with five or more years of data.**

For decades Florida has had a narrative nutrient water quality criterion in place to protect Florida’s waters against nutrient over-enrichment. In 2009, the Florida Department of Environmental Protection (FDEP) initiated rulemaking and, by 2011, adopted what would be the first set of statewide numeric nutrient standards for Florida’s waters. By 2015, almost all the remaining waters in Florida have numeric nutrient standards (see for FDEP Regulation Nutrient Criteria’s for: Streams, spring vents:

<https://www.flrules.org/gateway/RuleNo.asp?title=SURFACE%20WATER%20QUALITY%20STANDARDS&ID=62-302.531>).



Figure 1. Map showing nutrient thresholds areas for streams set forth by FDEP.

Table 1. The nutrient thresholds for streams are listed in table below along with the map showing zones.

Nutrient Watershed Region	Total Phosphorus Nutrient Threshold <sup>1</sup>	Total Nitrogen Nutrient Threshold <sup>1</sup>
Panhandle West	60 µg/L	670 µg/L
Panhandle East	180 µg/L	1030 µg/L
North Central	300 µ/L	1870 µg/L
Peninsular	120 µg/L	1540 µg/L
West Central	490 µg/L	1650 µg/L
South Florida	No numeric nutrient threshold. The narrative criterion in paragraph 62-302.530(47)(b), F.A.C., applies.	No numeric nutrient threshold. The narrative criterion in paragraph 62-302.530(47)(b), F.A.C., applies.

<sup>1</sup>These values are annual geometric mean concentrations not to be exceeded more than once in any three calendar year periods.

## Base File Data for River/Streams: Definitions

- **County:** Name of county in which the system resides.
- **Name:** Stream name that LAKEWATCH uses for the system.
- **GNIS Number:** Number created by USGS's Geographic Names Information System.
- **Water Body Type:** Four different types of systems; lakes, estuaries, river/streams and springs.
- **Period of Record (years):** Number of years a system has been in the LAKEWATCH program.
- **Latitude and Longitude:** Coordinates identifying the exact location of station 1 for each system.

Table 2. Base File Data.

County	St John's
Name	Mill Creek-2
GNIS Number	308032
Water Body Type	River/Stream
Period of Record (years, range)	13 (2005 to 2017)
Latitude	30.0944
Longitude	-81.6347

## Long-Term Data for River/Streams: Definitions

The following long-term data are the primary trophic state parameters collected by LAKEWATCH volunteers and classification variables color and specific conductance (LAKEWATCH recently began analyzing samples quarterly for color and specific conductance):

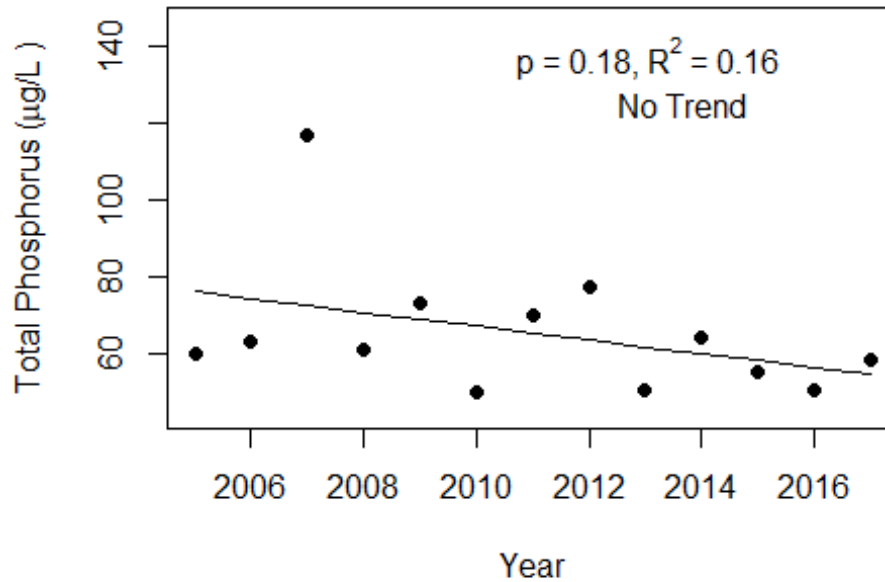
- **Total Phosphorus ( $\mu\text{g/L}$ ):** The nutrient most often limiting growth of plant/algae.
- **Total Nitrogen ( $\mu\text{g/L}$ ):** Another nutrient needed for aquatic plant/algae growth but only limiting when nitrogen to phosphorus ratios are generally less than 10.
- **Chlorophyll-uncorrected ( $\mu\text{g/L}$ ):** Chlorophyll concentrations are used to measure relative abundances of open water algal population.
- **Secchi (ft), Secchi (m):** Secchi measurements are estimates of water clarity.
- **Color (Pt-Co Units):** LAKEWATCH measures true color, which is the color of the water after particles have been filter out.
- **Specific Conductance ( $\mu\text{S/cm@25}^\circ\text{C}$ ):** Measurement of the ability of water to conduct electricity and can be used to estimate the amount of dissolved materials in water.

Table 3. Long-term trophic state data collected monthly by LAKEWATCH volunteers and color and specific conductance (collected quarterly).

Parameter	Minimum and Maximum Annual Geometric Means	Grand Geometric Mean (Sampling years)
Total Phosphorus ( $\mu\text{g/L}$ )	50 - 117	64 (13)
Total Nitrogen ( $\mu\text{g/L}$ )	760 - 1461	1050 (13)
Chlorophyll- uncorrected ( $\mu\text{g/L}$ )	2 - 26	11 (13)
Secchi (ft)	1.3 - 3.9	2.5 (13)
Secchi (m)	0.4 -1.2	1.2 (13)
Color (Pt-Co Units)	41 - 506	122 (11)
Specific Conductance ( $\mu\text{S/cm@25 C}$ )	129 - 6481	570 (10)

Figure 2 and Figure 3. Trend plots of annual average total phosphorus and annual average total nitrogen versus year. The  $R^2$  value indicates the strength of the relations (ranges from 0.0 to 1.0; higher the  $R^2$  the stronger the relation) and the p value indicates if the relation is significant ( $p < 0.05$  is significant). Trend status are reported on the plots.

### Mill Creek-2 (St John's)



### Mill Creek-2 (St John's)

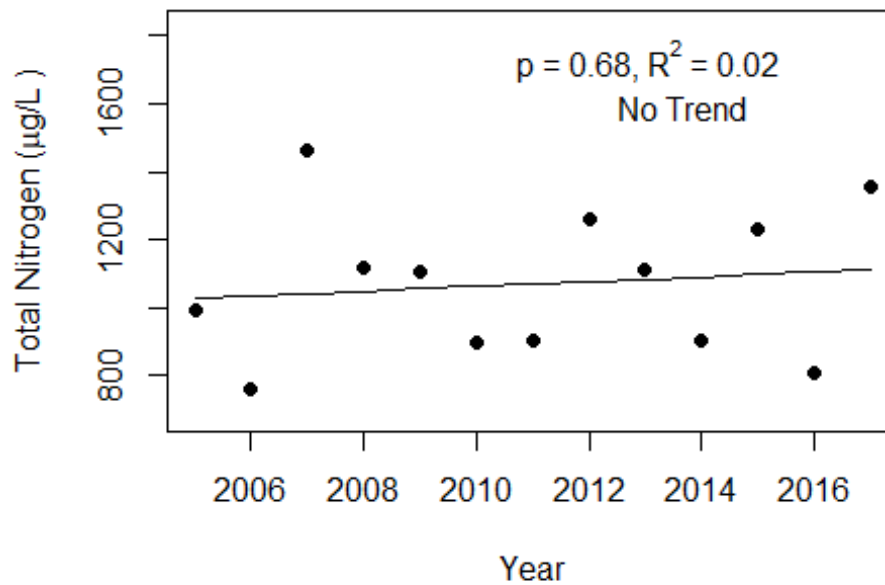
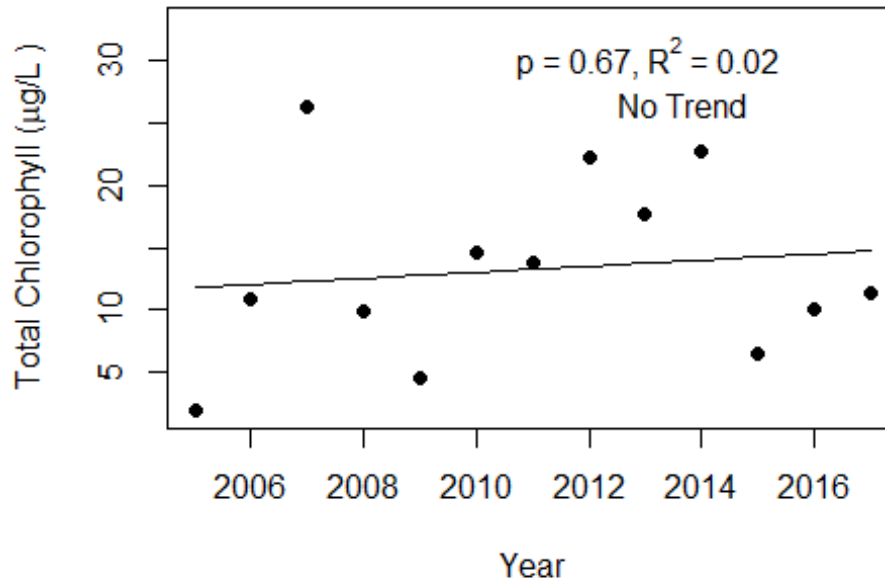
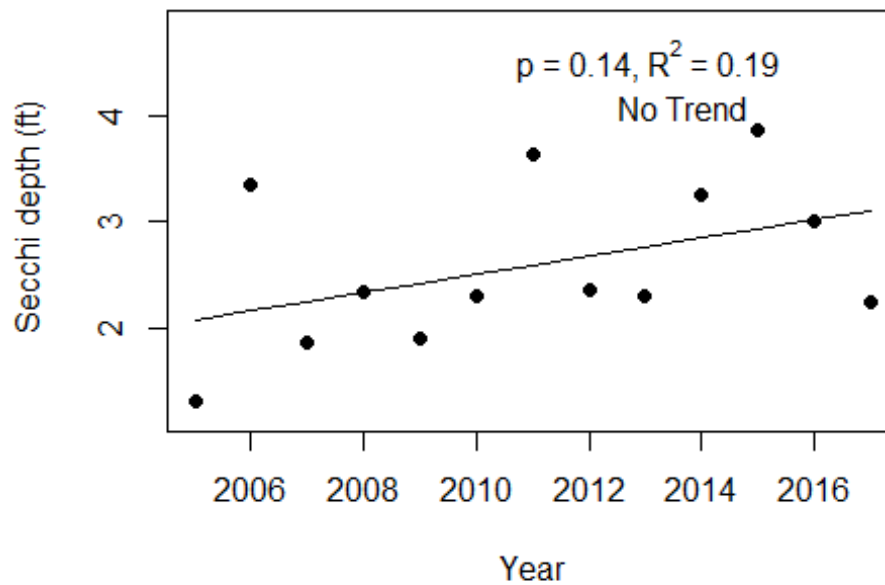


Figure 4 and Figure 5. Trend plots of annual average chlorophyll and annual average Secchi versus year. The  $R^2$  value indicates the strength of the relations (ranges from 0.0 to 1.0; higher the  $R^2$  the stronger the relations and the p value indicates if the relation is significant ( $p < 0.05$  is significant)). Trend status are reported on plots.

### Mill Creek-2 (St John's)



### Mill Creek-2 (St John's)





**LAKEWATCH Report for Mill Creek-3 in St John's County**  
**Watershed Region: Peninsular**  
**Using Data Downloaded 1/31/22**

**Introduction for River/Streams**

This report summarizes data collected on systems that have been part of the LAKEWATCH program. Data are from the period of record for individual systems. The first part of this summary lists background data for each system, the second part lists the long-term data geometric means and ranges and the final part are the trend plots for nutrients, chlorophyll, and Secchi depth. **Plots were only made for systems with five or more years of data.**

For decades Florida has had a narrative nutrient water quality criterion in place to protect Florida’s waters against nutrient over-enrichment. In 2009, the Florida Department of Environmental Protection (FDEP) initiated rulemaking and, by 2011, adopted what would be the first set of statewide numeric nutrient standards for Florida’s waters. By 2015, almost all the remaining waters in Florida have numeric nutrient standards (see for FDEP Regulation Nutrient Criteria’s for: Streams, spring vents: <https://www.flrules.org/gateway/RuleNo.asp?title=SURFACE%20WATER%20QUALITY%20STANDARDS&ID=62-302.531>).



Figure 1. Map showing nutrient thresholds areas for streams set forth by FDEP.

Table 1. The nutrient thresholds for streams are listed in table below along with the map showing zones.

Nutrient Watershed Region	Total Phosphorus Nutrient Threshold <sup>1</sup>	Total Nitrogen Nutrient Threshold <sup>1</sup>
Panhandle West	60 µg/L	670 µg/L
Panhandle East	180 µg/L	1030 µg/L
North Central	300 µg/L	1870 µg/L
Peninsular	120 µg/L	1540 µg/L
West Central	490 µg/L	1650 µg/L
South Florida	No numeric nutrient threshold. The narrative criterion in paragraph 62-302.530(47)(b), F.A.C., applies.	No numeric nutrient threshold. The narrative criterion in paragraph 62-302.530(47)(b), F.A.C., applies.

<sup>1</sup>These values are annual geometric mean concentrations not to be exceeded more than once in any three calendar year periods.

## Base File Data for River/Streams: Definitions

- **County:** Name of county in which the system resides.
- **Name:** Stream name that LAKEWATCH uses for the system.
- **GNIS Number:** Number created by USGS's Geographic Names Information System.
- **Water Body Type:** Four different types of systems; lakes, estuaries, river/streams and springs.
- **Period of Record (years):** Number of years a system has been in the LAKEWATCH program.
- **Latitude and Longitude:** Coordinates identifying the exact location of station 1 for each system.

Table 2. Base File Data.

County	St John's
Name	Mill Creek-3
GNIS Number	308032
Water Body Type	River/Stream
Period of Record (years, range)	13 (2005 to 2017)
Latitude	30.0957
Longitude	-81.6357

## Long-Term Data for River/Streams: Definitions

The following long-term data are the primary trophic state parameters collected by LAKEWATCH volunteers and classification variables color and specific conductance (LAKEWATCH recently began analyzing samples quarterly for color and specific conductance):

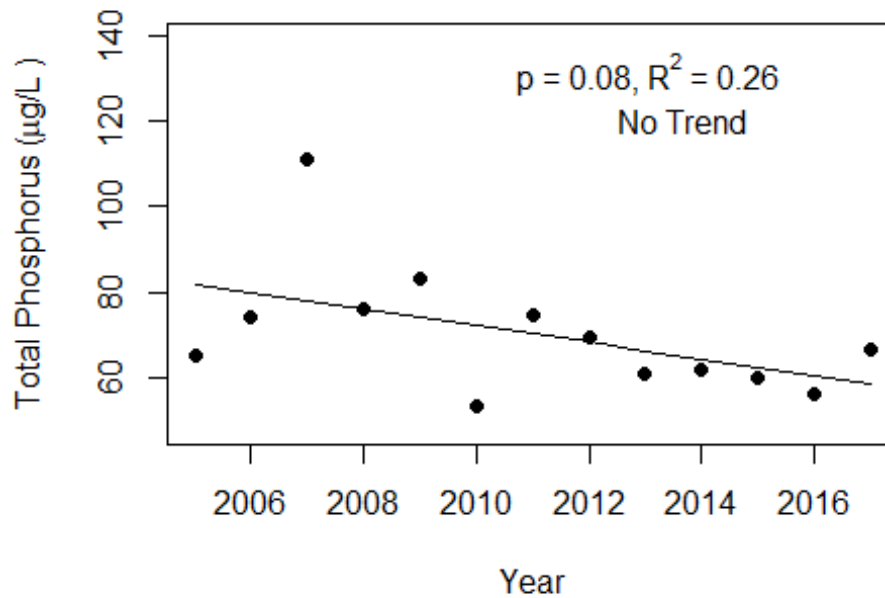
- **Total Phosphorus ( $\mu\text{g/L}$ ):** The nutrient most often limiting growth of plant/algae.
- **Total Nitrogen ( $\mu\text{g/L}$ ):** Another nutrient needed for aquatic plant/algae growth but only limiting when nitrogen to phosphorus ratios are generally less than 10.
- **Chlorophyll-uncorrected ( $\mu\text{g/L}$ ):** Chlorophyll concentrations are used to measure relative abundances of open water algal population.
- **Secchi (ft), Secchi (m):** Secchi measurements are estimates of water clarity.
- **Color (Pt-Co Units):** LAKEWATCH measures true color, which is the color of the water after particles have been filter out.
- **Specific Conductance ( $\mu\text{S/cm@25}^\circ\text{C}$ ):** Measurement of the ability of water to conduct electricity and can be used to estimate the amount of dissolved materials in water.

Table 3. Long-term trophic state data collected monthly by LAKEWATCH volunteers and color and specific conductance (collected quarterly).

Parameter	Minimum and Maximum Annual Geometric Means	Grand Geometric Mean (Sampling years)
Total Phosphorus ( $\mu\text{g/L}$ )	54 - 111	69 (13)
Total Nitrogen ( $\mu\text{g/L}$ )	823 - 1483	1079 (13)
Chlorophyll- uncorrected ( $\mu\text{g/L}$ )	3 - 29	14 (13)
Secchi (ft)	1.3 - 3.5	2.5 (13)
Secchi (m)	0.4 -1.1	1.1 (13)
Color (Pt-Co Units)	42 - 456	112 (11)
Specific Conductance ( $\mu\text{S/cm@25 C}$ )	253 - 6928	915 (10)

Figure 2 and Figure 3. Trend plots of annual average total phosphorus and annual average total nitrogen versus year. The  $R^2$  value indicates the strength of the relations (ranges from 0.0 to 1.0; higher the  $R^2$  the stronger the relation) and the p value indicates if the relation is significant ( $p < 0.05$  is significant). Trend status are reported on the plots.

### Mill Creek-3 (St John's)



### Mill Creek-3 (St John's)

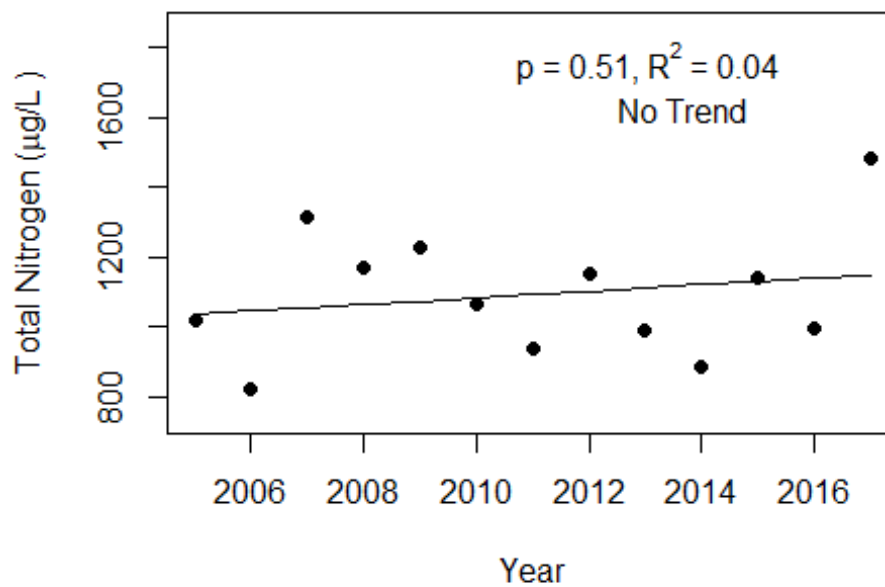
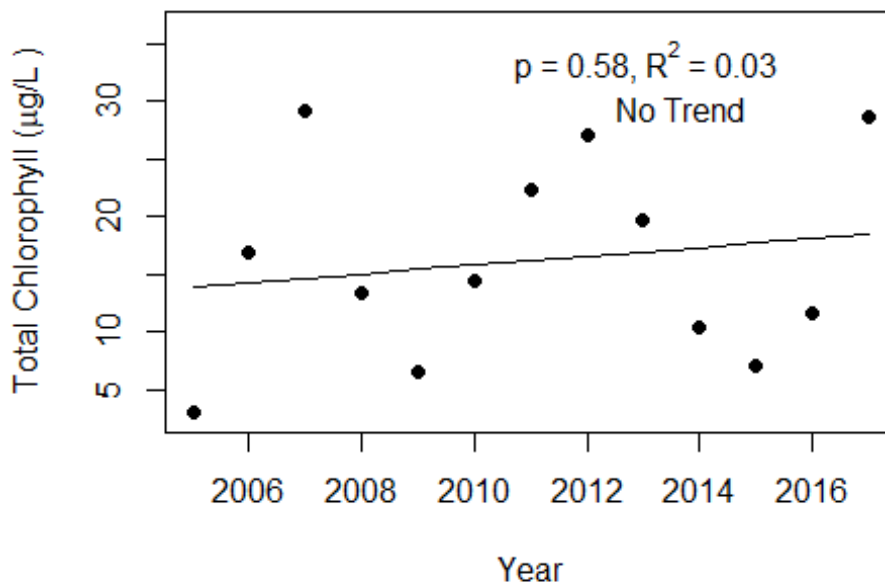
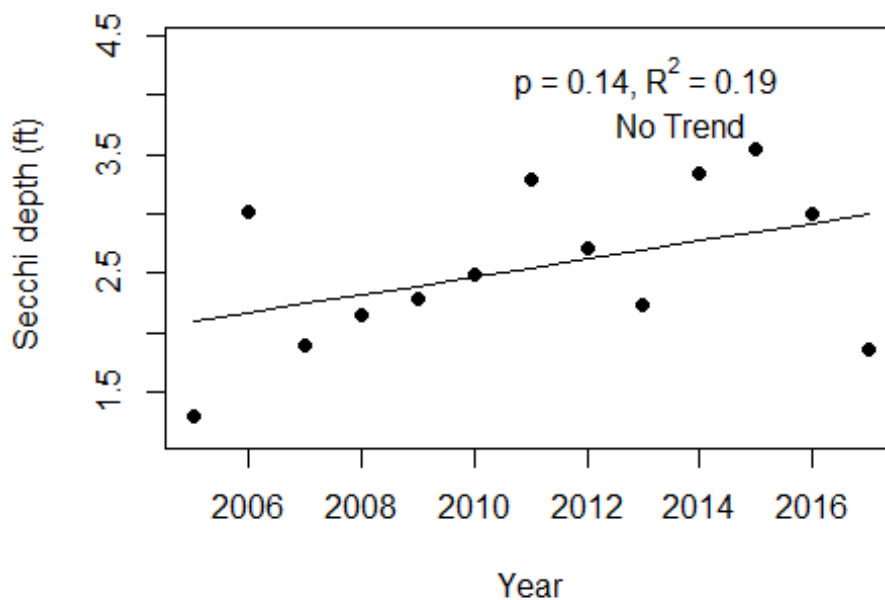


Figure 4 and Figure 5. Trend plots of annual average chlorophyll and annual average Secchi versus year. The  $R^2$  value indicates the strength of the relations (ranges from 0.0 to 1.0; higher the  $R^2$  the stronger the relations and the p value indicates if the relation is significant ( $p < 0.05$  is significant). Trend status are reported on plots.

### Mill Creek-3 (St John's)



### Mill Creek-3 (St John's)



**Introduction for River/Streams**

This report summarizes data collected on systems that have been part of the LAKEWATCH program. Data are from the period of record for individual systems. The first part of this summary lists background data for each system, the second part lists the long-term data geometric means and ranges and the final part are the trend plots for nutrients, chlorophyll, and Secchi depth. **Plots were only made for systems with five or more years of data.**

For decades Florida has had a narrative nutrient water quality criterion in place to protect Florida’s waters against nutrient over-enrichment. In 2009, the Florida Department of Environmental Protection (FDEP) initiated rulemaking and, by 2011, adopted what would be the first set of statewide numeric nutrient standards for Florida’s waters. By 2015, almost all the remaining waters in Florida have numeric nutrient standards (see for FDEP Regulation Nutrient Criteria’s for: Streams, spring vents: <https://www.flrules.org/gateway/RuleNo.asp?title=SURFACE%20WATER%20QUALITY%20STANDARDS&ID=62-302.531>).

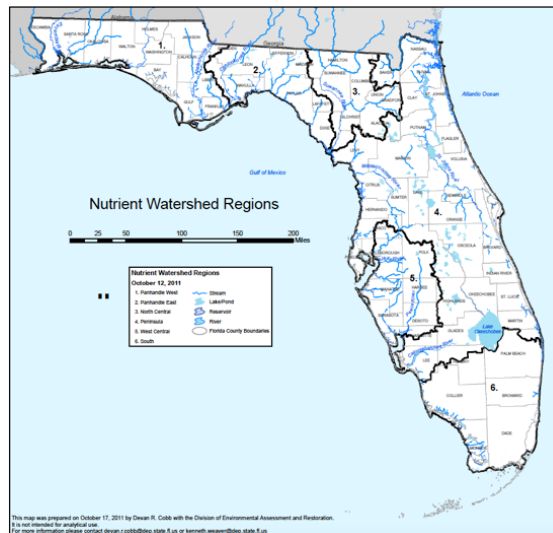


Figure 1. Map showing nutrient thresholds areas for streams set forth by FDEP.

Table 1. The nutrient thresholds for streams are listed in table below along with the map showing zones.

Nutrient Watershed Region	Total Phosphorus Nutrient Threshold <sup>1</sup>	Total Nitrogen Nutrient Threshold <sup>1</sup>
Panhandle West	60 µg/L	670 µg/L
Panhandle East	180 µg/L	1030 µg/L
North Central	300 µ/L	1870 µg/L
Peninsular	120 µg/L	1540 µg/L
West Central	490 µg/L	1650 µg/L
South Florida	No numeric nutrient threshold. The narrative criterion in paragraph 62-302.530(47)(b), F.A.C., applies.	No numeric nutrient threshold. The narrative criterion in paragraph 62-302.530(47)(b), F.A.C., applies.

<sup>1</sup>These values are annual geometric mean concentrations not to be exceeded more than once in any three calendar year periods.

**Base File Data for River/Streams: Definitions**

- **County:** Name of county in which the system resides.
- **Name:** Stream name that LAKEWATCH uses for the system.
- **GNIS Number:** Number created by USGS's Geographic Names Information System.
- **Water Body Type:** Four different types of systems; lakes, estuaries, river/streams and springs.
- **Period of Record (years):** Number of years a system has been in the LAKEWATCH program.
- **Latitude and Longitude:** Coordinates identifying the exact location of station 1 for each system.

Table 2. Base File Data.

County	Sumter
Name	Panasoffkee River-1
GNIS Number	
Water Body Type	River/Stream
Period of Record (years, range)	1 (2019 to 2019)
Latitude	28.7998
Longitude	-82.1533

### Long-Term Data for River/Streams: Definitions

The following long-term data are the primary trophic state parameters collected by LAKEWATCH volunteers and classification variables color and specific conductance (LAKEWATCH recently began analyzing samples quarterly for color and specific conductance):

- **Total Phosphorus ( $\mu\text{g/L}$ ):** The nutrient most often limiting growth of plant/algae.
- **Total Nitrogen ( $\mu\text{g/L}$ ):** Another nutrient needed for aquatic plant/algae growth but only limiting when nitrogen to phosphorus ratios are generally less than 10.
- **Chlorophyll-uncorrected ( $\mu\text{g/L}$ ):** Chlorophyll concentrations are used to measure relative abundances of open water algal population.
- **Secchi (ft), Secchi (m):** Secchi measurements are estimates of water clarity.
- **Color (Pt-Co Units):** LAKEWATCH measures true color, which is the color of the water after particles have been filter out.
- **Specific Conductance ( $\mu\text{S/cm@25}^\circ\text{C}$ ):** Measurement of the ability of water to conduct electricity and can be used to estimate the amount of dissolved materials in water.

Table 3. Long-term trophic state data collected monthly by LAKEWATCH volunteers and color and specific conductance (collected quarterly).

Parameter	Minimum and Maximum Annual Geometric Means	Grand Geometric Mean (Sampling years)
Total Phosphorus ( $\mu\text{g/L}$ )	24 - 24	24 (1)
Total Nitrogen ( $\mu\text{g/L}$ )	625 - 625	625 (1)
Chlorophyll- uncorrected ( $\mu\text{g/L}$ )	7 - 7	7 (1)
Secchi (ft)	3.7 - 3.7	3.7 (1)
Secchi (m)	1.1 -1.1	1.1 (1)
Color (Pt-Co Units)	-	(0)
Specific Conductance ( $\mu\text{S/cm@25 C}$ )	-	(0)

## Watershed Region: Peninsular Using Data Downloaded 1/31/22

### Introduction for River/Streams

This report summarizes data collected on systems that have been part of the LAKEWATCH program. Data are from the period of record for individual systems. The first part of this summary lists background data for each system, the second part lists the long-term data geometric means and ranges and the final part are the trend plots for nutrients, chlorophyll, and Secchi depth. **Plots were only made for systems with five or more years of data.**

For decades Florida has had a narrative nutrient water quality criterion in place to protect Florida’s waters against nutrient over-enrichment. In 2009, the Florida Department of Environmental Protection (FDEP) initiated rulemaking and, by 2011, adopted what would be the first set of statewide numeric nutrient standards for Florida’s waters. By 2015, almost all the remaining waters in Florida have numeric nutrient standards (see for FDEP Regulation Nutrient Criteria’s for: Streams, spring vents:

<https://www.flrules.org/gateway/RuleNo.asp?title=SURFACE%20WATER%20QUALITY%20STANDARDS&ID=62-302.531>).

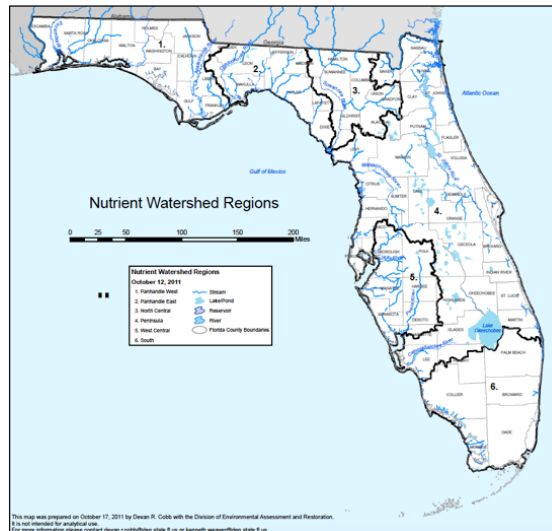


Figure 1. Map showing nutrient thresholds areas for streams set forth by FDEP.

Table 1. The nutrient thresholds for streams are listed in table below along with the map showing zones.

Nutrient Watershed Region	Total Phosphorus Nutrient Threshold <sup>1</sup>	Total Nitrogen Nutrient Threshold <sup>1</sup>
Panhandle West	60 µg/L	670 µg/L
Panhandle East	180 µg/L	1030 µg/L
North Central	300 µ/L	1870 µg/L
Peninsular	120 µg/L	1540 µg/L
West Central	490 µg/L	1650 µg/L
South Florida	No numeric nutrient threshold. The narrative criterion in paragraph 62-302.530(47)(b), F.A.C., applies.	No numeric nutrient threshold. The narrative criterion in paragraph 62-302.530(47)(b), F.A.C., applies.

<sup>1</sup>These values are annual geometric mean concentrations not to be exceeded more than once in any three calendar year periods.

### Base File Data for River/Streams: Definitions

- **County:** Name of county in which the system resides.
- **Name:** Stream name that LAKEWATCH uses for the system.
- **GNIS Number:** Number created by USGS's Geographic Names Information System.
- **Water Body Type:** Four different types of systems; lakes, estuaries, river/streams and springs.
- **Period of Record (years):** Number of years a system has been in the LAKEWATCH program.
- **Latitude and Longitude:** Coordinates identifying the exact location of station 1 for each system.

Table 2. Base File Data.

County	Sumter
Name	Panasoffkee River-2
GNIS Number	
Water Body Type	River/Stream
Period of Record (years, range)	1 (2019 to 2019)
Latitude	28.7984
Longitude	-82.1609

### Long-Term Data for River/Streams: Definitions

The following long-term data are the primary trophic state parameters collected by LAKEWATCH volunteers and classification variables color and specific conductance (LAKEWATCH recently began analyzing samples quarterly for color and specific conductance):

- **Total Phosphorus ( $\mu\text{g/L}$ ):** The nutrient most often limiting growth of plant/algae.
- **Total Nitrogen ( $\mu\text{g/L}$ ):** Another nutrient needed for aquatic plant/algae growth but only limiting when nitrogen to phosphorus ratios are generally less than 10.
- **Chlorophyll-uncorrected ( $\mu\text{g/L}$ ):** Chlorophyll concentrations are used to measure relative abundances of open water algal population.
- **Secchi (ft), Secchi (m):** Secchi measurements are estimates of water clarity.
- **Color (Pt-Co Units):** LAKEWATCH measures true color, which is the color of the water after particles have been filter out.
- **Specific Conductance ( $\mu\text{S/cm@25}^\circ\text{C}$ ):** Measurement of the ability of water to conduct electricity and can be used to estimate the amount of dissolved materials in water.

Table 3. Long-term trophic state data collected monthly by LAKEWATCH volunteers and color and specific conductance (collected quarterly).

Parameter	Minimum and Maximum Annual Geometric Means	Grand Geometric Mean (Sampling years)
Total Phosphorus ( $\mu\text{g/L}$ )	22 - 22	22 (1)
Total Nitrogen ( $\mu\text{g/L}$ )	595 - 595	595 (1)
Chlorophyll- uncorrected ( $\mu\text{g/L}$ )	6 - 6	6 (1)
Secchi (ft)	4.3 - 4.3	4.3 (1)
Secchi (m)	1.3 - 1.3	1.3 (1)
Color (Pt-Co Units)	-	(0)
Specific Conductance ( $\mu\text{S/cm@25 C}$ )	-	(0)



## Watershed Region: Peninsular Using Data Downloaded 1/31/22

### Introduction for River/Streams

This report summarizes data collected on systems that have been part of the LAKEWATCH program. Data are from the period of record for individual systems. The first part of this summary lists background data for each system, the second part lists the long-term data geometric means and ranges and the final part are the trend plots for nutrients, chlorophyll, and Secchi depth. **Plots were only made for systems with five or more years of data.**

For decades Florida has had a narrative nutrient water quality criterion in place to protect Florida's waters against nutrient over-enrichment. In 2009, the Florida Department of Environmental Protection (FDEP) initiated rulemaking and, by 2011, adopted what would be the first set of statewide numeric nutrient standards for Florida's waters. By 2015, almost all the remaining waters in Florida have numeric nutrient standards (see for FDEP Regulation Nutrient Criteria's for: Streams, spring vents:

<https://www.flrules.org/gateway/RuleNo.asp?title=SURFACE%20WATER%20QUALITY%20STANDARDS&ID=62-302.531>).



Figure 1. Map showing nutrient thresholds areas for streams set forth by FDEP.

Table 1. The nutrient thresholds for streams are listed in table below along with the map showing zones.

Nutrient Watershed Region	Total Phosphorus Nutrient Threshold <sup>1</sup>	Total Nitrogen Nutrient Threshold <sup>1</sup>
Panhandle West	60 µg/L	670 µg/L
Panhandle East	180 µg/L	1030 µg/L
North Central	300 µ/L	1870 µg/L
Peninsular	120 µg/L	1540 µg/L
West Central	490 µg/L	1650 µg/L
South Florida	No numeric nutrient threshold. The narrative criterion in paragraph 62-302.530(47)(b), F.A.C., applies.	No numeric nutrient threshold. The narrative criterion in paragraph 62-302.530(47)(b), F.A.C., applies.

<sup>1</sup>These values are annual geometric mean concentrations not to be exceeded more than once in any three calendar year periods.

### Base File Data for River/Streams: Definitions

- **County:** Name of county in which the system resides.
- **Name:** Stream name that LAKEWATCH uses for the system.
- **GNIS Number:** Number created by USGS's Geographic Names Information System.
- **Water Body Type:** Four different types of systems; lakes, estuaries, river/streams and springs.
- **Period of Record (years):** Number of years a system has been in the LAKEWATCH program.
- **Latitude and Longitude:** Coordinates identifying the exact location of station 1 for each system.

Table 2. Base File Data.

County	Sumter
Name	Panasoffkee River-3
GNIS Number	
Water Body Type	River/Stream
Period of Record (years, range)	1 (2019 to 2019)
Latitude	28.7983
Longitude	-82.1686

### Long-Term Data for River/Streams: Definitions

The following long-term data are the primary trophic state parameters collected by LAKEWATCH volunteers and classification variables color and specific conductance (LAKEWATCH recently began analyzing samples quarterly for color and specific conductance):

- **Total Phosphorus ( $\mu\text{g/L}$ ):** The nutrient most often limiting growth of plant/algae.
- **Total Nitrogen ( $\mu\text{g/L}$ ):** Another nutrient needed for aquatic plant/algae growth but only limiting when nitrogen to phosphorus ratios are generally less than 10.
- **Chlorophyll-uncorrected ( $\mu\text{g/L}$ ):** Chlorophyll concentrations are used to measure relative abundances of open water algal population.
- **Secchi (ft), Secchi (m):** Secchi measurements are estimates of water clarity.
- **Color (Pt-Co Units):** LAKEWATCH measures true color, which is the color of the water after particles have been filter out.
- **Specific Conductance ( $\mu\text{S/cm@25}^\circ\text{C}$ ):** Measurement of the ability of water to conduct electricity and can be used to estimate the amount of dissolved materials in water.

Table 3. Long-term trophic state data collected monthly by LAKEWATCH volunteers and color and specific conductance (collected quarterly).

Parameter	Minimum and Maximum Annual Geometric Means	Grand Geometric Mean (Sampling years)
Total Phosphorus ( $\mu\text{g/L}$ )	70 - 70	70 (1)
Total Nitrogen ( $\mu\text{g/L}$ )	1184 - 1184	1184 (1)
Chlorophyll- uncorrected ( $\mu\text{g/L}$ )	4 - 4	4 (1)
Secchi (ft)	2.3 - 2.3	2.3 (1)
Secchi (m)	0.7 -0.7	0.7 (1)
Color (Pt-Co Units)	-	(0)
Specific Conductance ( $\mu\text{S/cm@25 C}$ )	-	(0)