

**LAKEWATCH Report for CBA River-7 in Holmes County**  
**Watershed Region: Panhandle West**  
**Using Data Downloaded 1/31/22**

**Introduction for River/Streams**

This report summarizes data collected on systems that have been part of the LAKEWATCH program. Data are from the period of record for individual systems. The first part of this summary lists background data for each system, the second part lists the long-term data geometric means and ranges and the final part are the trend plots for nutrients, chlorophyll, and Secchi depth. **Plots were only made for systems with five or more years of data.**

For decades Florida has had a narrative nutrient water quality criterion in place to protect Florida’s waters against nutrient over-enrichment. In 2009, the Florida Department of Environmental Protection (FDEP) initiated rulemaking and, by 2011, adopted what would be the first set of statewide numeric nutrient standards for Florida’s waters. By 2015, almost all the remaining waters in Florida have numeric nutrient standards (see for FDEP Regulation Nutrient Criteria’s for: Streams, spring vents:

<https://www.flrules.org/gateway/RuleNo.asp?title=SURFACE%20WATER%20QUALITY%20STANDARDS&ID=62-302.531>).

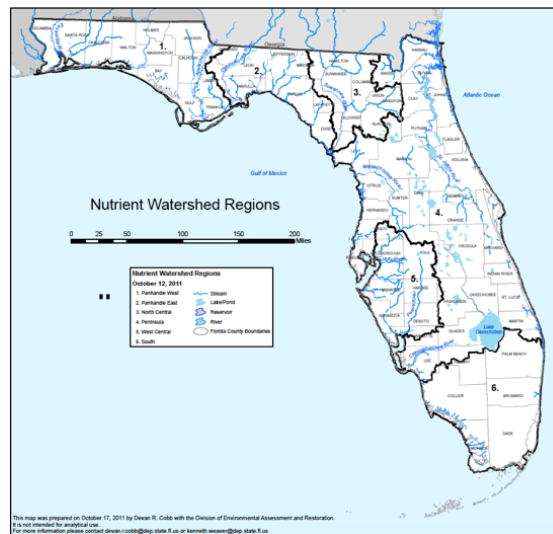


Figure 1. Map showing nutrient thresholds areas for streams set forth by FDEP.

Table 1. The nutrient thresholds for streams are listed in table below along with the map showing zones.

Nutrient Watershed Region	Total Phosphorus Nutrient Threshold <sup>1</sup>	Total Nitrogen Nutrient Threshold <sup>1</sup>
Panhandle West	60 µg/L	670 µg/L
Panhandle East	180 µg/L	1030 µg/L
North Central	300 µg/L	1870 µg/L
Peninsular	120 µg/L	1540 µg/L
West Central	490 µg/L	1650 µg/L
South Florida	No numeric nutrient threshold. The narrative criterion in paragraph 62-302.530(47)(b), F.A.C., applies.	No numeric nutrient threshold. The narrative criterion in paragraph 62-302.530(47)(b), F.A.C., applies.

<sup>1</sup>These values are annual geometric mean concentrations not to be exceeded more than once in any three calendar year periods.

## Base File Data for River/Streams: Definitions

- **County:** Name of county in which the system resides.
- **Name:** Stream name that LAKEWATCH uses for the system.
- **GNIS Number:** Number created by USGS's Geographic Names Information System.
- **Water Body Type:** Four different types of systems; lakes, estuaries, river/streams and springs.
- **Period of Record (years):** Number of years a system has been in the LAKEWATCH program.
- **Latitude and Longitude:** Coordinates identifying the exact location of station 1 for each system.

Table 2. Base File Data.

County	Holmes
Name	CBA River-7
GNIS Number	294307
Water Body Type	River/Stream
Period of Record (years, range)	12 (2010 to 2021)
Latitude	30.7754
Longitude	-85.8274

## Long-Term Data for River/Streams: Definitions

The following long-term data are the primary trophic state parameters collected by LAKEWATCH volunteers and classification variables color and specific conductance (LAKEWATCH recently began analyzing samples quarterly for color and specific conductance):

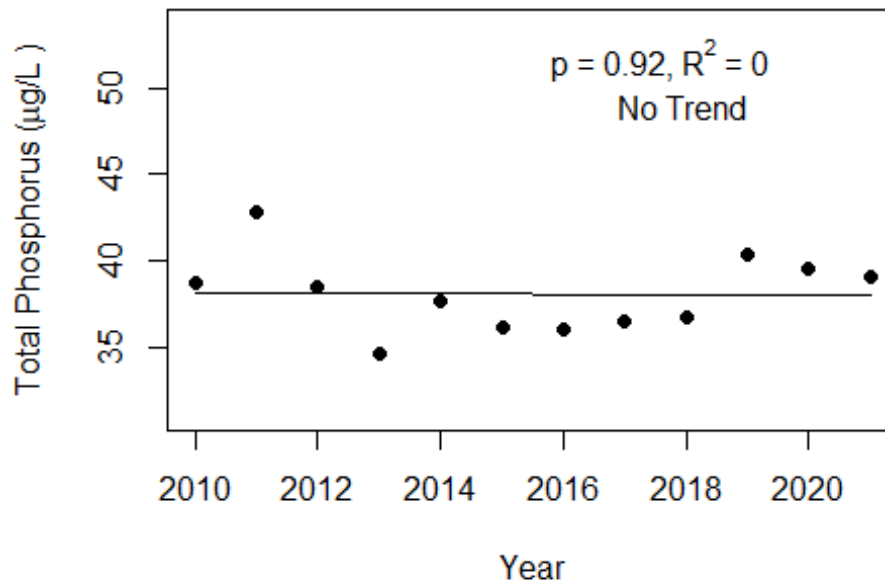
- **Total Phosphorus ( $\mu\text{g/L}$ ):** The nutrient most often limiting growth of plant/algae.
- **Total Nitrogen ( $\mu\text{g/L}$ ):** Another nutrient needed for aquatic plant/algae growth but only limiting when nitrogen to phosphorus ratios are generally less than 10.
- **Chlorophyll-uncorrected ( $\mu\text{g/L}$ ):** Chlorophyll concentrations are used to measure relative abundances of open water algal population.
- **Secchi (ft), Secchi (m):** Secchi measurements are estimates of water clarity.
- **Color (Pt-Co Units):** LAKEWATCH measures true color, which is the color of the water after particles have been filter out.
- **Specific Conductance ( $\mu\text{S/cm@25}^\circ\text{C}$ ):** Measurement of the ability of water to conduct electricity and can be used to estimate the amount of dissolved materials in water.

Table 3. Long-term trophic state data collected monthly by LAKEWATCH volunteers and color and specific conductance (collected quarterly).

Parameter	Minimum and Maximum Annual Geometric Means	Grand Geometric Mean (Sampling years)
Total Phosphorus ( $\mu\text{g/L}$ )	35 - 43	38 (12)
Total Nitrogen ( $\mu\text{g/L}$ )	695 - 928	787 (12)
Chlorophyll- uncorrected ( $\mu\text{g/L}$ )	1 - 3	2 (12)
Secchi (ft)	1.7 - 3.5	2.3 (12)
Secchi (m)	0.5 -1.1	1.1 (12)
Color (Pt-Co Units)	10 - 22	14 (12)
Specific Conductance ( $\mu\text{S/cm@25 C}$ )	68 - 140	88 (12)

Figure 2 and Figure 3. Trend plots of annual average total phosphorus and annual average total nitrogen versus year. The  $R^2$  value indicates the strength of the relations (ranges from 0.0 to 1.0; higher the  $R^2$  the stronger the relation) and the p value indicates if the relation is significant ( $p < 0.05$  is significant). Trend status are reported on the plots.

### CBA River-7 (Holmes)



### CBA River-7 (Holmes)

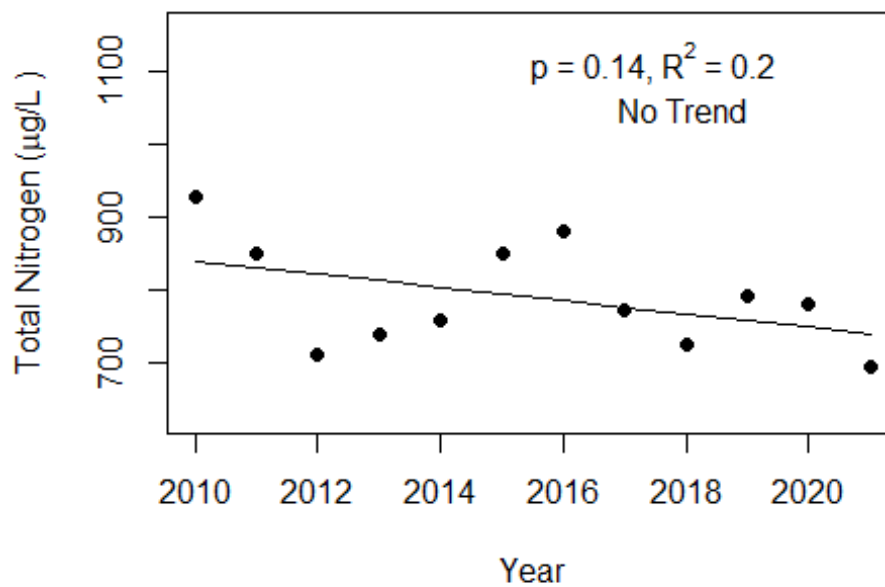
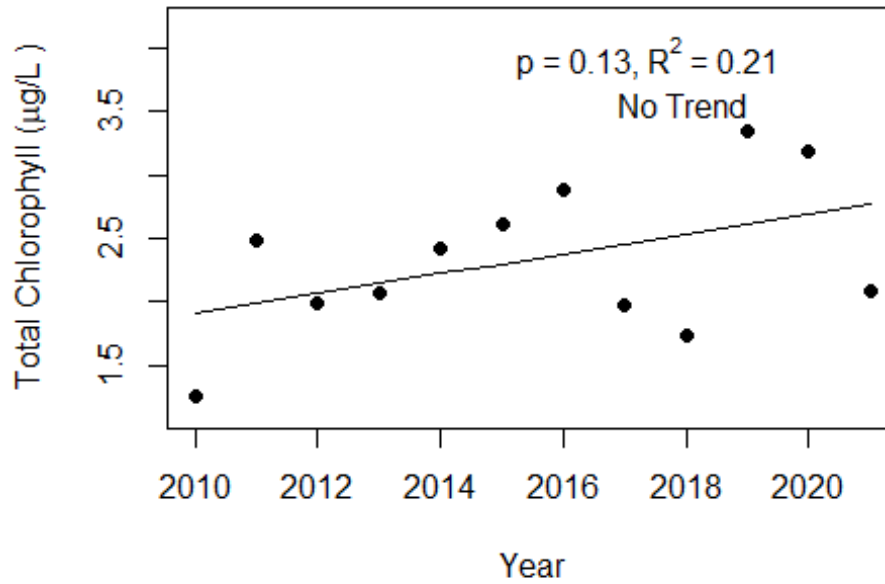
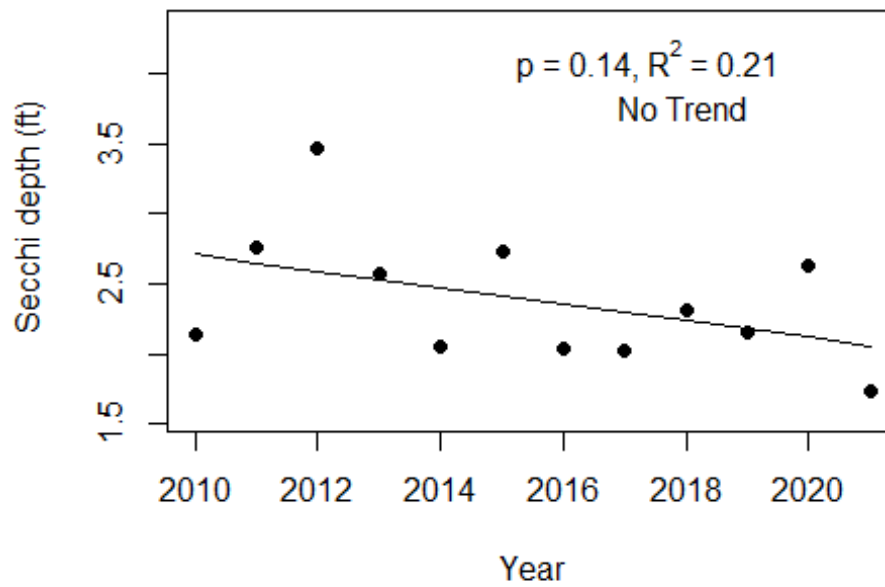


Figure 4 and Figure 5. Trend plots of annual average chlorophyll and annual average Secchi versus year. The  $R^2$  value indicates the strength of the relations (ranges from 0.0 to 1.0; higher the  $R^2$  the stronger the relations and the p value indicates if the relation is significant ( $p < 0.05$  is significant). Trend status are reported on plots.

### CBA River-7 (Holmes)



### CBA River-7 (Holmes)



**LAKEWATCH Report for CBA River-8 in Holmes County**  
**Watershed Region: Panhandle West**  
**Using Data Downloaded 1/31/22**

**Introduction for River/Streams**

This report summarizes data collected on systems that have been part of the LAKEWATCH program. Data are from the period of record for individual systems. The first part of this summary lists background data for each system, the second part lists the long-term data geometric means and ranges and the final part are the trend plots for nutrients, chlorophyll, and Secchi depth. **Plots were only made for systems with five or more years of data.**

For decades Florida has had a narrative nutrient water quality criterion in place to protect Florida’s waters against nutrient over-enrichment. In 2009, the Florida Department of Environmental Protection (FDEP) initiated rulemaking and, by 2011, adopted what would be the first set of statewide numeric nutrient standards for Florida’s waters. By 2015, almost all the remaining waters in Florida have numeric nutrient standards (see for FDEP Regulation Nutrient Criteria’s for: Streams, spring vents:

<https://www.flrules.org/gateway/RuleNo.asp?title=SURFACE%20WATER%20QUALITY%20STANDARDS&ID=62-302.531>).



Figure 1. Map showing nutrient thresholds areas for streams set forth by FDEP.

Table 1. The nutrient thresholds for streams are listed in table below along with the map showing zones.

Nutrient Watershed Region	Total Phosphorus Nutrient Threshold <sup>1</sup>	Total Nitrogen Nutrient Threshold <sup>1</sup>
Panhandle West	60 µg/L	670 µg/L
Panhandle East	180 µg/L	1030 µg/L
North Central	300 µg/L	1870 µg/L
Peninsular	120 µg/L	1540 µg/L
West Central	490 µg/L	1650 µg/L
South Florida	No numeric nutrient threshold. The narrative criterion in paragraph 62-302.530(47)(b), F.A.C., applies.	No numeric nutrient threshold. The narrative criterion in paragraph 62-302.530(47)(b), F.A.C., applies.

<sup>1</sup>These values are annual geometric mean concentrations not to be exceeded more than once in any three calendar year periods.

## Base File Data for River/Streams: Definitions

- **County:** Name of county in which the system resides.
- **Name:** Stream name that LAKEWATCH uses for the system.
- **GNIS Number:** Number created by USGS's Geographic Names Information System.
- **Water Body Type:** Four different types of systems; lakes, estuaries, river/streams and springs.
- **Period of Record (years):** Number of years a system has been in the LAKEWATCH program.
- **Latitude and Longitude:** Coordinates identifying the exact location of station 1 for each system.

Table 2. Base File Data.

County	Holmes
Name	CBA River-8
GNIS Number	294307
Water Body Type	River/Stream
Period of Record (years, range)	12 (2010 to 2021)
Latitude	30.8898
Longitude	-85.8823

## Long-Term Data for River/Streams: Definitions

The following long-term data are the primary trophic state parameters collected by LAKEWATCH volunteers and classification variables color and specific conductance (LAKEWATCH recently began analyzing samples quarterly for color and specific conductance):

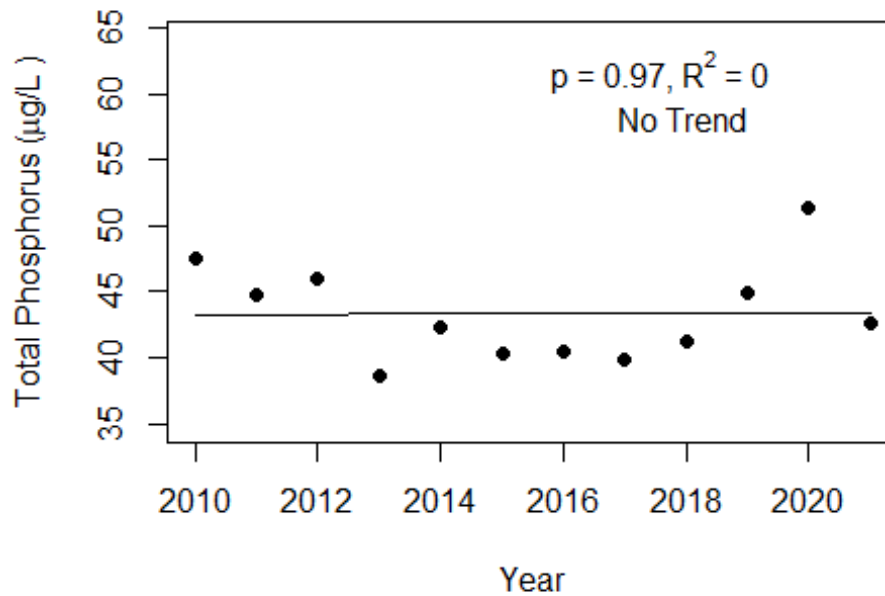
- **Total Phosphorus ( $\mu\text{g/L}$ ):** The nutrient most often limiting growth of plant/algae.
- **Total Nitrogen ( $\mu\text{g/L}$ ):** Another nutrient needed for aquatic plant/algae growth but only limiting when nitrogen to phosphorus ratios are generally less than 10.
- **Chlorophyll-uncorrected ( $\mu\text{g/L}$ ):** Chlorophyll concentrations are used to measure relative abundances of open water algal population.
- **Secchi (ft), Secchi (m):** Secchi measurements are estimates of water clarity.
- **Color (Pt-Co Units):** LAKEWATCH measures true color, which is the color of the water after particles have been filter out.
- **Specific Conductance ( $\mu\text{S/cm@25}^\circ\text{C}$ ):** Measurement of the ability of water to conduct electricity and can be used to estimate the amount of dissolved materials in water.

Table 3. Long-term trophic state data collected monthly by LAKEWATCH volunteers and color and specific conductance (collected quarterly).

Parameter	Minimum and Maximum Annual Geometric Means	Grand Geometric Mean (Sampling years)
Total Phosphorus ( $\mu\text{g/L}$ )	39 - 51	43 (12)
Total Nitrogen ( $\mu\text{g/L}$ )	743 - 1154	856 (12)
Chlorophyll- uncorrected ( $\mu\text{g/L}$ )	1 - 3	2 (12)
Secchi (ft)	1.6 - 2.8	2.2 (12)
Secchi (m)	0.5 - 0.9	0.9 (12)
Color (Pt-Co Units)	10 - 19	13 (12)
Specific Conductance ( $\mu\text{S/cm@25 C}$ )	67 - 107	80 (12)

Figure 2 and Figure 3. Trend plots of annual average total phosphorus and annual average total nitrogen versus year. The  $R^2$  value indicates the strength of the relations (ranges from 0.0 to 1.0; higher the  $R^2$  the stronger the relation) and the p value indicates if the relation is significant ( $p < 0.05$  is significant). Trend status are reported on the plots.

### CBA River-8 (Holmes)



### CBA River-8 (Holmes)

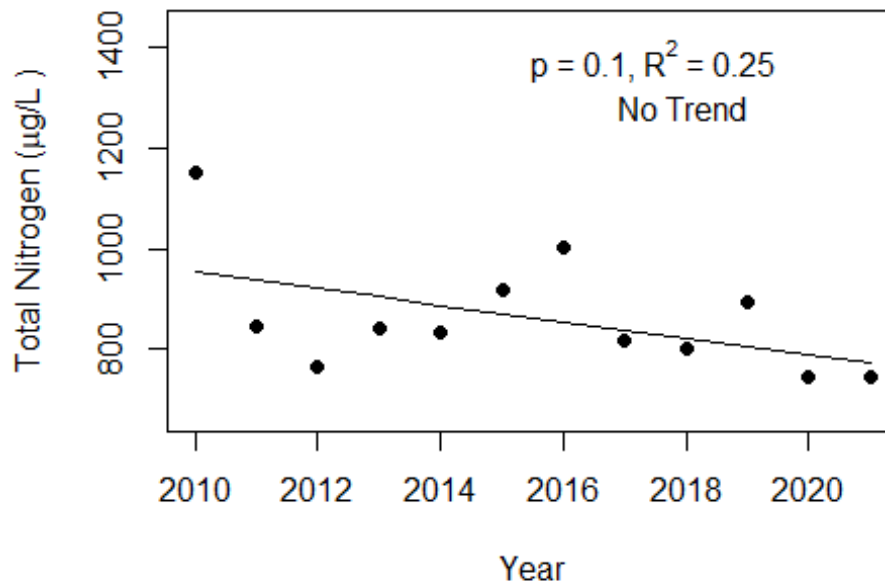
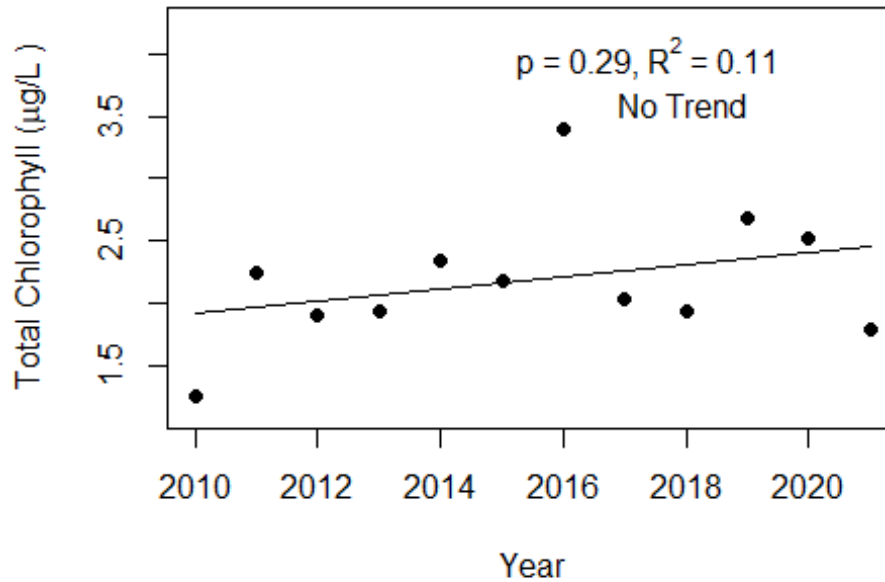
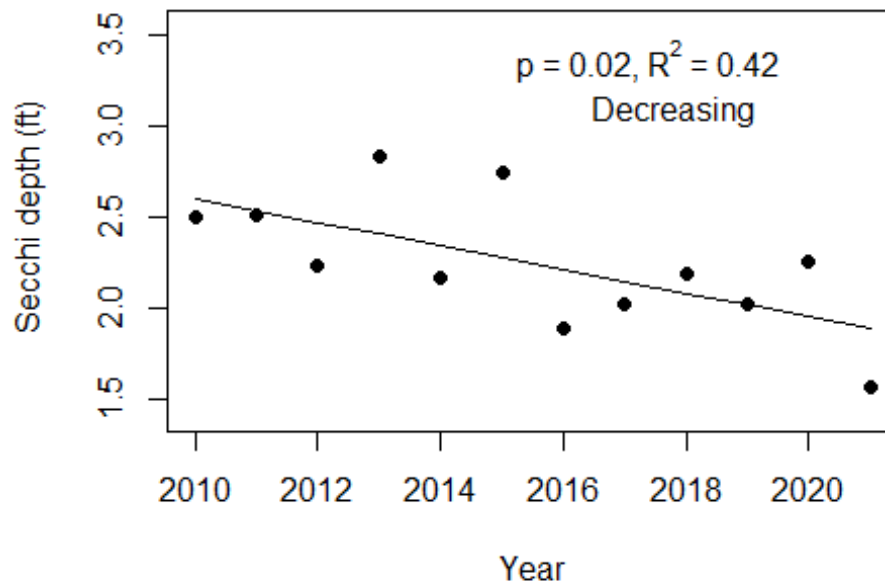


Figure 4 and Figure 5. Trend plots of annual average chlorophyll and annual average Secchi versus year. The  $R^2$  value indicates the strength of the relations (ranges from 0.0 to 1.0; higher the  $R^2$  the stronger the relations and the p value indicates if the relation is significant ( $p < 0.05$  is significant). Trend status are reported on plots.

### CBA River-8 (Holmes)



### CBA River-8 (Holmes)





**LAKEWATCH Report for CBA River-9 in Holmes County**  
**Watershed Region: Panhandle West**  
**Using Data Downloaded 1/31/22**

**Introduction for River/Streams**

This report summarizes data collected on systems that have been part of the LAKEWATCH program. Data are from the period of record for individual systems. The first part of this summary lists background data for each system, the second part lists the long-term data geometric means and ranges and the final part are the trend plots for nutrients, chlorophyll, and Secchi depth. **Plots were only made for systems with five or more years of data.**

For decades Florida has had a narrative nutrient water quality criterion in place to protect Florida’s waters against nutrient over-enrichment. In 2009, the Florida Department of Environmental Protection (FDEP) initiated rulemaking and, by 2011, adopted what would be the first set of statewide numeric nutrient standards for Florida’s waters. By 2015, almost all the remaining waters in Florida have numeric nutrient standards (see for FDEP Regulation Nutrient Criteria’s for: Streams, spring vents: <https://www.flrules.org/gateway/RuleNo.asp?title=SURFACE%20WATER%20QUALITY%20STANDARDS&ID=62-302.531>).



Figure 1. Map showing nutrient thresholds areas for streams set forth by FDEP.

Table 1. The nutrient thresholds for streams are listed in table below along with the map showing zones.

Nutrient Watershed Region	Total Phosphorus Nutrient Threshold <sup>1</sup>	Total Nitrogen Nutrient Threshold <sup>1</sup>
Panhandle West	60 µg/L	670 µg/L
Panhandle East	180 µg/L	1030 µg/L
North Central	300 µg/L	1870 µg/L
Peninsular	120 µg/L	1540 µg/L
West Central	490 µg/L	1650 µg/L
South Florida	No numeric nutrient threshold. The narrative criterion in paragraph 62-302.530(47)(b), F.A.C., applies.	No numeric nutrient threshold. The narrative criterion in paragraph 62-302.530(47)(b), F.A.C., applies.

<sup>1</sup>These values are annual geometric mean concentrations not to be exceeded more than once in any three calendar year periods.

## Base File Data for River/Streams: Definitions

- **County:** Name of county in which the system resides.
- **Name:** Stream name that LAKEWATCH uses for the system.
- **GNIS Number:** Number created by USGS's Geographic Names Information System.
- **Water Body Type:** Four different types of systems; lakes, estuaries, river/streams and springs.
- **Period of Record (years):** Number of years a system has been in the LAKEWATCH program.
- **Latitude and Longitude:** Coordinates identifying the exact location of station 1 for each system.

Table 2. Base File Data.

County	Holmes
Name	CBA River-9
GNIS Number	294307
Water Body Type	River/Stream
Period of Record (years, range)	12 (2010 to 2021)
Latitude	31.1093
Longitude	-85.8315

## Long-Term Data for River/Streams: Definitions

The following long-term data are the primary trophic state parameters collected by LAKEWATCH volunteers and classification variables color and specific conductance (LAKEWATCH recently began analyzing samples quarterly for color and specific conductance):

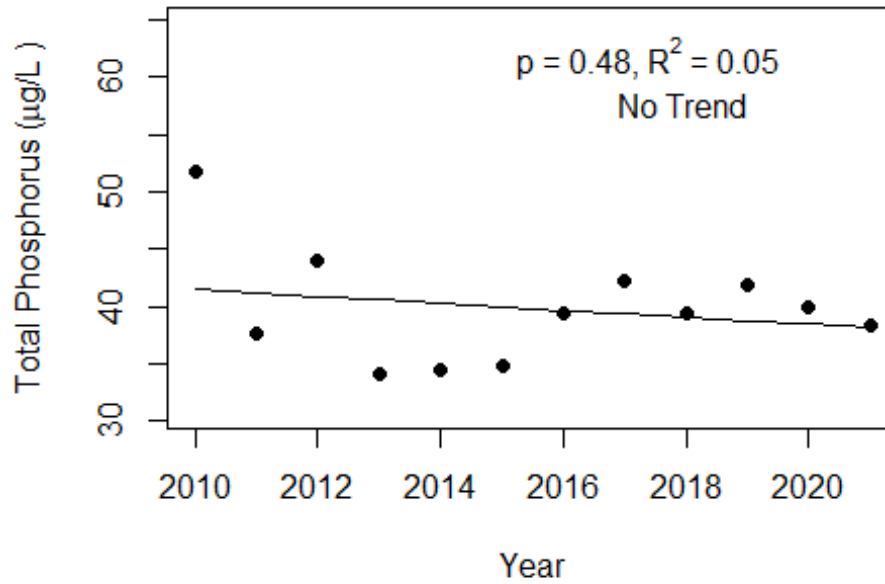
- **Total Phosphorus ( $\mu\text{g/L}$ ):** The nutrient most often limiting growth of plant/algae.
- **Total Nitrogen ( $\mu\text{g/L}$ ):** Another nutrient needed for aquatic plant/algae growth but only limiting when nitrogen to phosphorus ratios are generally less than 10.
- **Chlorophyll-uncorrected ( $\mu\text{g/L}$ ):** Chlorophyll concentrations are used to measure relative abundances of open water algal population.
- **Secchi (ft), Secchi (m):** Secchi measurements are estimates of water clarity.
- **Color (Pt-Co Units):** LAKEWATCH measures true color, which is the color of the water after particles have been filter out.
- **Specific Conductance ( $\mu\text{S/cm@25}^\circ\text{C}$ ):** Measurement of the ability of water to conduct electricity and can be used to estimate the amount of dissolved materials in water.

Table 3. Long-term trophic state data collected monthly by LAKEWATCH volunteers and color and specific conductance (collected quarterly).

Parameter	Minimum and Maximum Annual Geometric Means	Grand Geometric Mean (Sampling years)
Total Phosphorus ( $\mu\text{g/L}$ )	34 - 52	40 (12)
Total Nitrogen ( $\mu\text{g/L}$ )	772 - 1192	935 (12)
Chlorophyll- uncorrected ( $\mu\text{g/L}$ )	1 - 2	2 (12)
Secchi (ft)	1.5 - 2.7	1.9 (11)
Secchi (m)	0.5 - 0.8	0.8 (11)
Color (Pt-Co Units)	8 - 18	11 (12)
Specific Conductance ( $\mu\text{S/cm@25 C}$ )	56 - 93	73 (12)

Figure 2 and Figure 3. Trend plots of annual average total phosphorus and annual average total nitrogen versus year. The  $R^2$  value indicates the strength of the relations (ranges from 0.0 to 1.0; higher the  $R^2$  the stronger the relation) and the p value indicates if the relation is significant ( $p < 0.05$  is significant). Trend status are reported on the plots.

### CBA River-9 (Holmes)



### CBA River-9 (Holmes)

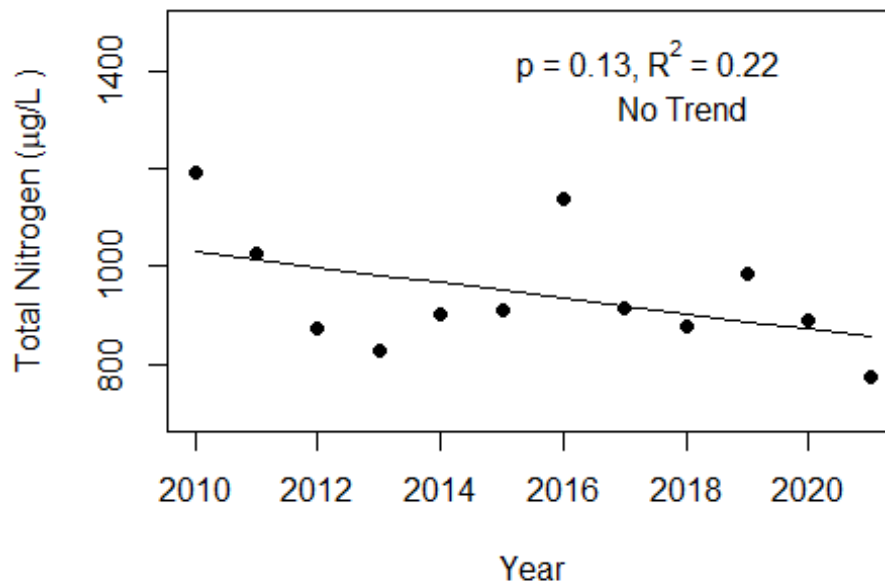
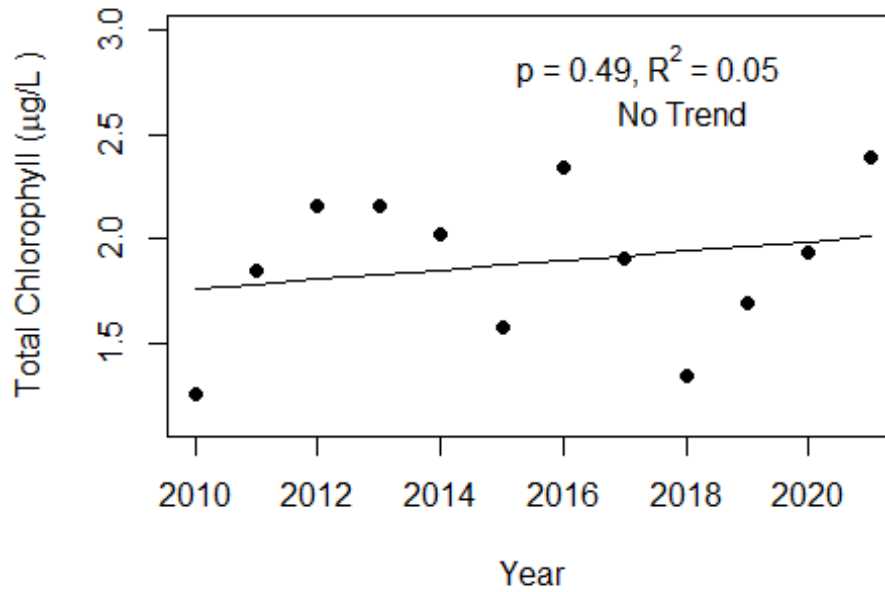
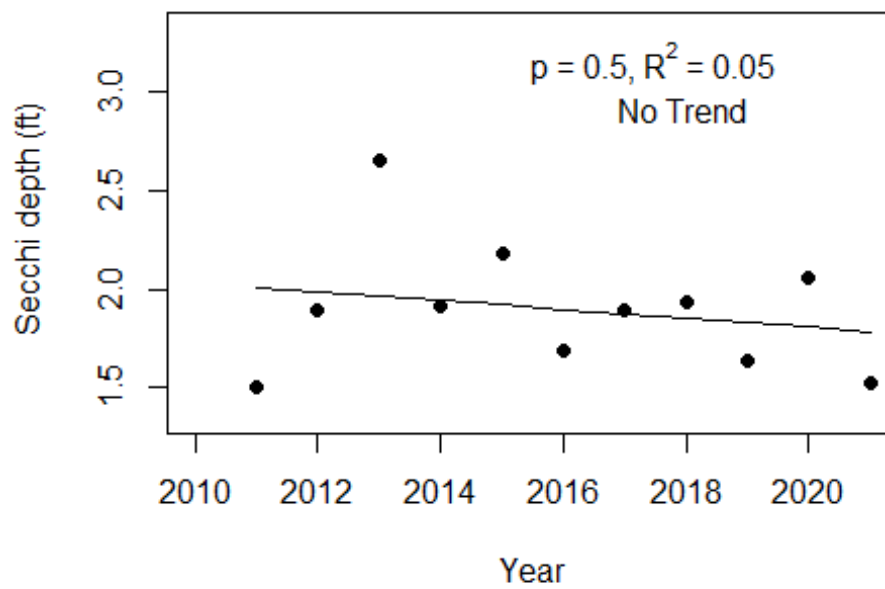


Figure 4 and Figure 5. Trend plots of annual average chlorophyll and annual average Secchi versus year. The  $R^2$  value indicates the strength of the relations (ranges from 0.0 to 1.0; higher the  $R^2$  the stronger the relations and the p value indicates if the relation is significant ( $p < 0.05$  is significant)). Trend status are reported on plots.

### CBA River-9 (Holmes)



### CBA River-9 (Holmes)



**LAKEWATCH Report for Wacissa-1 in Jefferson County**  
**Watershed Region: Panhandle East**  
**Using Data Downloaded 1/31/22**

**Introduction for River/Streams**

This report summarizes data collected on systems that have been part of the LAKEWATCH program. Data are from the period of record for individual systems. The first part of this summary lists background data for each system, the second part lists the long-term data geometric means and ranges and the final part are the trend plots for nutrients, chlorophyll, and Secchi depth. **Plots were only made for systems with five or more years of data.**

For decades Florida has had a narrative nutrient water quality criterion in place to protect Florida’s waters against nutrient over-enrichment. In 2009, the Florida Department of Environmental Protection (FDEP) initiated rulemaking and, by 2011, adopted what would be the first set of statewide numeric nutrient standards for Florida’s waters. By 2015, almost all the remaining waters in Florida have numeric nutrient standards (see for FDEP Regulation Nutrient Criteria’s for: Streams, spring vents:

<https://www.flrules.org/gateway/RuleNo.asp?title=SURFACE%20WATER%20QUALITY%20STANDARDS&ID=62-302.531>).



Figure 1. Map showing nutrient thresholds areas for streams set forth by FDEP.

Table 1. The nutrient thresholds for streams are listed in table below along with the map showing zones.

Nutrient Watershed Region	Total Phosphorus Nutrient Threshold <sup>1</sup>	Total Nitrogen Nutrient Threshold <sup>1</sup>
Panhandle West	60 µg/L	670 µg/L
Panhandle East	180 µg/L	1030 µg/L
North Central	300 µg/L	1870 µg/L
Peninsular	120 µg/L	1540 µg/L
West Central	490 µg/L	1650 µg/L
South Florida	No numeric nutrient threshold. The narrative criterion in paragraph 62-302.530(47)(b), F.A.C., applies.	No numeric nutrient threshold. The narrative criterion in paragraph 62-302.530(47)(b), F.A.C., applies.

<sup>1</sup>These values are annual geometric mean concentrations not to be exceeded more than once in any three calendar year periods.

## Base File Data for River/Streams: Definitions

- **County:** Name of county in which the system resides.
- **Name:** Stream name that LAKEWATCH uses for the system.
- **GNIS Number:** Number created by USGS's Geographic Names Information System.
- **Water Body Type:** Four different types of systems; lakes, estuaries, river/streams and springs.
- **Period of Record (years):** Number of years a system has been in the LAKEWATCH program.
- **Latitude and Longitude:** Coordinates identifying the exact location of station 1 for each system.

Table 2. Base File Data.

County	Jefferson
Name	Wacissa-1
GNIS Number	292811
Water Body Type	River/Stream
Period of Record (years, range)	9 (1993 to 2004)
Latitude	30.3399
Longitude	-83.9911

## Long-Term Data for River/Streams: Definitions

The following long-term data are the primary trophic state parameters collected by LAKEWATCH volunteers and classification variables color and specific conductance (LAKEWATCH recently began analyzing samples quarterly for color and specific conductance):

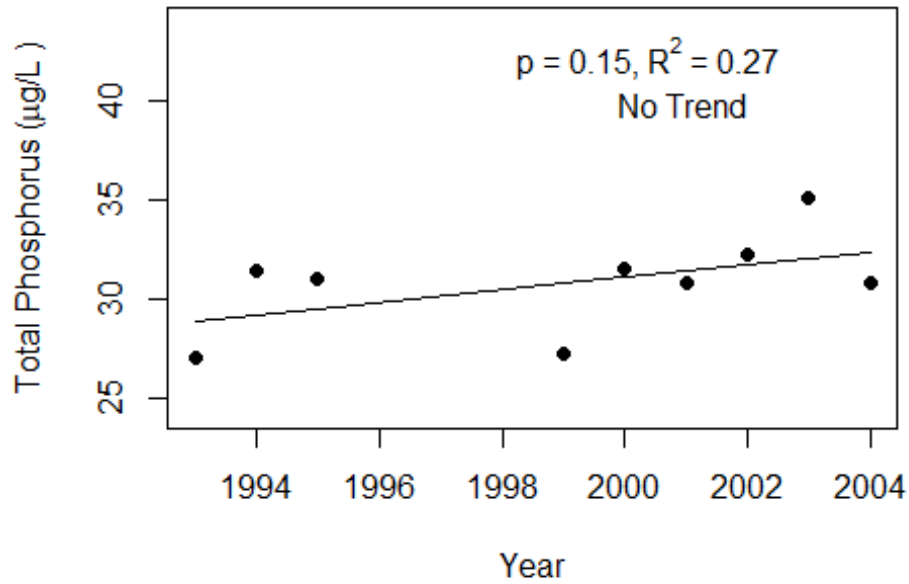
- **Total Phosphorus ( $\mu\text{g/L}$ ):** The nutrient most often limiting growth of plant/algae.
- **Total Nitrogen ( $\mu\text{g/L}$ ):** Another nutrient needed for aquatic plant/algae growth but only limiting when nitrogen to phosphorus ratios are generally less than 10.
- **Chlorophyll-uncorrected ( $\mu\text{g/L}$ ):** Chlorophyll concentrations are used to measure relative abundances of open water algal population.
- **Secchi (ft), Secchi (m):** Secchi measurements are estimates of water clarity.
- **Color (Pt-Co Units):** LAKEWATCH measures true color, which is the color of the water after particles have been filter out.
- **Specific Conductance ( $\mu\text{S/cm@25}^\circ\text{C}$ ):** Measurement of the ability of water to conduct electricity and can be used to estimate the amount of dissolved materials in water.

Table 3. Long-term trophic state data collected monthly by LAKEWATCH volunteers and color and specific conductance (collected quarterly).

Parameter	Minimum and Maximum Annual Geometric Means	Grand Geometric Mean (Sampling years)
Total Phosphorus ( $\mu\text{g/L}$ )	27 - 35	31 (9)
Total Nitrogen ( $\mu\text{g/L}$ )	296 - 433	373 (9)
Chlorophyll- uncorrected ( $\mu\text{g/L}$ )	1 - 2	1 (8)
Secchi (ft)	13.7 - 22	17.3 (2)
Secchi (m)	4.2 -6.7	6.7 (2)
Color (Pt-Co Units)	2 - 8	4 (4)
Specific Conductance ( $\mu\text{S/cm@25 C}$ )	-	(0)

Figure 2 and Figure 3. Trend plots of annual average total phosphorus and annual average total nitrogen versus year. The  $R^2$  value indicates the strength of the relations (ranges from 0.0 to 1.0; higher the  $R^2$  the stronger the relation) and the p value indicates if the relation is significant ( $p < 0.05$  is significant). Trend status are reported on the plots.

### Wacissa-1 (Jefferson)



### Wacissa-1 (Jefferson)

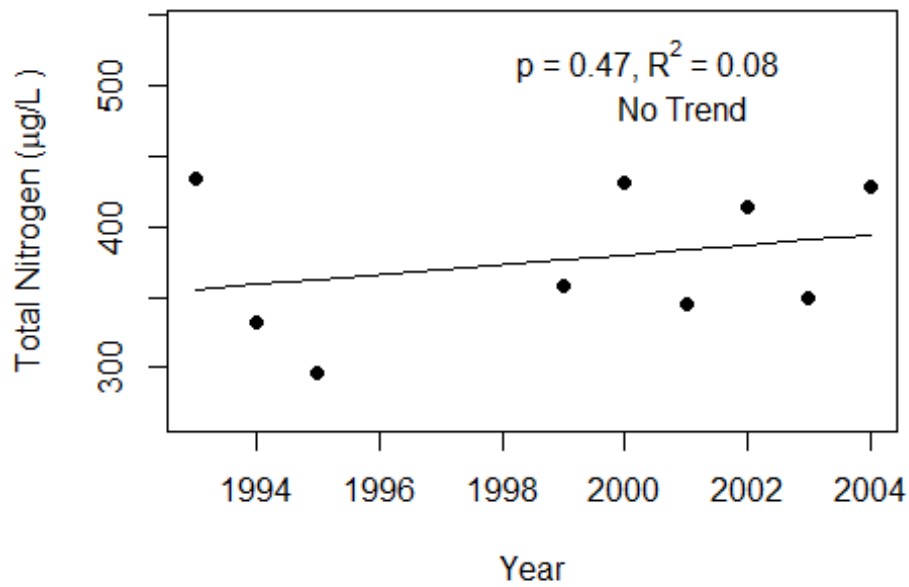
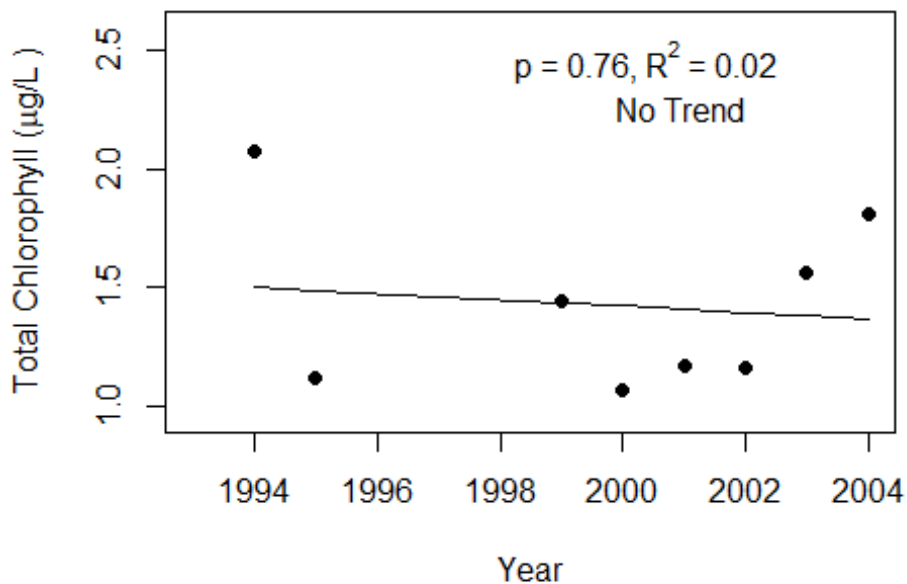
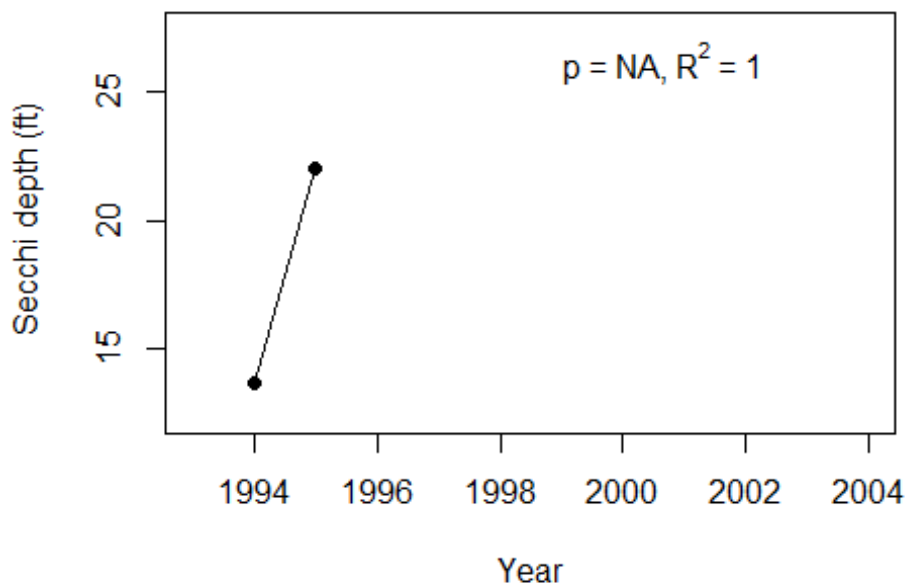


Figure 4 and Figure 5. Trend plots of annual average chlorophyll and annual average Secchi versus year. The  $R^2$  value indicates the strength of the relations (ranges from 0.0 to 1.0; higher the  $R^2$  the stronger the relations and the p value indicates if the relation is significant ( $p < 0.05$  is significant)). Trend status are reported on plots.

### Wacissa-1 (Jefferson)



### Wacissa-1 (Jefferson)





**LAKEWATCH Report for Wacissa-2 in Jefferson County**  
**Watershed Region: Panhandle East**  
**Using Data Downloaded 1/31/22**

**Introduction for River/Streams**

This report summarizes data collected on systems that have been part of the LAKEWATCH program. Data are from the period of record for individual systems. The first part of this summary lists background data for each system, the second part lists the long-term data geometric means and ranges and the final part are the trend plots for nutrients, chlorophyll, and Secchi depth. **Plots were only made for systems with five or more years of data.**

For decades Florida has had a narrative nutrient water quality criterion in place to protect Florida’s waters against nutrient over-enrichment. In 2009, the Florida Department of Environmental Protection (FDEP) initiated rulemaking and, by 2011, adopted what would be the first set of statewide numeric nutrient standards for Florida’s waters. By 2015, almost all the remaining waters in Florida have numeric nutrient standards (see for FDEP Regulation Nutrient Criteria’s for: Streams, spring vents:

<https://www.flrules.org/gateway/RuleNo.asp?title=SURFACE%20WATER%20QUALITY%20STANDARDS&ID=62-302.531>).



Figure 1. Map showing nutrient thresholds areas for streams set forth by FDEP.

Table 1. The nutrient thresholds for streams are listed in table below along with the map showing zones.

Nutrient Watershed Region	Total Phosphorus Nutrient Threshold <sup>1</sup>	Total Nitrogen Nutrient Threshold <sup>1</sup>
Panhandle West	60 µg/L	670 µg/L
Panhandle East	180 µg/L	1030 µg/L
North Central	300 µg/L	1870 µg/L
Peninsular	120 µg/L	1540 µg/L
West Central	490 µg/L	1650 µg/L
South Florida	No numeric nutrient threshold. The narrative criterion in paragraph 62-302.530(47)(b), F.A.C., applies.	No numeric nutrient threshold. The narrative criterion in paragraph 62-302.530(47)(b), F.A.C., applies.

<sup>1</sup>These values are annual geometric mean concentrations not to be exceeded more than once in any three calendar year periods.

## Base File Data for River/Streams: Definitions

- **County:** Name of county in which the system resides.
- **Name:** Stream name that LAKEWATCH uses for the system.
- **GNIS Number:** Number created by USGS's Geographic Names Information System.
- **Water Body Type:** Four different types of systems; lakes, estuaries, river/streams and springs.
- **Period of Record (years):** Number of years a system has been in the LAKEWATCH program.
- **Latitude and Longitude:** Coordinates identifying the exact location of station 1 for each system.

Table 2. Base File Data.

County	Jefferson
Name	Wacissa-2
GNIS Number	292811
Water Body Type	River/Stream
Period of Record (years, range)	9 (1993 to 2004)
Latitude	30.3061
Longitude	-83.9822

## Long-Term Data for River/Streams: Definitions

The following long-term data are the primary trophic state parameters collected by LAKEWATCH volunteers and classification variables color and specific conductance (LAKEWATCH recently began analyzing samples quarterly for color and specific conductance):

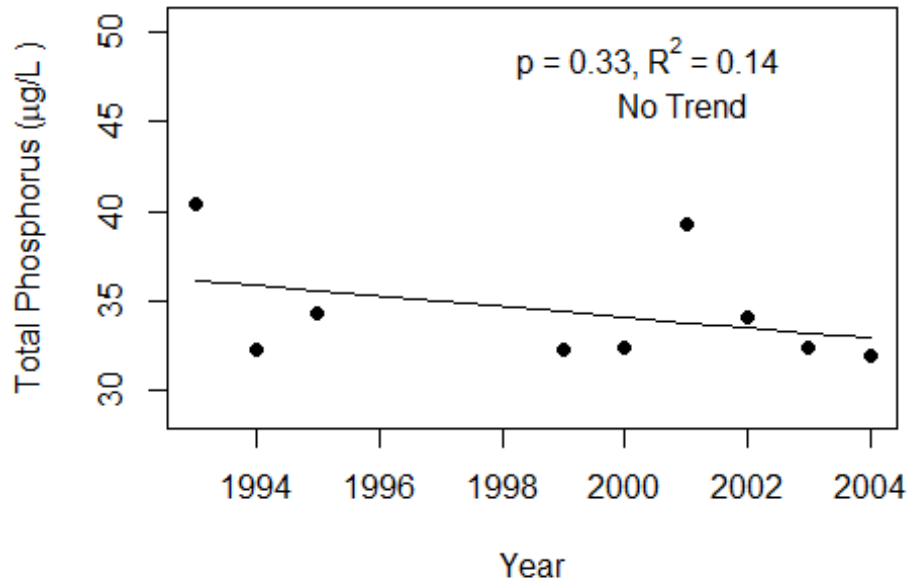
- **Total Phosphorus ( $\mu\text{g/L}$ ):** The nutrient most often limiting growth of plant/algae.
- **Total Nitrogen ( $\mu\text{g/L}$ ):** Another nutrient needed for aquatic plant/algae growth but only limiting when nitrogen to phosphorus ratios are generally less than 10.
- **Chlorophyll-uncorrected ( $\mu\text{g/L}$ ):** Chlorophyll concentrations are used to measure relative abundances of open water algal population.
- **Secchi (ft), Secchi (m):** Secchi measurements are estimates of water clarity.
- **Color (Pt-Co Units):** LAKEWATCH measures true color, which is the color of the water after particles have been filter out.
- **Specific Conductance ( $\mu\text{S/cm@25}^\circ\text{C}$ ):** Measurement of the ability of water to conduct electricity and can be used to estimate the amount of dissolved materials in water.

Table 3. Long-term trophic state data collected monthly by LAKEWATCH volunteers and color and specific conductance (collected quarterly).

Parameter	Minimum and Maximum Annual Geometric Means	Grand Geometric Mean (Sampling years)
Total Phosphorus ( $\mu\text{g/L}$ )	32 - 40	34 (9)
Total Nitrogen ( $\mu\text{g/L}$ )	125 - 349	221 (9)
Chlorophyll- uncorrected ( $\mu\text{g/L}$ )	1 - 3	2 (9)
Secchi (ft)	2 - 2	2 (1)
Secchi (m)	0.6 - 0.6	0.6 (1)
Color (Pt-Co Units)	4 - 10	6 (4)
Specific Conductance ( $\mu\text{S/cm@25 C}$ )	-	(0)

Figure 2 and Figure 3. Trend plots of annual average total phosphorus and annual average total nitrogen versus year. The  $R^2$  value indicates the strength of the relations (ranges from 0.0 to 1.0; higher the  $R^2$  the stronger the relation) and the p value indicates if the relation is significant ( $p < 0.05$  is significant). Trend status are reported on the plots.

### Wacissa-2 (Jefferson)



### Wacissa-2 (Jefferson)

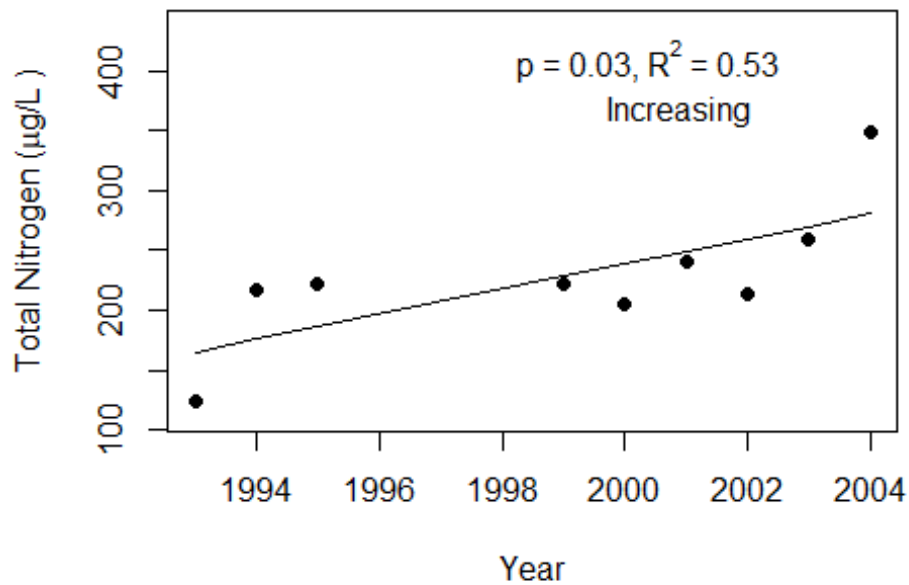
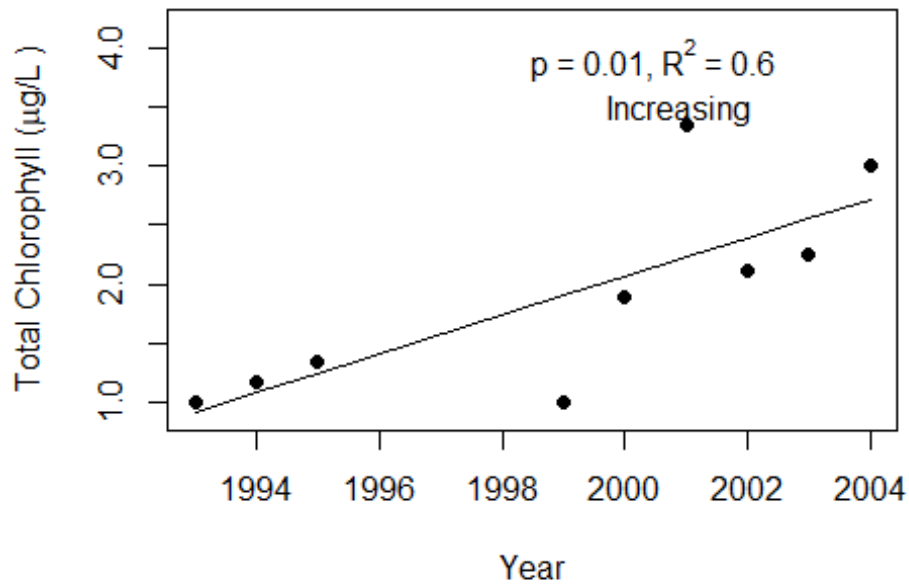
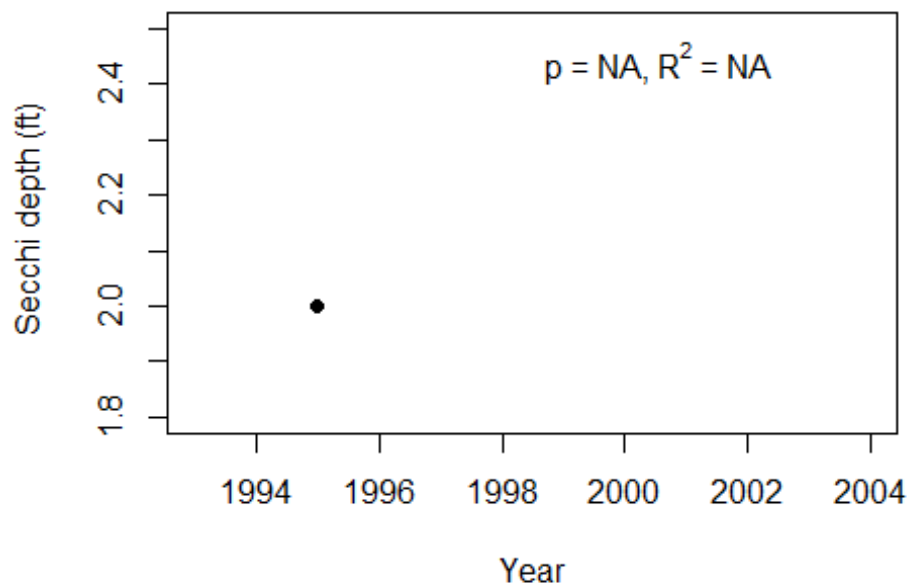


Figure 4 and Figure 5. Trend plots of annual average chlorophyll and annual average Secchi versus year. The  $R^2$  value indicates the strength of the relations (ranges from 0.0 to 1.0; higher the  $R^2$  the stronger the relations and the p value indicates if the relation is significant ( $p < 0.05$  is significant)). Trend status are reported on plots.

### Wacissa-2 (Jefferson)



### Wacissa-2 (Jefferson)



**LAKEWATCH Report for Wacissa-3 in Jefferson County**  
**Watershed Region: Panhandle East**  
**Using Data Downloaded 1/31/22**

**Introduction for River/Streams**

This report summarizes data collected on systems that have been part of the LAKEWATCH program. Data are from the period of record for individual systems. The first part of this summary lists background data for each system, the second part lists the long-term data geometric means and ranges and the final part are the trend plots for nutrients, chlorophyll, and Secchi depth. **Plots were only made for systems with five or more years of data.**

For decades Florida has had a narrative nutrient water quality criterion in place to protect Florida’s waters against nutrient over-enrichment. In 2009, the Florida Department of Environmental Protection (FDEP) initiated rulemaking and, by 2011, adopted what would be the first set of statewide numeric nutrient standards for Florida’s waters. By 2015, almost all the remaining waters in Florida have numeric nutrient standards (see for FDEP Regulation Nutrient Criteria’s for: Streams, spring vents:

<https://www.flrules.org/gateway/RuleNo.asp?title=SURFACE%20WATER%20QUALITY%20STANDARDS&ID=62-302.531>).



Figure 1. Map showing nutrient thresholds areas for streams set forth by FDEP.

Table 1. The nutrient thresholds for streams are listed in table below along with the map showing zones.

Nutrient Watershed Region	Total Phosphorus Nutrient Threshold <sup>1</sup>	Total Nitrogen Nutrient Threshold <sup>1</sup>
Panhandle West	60 µg/L	670 µg/L
Panhandle East	180 µg/L	1030 µg/L
North Central	300 µg/L	1870 µg/L
Peninsular	120 µg/L	1540 µg/L
West Central	490 µg/L	1650 µg/L
South Florida	No numeric nutrient threshold. The narrative criterion in paragraph 62-302.530(47)(b), F.A.C., applies.	No numeric nutrient threshold. The narrative criterion in paragraph 62-302.530(47)(b), F.A.C., applies.

<sup>1</sup>These values are annual geometric mean concentrations not to be exceeded more than once in any three calendar year periods.

## Base File Data for River/Streams: Definitions

- **County:** Name of county in which the system resides.
- **Name:** Stream name that LAKEWATCH uses for the system.
- **GNIS Number:** Number created by USGS's Geographic Names Information System.
- **Water Body Type:** Four different types of systems; lakes, estuaries, river/streams and springs.
- **Period of Record (years):** Number of years a system has been in the LAKEWATCH program.
- **Latitude and Longitude:** Coordinates identifying the exact location of station 1 for each system.

Table 2. Base File Data.

County	Jefferson
Name	Wacissa-3
GNIS Number	292811
Water Body Type	River/Stream
Period of Record (years, range)	9 (1993 to 2004)
Latitude	30.2031
Longitude	-83.9693

## Long-Term Data for River/Streams: Definitions

The following long-term data are the primary trophic state parameters collected by LAKEWATCH volunteers and classification variables color and specific conductance (LAKEWATCH recently began analyzing samples quarterly for color and specific conductance):

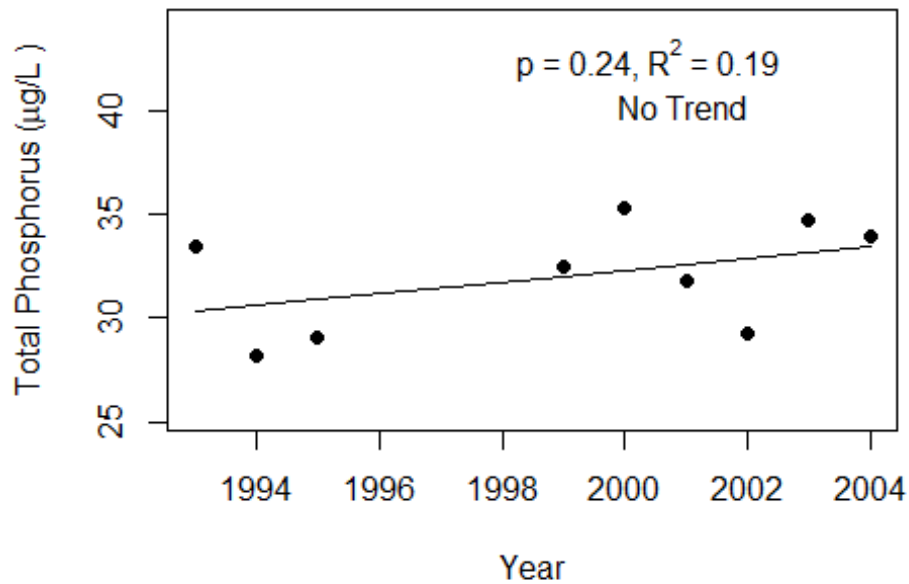
- **Total Phosphorus ( $\mu\text{g/L}$ ):** The nutrient most often limiting growth of plant/algae.
- **Total Nitrogen ( $\mu\text{g/L}$ ):** Another nutrient needed for aquatic plant/algae growth but only limiting when nitrogen to phosphorus ratios are generally less than 10.
- **Chlorophyll-uncorrected ( $\mu\text{g/L}$ ):** Chlorophyll concentrations are used to measure relative abundances of open water algal population.
- **Secchi (ft), Secchi (m):** Secchi measurements are estimates of water clarity.
- **Color (Pt-Co Units):** LAKEWATCH measures true color, which is the color of the water after particles have been filter out.
- **Specific Conductance ( $\mu\text{S/cm@25}^\circ\text{C}$ ):** Measurement of the ability of water to conduct electricity and can be used to estimate the amount of dissolved materials in water.

Table 3. Long-term trophic state data collected monthly by LAKEWATCH volunteers and color and specific conductance (collected quarterly).

Parameter	Minimum and Maximum Annual Geometric Means	Grand Geometric Mean (Sampling years)
Total Phosphorus ( $\mu\text{g/L}$ )	28 - 35	32 (9)
Total Nitrogen ( $\mu\text{g/L}$ )	138 - 364	215 (9)
Chlorophyll- uncorrected ( $\mu\text{g/L}$ )	1 - 3	2 (9)
Secchi (ft)	3 - 3	3 (1)
Secchi (m)	0.9 -0.9	0.9 (1)
Color (Pt-Co Units)	9 - 76	22 (4)
Specific Conductance ( $\mu\text{S/cm@25 C}$ )	-	(0)

Figure 2 and Figure 3. Trend plots of annual average total phosphorus and annual average total nitrogen versus year. The  $R^2$  value indicates the strength of the relations (ranges from 0.0 to 1.0; higher the  $R^2$  the stronger the relation) and the p value indicates if the relation is significant ( $p < 0.05$  is significant). Trend status are reported on the plots.

### Wacissa-3 (Jefferson)



### Wacissa-3 (Jefferson)

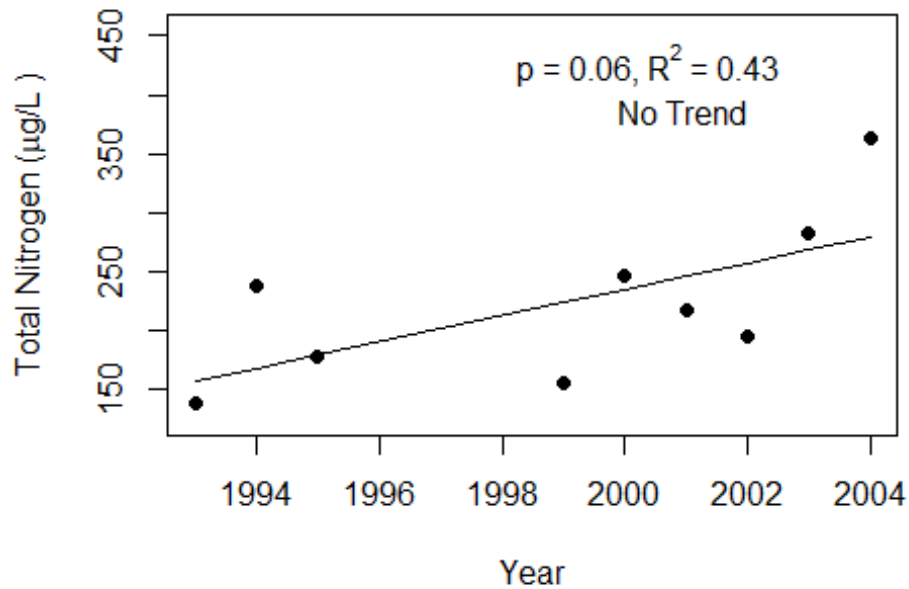
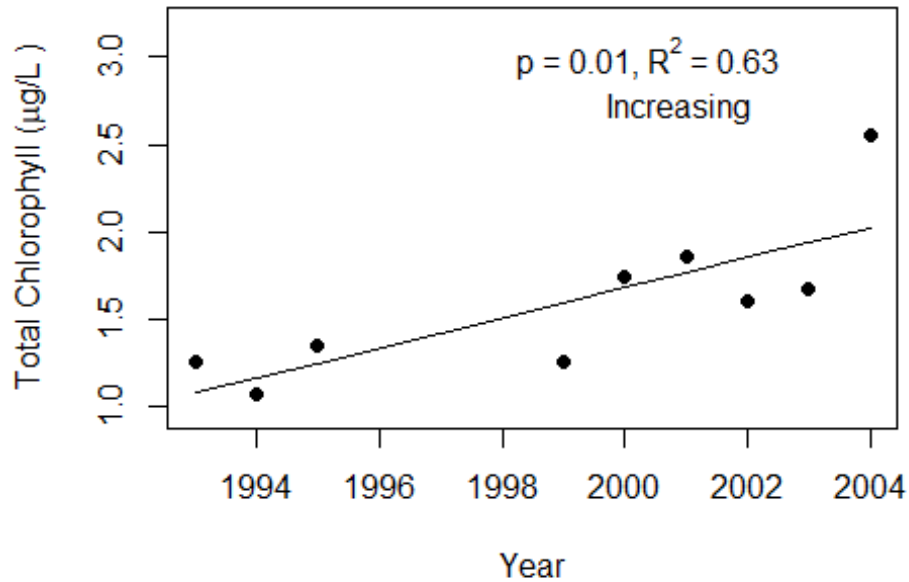
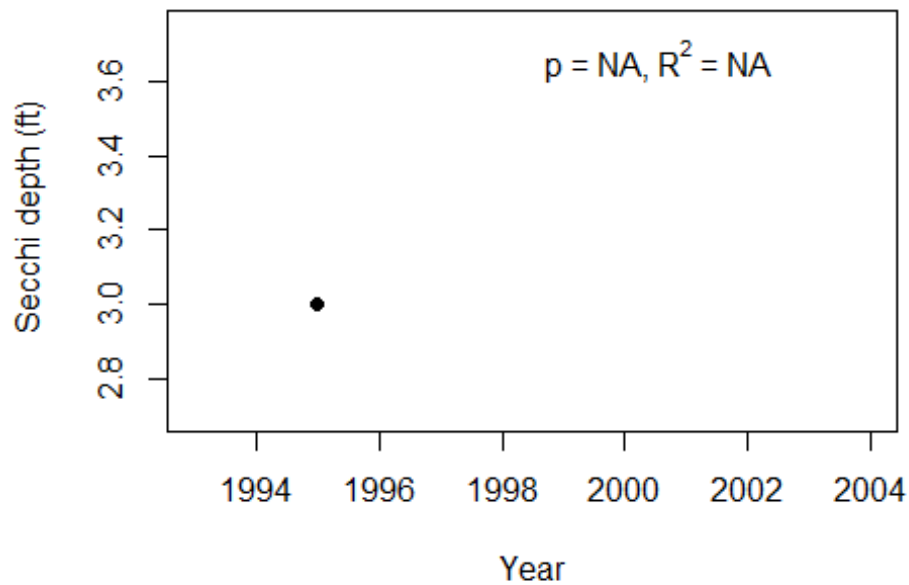


Figure 4 and Figure 5. Trend plots of annual average chlorophyll and annual average Secchi versus year. The  $R^2$  value indicates the strength of the relations (ranges from 0.0 to 1.0; higher the  $R^2$  the stronger the relations and the p value indicates if the relation is significant ( $p < 0.05$  is significant). Trend status are reported on plots.

### Wacissa-3 (Jefferson)



### Wacissa-3 (Jefferson)





**LAKEWATCH Report for Apk-Beau Canal-1 in Lake County**  
**Watershed Region:**  
**Using Data Downloaded 1/31/22**

**Introduction for River/Streams**

This report summarizes data collected on systems that have been part of the LAKEWATCH program. Data are from the period of record for individual systems. The first part of this summary lists background data for each system, the second part lists the long-term data geometric means and ranges and the final part are the trend plots for nutrients, chlorophyll, and Secchi depth. **Plots were only made for systems with five or more years of data.**

For decades Florida has had a narrative nutrient water quality criterion in place to protect Florida’s waters against nutrient over-enrichment. In 2009, the Florida Department of Environmental Protection (FDEP) initiated rulemaking and, by 2011, adopted what would be the first set of statewide numeric nutrient standards for Florida’s waters. By 2015, almost all the remaining waters in Florida have numeric nutrient standards (see for FDEP Regulation Nutrient Criteria’s for: Streams, spring vents: <https://www.flrules.org/gateway/RuleNo.asp?title=SURFACE%20WATER%20QUALITY%20STANDARDS&ID=62-302.531>).



Figure 1. Map showing nutrient thresholds areas for streams set forth by FDEP.

Table 1. The nutrient thresholds for streams are listed in table below along with the map showing zones.

Nutrient Watershed Region	Total Phosphorus Nutrient Threshold <sup>1</sup>	Total Nitrogen Nutrient Threshold <sup>1</sup>
Panhandle West	60 µg/L	670 µg/L
Panhandle East	180 µg/L	1030 µg/L
North Central	300 µ/L	1870 µg/L
Peninsular	120 µg/L	1540 µg/L
West Central	490 µg/L	1650 µg/L
South Florida	No numeric nutrient threshold. The narrative criterion in paragraph 62-302.530(47)(b), F.A.C., applies.	No numeric nutrient threshold. The narrative criterion in paragraph 62-302.530(47)(b), F.A.C., applies.

<sup>1</sup>These values are annual geometric mean concentrations not to be exceeded more than once in any three calendar year periods.

## Base File Data for River/Streams: Definitions

- **County:** Name of county in which the system resides.
- **Name:** Stream name that LAKEWATCH uses for the system.
- **GNIS Number:** Number created by USGS's Geographic Names Information System.
- **Water Body Type:** Four different types of systems; lakes, estuaries, river/streams and springs.
- **Period of Record (years):** Number of years a system has been in the LAKEWATCH program.
- **Latitude and Longitude:** Coordinates identifying the exact location of station 1 for each system.

Table 2. Base File Data.

County	Lake
Name	Apk-Beau Canal-1
GNIS Number	277922
Water Body Type	River/Stream
Period of Record (years, range)	3 (2010 to 2012)
Latitude	28.6806
Longitude	-81.6798

## Long-Term Data for River/Streams: Definitions

The following long-term data are the primary trophic state parameters collected by LAKEWATCH volunteers and classification variables color and specific conductance (LAKEWATCH recently began analyzing samples quarterly for color and specific conductance):

- **Total Phosphorus ( $\mu\text{g/L}$ ):** The nutrient most often limiting growth of plant/algae.
- **Total Nitrogen ( $\mu\text{g/L}$ ):** Another nutrient needed for aquatic plant/algae growth but only limiting when nitrogen to phosphorus ratios are generally less than 10.
- **Chlorophyll-uncorrected ( $\mu\text{g/L}$ ):** Chlorophyll concentrations are used to measure relative abundances of open water algal population.
- **Secchi (ft), Secchi (m):** Secchi measurements are estimates of water clarity.
- **Color (Pt-Co Units):** LAKEWATCH measures true color, which is the color of the water after particles have been filter out.
- **Specific Conductance ( $\mu\text{S/cm@25}^\circ\text{C}$ ):** Measurement of the ability of water to conduct electricity and can be used to estimate the amount of dissolved materials in water.

Table 3. Long-term trophic state data collected monthly by LAKEWATCH volunteers and color and specific conductance (collected quarterly).

Parameter	Minimum and Maximum Annual Geometric Means	Grand Geometric Mean (Sampling years)
Total Phosphorus ( $\mu\text{g/L}$ )	52 - 71	59 (3)
Total Nitrogen ( $\mu\text{g/L}$ )	2505 - 3560	2972 (3)
Chlorophyll- uncorrected ( $\mu\text{g/L}$ )	16 - 33	23 (3)
Secchi (ft)	1.9 - 3.7	2.7 (3)
Secchi (m)	0.6 - 1.1	1.1 (3)
Color (Pt-Co Units)	30 - 37	33 (3)
Specific Conductance ( $\mu\text{S/cm@25 C}$ )	406 - 518	458 (3)

**LAKEWATCH Report for Apk-Beau Canal-2 in Lake County**  
**Watershed Region:**  
**Using Data Downloaded 1/31/22**

**Introduction for River/Streams**

This report summarizes data collected on systems that have been part of the LAKEWATCH program. Data are from the period of record for individual systems. The first part of this summary lists background data for each system, the second part lists the long-term data geometric means and ranges and the final part are the trend plots for nutrients, chlorophyll, and Secchi depth. **Plots were only made for systems with five or more years of data.**

For decades Florida has had a narrative nutrient water quality criterion in place to protect Florida’s waters against nutrient over-enrichment. In 2009, the Florida Department of Environmental Protection (FDEP) initiated rulemaking and, by 2011, adopted what would be the first set of statewide numeric nutrient standards for Florida’s waters. By 2015, almost all the remaining waters in Florida have numeric nutrient standards (see for FDEP Regulation Nutrient Criteria’s for: Streams, spring vents: <https://www.flrules.org/gateway/RuleNo.asp?title=SURFACE%20WATER%20QUALITY%20STANDARDS&ID=62-302.531>).



Figure 1. Map showing nutrient thresholds areas for streams set forth by FDEP.

Table 1. The nutrient thresholds for streams are listed in table below along with the map showing zones.

Nutrient Watershed Region	Total Phosphorus Nutrient Threshold <sup>1</sup>	Total Nitrogen Nutrient Threshold <sup>1</sup>
Panhandle West	60 µg/L	670 µg/L
Panhandle East	180 µg/L	1030 µg/L
North Central	300 µ/L	1870 µg/L
Peninsular	120 µg/L	1540 µg/L
West Central	490 µg/L	1650 µg/L
South Florida	No numeric nutrient threshold. The narrative criterion in paragraph 62-302.530(47)(b), F.A.C., applies.	No numeric nutrient threshold. The narrative criterion in paragraph 62-302.530(47)(b), F.A.C., applies.

<sup>1</sup>These values are annual geometric mean concentrations not to be exceeded more than once in any three calendar year periods.

## Base File Data for River/Streams: Definitions

- **County:** Name of county in which the system resides.
- **Name:** Stream name that LAKEWATCH uses for the system.
- **GNIS Number:** Number created by USGS's Geographic Names Information System.
- **Water Body Type:** Four different types of systems; lakes, estuaries, river/streams and springs.
- **Period of Record (years):** Number of years a system has been in the LAKEWATCH program.
- **Latitude and Longitude:** Coordinates identifying the exact location of station 1 for each system.

Table 2. Base File Data.

County	Lake
Name	Apk-Beau Canal-2
GNIS Number	277922
Water Body Type	River/Stream
Period of Record (years, range)	3 (2010 to 2012)
Latitude	28.7197
Longitude	-81.6842

## Long-Term Data for River/Streams: Definitions

The following long-term data are the primary trophic state parameters collected by LAKEWATCH volunteers and classification variables color and specific conductance (LAKEWATCH recently began analyzing samples quarterly for color and specific conductance):

- **Total Phosphorus ( $\mu\text{g/L}$ ):** The nutrient most often limiting growth of plant/algae.
- **Total Nitrogen ( $\mu\text{g/L}$ ):** Another nutrient needed for aquatic plant/algae growth but only limiting when nitrogen to phosphorus ratios are generally less than 10.
- **Chlorophyll-uncorrected ( $\mu\text{g/L}$ ):** Chlorophyll concentrations are used to measure relative abundances of open water algal population.
- **Secchi (ft), Secchi (m):** Secchi measurements are estimates of water clarity.
- **Color (Pt-Co Units):** LAKEWATCH measures true color, which is the color of the water after particles have been filter out.
- **Specific Conductance ( $\mu\text{S/cm@25}^\circ\text{C}$ ):** Measurement of the ability of water to conduct electricity and can be used to estimate the amount of dissolved materials in water.

Table 3. Long-term trophic state data collected monthly by LAKEWATCH volunteers and color and specific conductance (collected quarterly).

Parameter	Minimum and Maximum Annual Geometric Means	Grand Geometric Mean (Sampling years)
Total Phosphorus ( $\mu\text{g/L}$ )	48 - 77	60 (3)
Total Nitrogen ( $\mu\text{g/L}$ )	2412 - 3367	2720 (3)
Chlorophyll- uncorrected ( $\mu\text{g/L}$ )	20 - 34	25 (3)
Secchi (ft)	2.5 - 3.5	3 (3)
Secchi (m)	0.8 - 1.1	1.1 (3)
Color (Pt-Co Units)	32 - 38	34 (3)
Specific Conductance ( $\mu\text{S/cm@25 C}$ )	425 - 532	474 (3)

**LAKEWATCH Report for Apk-Beau Canal-3 in Lake County**  
**Watershed Region:**  
**Using Data Downloaded 1/31/22**

**Introduction for River/Streams**

This report summarizes data collected on systems that have been part of the LAKEWATCH program. Data are from the period of record for individual systems. The first part of this summary lists background data for each system, the second part lists the long-term data geometric means and ranges and the final part are the trend plots for nutrients, chlorophyll, and Secchi depth. **Plots were only made for systems with five or more years of data.**

For decades Florida has had a narrative nutrient water quality criterion in place to protect Florida’s waters against nutrient over-enrichment. In 2009, the Florida Department of Environmental Protection (FDEP) initiated rulemaking and, by 2011, adopted what would be the first set of statewide numeric nutrient standards for Florida’s waters. By 2015, almost all the remaining waters in Florida have numeric nutrient standards (see for FDEP Regulation Nutrient Criteria’s for: Streams, spring vents: <https://www.flrules.org/gateway/RuleNo.asp?title=SURFACE%20WATER%20QUALITY%20STANDARDS&ID=62-302.531>).



Figure 1. Map showing nutrient thresholds areas for streams set forth by FDEP.

Table 1. The nutrient thresholds for streams are listed in table below along with the map showing zones.

Nutrient Watershed Region	Total Phosphorus Nutrient Threshold <sup>1</sup>	Total Nitrogen Nutrient Threshold <sup>1</sup>
Panhandle West	60 µg/L	670 µg/L
Panhandle East	180 µg/L	1030 µg/L
North Central	300 µ/L	1870 µg/L
Peninsular	120 µg/L	1540 µg/L
West Central	490 µg/L	1650 µg/L
South Florida	No numeric nutrient threshold. The narrative criterion in paragraph 62-302.530(47)(b), F.A.C., applies.	No numeric nutrient threshold. The narrative criterion in paragraph 62-302.530(47)(b), F.A.C., applies.

<sup>1</sup>These values are annual geometric mean concentrations not to be exceeded more than once in any three calendar year periods.

## Base File Data for River/Streams: Definitions

- **County:** Name of county in which the system resides.
- **Name:** Stream name that LAKEWATCH uses for the system.
- **GNIS Number:** Number created by USGS's Geographic Names Information System.
- **Water Body Type:** Four different types of systems; lakes, estuaries, river/streams and springs.
- **Period of Record (years):** Number of years a system has been in the LAKEWATCH program.
- **Latitude and Longitude:** Coordinates identifying the exact location of station 1 for each system.

Table 2. Base File Data.

County	Lake
Name	Apk-Beau Canal-3
GNIS Number	277922
Water Body Type	River/Stream
Period of Record (years, range)	3 (2010 to 2012)
Latitude	28.7242
Longitude	-81.6848

## Long-Term Data for River/Streams: Definitions

The following long-term data are the primary trophic state parameters collected by LAKEWATCH volunteers and classification variables color and specific conductance (LAKEWATCH recently began analyzing samples quarterly for color and specific conductance):

- **Total Phosphorus ( $\mu\text{g/L}$ ):** The nutrient most often limiting growth of plant/algae.
- **Total Nitrogen ( $\mu\text{g/L}$ ):** Another nutrient needed for aquatic plant/algae growth but only limiting when nitrogen to phosphorus ratios are generally less than 10.
- **Chlorophyll-uncorrected ( $\mu\text{g/L}$ ):** Chlorophyll concentrations are used to measure relative abundances of open water algal population.
- **Secchi (ft), Secchi (m):** Secchi measurements are estimates of water clarity.
- **Color (Pt-Co Units):** LAKEWATCH measures true color, which is the color of the water after particles have been filter out.
- **Specific Conductance ( $\mu\text{S/cm@25}^\circ\text{C}$ ):** Measurement of the ability of water to conduct electricity and can be used to estimate the amount of dissolved materials in water.

Table 3. Long-term trophic state data collected monthly by LAKEWATCH volunteers and color and specific conductance (collected quarterly).

Parameter	Minimum and Maximum Annual Geometric Means	Grand Geometric Mean (Sampling years)
Total Phosphorus ( $\mu\text{g/L}$ )	23 - 44	31 (3)
Total Nitrogen ( $\mu\text{g/L}$ )	1709 - 2233	1976 (3)
Chlorophyll- uncorrected ( $\mu\text{g/L}$ )	5 - 13	9 (3)
Secchi (ft)	2.2 - 2.8	2.5 (2)
Secchi (m)	0.7 -0.9	0.9 (2)
Color (Pt-Co Units)	8 - 19	14 (3)
Specific Conductance ( $\mu\text{S/cm@25 C}$ )	435 - 562	484 (3)

**LAKEWATCH Report for Apk-Beau Canal-4 in Lake County**  
**Watershed Region:**  
**Using Data Downloaded 1/31/22**

**Introduction for River/Streams**

This report summarizes data collected on systems that have been part of the LAKEWATCH program. Data are from the period of record for individual systems. The first part of this summary lists background data for each system, the second part lists the long-term data geometric means and ranges and the final part are the trend plots for nutrients, chlorophyll, and Secchi depth. **Plots were only made for systems with five or more years of data.**

For decades Florida has had a narrative nutrient water quality criterion in place to protect Florida’s waters against nutrient over-enrichment. In 2009, the Florida Department of Environmental Protection (FDEP) initiated rulemaking and, by 2011, adopted what would be the first set of statewide numeric nutrient standards for Florida’s waters. By 2015, almost all the remaining waters in Florida have numeric nutrient standards (see for FDEP Regulation Nutrient Criteria’s for: Streams, spring vents: <https://www.flrules.org/gateway/RuleNo.asp?title=SURFACE%20WATER%20QUALITY%20STANDARDS&ID=62-302.531>).



Figure 1. Map showing nutrient thresholds areas for streams set forth by FDEP.

Table 1. The nutrient thresholds for streams are listed in table below along with the map showing zones.

Nutrient Watershed Region	Total Phosphorus Nutrient Threshold <sup>1</sup>	Total Nitrogen Nutrient Threshold <sup>1</sup>
Panhandle West	60 µg/L	670 µg/L
Panhandle East	180 µg/L	1030 µg/L
North Central	300 µ/L	1870 µg/L
Peninsular	120 µg/L	1540 µg/L
West Central	490 µg/L	1650 µg/L
South Florida	No numeric nutrient threshold. The narrative criterion in paragraph 62-302.530(47)(b), F.A.C., applies.	No numeric nutrient threshold. The narrative criterion in paragraph 62-302.530(47)(b), F.A.C., applies.

<sup>1</sup>These values are annual geometric mean concentrations not to be exceeded more than once in any three calendar year periods.

## Base File Data for River/Streams: Definitions

- **County:** Name of county in which the system resides.
- **Name:** Stream name that LAKEWATCH uses for the system.
- **GNIS Number:** Number created by USGS's Geographic Names Information System.
- **Water Body Type:** Four different types of systems; lakes, estuaries, river/streams and springs.
- **Period of Record (years):** Number of years a system has been in the LAKEWATCH program.
- **Latitude and Longitude:** Coordinates identifying the exact location of station 1 for each system.

Table 2. Base File Data.

County	Lake
Name	Apk-Beau Canal-4
GNIS Number	277922
Water Body Type	River/Stream
Period of Record (years, range)	1 (2018 to 2018)
Latitude	28.7529
Longitude	-81.6862

## Long-Term Data for River/Streams: Definitions

The following long-term data are the primary trophic state parameters collected by LAKEWATCH volunteers and classification variables color and specific conductance (LAKEWATCH recently began analyzing samples quarterly for color and specific conductance):

- **Total Phosphorus ( $\mu\text{g/L}$ ):** The nutrient most often limiting growth of plant/algae.
- **Total Nitrogen ( $\mu\text{g/L}$ ):** Another nutrient needed for aquatic plant/algae growth but only limiting when nitrogen to phosphorus ratios are generally less than 10.
- **Chlorophyll-uncorrected ( $\mu\text{g/L}$ ):** Chlorophyll concentrations are used to measure relative abundances of open water algal population.
- **Secchi (ft), Secchi (m):** Secchi measurements are estimates of water clarity.
- **Color (Pt-Co Units):** LAKEWATCH measures true color, which is the color of the water after particles have been filter out.
- **Specific Conductance ( $\mu\text{S/cm@25}^\circ\text{C}$ ):** Measurement of the ability of water to conduct electricity and can be used to estimate the amount of dissolved materials in water.

Table 3. Long-term trophic state data collected monthly by LAKEWATCH volunteers and color and specific conductance (collected quarterly).

Parameter	Minimum and Maximum Annual Geometric Means	Grand Geometric Mean (Sampling years)
Total Phosphorus ( $\mu\text{g/L}$ )	30 - 30	30 (1)
Total Nitrogen ( $\mu\text{g/L}$ )	1400 - 1400	1400 (1)
Chlorophyll- uncorrected ( $\mu\text{g/L}$ )	15 - 15	15 (1)
Secchi (ft)	4 - 4	4 (1)
Secchi (m)	1.2 -1.2	1.2 (1)
Color (Pt-Co Units)	-	(0)
Specific Conductance ( $\mu\text{S/cm@25 C}$ )	-	(0)



**LAKEWATCH Report for Apk-Beau Canal-5 in Lake County**  
**Watershed Region:**  
**Using Data Downloaded 1/31/22**

**Introduction for River/Streams**

This report summarizes data collected on systems that have been part of the LAKEWATCH program. Data are from the period of record for individual systems. The first part of this summary lists background data for each system, the second part lists the long-term data geometric means and ranges and the final part are the trend plots for nutrients, chlorophyll, and Secchi depth. **Plots were only made for systems with five or more years of data.**

For decades Florida has had a narrative nutrient water quality criterion in place to protect Florida’s waters against nutrient over-enrichment. In 2009, the Florida Department of Environmental Protection (FDEP) initiated rulemaking and, by 2011, adopted what would be the first set of statewide numeric nutrient standards for Florida’s waters. By 2015, almost all the remaining waters in Florida have numeric nutrient standards (see for FDEP Regulation Nutrient Criteria’s for: Streams, spring vents: <https://www.flrules.org/gateway/RuleNo.asp?title=SURFACE%20WATER%20QUALITY%20STANDARDS&ID=62-302.531>).



Figure 1. Map showing nutrient thresholds areas for streams set forth by FDEP.

Table 1. The nutrient thresholds for streams are listed in table below along with the map showing zones.

Nutrient Watershed Region	Total Phosphorus Nutrient Threshold <sup>1</sup>	Total Nitrogen Nutrient Threshold <sup>1</sup>
Panhandle West	60 µg/L	670 µg/L
Panhandle East	180 µg/L	1030 µg/L
North Central	300 µ/L	1870 µg/L
Peninsular	120 µg/L	1540 µg/L
West Central	490 µg/L	1650 µg/L
South Florida	No numeric nutrient threshold. The narrative criterion in paragraph 62-302.530(47)(b), F.A.C., applies.	No numeric nutrient threshold. The narrative criterion in paragraph 62-302.530(47)(b), F.A.C., applies.

<sup>1</sup>These values are annual geometric mean concentrations not to be exceeded more than once in any three calendar year periods.

## Base File Data for River/Streams: Definitions

- **County:** Name of county in which the system resides.
- **Name:** Stream name that LAKEWATCH uses for the system.
- **GNIS Number:** Number created by USGS's Geographic Names Information System.
- **Water Body Type:** Four different types of systems; lakes, estuaries, river/streams and springs.
- **Period of Record (years):** Number of years a system has been in the LAKEWATCH program.
- **Latitude and Longitude:** Coordinates identifying the exact location of station 1 for each system.

Table 2. Base File Data.

County	Lake
Name	Apk-Beau Canal-5
GNIS Number	277922
Water Body Type	River/Stream
Period of Record (years, range)	1 (2018 to 2018)
Latitude	28.7547
Longitude	-81.6838

## Long-Term Data for River/Streams: Definitions

The following long-term data are the primary trophic state parameters collected by LAKEWATCH volunteers and classification variables color and specific conductance (LAKEWATCH recently began analyzing samples quarterly for color and specific conductance):

- **Total Phosphorus ( $\mu\text{g/L}$ ):** The nutrient most often limiting growth of plant/algae.
- **Total Nitrogen ( $\mu\text{g/L}$ ):** Another nutrient needed for aquatic plant/algae growth but only limiting when nitrogen to phosphorus ratios are generally less than 10.
- **Chlorophyll-uncorrected ( $\mu\text{g/L}$ ):** Chlorophyll concentrations are used to measure relative abundances of open water algal population.
- **Secchi (ft), Secchi (m):** Secchi measurements are estimates of water clarity.
- **Color (Pt-Co Units):** LAKEWATCH measures true color, which is the color of the water after particles have been filter out.
- **Specific Conductance ( $\mu\text{S/cm@25}^\circ\text{C}$ ):** Measurement of the ability of water to conduct electricity and can be used to estimate the amount of dissolved materials in water.

Table 3. Long-term trophic state data collected monthly by LAKEWATCH volunteers and color and specific conductance (collected quarterly).

Parameter	Minimum and Maximum Annual Geometric Means	Grand Geometric Mean (Sampling years)
Total Phosphorus ( $\mu\text{g/L}$ )	26 - 26	26 (1)
Total Nitrogen ( $\mu\text{g/L}$ )	1430 - 1430	1430 (1)
Chlorophyll- uncorrected ( $\mu\text{g/L}$ )	11 - 11	11 (1)
Secchi (ft)	4 - 4	4 (1)
Secchi (m)	1.2 -1.2	1.2 (1)
Color (Pt-Co Units)	-	(0)
Specific Conductance ( $\mu\text{S/cm@25 C}$ )	-	(0)

**LAKEWATCH Report for Apk-Beau Canal-6 in Lake County**  
**Watershed Region:**  
**Using Data Downloaded 1/31/22**

**Introduction for River/Streams**

This report summarizes data collected on systems that have been part of the LAKEWATCH program. Data are from the period of record for individual systems. The first part of this summary lists background data for each system, the second part lists the long-term data geometric means and ranges and the final part are the trend plots for nutrients, chlorophyll, and Secchi depth. **Plots were only made for systems with five or more years of data.**

For decades Florida has had a narrative nutrient water quality criterion in place to protect Florida’s waters against nutrient over-enrichment. In 2009, the Florida Department of Environmental Protection (FDEP) initiated rulemaking and, by 2011, adopted what would be the first set of statewide numeric nutrient standards for Florida’s waters. By 2015, almost all the remaining waters in Florida have numeric nutrient standards (see for FDEP Regulation Nutrient Criteria’s for: Streams, spring vents: <https://www.flrules.org/gateway/RuleNo.asp?title=SURFACE%20WATER%20QUALITY%20STANDARDS&ID=62-302.531>).



Figure 1. Map showing nutrient thresholds areas for streams set forth by FDEP.

Table 1. The nutrient thresholds for streams are listed in table below along with the map showing zones.

Nutrient Watershed Region	Total Phosphorus Nutrient Threshold <sup>1</sup>	Total Nitrogen Nutrient Threshold <sup>1</sup>
Panhandle West	60 µg/L	670 µg/L
Panhandle East	180 µg/L	1030 µg/L
North Central	300 µg/L	1870 µg/L
Peninsular	120 µg/L	1540 µg/L
West Central	490 µg/L	1650 µg/L
South Florida	No numeric nutrient threshold. The narrative criterion in paragraph 62-302.530(47)(b), F.A.C., applies.	No numeric nutrient threshold. The narrative criterion in paragraph 62-302.530(47)(b), F.A.C., applies.

<sup>1</sup>These values are annual geometric mean concentrations not to be exceeded more than once in any three calendar year periods.

## Base File Data for River/Streams: Definitions

- **County:** Name of county in which the system resides.
- **Name:** Stream name that LAKEWATCH uses for the system.
- **GNIS Number:** Number created by USGS's Geographic Names Information System.
- **Water Body Type:** Four different types of systems; lakes, estuaries, river/streams and springs.
- **Period of Record (years):** Number of years a system has been in the LAKEWATCH program.
- **Latitude and Longitude:** Coordinates identifying the exact location of station 1 for each system.

Table 2. Base File Data.

County	Lake
Name	Apk-Beau Canal-6
GNIS Number	277922
Water Body Type	River/Stream
Period of Record (years, range)	1 (2018 to 2018)
Latitude	28.766
Longitude	-81.6759

## Long-Term Data for River/Streams: Definitions

The following long-term data are the primary trophic state parameters collected by LAKEWATCH volunteers and classification variables color and specific conductance (LAKEWATCH recently began analyzing samples quarterly for color and specific conductance):

- **Total Phosphorus ( $\mu\text{g/L}$ ):** The nutrient most often limiting growth of plant/algae.
- **Total Nitrogen ( $\mu\text{g/L}$ ):** Another nutrient needed for aquatic plant/algae growth but only limiting when nitrogen to phosphorus ratios are generally less than 10.
- **Chlorophyll-uncorrected ( $\mu\text{g/L}$ ):** Chlorophyll concentrations are used to measure relative abundances of open water algal population.
- **Secchi (ft), Secchi (m):** Secchi measurements are estimates of water clarity.
- **Color (Pt-Co Units):** LAKEWATCH measures true color, which is the color of the water after particles have been filter out.
- **Specific Conductance ( $\mu\text{S/cm@25}^\circ\text{C}$ ):** Measurement of the ability of water to conduct electricity and can be used to estimate the amount of dissolved materials in water.

Table 3. Long-term trophic state data collected monthly by LAKEWATCH volunteers and color and specific conductance (collected quarterly).

Parameter	Minimum and Maximum Annual Geometric Means	Grand Geometric Mean (Sampling years)
Total Phosphorus ( $\mu\text{g/L}$ )	40 - 40	40 (1)
Total Nitrogen ( $\mu\text{g/L}$ )	1410 - 1410	1410 (1)
Chlorophyll- uncorrected ( $\mu\text{g/L}$ )	10 - 10	10 (1)
Secchi (ft)	4 - 4	4 (1)
Secchi (m)	1.2 -1.2	1.2 (1)
Color (Pt-Co Units)	-	(0)
Specific Conductance ( $\mu\text{S/cm@25 C}$ )	-	(0)

**LAKEWATCH Report for Dead River-1 in Lake County**  
**Watershed Region: Peninsular**  
**Using Data Downloaded 1/31/22**

**Introduction for River/Streams**

This report summarizes data collected on systems that have been part of the LAKEWATCH program. Data are from the period of record for individual systems. The first part of this summary lists background data for each system, the second part lists the long-term data geometric means and ranges and the final part are the trend plots for nutrients, chlorophyll, and Secchi depth. **Plots were only made for systems with five or more years of data.**

For decades Florida has had a narrative nutrient water quality criterion in place to protect Florida’s waters against nutrient over-enrichment. In 2009, the Florida Department of Environmental Protection (FDEP) initiated rulemaking and, by 2011, adopted what would be the first set of statewide numeric nutrient standards for Florida’s waters. By 2015, almost all the remaining waters in Florida have numeric nutrient standards (see for FDEP Regulation Nutrient Criteria’s for: Streams, spring vents:

<https://www.flrules.org/gateway/RuleNo.asp?title=SURFACE%20WATER%20QUALITY%20STANDARDS&ID=62-302.531>).



Figure 1. Map showing nutrient thresholds areas for streams set forth by FDEP.

Table 1. The nutrient thresholds for streams are listed in table below along with the map showing zones.

Nutrient Watershed Region	Total Phosphorus Nutrient Threshold <sup>1</sup>	Total Nitrogen Nutrient Threshold <sup>1</sup>
Panhandle West	60 µg/L	670 µg/L
Panhandle East	180 µg/L	1030 µg/L
North Central	300 µg/L	1870 µg/L
Peninsular	120 µg/L	1540 µg/L
West Central	490 µg/L	1650 µg/L
South Florida	No numeric nutrient threshold. The narrative criterion in paragraph 62-302.530(47)(b), F.A.C., applies.	No numeric nutrient threshold. The narrative criterion in paragraph 62-302.530(47)(b), F.A.C., applies.

<sup>1</sup>These values are annual geometric mean concentrations not to be exceeded more than once in any three calendar year periods.

## Base File Data for River/Streams: Definitions

- **County:** Name of county in which the system resides.
- **Name:** Stream name that LAKEWATCH uses for the system.
- **GNIS Number:** Number created by USGS's Geographic Names Information System.
- **Water Body Type:** Four different types of systems; lakes, estuaries, river/streams and springs.
- **Period of Record (years):** Number of years a system has been in the LAKEWATCH program.
- **Latitude and Longitude:** Coordinates identifying the exact location of station 1 for each system.

Table 2. Base File Data.

County	Lake
Name	Dead River-1
GNIS Number	281384
Water Body Type	River/Stream
Period of Record (years, range)	19 (2003 to 2021)
Latitude	28.8126
Longitude	-81.7701

## Long-Term Data for River/Streams: Definitions

The following long-term data are the primary trophic state parameters collected by LAKEWATCH volunteers and classification variables color and specific conductance (LAKEWATCH recently began analyzing samples quarterly for color and specific conductance):

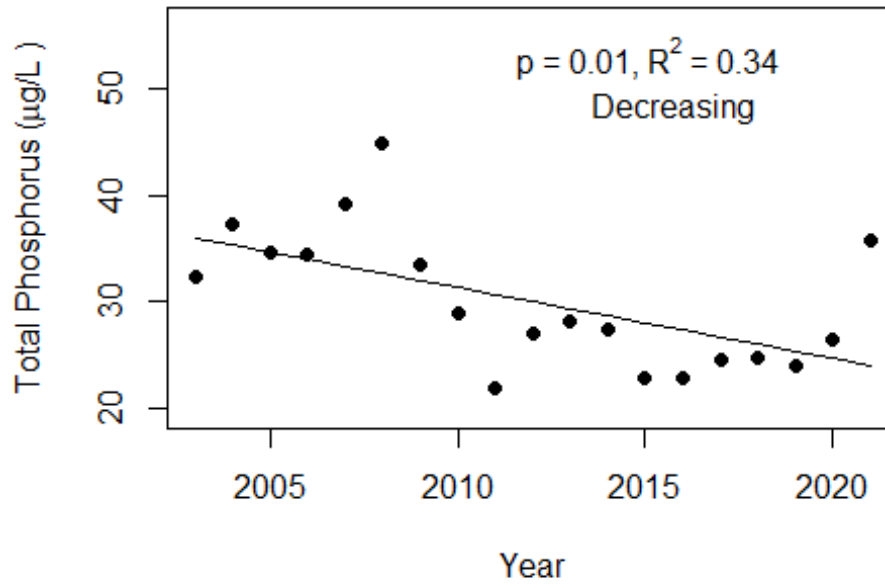
- **Total Phosphorus ( $\mu\text{g/L}$ ):** The nutrient most often limiting growth of plant/algae.
- **Total Nitrogen ( $\mu\text{g/L}$ ):** Another nutrient needed for aquatic plant/algae growth but only limiting when nitrogen to phosphorus ratios are generally less than 10.
- **Chlorophyll-uncorrected ( $\mu\text{g/L}$ ):** Chlorophyll concentrations are used to measure relative abundances of open water algal population.
- **Secchi (ft), Secchi (m):** Secchi measurements are estimates of water clarity.
- **Color (Pt-Co Units):** LAKEWATCH measures true color, which is the color of the water after particles have been filter out.
- **Specific Conductance ( $\mu\text{S/cm@25}^\circ\text{C}$ ):** Measurement of the ability of water to conduct electricity and can be used to estimate the amount of dissolved materials in water.

Table 3. Long-term trophic state data collected monthly by LAKEWATCH volunteers and color and specific conductance (collected quarterly).

Parameter	Minimum and Maximum Annual Geometric Means	Grand Geometric Mean (Sampling years)
Total Phosphorus ( $\mu\text{g/L}$ )	22 - 45	29 (19)
Total Nitrogen ( $\mu\text{g/L}$ )	1219 - 2048	1515 (19)
Chlorophyll- uncorrected ( $\mu\text{g/L}$ )	16 - 69	30 (19)
Secchi (ft)	1.5 - 3.5	2.5 (19)
Secchi (m)	0.4 - 1.1	1.1 (19)
Color (Pt-Co Units)	9 - 454	21 (16)
Specific Conductance ( $\mu\text{S/cm@25 C}$ )	192 - 305	246 (13)

Figure 2 and Figure 3. Trend plots of annual average total phosphorus and annual average total nitrogen versus year. The  $R^2$  value indicates the strength of the relations (ranges from 0.0 to 1.0; higher the  $R^2$  the stronger the relation) and the p value indicates if the relation is significant ( $p < 0.05$  is significant). Trend status are reported on the plots.

### Dead River-1 (Lake)



### Dead River-1 (Lake)

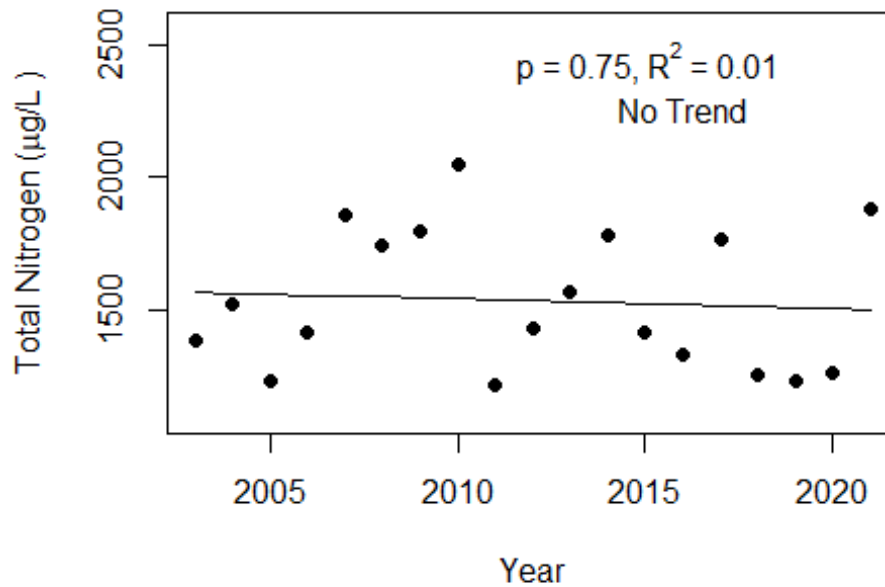
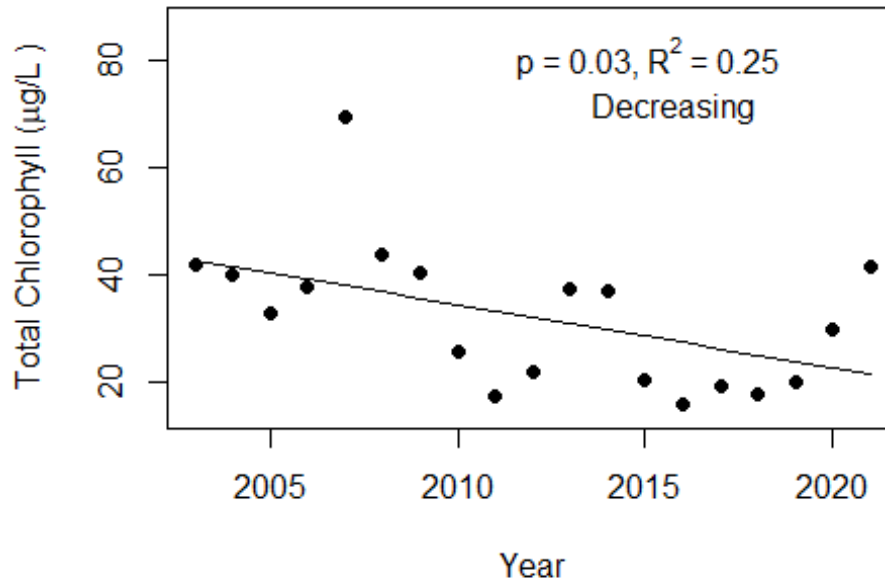
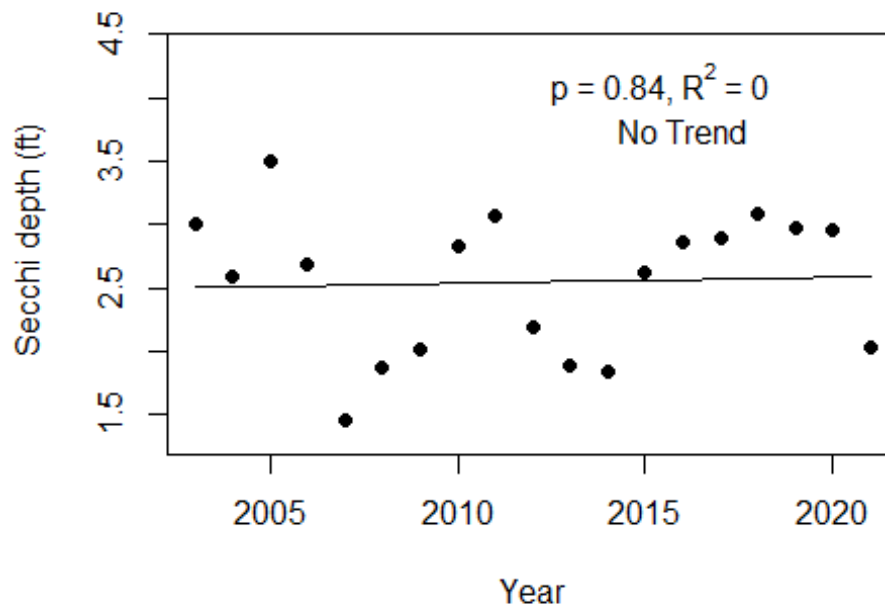


Figure 4 and Figure 5. Trend plots of annual average chlorophyll and annual average Secchi versus year. The  $R^2$  value indicates the strength of the relations (ranges from 0.0 to 1.0; higher the  $R^2$  the stronger the relations and the p value indicates if the relation is significant ( $p < 0.05$  is significant)). Trend status are reported on plots.

### Dead River-1 (Lake)



### Dead River-1 (Lake)





**LAKEWATCH Report for Dead River-2 in Lake County**  
**Watershed Region: Peninsular**  
**Using Data Downloaded 1/31/22**

**Introduction for River/Streams**

This report summarizes data collected on systems that have been part of the LAKEWATCH program. Data are from the period of record for individual systems. The first part of this summary lists background data for each system, the second part lists the long-term data geometric means and ranges and the final part are the trend plots for nutrients, chlorophyll, and Secchi depth. **Plots were only made for systems with five or more years of data.**

For decades Florida has had a narrative nutrient water quality criterion in place to protect Florida’s waters against nutrient over-enrichment. In 2009, the Florida Department of Environmental Protection (FDEP) initiated rulemaking and, by 2011, adopted what would be the first set of statewide numeric nutrient standards for Florida’s waters. By 2015, almost all the remaining waters in Florida have numeric nutrient standards (see for FDEP Regulation Nutrient Criteria’s for: Streams, spring vents: <https://www.flrules.org/gateway/RuleNo.asp?title=SURFACE%20WATER%20QUALITY%20STANDARDS&ID=62-302.531>).



Figure 1. Map showing nutrient thresholds areas for streams set forth by FDEP.

Table 1. The nutrient thresholds for streams are listed in table below along with the map showing zones.

Nutrient Watershed Region	Total Phosphorus Nutrient Threshold <sup>1</sup>	Total Nitrogen Nutrient Threshold <sup>1</sup>
Panhandle West	60 µg/L	670 µg/L
Panhandle East	180 µg/L	1030 µg/L
North Central	300 µ/L	1870 µg/L
Peninsular	120 µg/L	1540 µg/L
West Central	490 µg/L	1650 µg/L
South Florida	No numeric nutrient threshold. The narrative criterion in paragraph 62-302.530(47)(b), F.A.C., applies.	No numeric nutrient threshold. The narrative criterion in paragraph 62-302.530(47)(b), F.A.C., applies.

<sup>1</sup>These values are annual geometric mean concentrations not to be exceeded more than once in any three calendar year periods.

## Base File Data for River/Streams: Definitions

- **County:** Name of county in which the system resides.
- **Name:** Stream name that LAKEWATCH uses for the system.
- **GNIS Number:** Number created by USGS's Geographic Names Information System.
- **Water Body Type:** Four different types of systems; lakes, estuaries, river/streams and springs.
- **Period of Record (years):** Number of years a system has been in the LAKEWATCH program.
- **Latitude and Longitude:** Coordinates identifying the exact location of station 1 for each system.

Table 2. Base File Data.

County	Lake
Name	Dead River-2
GNIS Number	281384
Water Body Type	River/Stream
Period of Record (years, range)	19 (2003 to 2021)
Latitude	28.8133
Longitude	-81.7644

## Long-Term Data for River/Streams: Definitions

The following long-term data are the primary trophic state parameters collected by LAKEWATCH volunteers and classification variables color and specific conductance (LAKEWATCH recently began analyzing samples quarterly for color and specific conductance):

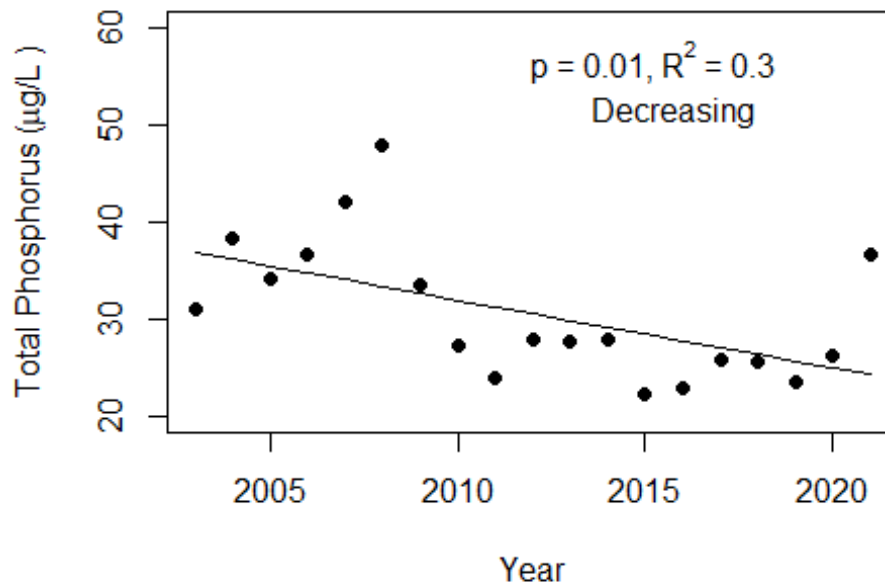
- **Total Phosphorus ( $\mu\text{g/L}$ ):** The nutrient most often limiting growth of plant/algae.
- **Total Nitrogen ( $\mu\text{g/L}$ ):** Another nutrient needed for aquatic plant/algae growth but only limiting when nitrogen to phosphorus ratios are generally less than 10.
- **Chlorophyll-uncorrected ( $\mu\text{g/L}$ ):** Chlorophyll concentrations are used to measure relative abundances of open water algal population.
- **Secchi (ft), Secchi (m):** Secchi measurements are estimates of water clarity.
- **Color (Pt-Co Units):** LAKEWATCH measures true color, which is the color of the water after particles have been filter out.
- **Specific Conductance ( $\mu\text{S/cm@25}^\circ\text{C}$ ):** Measurement of the ability of water to conduct electricity and can be used to estimate the amount of dissolved materials in water.

Table 3. Long-term trophic state data collected monthly by LAKEWATCH volunteers and color and specific conductance (collected quarterly).

Parameter	Minimum and Maximum Annual Geometric Means	Grand Geometric Mean (Sampling years)
Total Phosphorus ( $\mu\text{g/L}$ )	22 - 48	30 (19)
Total Nitrogen ( $\mu\text{g/L}$ )	1264 - 2172	1545 (19)
Chlorophyll- uncorrected ( $\mu\text{g/L}$ )	15 - 59	29 (19)
Secchi (ft)	1.8 - 3.2	2.4 (19)
Secchi (m)	0.5 - 1	1 (19)
Color (Pt-Co Units)	10 - 33	17 (15)
Specific Conductance ( $\mu\text{S/cm@25 C}$ )	124 - 293	249 (12)

Figure 2 and Figure 3. Trend plots of annual average total phosphorus and annual average total nitrogen versus year. The  $R^2$  value indicates the strength of the relations (ranges from 0.0 to 1.0; higher the  $R^2$  the stronger the relation) and the p value indicates if the relation is significant ( $p < 0.05$  is significant). Trend status are reported on the plots.

### Dead River-2 (Lake)



### Dead River-2 (Lake)

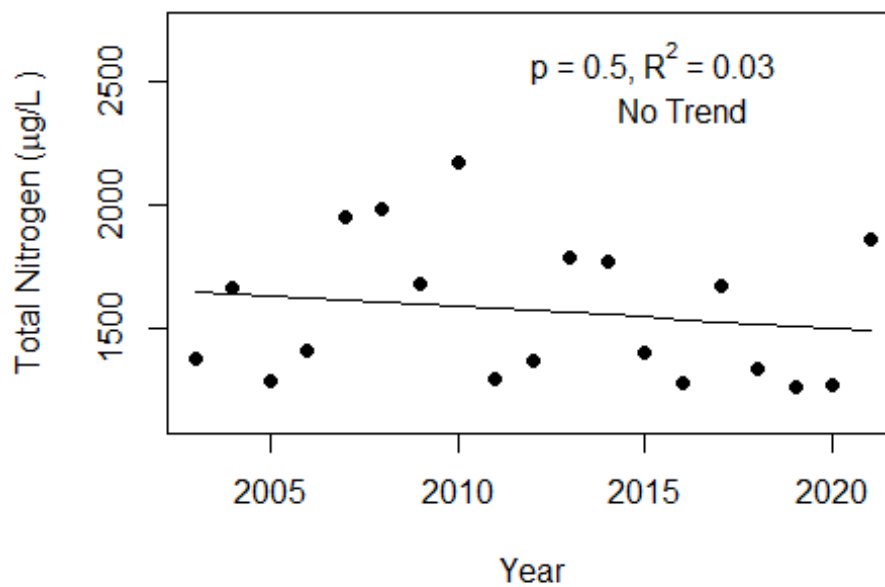
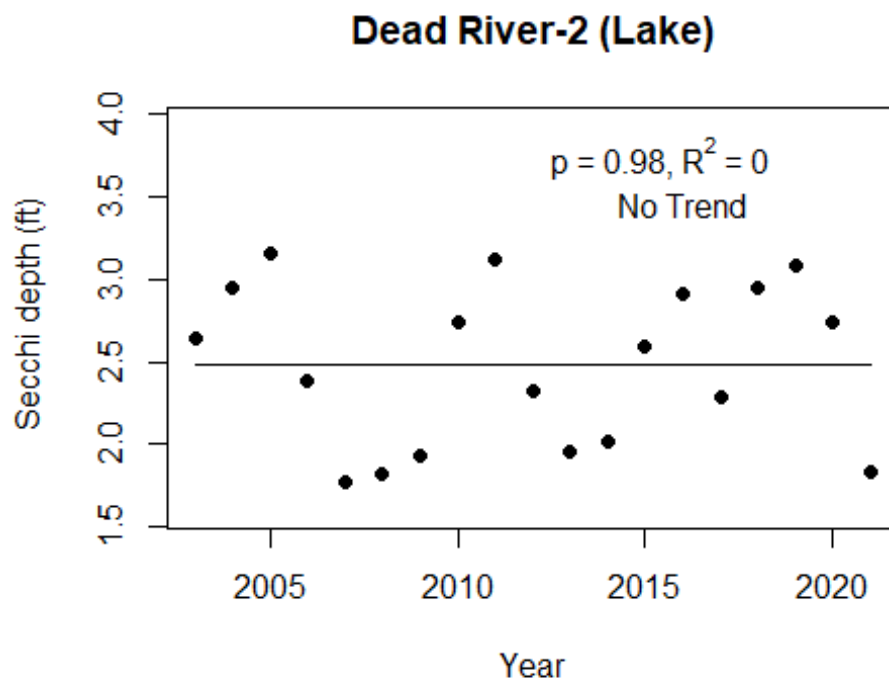
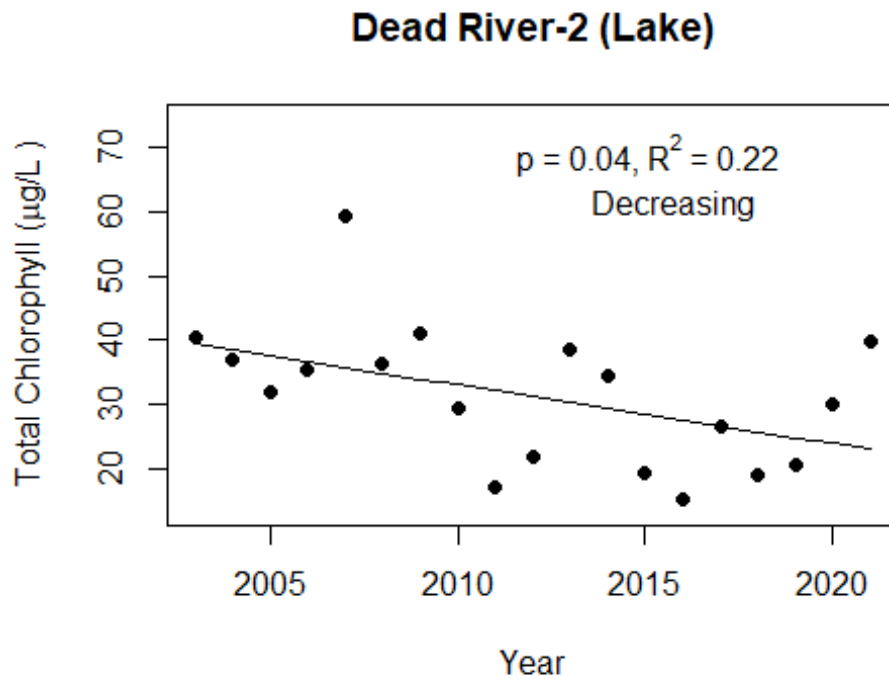


Figure 4 and Figure 5. Trend plots of annual average chlorophyll and annual average Secchi versus year. The  $R^2$  value indicates the strength of the relations (ranges from 0.0 to 1.0; higher the  $R^2$  the stronger the relations and the p value indicates if the relation is significant ( $p < 0.05$  is significant). Trend status are reported on plots.



**LAKEWATCH Report for Dead River-3 in Lake County**  
**Watershed Region: Peninsular**  
**Using Data Downloaded 1/31/22**

**Introduction for River/Streams**

This report summarizes data collected on systems that have been part of the LAKEWATCH program. Data are from the period of record for individual systems. The first part of this summary lists background data for each system, the second part lists the long-term data geometric means and ranges and the final part are the trend plots for nutrients, chlorophyll, and Secchi depth. **Plots were only made for systems with five or more years of data.**

For decades Florida has had a narrative nutrient water quality criterion in place to protect Florida’s waters against nutrient over-enrichment. In 2009, the Florida Department of Environmental Protection (FDEP) initiated rulemaking and, by 2011, adopted what would be the first set of statewide numeric nutrient standards for Florida’s waters. By 2015, almost all the remaining waters in Florida have numeric nutrient standards (see for FDEP Regulation Nutrient Criteria’s for: Streams, spring vents: <https://www.flrules.org/gateway/RuleNo.asp?title=SURFACE%20WATER%20QUALITY%20STANDARDS&ID=62-302.531>).



Figure 1. Map showing nutrient thresholds areas for streams set forth by FDEP.

Table 1. The nutrient thresholds for streams are listed in table below along with the map showing zones.

Nutrient Watershed Region	Total Phosphorus Nutrient Threshold <sup>1</sup>	Total Nitrogen Nutrient Threshold <sup>1</sup>
Panhandle West	60 µg/L	670 µg/L
Panhandle East	180 µg/L	1030 µg/L
North Central	300 µg/L	1870 µg/L
Peninsular	120 µg/L	1540 µg/L
West Central	490 µg/L	1650 µg/L
South Florida	No numeric nutrient threshold. The narrative criterion in paragraph 62-302.530(47)(b), F.A.C., applies.	No numeric nutrient threshold. The narrative criterion in paragraph 62-302.530(47)(b), F.A.C., applies.

<sup>1</sup>These values are annual geometric mean concentrations not to be exceeded more than once in any three calendar year periods.

## Base File Data for River/Streams: Definitions

- **County:** Name of county in which the system resides.
- **Name:** Stream name that LAKEWATCH uses for the system.
- **GNIS Number:** Number created by USGS's Geographic Names Information System.
- **Water Body Type:** Four different types of systems; lakes, estuaries, river/streams and springs.
- **Period of Record (years):** Number of years a system has been in the LAKEWATCH program.
- **Latitude and Longitude:** Coordinates identifying the exact location of station 1 for each system.

Table 2. Base File Data.

County	Lake
Name	Dead River-3
GNIS Number	281384
Water Body Type	River/Stream
Period of Record (years, range)	19 (2003 to 2021)
Latitude	28.8189
Longitude	-81.7602

## Long-Term Data for River/Streams: Definitions

The following long-term data are the primary trophic state parameters collected by LAKEWATCH volunteers and classification variables color and specific conductance (LAKEWATCH recently began analyzing samples quarterly for color and specific conductance):

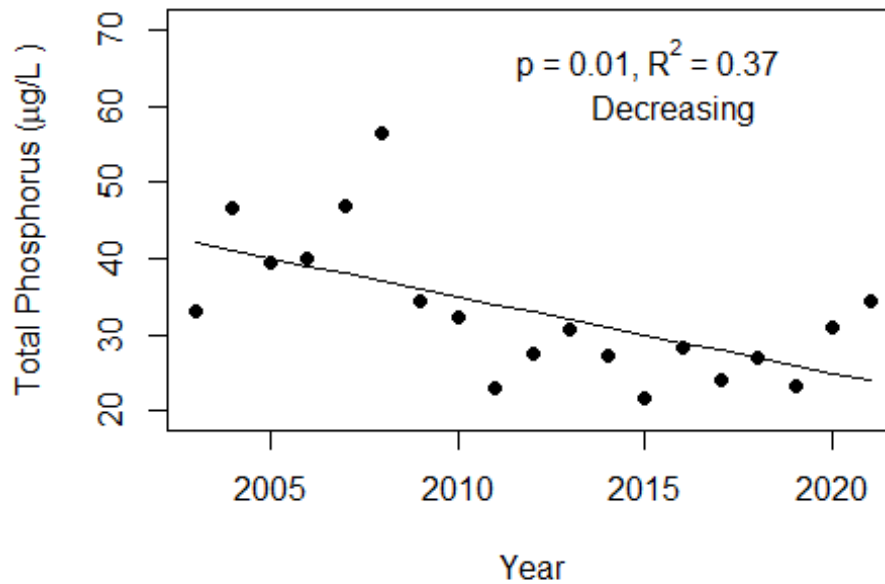
- **Total Phosphorus ( $\mu\text{g/L}$ ):** The nutrient most often limiting growth of plant/algae.
- **Total Nitrogen ( $\mu\text{g/L}$ ):** Another nutrient needed for aquatic plant/algae growth but only limiting when nitrogen to phosphorus ratios are generally less than 10.
- **Chlorophyll-uncorrected ( $\mu\text{g/L}$ ):** Chlorophyll concentrations are used to measure relative abundances of open water algal population.
- **Secchi (ft), Secchi (m):** Secchi measurements are estimates of water clarity.
- **Color (Pt-Co Units):** LAKEWATCH measures true color, which is the color of the water after particles have been filter out.
- **Specific Conductance ( $\mu\text{S/cm@25}^\circ\text{C}$ ):** Measurement of the ability of water to conduct electricity and can be used to estimate the amount of dissolved materials in water.

Table 3. Long-term trophic state data collected monthly by LAKEWATCH volunteers and color and specific conductance (collected quarterly).

Parameter	Minimum and Maximum Annual Geometric Means	Grand Geometric Mean (Sampling years)
Total Phosphorus ( $\mu\text{g/L}$ )	22 - 56	32 (19)
Total Nitrogen ( $\mu\text{g/L}$ )	1224 - 2410	1618 (19)
Chlorophyll- uncorrected ( $\mu\text{g/L}$ )	17 - 88	30 (19)
Secchi (ft)	1.3 - 3.3	2.3 (19)
Secchi (m)	0.4 - 1	1 (19)
Color (Pt-Co Units)	8 - 31	15 (15)
Specific Conductance ( $\mu\text{S/cm@25 C}$ )	148 - 327	259 (12)

Figure 2 and Figure 3. Trend plots of annual average total phosphorus and annual average total nitrogen versus year. The  $R^2$  value indicates the strength of the relations (ranges from 0.0 to 1.0; higher the  $R^2$  the stronger the relation) and the p value indicates if the relation is significant ( $p < 0.05$  is significant). Trend status are reported on the plots.

### Dead River-3 (Lake)



### Dead River-3 (Lake)

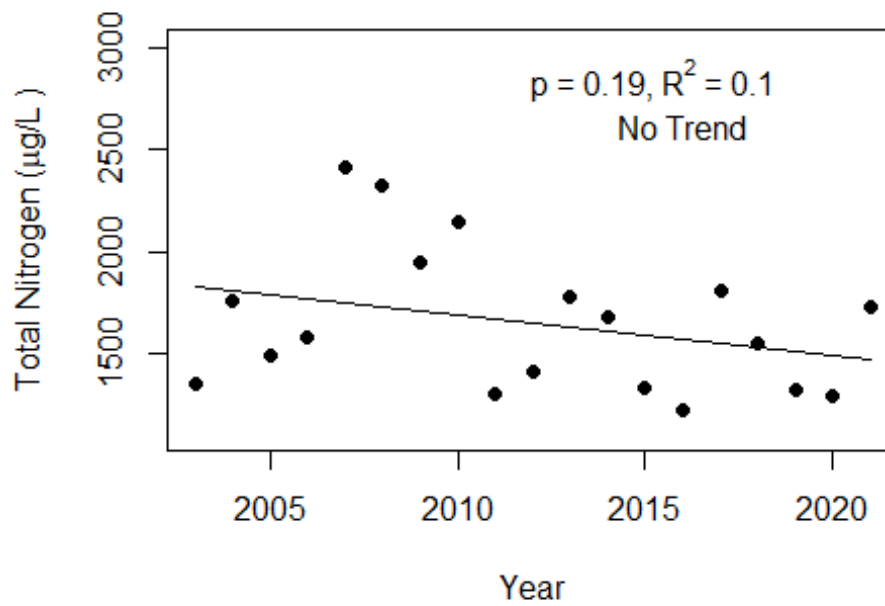
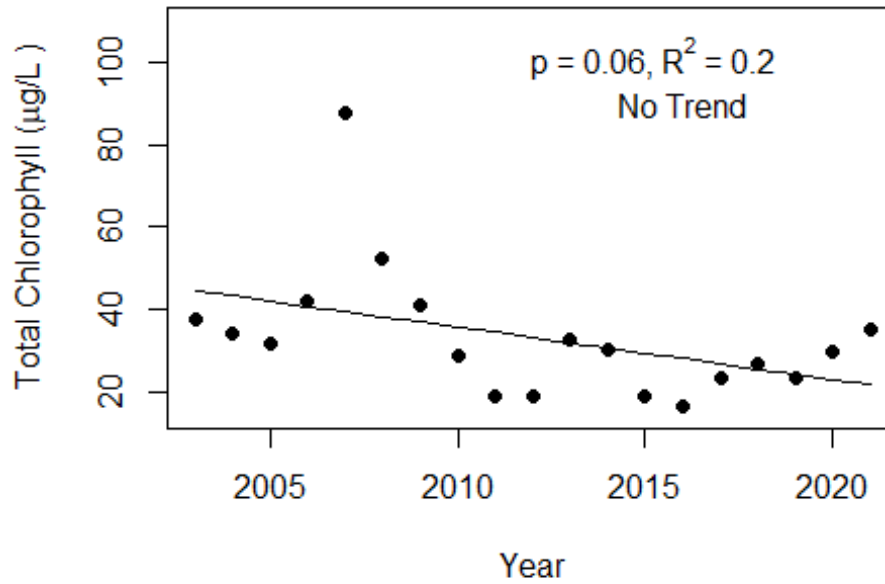
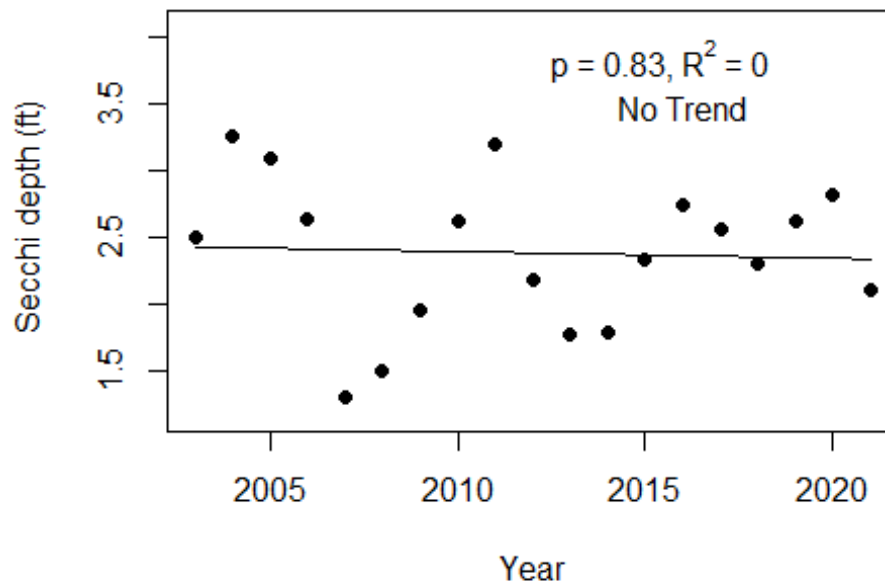


Figure 4 and Figure 5. Trend plots of annual average chlorophyll and annual average Secchi versus year. The  $R^2$  value indicates the strength of the relations (ranges from 0.0 to 1.0; higher the  $R^2$  the stronger the relations and the p value indicates if the relation is significant ( $p < 0.05$  is significant). Trend status are reported on plots.

### Dead River-3 (Lake)



### Dead River-3 (Lake)





**LAKEWATCH Report for Haines Creek-1 in Lake County**  
**Watershed Region: Peninsular**  
**Using Data Downloaded 1/31/22**

**Introduction for River/Streams**

This report summarizes data collected on systems that have been part of the LAKEWATCH program. Data are from the period of record for individual systems. The first part of this summary lists background data for each system, the second part lists the long-term data geometric means and ranges and the final part are the trend plots for nutrients, chlorophyll, and Secchi depth. **Plots were only made for systems with five or more years of data.**

For decades Florida has had a narrative nutrient water quality criterion in place to protect Florida’s waters against nutrient over-enrichment. In 2009, the Florida Department of Environmental Protection (FDEP) initiated rulemaking and, by 2011, adopted what would be the first set of statewide numeric nutrient standards for Florida’s waters. By 2015, almost all the remaining waters in Florida have numeric nutrient standards (see for FDEP Regulation Nutrient Criteria’s for: Streams, spring vents: <https://www.flrules.org/gateway/RuleNo.asp?title=SURFACE%20WATER%20QUALITY%20STANDARDS&ID=62-302.531>).



Figure 1. Map showing nutrient thresholds areas for streams set forth by FDEP.

Table 1. The nutrient thresholds for streams are listed in table below along with the map showing zones.

Nutrient Watershed Region	Total Phosphorus Nutrient Threshold <sup>1</sup>	Total Nitrogen Nutrient Threshold <sup>1</sup>
Panhandle West	60 µg/L	670 µg/L
Panhandle East	180 µg/L	1030 µg/L
North Central	300 µg/L	1870 µg/L
Peninsular	120 µg/L	1540 µg/L
West Central	490 µg/L	1650 µg/L
South Florida	No numeric nutrient threshold. The narrative criterion in paragraph 62-302.530(47)(b), F.A.C., applies.	No numeric nutrient threshold. The narrative criterion in paragraph 62-302.530(47)(b), F.A.C., applies.

<sup>1</sup>These values are annual geometric mean concentrations not to be exceeded more than once in any three calendar year periods.

## Base File Data for River/Streams: Definitions

- **County:** Name of county in which the system resides.
- **Name:** Stream name that LAKEWATCH uses for the system.
- **GNIS Number:** Number created by USGS's Geographic Names Information System.
- **Water Body Type:** Four different types of systems; lakes, estuaries, river/streams and springs.
- **Period of Record (years):** Number of years a system has been in the LAKEWATCH program.
- **Latitude and Longitude:** Coordinates identifying the exact location of station 1 for each system.

Table 2. Base File Data.

County	Lake
Name	Haines Creek-1
GNIS Number	305779
Water Body Type	River/Stream
Period of Record (years, range)	16 (2003 to 2018)
Latitude	28.887
Longitude	-81.8184

## Long-Term Data for River/Streams: Definitions

The following long-term data are the primary trophic state parameters collected by LAKEWATCH volunteers and classification variables color and specific conductance (LAKEWATCH recently began analyzing samples quarterly for color and specific conductance):

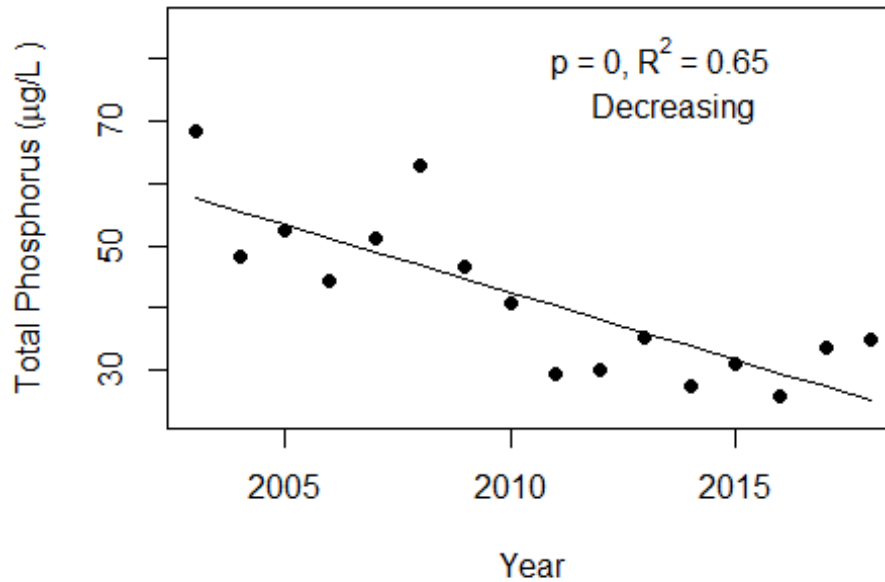
- **Total Phosphorus ( $\mu\text{g/L}$ ):** The nutrient most often limiting growth of plant/algae.
- **Total Nitrogen ( $\mu\text{g/L}$ ):** Another nutrient needed for aquatic plant/algae growth but only limiting when nitrogen to phosphorus ratios are generally less than 10.
- **Chlorophyll-uncorrected ( $\mu\text{g/L}$ ):** Chlorophyll concentrations are used to measure relative abundances of open water algal population.
- **Secchi (ft), Secchi (m):** Secchi measurements are estimates of water clarity.
- **Color (Pt-Co Units):** LAKEWATCH measures true color, which is the color of the water after particles have been filter out.
- **Specific Conductance ( $\mu\text{S/cm@25}^\circ\text{C}$ ):** Measurement of the ability of water to conduct electricity and can be used to estimate the amount of dissolved materials in water.

Table 3. Long-term trophic state data collected monthly by LAKEWATCH volunteers and color and specific conductance (collected quarterly).

Parameter	Minimum and Maximum Annual Geometric Means	Grand Geometric Mean (Sampling years)
Total Phosphorus ( $\mu\text{g/L}$ )	26 - 68	40 (16)
Total Nitrogen ( $\mu\text{g/L}$ )	1082 - 2536	1586 (16)
Chlorophyll- uncorrected ( $\mu\text{g/L}$ )	9 - 58	19 (16)
Secchi (ft)	1.6 - 5.5	3.3 (16)
Secchi (m)	0.5 -1.7	1.7 (16)
Color (Pt-Co Units)	16 - 50	27 (16)
Specific Conductance ( $\mu\text{S/cm@25 C}$ )	263 - 360	314 (12)

Figure 2 and Figure 3. Trend plots of annual average total phosphorus and annual average total nitrogen versus year. The  $R^2$  value indicates the strength of the relations (ranges from 0.0 to 1.0; higher the  $R^2$  the stronger the relation) and the p value indicates if the relation is significant ( $p < 0.05$  is significant). Trend status are reported on the plots.

### Haines Creek-1 (Lake)



### Haines Creek-1 (Lake)

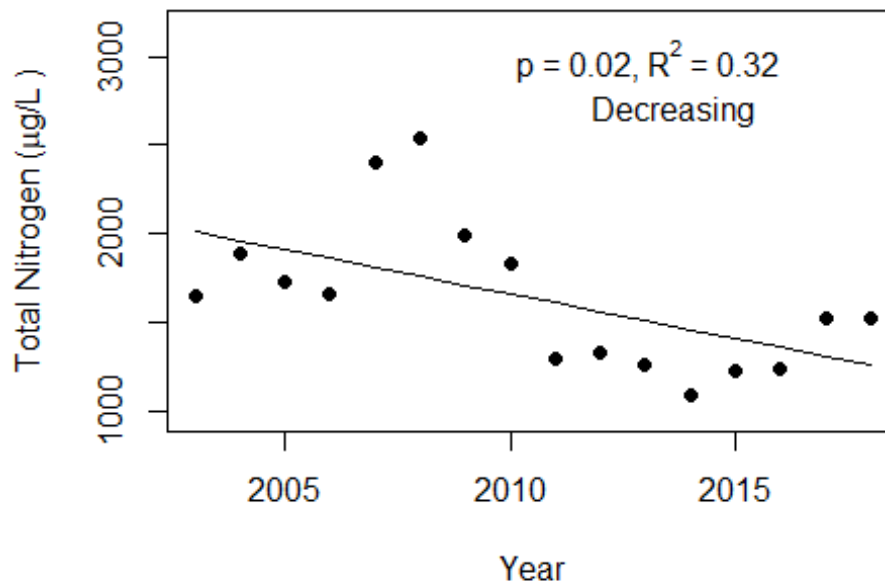
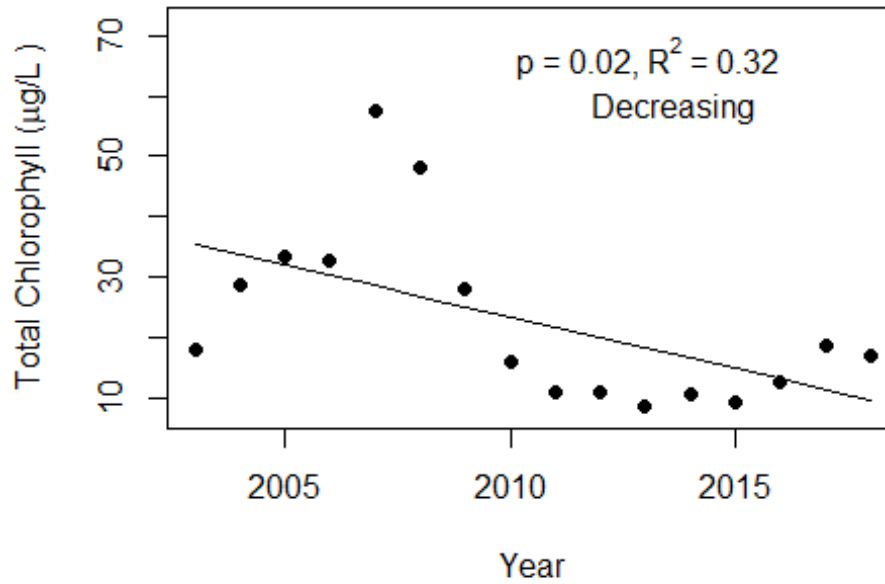
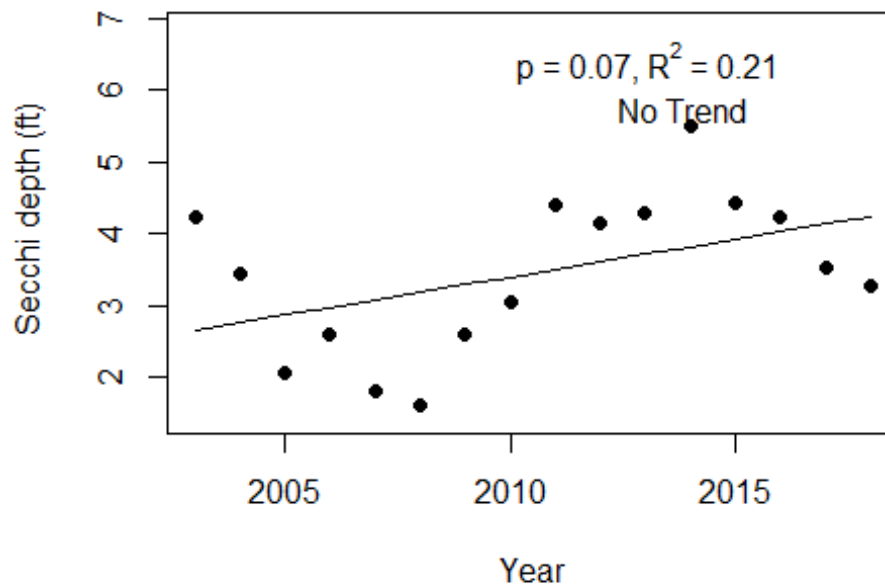


Figure 4 and Figure 5. Trend plots of annual average chlorophyll and annual average Secchi versus year. The  $R^2$  value indicates the strength of the relations (ranges from 0.0 to 1.0; higher the  $R^2$  the stronger the relations and the p value indicates if the relation is significant ( $p < 0.05$  is significant). Trend status are reported on plots.

### Haines Creek-1 (Lake)



### Haines Creek-1 (Lake)



**LAKEWATCH Report for Haines Creek-2 in Lake County**  
**Watershed Region: Peninsular**  
**Using Data Downloaded 1/31/22**

**Introduction for River/Streams**

This report summarizes data collected on systems that have been part of the LAKEWATCH program. Data are from the period of record for individual systems. The first part of this summary lists background data for each system, the second part lists the long-term data geometric means and ranges and the final part are the trend plots for nutrients, chlorophyll, and Secchi depth. **Plots were only made for systems with five or more years of data.**

For decades Florida has had a narrative nutrient water quality criterion in place to protect Florida’s waters against nutrient over-enrichment. In 2009, the Florida Department of Environmental Protection (FDEP) initiated rulemaking and, by 2011, adopted what would be the first set of statewide numeric nutrient standards for Florida’s waters. By 2015, almost all the remaining waters in Florida have numeric nutrient standards (see for FDEP Regulation Nutrient Criteria’s for: Streams, spring vents: <https://www.flrules.org/gateway/RuleNo.asp?title=SURFACE%20WATER%20QUALITY%20STANDARDS&ID=62-302.531>).



Figure 1. Map showing nutrient thresholds areas for streams set forth by FDEP.

Table 1. The nutrient thresholds for streams are listed in table below along with the map showing zones.

Nutrient Watershed Region	Total Phosphorus Nutrient Threshold <sup>1</sup>	Total Nitrogen Nutrient Threshold <sup>1</sup>
Panhandle West	60 µg/L	670 µg/L
Panhandle East	180 µg/L	1030 µg/L
North Central	300 µ/L	1870 µg/L
Peninsular	120 µg/L	1540 µg/L
West Central	490 µg/L	1650 µg/L
South Florida	No numeric nutrient threshold. The narrative criterion in paragraph 62-302.530(47)(b), F.A.C., applies.	No numeric nutrient threshold. The narrative criterion in paragraph 62-302.530(47)(b), F.A.C., applies.

<sup>1</sup>These values are annual geometric mean concentrations not to be exceeded more than once in any three calendar year periods.

## Base File Data for River/Streams: Definitions

- **County:** Name of county in which the system resides.
- **Name:** Stream name that LAKEWATCH uses for the system.
- **GNIS Number:** Number created by USGS's Geographic Names Information System.
- **Water Body Type:** Four different types of systems; lakes, estuaries, river/streams and springs.
- **Period of Record (years):** Number of years a system has been in the LAKEWATCH program.
- **Latitude and Longitude:** Coordinates identifying the exact location of station 1 for each system.

Table 2. Base File Data.

County	Lake
Name	Haines Creek-2
GNIS Number	305779
Water Body Type	River/Stream
Period of Record (years, range)	16 (2003 to 2018)
Latitude	28.8814
Longitude	-81.8074

## Long-Term Data for River/Streams: Definitions

The following long-term data are the primary trophic state parameters collected by LAKEWATCH volunteers and classification variables color and specific conductance (LAKEWATCH recently began analyzing samples quarterly for color and specific conductance):

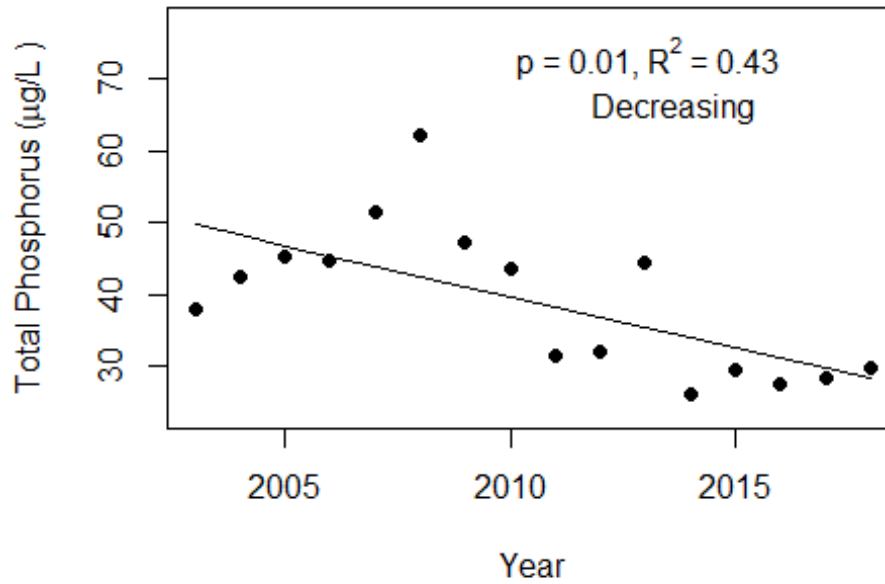
- **Total Phosphorus ( $\mu\text{g/L}$ ):** The nutrient most often limiting growth of plant/algae.
- **Total Nitrogen ( $\mu\text{g/L}$ ):** Another nutrient needed for aquatic plant/algae growth but only limiting when nitrogen to phosphorus ratios are generally less than 10.
- **Chlorophyll-uncorrected ( $\mu\text{g/L}$ ):** Chlorophyll concentrations are used to measure relative abundances of open water algal population.
- **Secchi (ft), Secchi (m):** Secchi measurements are estimates of water clarity.
- **Color (Pt-Co Units):** LAKEWATCH measures true color, which is the color of the water after particles have been filter out.
- **Specific Conductance ( $\mu\text{S/cm@25}^\circ\text{C}$ ):** Measurement of the ability of water to conduct electricity and can be used to estimate the amount of dissolved materials in water.

Table 3. Long-term trophic state data collected monthly by LAKEWATCH volunteers and color and specific conductance (collected quarterly).

Parameter	Minimum and Maximum Annual Geometric Means	Grand Geometric Mean (Sampling years)
Total Phosphorus ( $\mu\text{g/L}$ )	26 - 62	38 (16)
Total Nitrogen ( $\mu\text{g/L}$ )	1166 - 2578	1593 (16)
Chlorophyll- uncorrected ( $\mu\text{g/L}$ )	9 - 56	20 (16)
Secchi (ft)	1.6 - 4.6	3.1 (16)
Secchi (m)	0.5 -1.4	1.4 (16)
Color (Pt-Co Units)	17 - 37	26 (16)
Specific Conductance ( $\mu\text{S/cm@25 C}$ )	235 - 361	303 (12)

Figure 2 and Figure 3. Trend plots of annual average total phosphorus and annual average total nitrogen versus year. The  $R^2$  value indicates the strength of the relations (ranges from 0.0 to 1.0; higher the  $R^2$  the stronger the relation) and the p value indicates if the relation is significant ( $p < 0.05$  is significant). Trend status are reported on the plots.

Haines Creek-2 (Lake)



Haines Creek-2 (Lake)

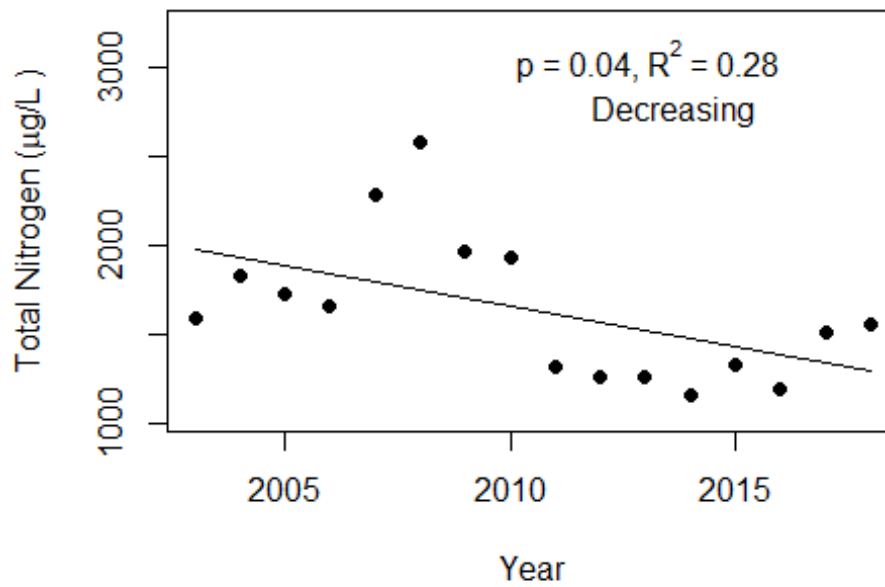
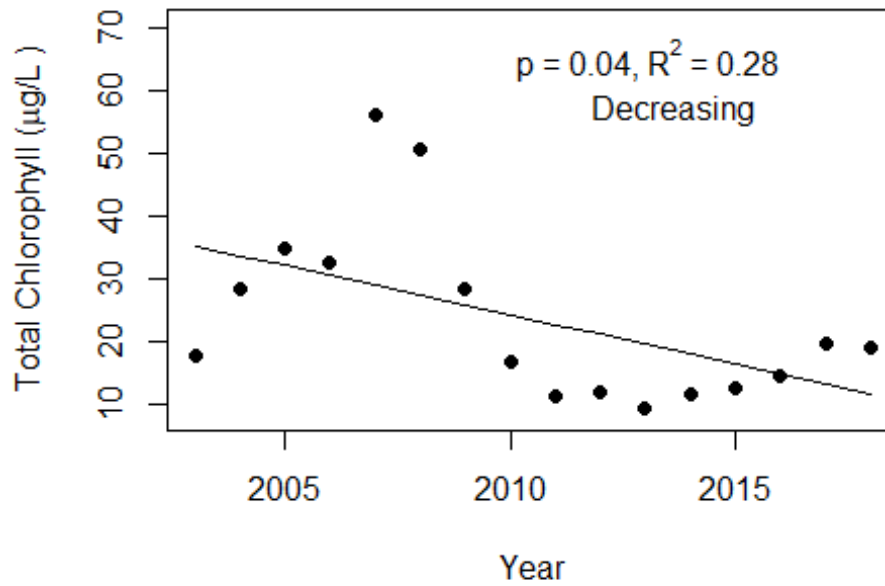
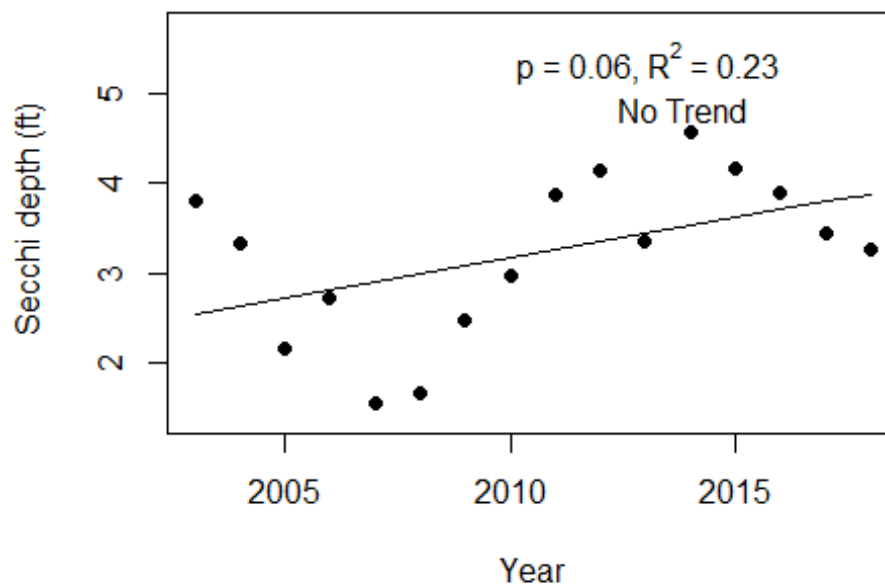


Figure 4 and Figure 5. Trend plots of annual average chlorophyll and annual average Secchi versus year. The  $R^2$  value indicates the strength of the relations (ranges from 0.0 to 1.0; higher the  $R^2$  the stronger the relations and the p value indicates if the relation is significant ( $p < 0.05$  is significant). Trend status are reported on plots.

### Haines Creek-2 (Lake)



### Haines Creek-2 (Lake)





**LAKEWATCH Report for Haines Creek-3 in Lake County**  
**Watershed Region: Peninsular**  
**Using Data Downloaded 1/31/22**

**Introduction for River/Streams**

This report summarizes data collected on systems that have been part of the LAKEWATCH program. Data are from the period of record for individual systems. The first part of this summary lists background data for each system, the second part lists the long-term data geometric means and ranges and the final part are the trend plots for nutrients, chlorophyll, and Secchi depth. **Plots were only made for systems with five or more years of data.**

For decades Florida has had a narrative nutrient water quality criterion in place to protect Florida’s waters against nutrient over-enrichment. In 2009, the Florida Department of Environmental Protection (FDEP) initiated rulemaking and, by 2011, adopted what would be the first set of statewide numeric nutrient standards for Florida’s waters. By 2015, almost all the remaining waters in Florida have numeric nutrient standards (see for FDEP Regulation Nutrient Criteria’s for: Streams, spring vents: <https://www.flrules.org/gateway/RuleNo.asp?title=SURFACE%20WATER%20QUALITY%20STANDARDS&ID=62-302.531>).



Figure 1. Map showing nutrient thresholds areas for streams set forth by FDEP.

Table 1. The nutrient thresholds for streams are listed in table below along with the map showing zones.

Nutrient Watershed Region	Total Phosphorus Nutrient Threshold <sup>1</sup>	Total Nitrogen Nutrient Threshold <sup>1</sup>
Panhandle West	60 µg/L	670 µg/L
Panhandle East	180 µg/L	1030 µg/L
North Central	300 µg/L	1870 µg/L
Peninsular	120 µg/L	1540 µg/L
West Central	490 µg/L	1650 µg/L
South Florida	No numeric nutrient threshold. The narrative criterion in paragraph 62-302.530(47)(b), F.A.C., applies.	No numeric nutrient threshold. The narrative criterion in paragraph 62-302.530(47)(b), F.A.C., applies.

<sup>1</sup>These values are annual geometric mean concentrations not to be exceeded more than once in any three calendar year periods.

## Base File Data for River/Streams: Definitions

- **County:** Name of county in which the system resides.
- **Name:** Stream name that LAKEWATCH uses for the system.
- **GNIS Number:** Number created by USGS's Geographic Names Information System.
- **Water Body Type:** Four different types of systems; lakes, estuaries, river/streams and springs.
- **Period of Record (years):** Number of years a system has been in the LAKEWATCH program.
- **Latitude and Longitude:** Coordinates identifying the exact location of station 1 for each system.

Table 2. Base File Data.

County	Lake
Name	Haines Creek-3
GNIS Number	305779
Water Body Type	River/Stream
Period of Record (years, range)	16 (2003 to 2018)
Latitude	28.8564
Longitude	-81.7679

## Long-Term Data for River/Streams: Definitions

The following long-term data are the primary trophic state parameters collected by LAKEWATCH volunteers and classification variables color and specific conductance (LAKEWATCH recently began analyzing samples quarterly for color and specific conductance):

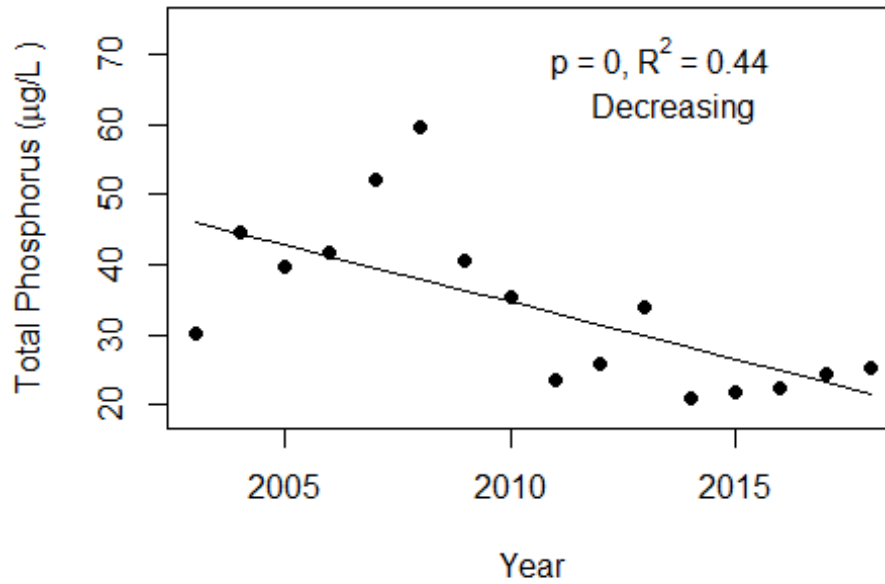
- **Total Phosphorus ( $\mu\text{g/L}$ ):** The nutrient most often limiting growth of plant/algae.
- **Total Nitrogen ( $\mu\text{g/L}$ ):** Another nutrient needed for aquatic plant/algae growth but only limiting when nitrogen to phosphorus ratios are generally less than 10.
- **Chlorophyll-uncorrected ( $\mu\text{g/L}$ ):** Chlorophyll concentrations are used to measure relative abundances of open water algal population.
- **Secchi (ft), Secchi (m):** Secchi measurements are estimates of water clarity.
- **Color (Pt-Co Units):** LAKEWATCH measures true color, which is the color of the water after particles have been filter out.
- **Specific Conductance ( $\mu\text{S/cm@25}^\circ\text{C}$ ):** Measurement of the ability of water to conduct electricity and can be used to estimate the amount of dissolved materials in water.

Table 3. Long-term trophic state data collected monthly by LAKEWATCH volunteers and color and specific conductance (collected quarterly).

Parameter	Minimum and Maximum Annual Geometric Means	Grand Geometric Mean (Sampling years)
Total Phosphorus ( $\mu\text{g/L}$ )	21 - 60	32 (16)
Total Nitrogen ( $\mu\text{g/L}$ )	1272 - 2780	1732 (16)
Chlorophyll- uncorrected ( $\mu\text{g/L}$ )	15 - 71	26 (16)
Secchi (ft)	1.4 - 3.7	2.6 (16)
Secchi (m)	0.4 -1.1	1.1 (16)
Color (Pt-Co Units)	7 - 30	18 (16)
Specific Conductance ( $\mu\text{S/cm@25 C}$ )	253 - 356	300 (12)

Figure 2 and Figure 3. Trend plots of annual average total phosphorus and annual average total nitrogen versus year. The  $R^2$  value indicates the strength of the relations (ranges from 0.0 to 1.0; higher the  $R^2$  the stronger the relation) and the p value indicates if the relation is significant ( $p < 0.05$  is significant). Trend status are reported on the plots.

### Haines Creek-3 (Lake)



### Haines Creek-3 (Lake)

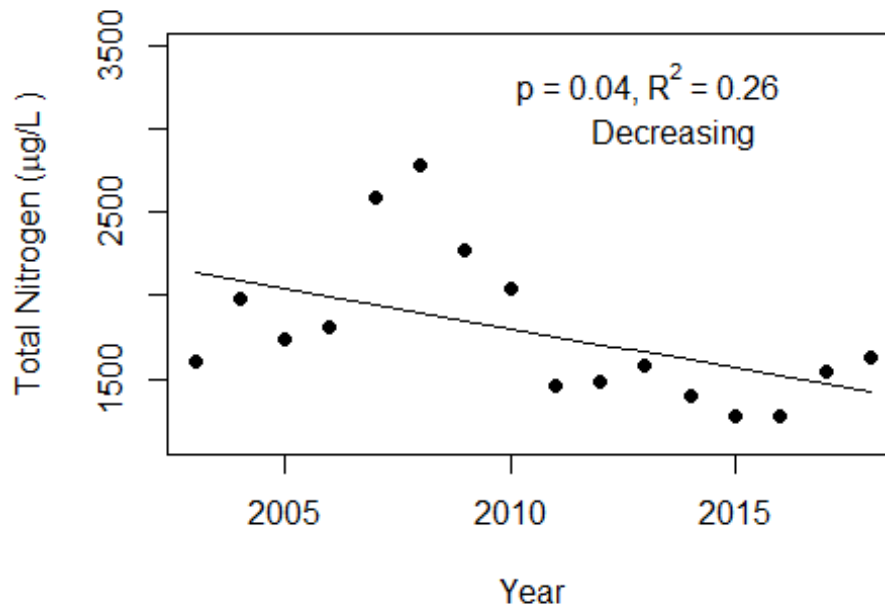
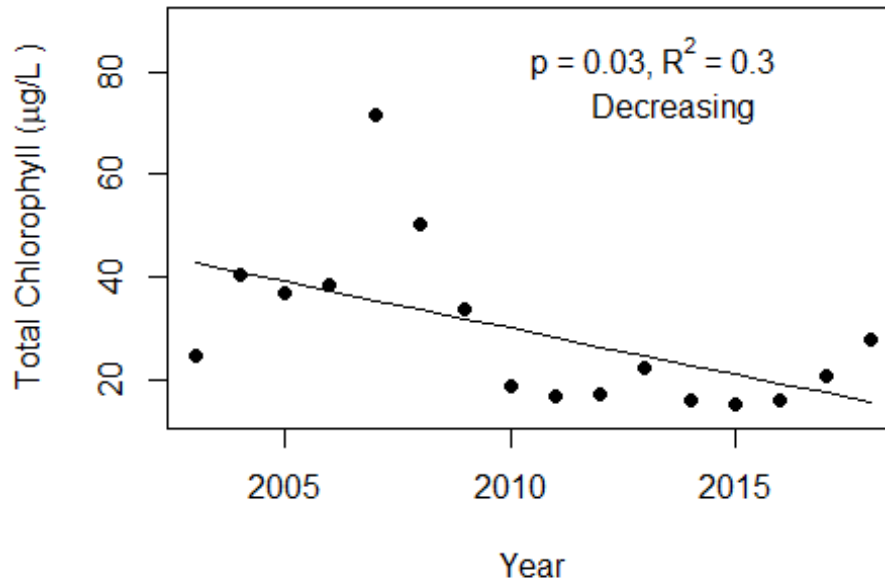
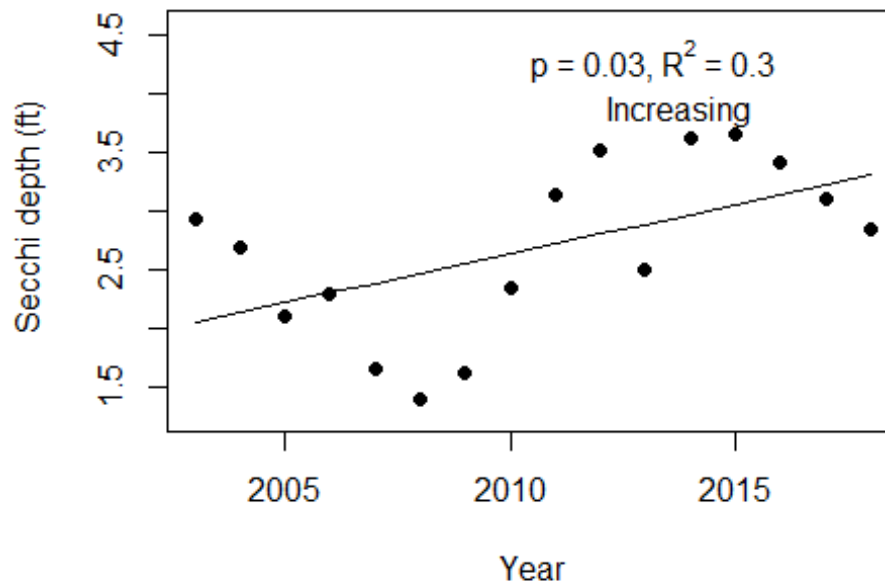


Figure 4 and Figure 5. Trend plots of annual average chlorophyll and annual average Secchi versus year. The  $R^2$  value indicates the strength of the relations (ranges from 0.0 to 1.0; higher the  $R^2$  the stronger the relations and the p value indicates if the relation is significant ( $p < 0.05$  is significant)). Trend status are reported on plots.

### Haines Creek-3 (Lake)



### Haines Creek-3 (Lake)



**LAKEWATCH Report for Haines Creek-4 in Lake County**  
**Watershed Region: Peninsular**  
**Using Data Downloaded 1/31/22**

**Introduction for River/Streams**

This report summarizes data collected on systems that have been part of the LAKEWATCH program. Data are from the period of record for individual systems. The first part of this summary lists background data for each system, the second part lists the long-term data geometric means and ranges and the final part are the trend plots for nutrients, chlorophyll, and Secchi depth. **Plots were only made for systems with five or more years of data.**

For decades Florida has had a narrative nutrient water quality criterion in place to protect Florida’s waters against nutrient over-enrichment. In 2009, the Florida Department of Environmental Protection (FDEP) initiated rulemaking and, by 2011, adopted what would be the first set of statewide numeric nutrient standards for Florida’s waters. By 2015, almost all the remaining waters in Florida have numeric nutrient standards (see for FDEP Regulation Nutrient Criteria’s for: Streams, spring vents:

<https://www.flrules.org/gateway/RuleNo.asp?title=SURFACE%20WATER%20QUALITY%20STANDARDS&ID=62-302.531>).



Figure 1. Map showing nutrient thresholds areas for streams set forth by FDEP.

Table 1. The nutrient thresholds for streams are listed in table below along with the map showing zones.

Nutrient Watershed Region	Total Phosphorus Nutrient Threshold <sup>1</sup>	Total Nitrogen Nutrient Threshold <sup>1</sup>
Panhandle West	60 µg/L	670 µg/L
Panhandle East	180 µg/L	1030 µg/L
North Central	300 µg/L	1870 µg/L
Peninsular	120 µg/L	1540 µg/L
West Central	490 µg/L	1650 µg/L
South Florida	No numeric nutrient threshold. The narrative criterion in paragraph 62-302.530(47)(b), F.A.C., applies.	No numeric nutrient threshold. The narrative criterion in paragraph 62-302.530(47)(b), F.A.C., applies.

<sup>1</sup>These values are annual geometric mean concentrations not to be exceeded more than once in any three calendar year periods.

## Base File Data for River/Streams: Definitions

- **County:** Name of county in which the system resides.
- **Name:** Stream name that LAKEWATCH uses for the system.
- **GNIS Number:** Number created by USGS's Geographic Names Information System.
- **Water Body Type:** Four different types of systems; lakes, estuaries, river/streams and springs.
- **Period of Record (years):** Number of years a system has been in the LAKEWATCH program.
- **Latitude and Longitude:** Coordinates identifying the exact location of station 1 for each system.

Table 2. Base File Data.

County	Lake
Name	Haines Creek-4
GNIS Number	305779
Water Body Type	River/Stream
Period of Record (years, range)	16 (2003 to 2018)
Latitude	28.8665
Longitude	-81.7748

## Long-Term Data for River/Streams: Definitions

The following long-term data are the primary trophic state parameters collected by LAKEWATCH volunteers and classification variables color and specific conductance (LAKEWATCH recently began analyzing samples quarterly for color and specific conductance):

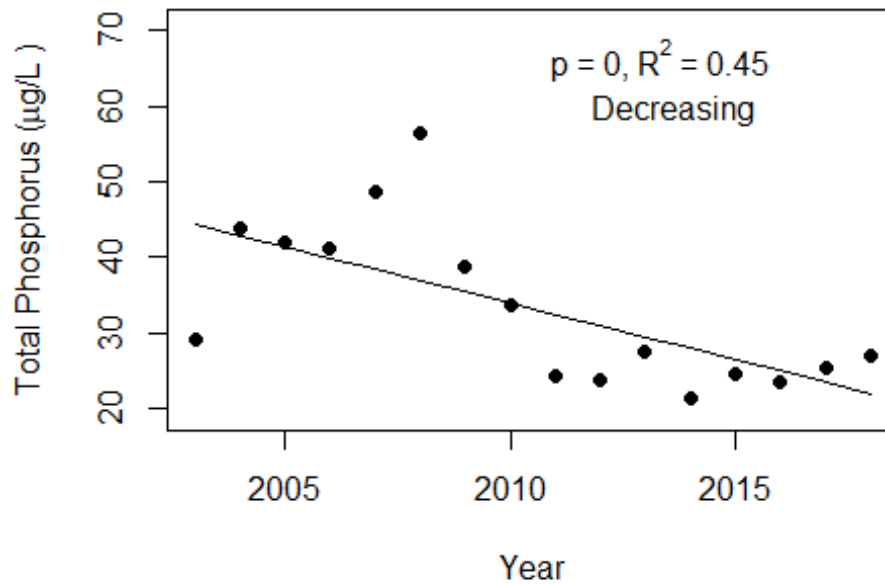
- **Total Phosphorus ( $\mu\text{g/L}$ ):** The nutrient most often limiting growth of plant/algae.
- **Total Nitrogen ( $\mu\text{g/L}$ ):** Another nutrient needed for aquatic plant/algae growth but only limiting when nitrogen to phosphorus ratios are generally less than 10.
- **Chlorophyll-uncorrected ( $\mu\text{g/L}$ ):** Chlorophyll concentrations are used to measure relative abundances of open water algal population.
- **Secchi (ft), Secchi (m):** Secchi measurements are estimates of water clarity.
- **Color (Pt-Co Units):** LAKEWATCH measures true color, which is the color of the water after particles have been filter out.
- **Specific Conductance ( $\mu\text{S/cm@25}^\circ\text{C}$ ):** Measurement of the ability of water to conduct electricity and can be used to estimate the amount of dissolved materials in water.

Table 3. Long-term trophic state data collected monthly by LAKEWATCH volunteers and color and specific conductance (collected quarterly).

Parameter	Minimum and Maximum Annual Geometric Means	Grand Geometric Mean (Sampling years)
Total Phosphorus ( $\mu\text{g/L}$ )	21 - 56	32 (16)
Total Nitrogen ( $\mu\text{g/L}$ )	1214 - 2543	1650 (16)
Chlorophyll- uncorrected ( $\mu\text{g/L}$ )	12 - 63	23 (16)
Secchi (ft)	1.6 - 4.7	3 (16)
Secchi (m)	0.5 - 1.4	1.4 (16)
Color (Pt-Co Units)	14 - 36	23 (16)
Specific Conductance ( $\mu\text{S/cm@25 C}$ )	247 - 358	309 (12)

Figure 2 and Figure 3. Trend plots of annual average total phosphorus and annual average total nitrogen versus year. The  $R^2$  value indicates the strength of the relations (ranges from 0.0 to 1.0; higher the  $R^2$  the stronger the relation) and the p value indicates if the relation is significant ( $p < 0.05$  is significant). Trend status are reported on the plots.

### Haines Creek-4 (Lake)



### Haines Creek-4 (Lake)

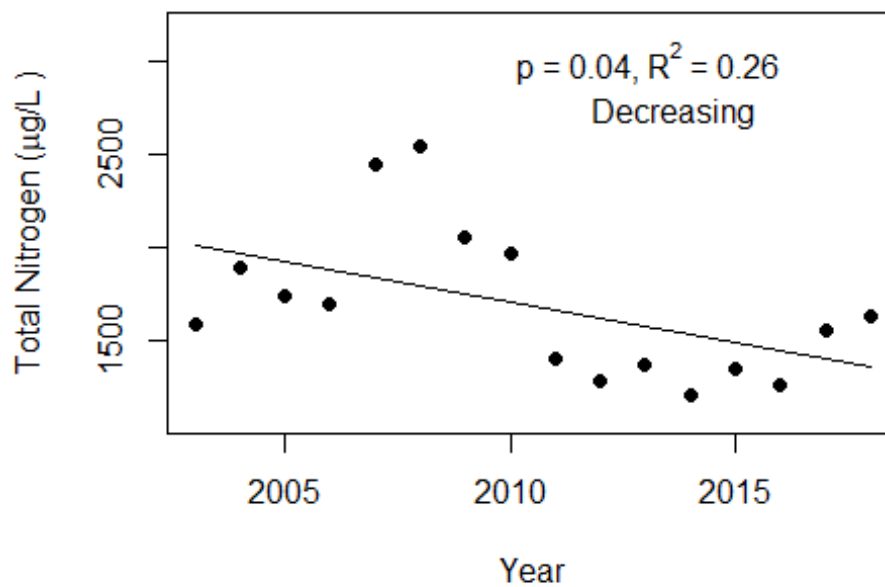
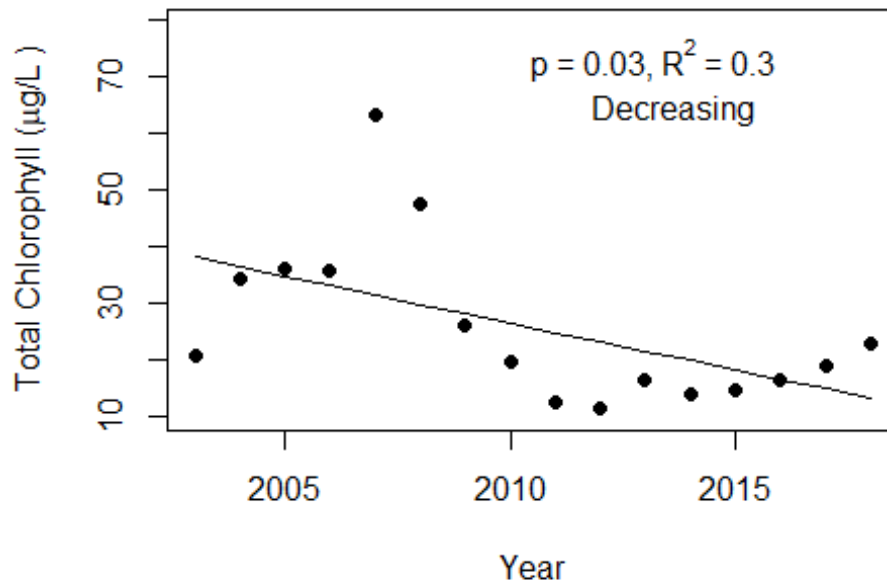


Figure 4 and Figure 5. Trend plots of annual average chlorophyll and annual average Secchi versus year. The  $R^2$  value indicates the strength of the relations (ranges from 0.0 to 1.0; higher the  $R^2$  the stronger the relations and the p value indicates if the relation is significant ( $p < 0.05$  is significant)). Trend status are reported on plots.

### Haines Creek-4 (Lake)



### Haines Creek-4 (Lake)

