

LAKEWATCH Report for Blues Creek-1 in Alachua County
Watershed Region: North Central
Using Data Downloaded 1/31/22

Introduction for River/Streams

This report summarizes data collected on systems that have been part of the LAKEWATCH program. Data are from the period of record for individual systems. The first part of this summary lists background data for each system, the second part lists the long-term data geometric means and ranges and the final part are the trend plots for nutrients, chlorophyll, and Secchi depth. **Plots were only made for systems with five or more years of data.**

For decades Florida has had a narrative nutrient water quality criterion in place to protect Florida’s waters against nutrient over-enrichment. In 2009, the Florida Department of Environmental Protection (FDEP) initiated rulemaking and, by 2011, adopted what would be the first set of statewide numeric nutrient standards for Florida’s waters. By 2015, almost all the remaining waters in Florida have numeric nutrient standards (see for FDEP Regulation Nutrient Criteria’s for: Streams, spring vents: <https://www.flrules.org/gateway/RuleNo.asp?title=SURFACE%20WATER%20QUALITY%20STANDARDS&ID=62-302.531>).

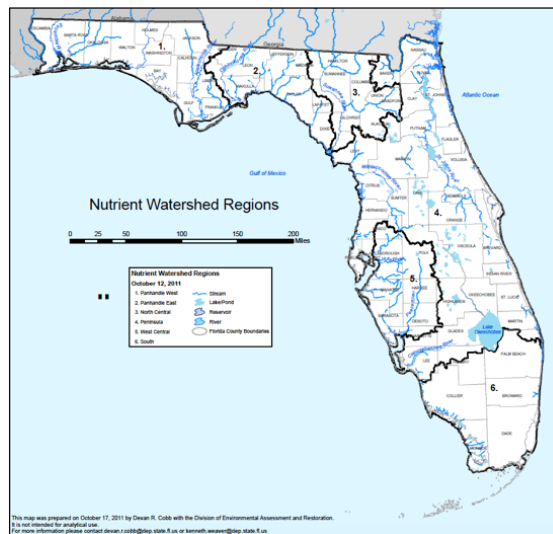


Figure 1. Map showing nutrient thresholds areas for streams set forth by FDEP.

Table 1. The nutrient thresholds for streams are listed in table below along with the map showing zones.

Nutrient Watershed Region	Total Phosphorus Nutrient Threshold ¹	Total Nitrogen Nutrient Threshold ¹
Panhandle West	60 µg/L	670 µg/L
Panhandle East	180 µg/L	1030 µg/L
North Central	300 µg/L	1870 µg/L
Peninsular	120 µg/L	1540 µg/L
West Central	490 µg/L	1650 µg/L
South Florida	No numeric nutrient threshold. The narrative criterion in paragraph 62-302.530(47)(b), F.A.C., applies.	No numeric nutrient threshold. The narrative criterion in paragraph 62-302.530(47)(b), F.A.C., applies.

¹These values are annual geometric mean concentrations not to be exceeded more than once in any three calendar year periods.

Base File Data for River/Streams: Definitions

- **County:** Name of county in which the system resides.
- **Name:** Stream name that LAKEWATCH uses for the system.
- **GNIS Number:** Number created by USGS's Geographic Names Information System.
- **Water Body Type:** Four different types of systems; lakes, estuaries, river/streams and springs.
- **Period of Record (years):** Number of years a system has been in the LAKEWATCH program.
- **Latitude and Longitude:** Coordinates identifying the exact location of station 1 for each system.

Table 2. Base File Data.

County	Alachua
Name	Blues Creek-1
GNIS Number	279084
Water Body Type	River/Stream
Period of Record (years, range)	12 (2009 to 2021)
Latitude	29.7179
Longitude	-82.4184

Long-Term Data for River/Streams: Definitions

The following long-term data are the primary trophic state parameters collected by LAKEWATCH volunteers and classification variables color and specific conductance (LAKEWATCH recently began analyzing samples quarterly for color and specific conductance):

- **Total Phosphorus ($\mu\text{g/L}$):** The nutrient most often limiting growth of plant/algae.
- **Total Nitrogen ($\mu\text{g/L}$):** Another nutrient needed for aquatic plant/algae growth but only limiting when nitrogen to phosphorus ratios are generally less than 10.
- **Chlorophyll-uncorrected ($\mu\text{g/L}$):** Chlorophyll concentrations are used to measure relative abundances of open water algal population.
- **Secchi (ft), Secchi (m):** Secchi measurements are estimates of water clarity.
- **Color (Pt-Co Units):** LAKEWATCH measures true color, which is the color of the water after particles have been filter out.
- **Specific Conductance ($\mu\text{S/cm@25}^\circ\text{C}$):** Measurement of the ability of water to conduct electricity and can be used to estimate the amount of dissolved materials in water.

Table 3. Long-term trophic state data collected monthly by LAKEWATCH volunteers and color and specific conductance (collected quarterly).

Parameter	Minimum and Maximum Annual Geometric Means	Grand Geometric Mean (Sampling years)
Total Phosphorus ($\mu\text{g/L}$)	224 - 785	383 (12)
Total Nitrogen ($\mu\text{g/L}$)	309 - 1886	627 (12)
Chlorophyll- uncorrected ($\mu\text{g/L}$)	1 - 3	2 (12)
Secchi (ft)	-	(0)
Secchi (m)	-	(0)
Color (Pt-Co Units)	10 - 393	36 (12)
Specific Conductance ($\mu\text{S/cm@25 C}$)	89 - 284	205 (12)

Figure 2 and Figure 3. Trend plots of annual average total phosphorus and annual average total nitrogen versus year. The R^2 value indicates the strength of the relations (ranges from 0.0 to 1.0; higher the R^2 the stronger the relation) and the p value indicates if the relation is significant ($p < 0.05$ is significant). Trend status are reported on the plots.

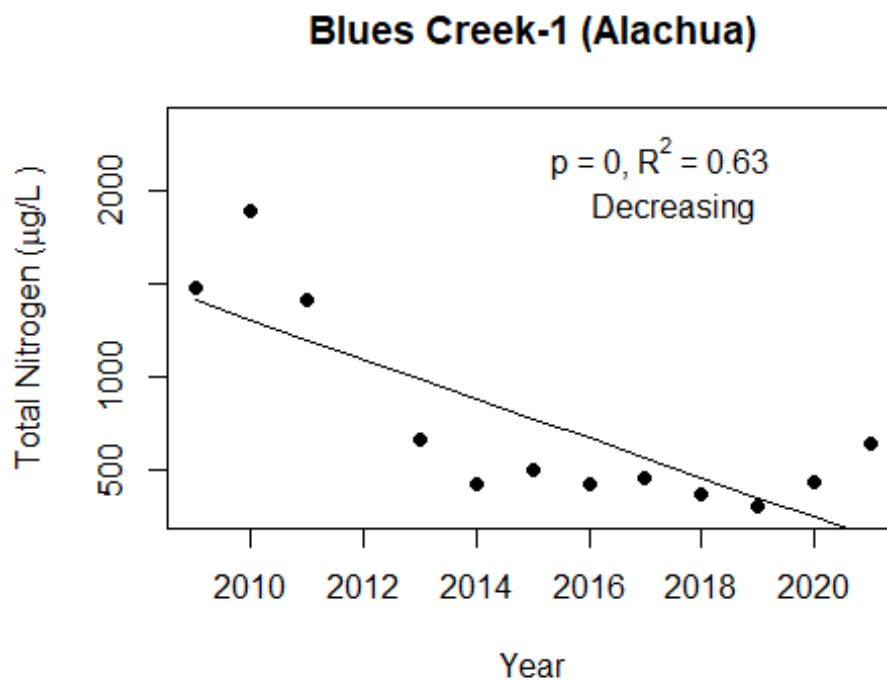
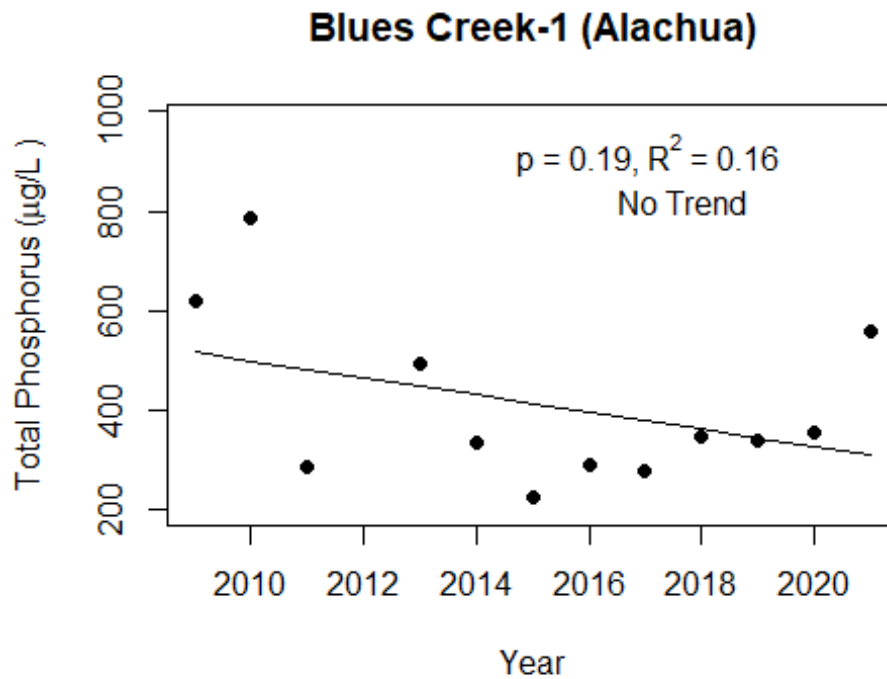
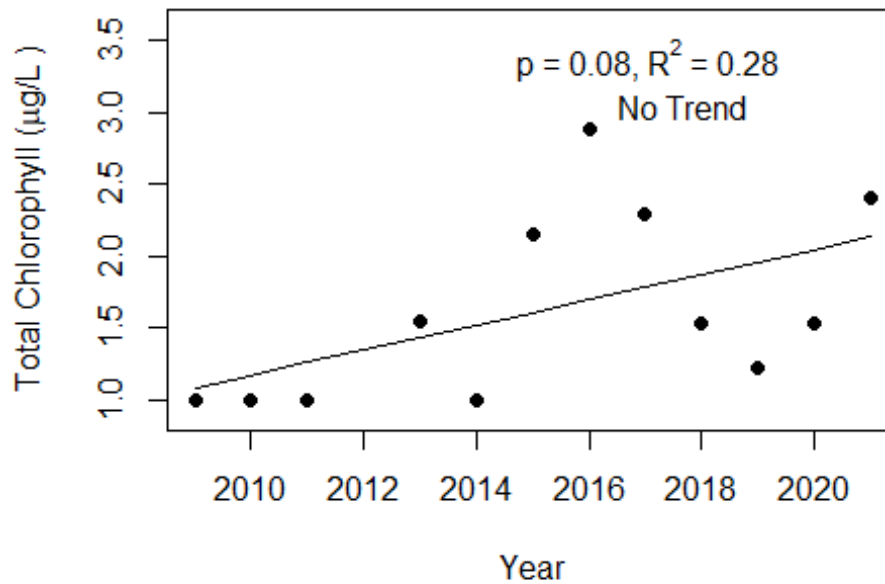
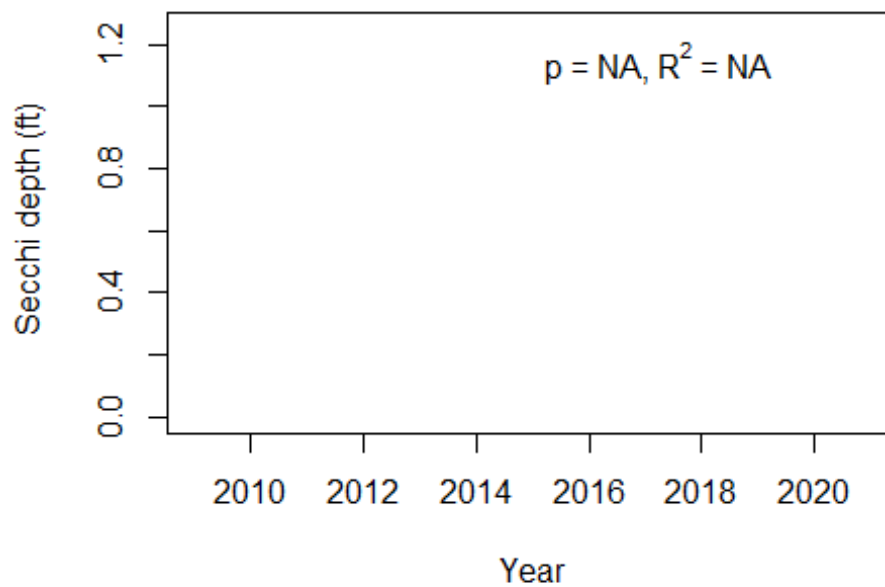


Figure 4 and Figure 5. Trend plots of annual average chlorophyll and annual average Secchi versus year. The R^2 value indicates the strength of the relations (ranges from 0.0 to 1.0; higher the R^2 the stronger the relations and the p value indicates if the relation is significant ($p < 0.05$ is significant). Trend status are reported on plots.

Blues Creek-1 (Alachua)



Blues Creek-1 (Alachua)



LAKEWATCH Report for Blues Creek-2 in Alachua County
Watershed Region: North Central
Using Data Downloaded 1/31/22

Introduction for River/Streams

This report summarizes data collected on systems that have been part of the LAKEWATCH program. Data are from the period of record for individual systems. The first part of this summary lists background data for each system, the second part lists the long-term data geometric means and ranges and the final part are the trend plots for nutrients, chlorophyll, and Secchi depth. **Plots were only made for systems with five or more years of data.**

For decades Florida has had a narrative nutrient water quality criterion in place to protect Florida’s waters against nutrient over-enrichment. In 2009, the Florida Department of Environmental Protection (FDEP) initiated rulemaking and, by 2011, adopted what would be the first set of statewide numeric nutrient standards for Florida’s waters. By 2015, almost all the remaining waters in Florida have numeric nutrient standards (see for FDEP Regulation Nutrient Criteria’s for: Streams, spring vents: <https://www.flrules.org/gateway/RuleNo.asp?title=SURFACE%20WATER%20QUALITY%20STANDARDS&ID=62-302.531>).



Figure 1. Map showing nutrient thresholds areas for streams set forth by FDEP.

Table 1. The nutrient thresholds for streams are listed in table below along with the map showing zones.

Nutrient Watershed Region	Total Phosphorus Nutrient Threshold ¹	Total Nitrogen Nutrient Threshold ¹
Panhandle West	60 µg/L	670 µg/L
Panhandle East	180 µg/L	1030 µg/L
North Central	300 µg/L	1870 µg/L
Peninsular	120 µg/L	1540 µg/L
West Central	490 µg/L	1650 µg/L
South Florida	No numeric nutrient threshold. The narrative criterion in paragraph 62-302.530(47)(b), F.A.C., applies.	No numeric nutrient threshold. The narrative criterion in paragraph 62-302.530(47)(b), F.A.C., applies.

¹These values are annual geometric mean concentrations not to be exceeded more than once in any three calendar year periods.

Base File Data for River/Streams: Definitions

- **County:** Name of county in which the system resides.
- **Name:** Stream name that LAKEWATCH uses for the system.
- **GNIS Number:** Number created by USGS's Geographic Names Information System.
- **Water Body Type:** Four different types of systems; lakes, estuaries, river/streams and springs.
- **Period of Record (years):** Number of years a system has been in the LAKEWATCH program.
- **Latitude and Longitude:** Coordinates identifying the exact location of station 1 for each system.

Table 2. Base File Data.

County	Alachua
Name	Blues Creek-2
GNIS Number	279084
Water Body Type	River/Stream
Period of Record (years, range)	12 (2009 to 2021)
Latitude	29.7203
Longitude	-82.4221

Long-Term Data for River/Streams: Definitions

The following long-term data are the primary trophic state parameters collected by LAKEWATCH volunteers and classification variables color and specific conductance (LAKEWATCH recently began analyzing samples quarterly for color and specific conductance):

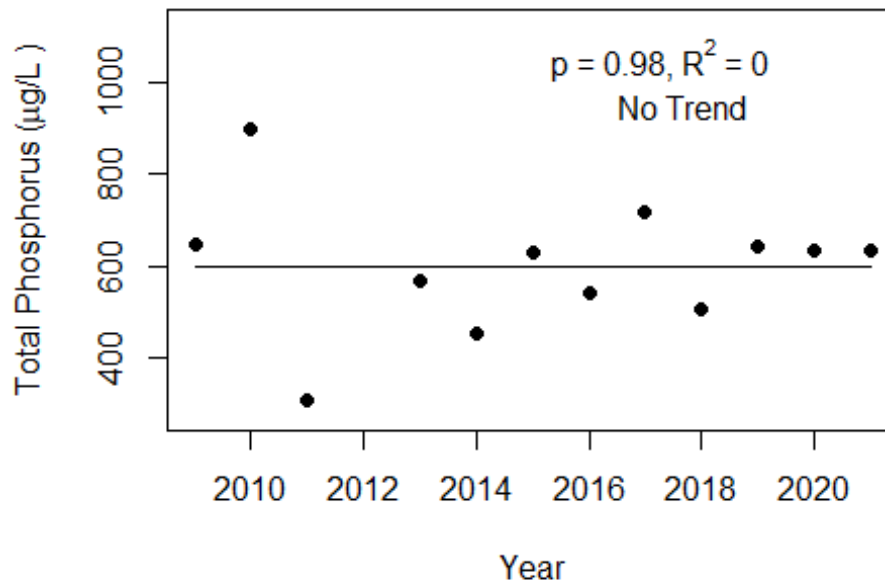
- **Total Phosphorus ($\mu\text{g/L}$):** The nutrient most often limiting growth of plant/algae.
- **Total Nitrogen ($\mu\text{g/L}$):** Another nutrient needed for aquatic plant/algae growth but only limiting when nitrogen to phosphorus ratios are generally less than 10.
- **Chlorophyll-uncorrected ($\mu\text{g/L}$):** Chlorophyll concentrations are used to measure relative abundances of open water algal population.
- **Secchi (ft), Secchi (m):** Secchi measurements are estimates of water clarity.
- **Color (Pt-Co Units):** LAKEWATCH measures true color, which is the color of the water after particles have been filter out.
- **Specific Conductance ($\mu\text{S/cm@25}^\circ\text{C}$):** Measurement of the ability of water to conduct electricity and can be used to estimate the amount of dissolved materials in water.

Table 3. Long-term trophic state data collected monthly by LAKEWATCH volunteers and color and specific conductance (collected quarterly).

Parameter	Minimum and Maximum Annual Geometric Means	Grand Geometric Mean (Sampling years)
Total Phosphorus ($\mu\text{g/L}$)	308 - 898	580 (12)
Total Nitrogen ($\mu\text{g/L}$)	687 - 1929	1142 (12)
Chlorophyll- uncorrected ($\mu\text{g/L}$)	1 - 3	1 (12)
Secchi (ft)	1 - 1	1 (1)
Secchi (m)	0.3 -0.3	0.3 (1)
Color (Pt-Co Units)	176 - 397	257 (12)
Specific Conductance ($\mu\text{S/cm@25 C}$)	93 - 166	128 (12)

Figure 2 and Figure 3. Trend plots of annual average total phosphorus and annual average total nitrogen versus year. The R^2 value indicates the strength of the relations (ranges from 0.0 to 1.0; higher the R^2 the stronger the relation) and the p value indicates if the relation is significant ($p < 0.05$ is significant). Trend status are reported on the plots.

Blues Creek-2 (Alachua)



Blues Creek-2 (Alachua)

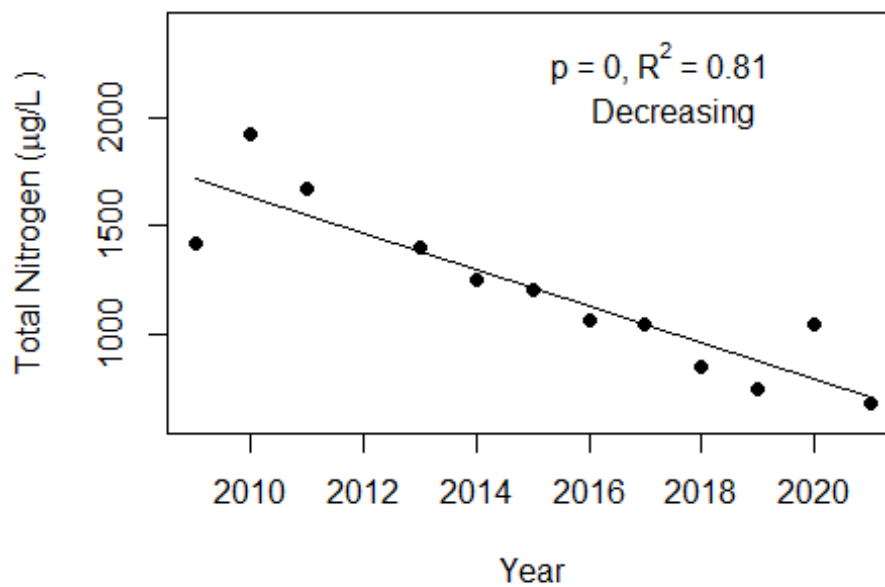
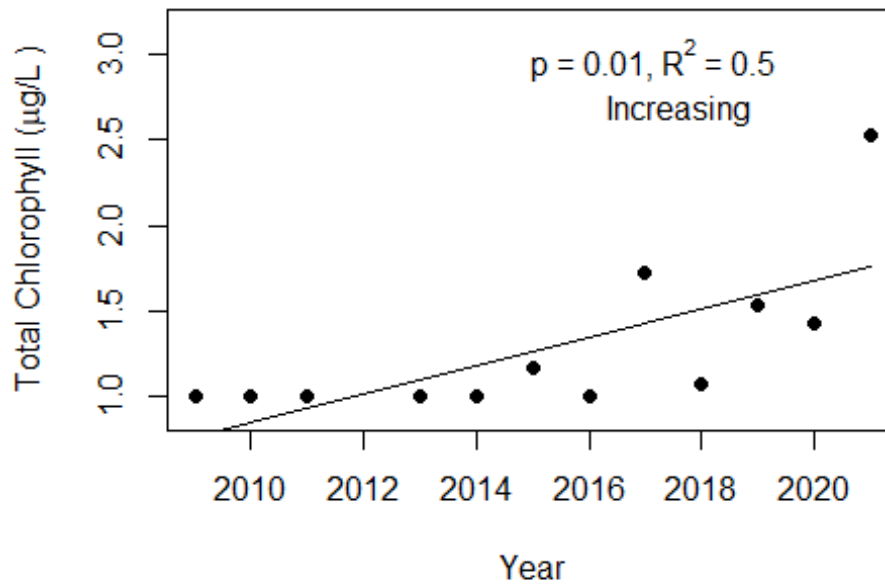
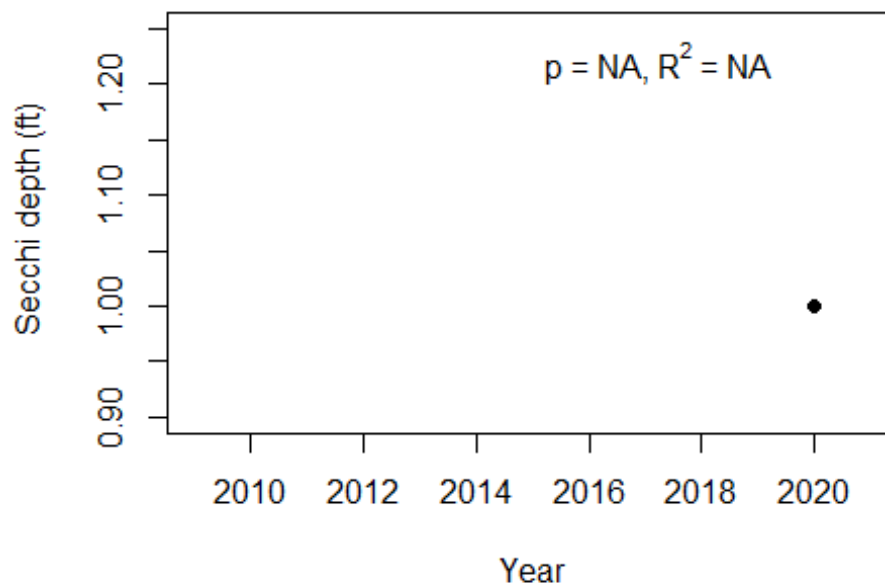


Figure 4 and Figure 5. Trend plots of annual average chlorophyll and annual average Secchi versus year. The R^2 value indicates the strength of the relations (ranges from 0.0 to 1.0; higher the R^2 the stronger the relations and the p value indicates if the relation is significant ($p < 0.05$ is significant). Trend status are reported on plots.

Blues Creek-2 (Alachua)



Blues Creek-2 (Alachua)



LAKEWATCH Report for Blues Creek-3 in Alachua County
Watershed Region: North Central
Using Data Downloaded 1/31/22

Introduction for River/Streams

This report summarizes data collected on systems that have been part of the LAKEWATCH program. Data are from the period of record for individual systems. The first part of this summary lists background data for each system, the second part lists the long-term data geometric means and ranges and the final part are the trend plots for nutrients, chlorophyll, and Secchi depth. **Plots were only made for systems with five or more years of data.**

For decades Florida has had a narrative nutrient water quality criterion in place to protect Florida’s waters against nutrient over-enrichment. In 2009, the Florida Department of Environmental Protection (FDEP) initiated rulemaking and, by 2011, adopted what would be the first set of statewide numeric nutrient standards for Florida’s waters. By 2015, almost all the remaining waters in Florida have numeric nutrient standards (see for FDEP Regulation Nutrient Criteria’s for: Streams, spring vents:

<https://www.flrules.org/gateway/RuleNo.asp?title=SURFACE%20WATER%20QUALITY%20STANDARDS&ID=62-302.531>).



Figure 1. Map showing nutrient thresholds areas for streams set forth by FDEP.

Table 1. The nutrient thresholds for streams are listed in table below along with the map showing zones.

Nutrient Watershed Region	Total Phosphorus Nutrient Threshold ¹	Total Nitrogen Nutrient Threshold ¹
Panhandle West	60 µg/L	670 µg/L
Panhandle East	180 µg/L	1030 µg/L
North Central	300 µg/L	1870 µg/L
Peninsular	120 µg/L	1540 µg/L
West Central	490 µg/L	1650 µg/L
South Florida	No numeric nutrient threshold. The narrative criterion in paragraph 62-302.530(47)(b), F.A.C., applies.	No numeric nutrient threshold. The narrative criterion in paragraph 62-302.530(47)(b), F.A.C., applies.

¹These values are annual geometric mean concentrations not to be exceeded more than once in any three calendar year periods.

Base File Data for River/Streams: Definitions

- **County:** Name of county in which the system resides.
- **Name:** Stream name that LAKEWATCH uses for the system.
- **GNIS Number:** Number created by USGS's Geographic Names Information System.
- **Water Body Type:** Four different types of systems; lakes, estuaries, river/streams and springs.
- **Period of Record (years):** Number of years a system has been in the LAKEWATCH program.
- **Latitude and Longitude:** Coordinates identifying the exact location of station 1 for each system.

Table 2. Base File Data.

County	Alachua
Name	Blues Creek-3
GNIS Number	279084
Water Body Type	River/Stream
Period of Record (years, range)	12 (2009 to 2021)
Latitude	29.7269
Longitude	-82.4219

Long-Term Data for River/Streams: Definitions

The following long-term data are the primary trophic state parameters collected by LAKEWATCH volunteers and classification variables color and specific conductance (LAKEWATCH recently began analyzing samples quarterly for color and specific conductance):

- **Total Phosphorus ($\mu\text{g/L}$):** The nutrient most often limiting growth of plant/algae.
- **Total Nitrogen ($\mu\text{g/L}$):** Another nutrient needed for aquatic plant/algae growth but only limiting when nitrogen to phosphorus ratios are generally less than 10.
- **Chlorophyll-uncorrected ($\mu\text{g/L}$):** Chlorophyll concentrations are used to measure relative abundances of open water algal population.
- **Secchi (ft), Secchi (m):** Secchi measurements are estimates of water clarity.
- **Color (Pt-Co Units):** LAKEWATCH measures true color, which is the color of the water after particles have been filter out.
- **Specific Conductance ($\mu\text{S/cm@25}^\circ\text{C}$):** Measurement of the ability of water to conduct electricity and can be used to estimate the amount of dissolved materials in water.

Table 3. Long-term trophic state data collected monthly by LAKEWATCH volunteers and color and specific conductance (collected quarterly).

Parameter	Minimum and Maximum Annual Geometric Means	Grand Geometric Mean (Sampling years)
Total Phosphorus ($\mu\text{g/L}$)	250 - 787	501 (12)
Total Nitrogen ($\mu\text{g/L}$)	283 - 1459	809 (12)
Chlorophyll- uncorrected ($\mu\text{g/L}$)	1 - 3	1 (12)
Secchi (ft)	-	(0)
Secchi (m)	-	(0)
Color (Pt-Co Units)	12 - 371	122 (12)
Specific Conductance ($\mu\text{S/cm@25 C}$)	107 - 242	156 (12)

Figure 2 and Figure 3. Trend plots of annual average total phosphorus and annual average total nitrogen versus year. The R^2 value indicates the strength of the relations (ranges from 0.0 to 1.0; higher the R^2 the stronger the relation) and the p value indicates if the relation is significant ($p < 0.05$ is significant). Trend status are reported on the plots.

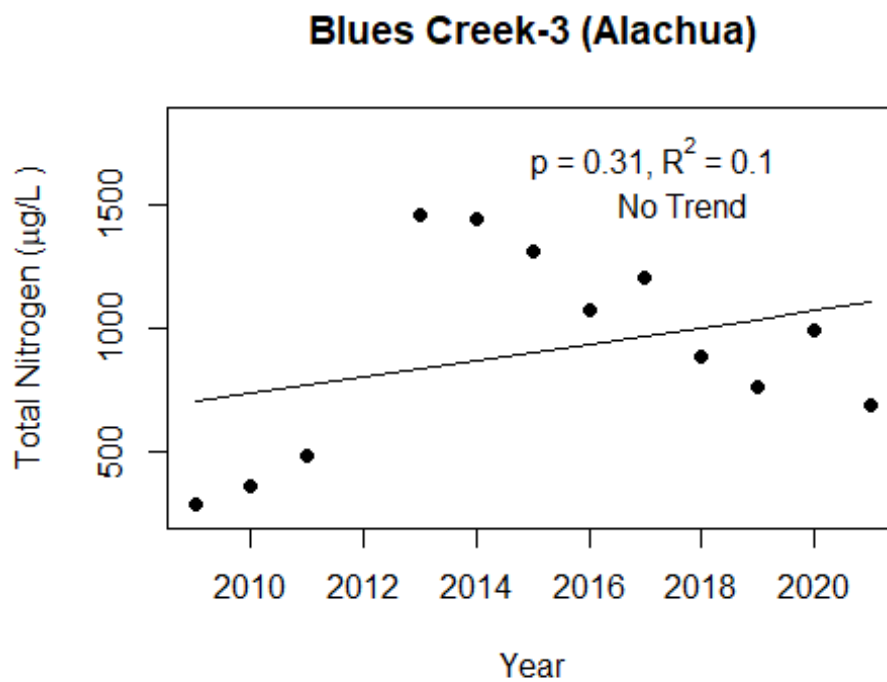
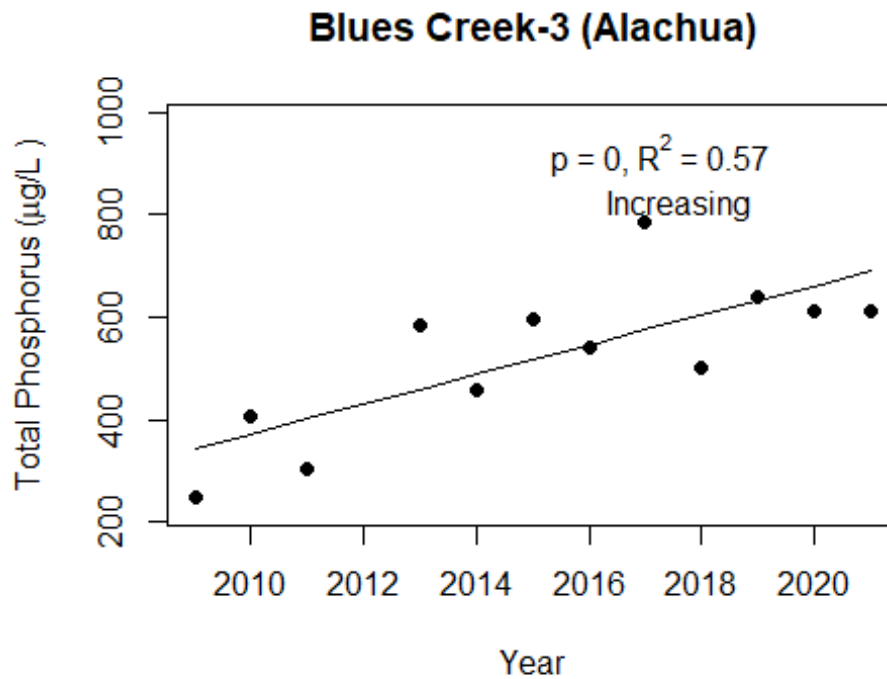
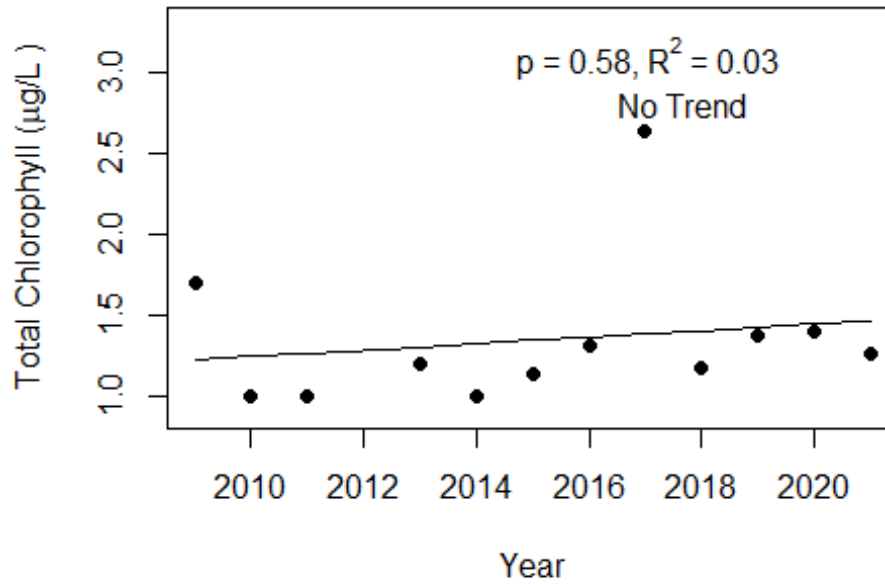
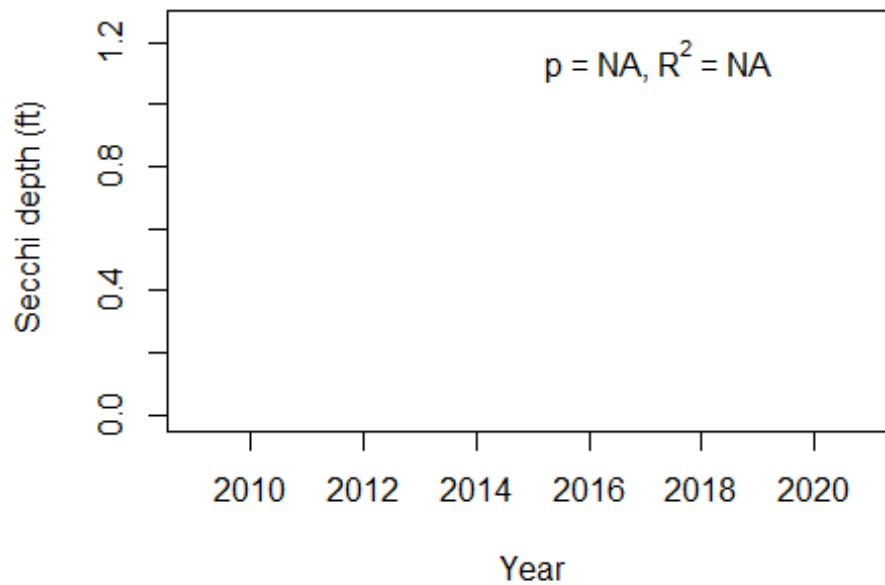


Figure 4 and Figure 5. Trend plots of annual average chlorophyll and annual average Secchi versus year. The R^2 value indicates the strength of the relations (ranges from 0.0 to 1.0; higher the R^2 the stronger the relations and the p value indicates if the relation is significant ($p < 0.05$ is significant). Trend status are reported on plots.

Blues Creek-3 (Alachua)



Blues Creek-3 (Alachua)



LAKEWATCH Report for Cellon Creek-1 in Alachua County
Watershed Region: North Central
Using Data Downloaded 1/31/22

Introduction for River/Streams

This report summarizes data collected on systems that have been part of the LAKEWATCH program. Data are from the period of record for individual systems. The first part of this summary lists background data for each system, the second part lists the long-term data geometric means and ranges and the final part are the trend plots for nutrients, chlorophyll, and Secchi depth. **Plots were only made for systems with five or more years of data.**

For decades Florida has had a narrative nutrient water quality criterion in place to protect Florida’s waters against nutrient over-enrichment. In 2009, the Florida Department of Environmental Protection (FDEP) initiated rulemaking and, by 2011, adopted what would be the first set of statewide numeric nutrient standards for Florida’s waters. By 2015, almost all the remaining waters in Florida have numeric nutrient standards (see for FDEP Regulation Nutrient Criteria’s for: Streams, spring vents:

<https://www.flrules.org/gateway/RuleNo.asp?title=SURFACE%20WATER%20QUALITY%20STANDARDS&ID=62-302.531>).



Figure 1. Map showing nutrient thresholds areas for streams set forth by FDEP.

Table 1. The nutrient thresholds for streams are listed in table below along with the map showing zones.

Nutrient Watershed Region	Total Phosphorus Nutrient Threshold ¹	Total Nitrogen Nutrient Threshold ¹
Panhandle West	60 µg/L	670 µg/L
Panhandle East	180 µg/L	1030 µg/L
North Central	300 µg/L	1870 µg/L
Peninsular	120 µg/L	1540 µg/L
West Central	490 µg/L	1650 µg/L
South Florida	No numeric nutrient threshold. The narrative criterion in paragraph 62-302.530(47)(b), F.A.C., applies.	No numeric nutrient threshold. The narrative criterion in paragraph 62-302.530(47)(b), F.A.C., applies.

¹These values are annual geometric mean concentrations not to be exceeded more than once in any three calendar year periods.

Base File Data for River/Streams: Definitions

- **County:** Name of county in which the system resides.
- **Name:** Stream name that LAKEWATCH uses for the system.
- **GNIS Number:** Number created by USGS's Geographic Names Information System.
- **Water Body Type:** Four different types of systems; lakes, estuaries, river/streams and springs.
- **Period of Record (years):** Number of years a system has been in the LAKEWATCH program.
- **Latitude and Longitude:** Coordinates identifying the exact location of station 1 for each system.

Table 2. Base File Data.

County	Alachua
Name	Cellon Creek-1
GNIS Number	
Water Body Type	River/Stream
Period of Record (years, range)	14 (2008 to 2021)
Latitude	29.7746
Longitude	-82.4731

Long-Term Data for River/Streams: Definitions

The following long-term data are the primary trophic state parameters collected by LAKEWATCH volunteers and classification variables color and specific conductance (LAKEWATCH recently began analyzing samples quarterly for color and specific conductance):

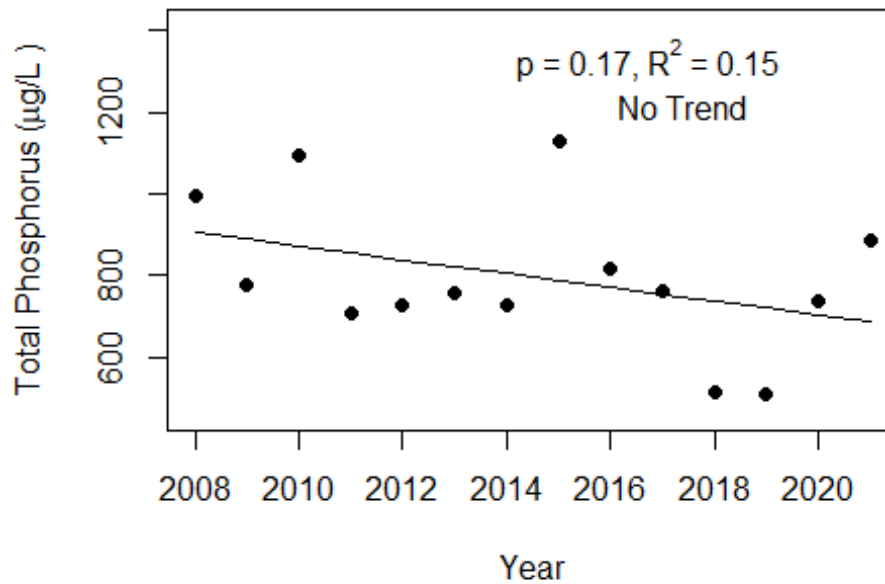
- **Total Phosphorus ($\mu\text{g/L}$):** The nutrient most often limiting growth of plant/algae.
- **Total Nitrogen ($\mu\text{g/L}$):** Another nutrient needed for aquatic plant/algae growth but only limiting when nitrogen to phosphorus ratios are generally less than 10.
- **Chlorophyll-uncorrected ($\mu\text{g/L}$):** Chlorophyll concentrations are used to measure relative abundances of open water algal population.
- **Secchi (ft), Secchi (m):** Secchi measurements are estimates of water clarity.
- **Color (Pt-Co Units):** LAKEWATCH measures true color, which is the color of the water after particles have been filter out.
- **Specific Conductance ($\mu\text{S/cm@25}^\circ\text{C}$):** Measurement of the ability of water to conduct electricity and can be used to estimate the amount of dissolved materials in water.

Table 3. Long-term trophic state data collected monthly by LAKEWATCH volunteers and color and specific conductance (collected quarterly).

Parameter	Minimum and Maximum Annual Geometric Means	Grand Geometric Mean (Sampling years)
Total Phosphorus ($\mu\text{g/L}$)	511 - 1130	777 (14)
Total Nitrogen ($\mu\text{g/L}$)	1197 - 1940	1472 (14)
Chlorophyll- uncorrected ($\mu\text{g/L}$)	2 - 45	13 (14)
Secchi (ft)	1 - 1	1 (1)
Secchi (m)	0.3 -0.3	0.3 (1)
Color (Pt-Co Units)	72 - 193	113 (14)
Specific Conductance ($\mu\text{S/cm@25 C}$)	158 - 328	235 (14)

Figure 2 and Figure 3. Trend plots of annual average total phosphorus and annual average total nitrogen versus year. The R^2 value indicates the strength of the relations (ranges from 0.0 to 1.0; higher the R^2 the stronger the relation) and the p value indicates if the relation is significant ($p < 0.05$ is significant). Trend status are reported on the plots.

Cellon Creek-1 (Alachua)



Cellon Creek-1 (Alachua)

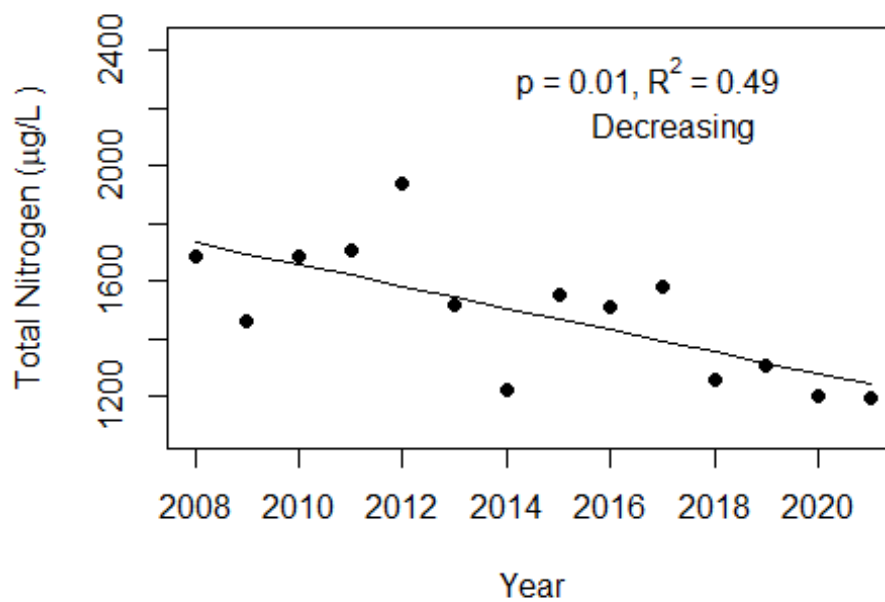
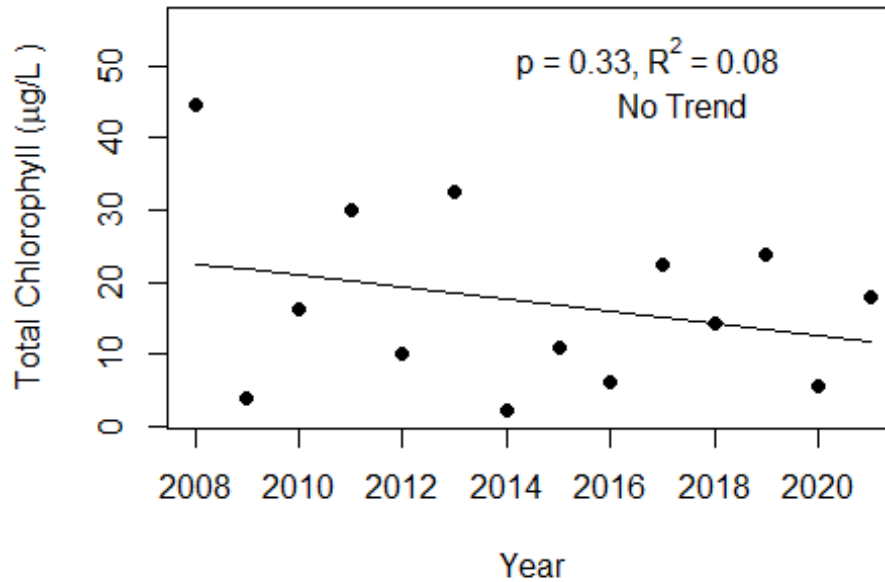
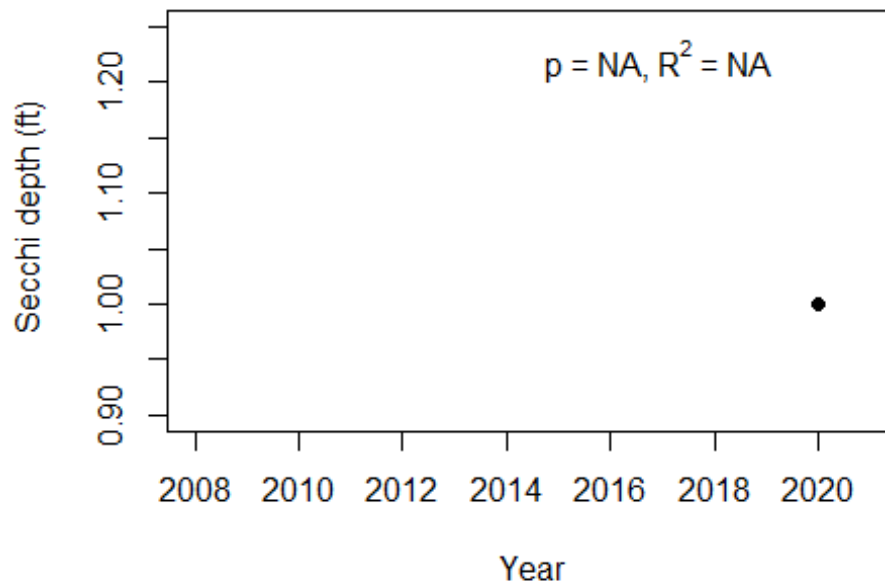


Figure 4 and Figure 5. Trend plots of annual average chlorophyll and annual average Secchi versus year. The R^2 value indicates the strength of the relations (ranges from 0.0 to 1.0; higher the R^2 the stronger the relations and the p value indicates if the relation is significant ($p < 0.05$ is significant). Trend status are reported on plots.

Cellon Creek-1 (Alachua)



Cellon Creek-1 (Alachua)



LAKEWATCH Report for Cellon Creek-2 in Alachua County
Watershed Region: North Central
Using Data Downloaded 1/31/22

Introduction for River/Streams

This report summarizes data collected on systems that have been part of the LAKEWATCH program. Data are from the period of record for individual systems. The first part of this summary lists background data for each system, the second part lists the long-term data geometric means and ranges and the final part are the trend plots for nutrients, chlorophyll, and Secchi depth. **Plots were only made for systems with five or more years of data.**

For decades Florida has had a narrative nutrient water quality criterion in place to protect Florida’s waters against nutrient over-enrichment. In 2009, the Florida Department of Environmental Protection (FDEP) initiated rulemaking and, by 2011, adopted what would be the first set of statewide numeric nutrient standards for Florida’s waters. By 2015, almost all the remaining waters in Florida have numeric nutrient standards (see for FDEP Regulation Nutrient Criteria’s for: Streams, spring vents:

<https://www.flrules.org/gateway/RuleNo.asp?title=SURFACE%20WATER%20QUALITY%20STANDARDS&ID=62-302.531>).



Figure 1. Map showing nutrient thresholds areas for streams set forth by FDEP.

Table 1. The nutrient thresholds for streams are listed in table below along with the map showing zones.

Nutrient Watershed Region	Total Phosphorus Nutrient Threshold ¹	Total Nitrogen Nutrient Threshold ¹
Panhandle West	60 µg/L	670 µg/L
Panhandle East	180 µg/L	1030 µg/L
North Central	300 µg/L	1870 µg/L
Peninsular	120 µg/L	1540 µg/L
West Central	490 µg/L	1650 µg/L
South Florida	No numeric nutrient threshold. The narrative criterion in paragraph 62-302.530(47)(b), F.A.C., applies.	No numeric nutrient threshold. The narrative criterion in paragraph 62-302.530(47)(b), F.A.C., applies.

¹These values are annual geometric mean concentrations not to be exceeded more than once in any three calendar year periods.

Base File Data for River/Streams: Definitions

- **County:** Name of county in which the system resides.
- **Name:** Stream name that LAKEWATCH uses for the system.
- **GNIS Number:** Number created by USGS's Geographic Names Information System.
- **Water Body Type:** Four different types of systems; lakes, estuaries, river/streams and springs.
- **Period of Record (years):** Number of years a system has been in the LAKEWATCH program.
- **Latitude and Longitude:** Coordinates identifying the exact location of station 1 for each system.

Table 2. Base File Data.

County	Alachua
Name	Cellon Creek-2
GNIS Number	
Water Body Type	River/Stream
Period of Record (years, range)	14 (2008 to 2021)
Latitude	29.7691
Longitude	-82.4549

Long-Term Data for River/Streams: Definitions

The following long-term data are the primary trophic state parameters collected by LAKEWATCH volunteers and classification variables color and specific conductance (LAKEWATCH recently began analyzing samples quarterly for color and specific conductance):

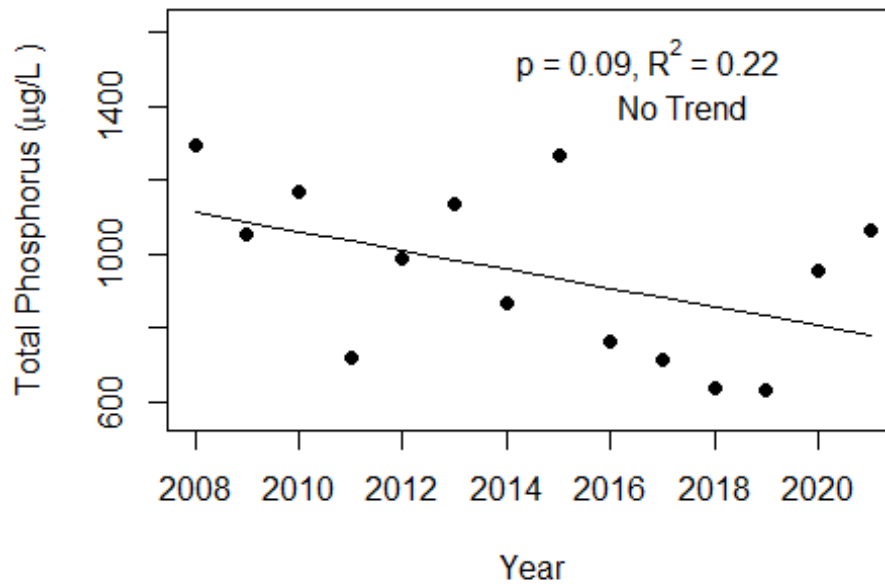
- **Total Phosphorus ($\mu\text{g/L}$):** The nutrient most often limiting growth of plant/algae.
- **Total Nitrogen ($\mu\text{g/L}$):** Another nutrient needed for aquatic plant/algae growth but only limiting when nitrogen to phosphorus ratios are generally less than 10.
- **Chlorophyll-uncorrected ($\mu\text{g/L}$):** Chlorophyll concentrations are used to measure relative abundances of open water algal population.
- **Secchi (ft), Secchi (m):** Secchi measurements are estimates of water clarity.
- **Color (Pt-Co Units):** LAKEWATCH measures true color, which is the color of the water after particles have been filter out.
- **Specific Conductance ($\mu\text{S/cm@25}^\circ\text{C}$):** Measurement of the ability of water to conduct electricity and can be used to estimate the amount of dissolved materials in water.

Table 3. Long-term trophic state data collected monthly by LAKEWATCH volunteers and color and specific conductance (collected quarterly).

Parameter	Minimum and Maximum Annual Geometric Means	Grand Geometric Mean (Sampling years)
Total Phosphorus ($\mu\text{g/L}$)	629 - 1294	919 (14)
Total Nitrogen ($\mu\text{g/L}$)	791 - 1700	1214 (14)
Chlorophyll- uncorrected ($\mu\text{g/L}$)	2 - 29	5 (14)
Secchi (ft)	1 - 1	1 (1)
Secchi (m)	0.3 -0.3	0.3 (1)
Color (Pt-Co Units)	63 - 128	94 (14)
Specific Conductance ($\mu\text{S/cm@25 C}$)	188 - 342	273 (14)

Figure 2 and Figure 3. Trend plots of annual average total phosphorus and annual average total nitrogen versus year. The R^2 value indicates the strength of the relations (ranges from 0.0 to 1.0; higher the R^2 the stronger the relation) and the p value indicates if the relation is significant ($p < 0.05$ is significant). Trend status are reported on the plots.

Cellon Creek-2 (Alachua)



Cellon Creek-2 (Alachua)

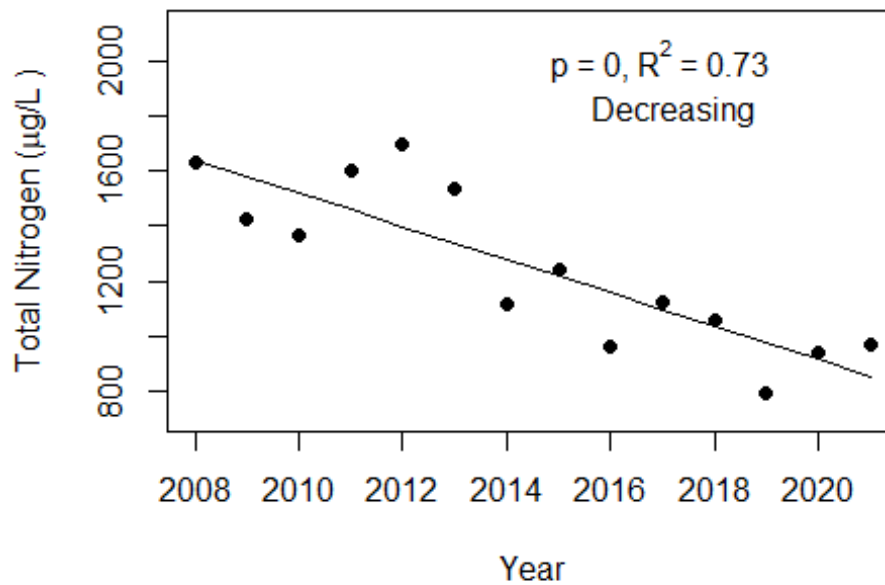
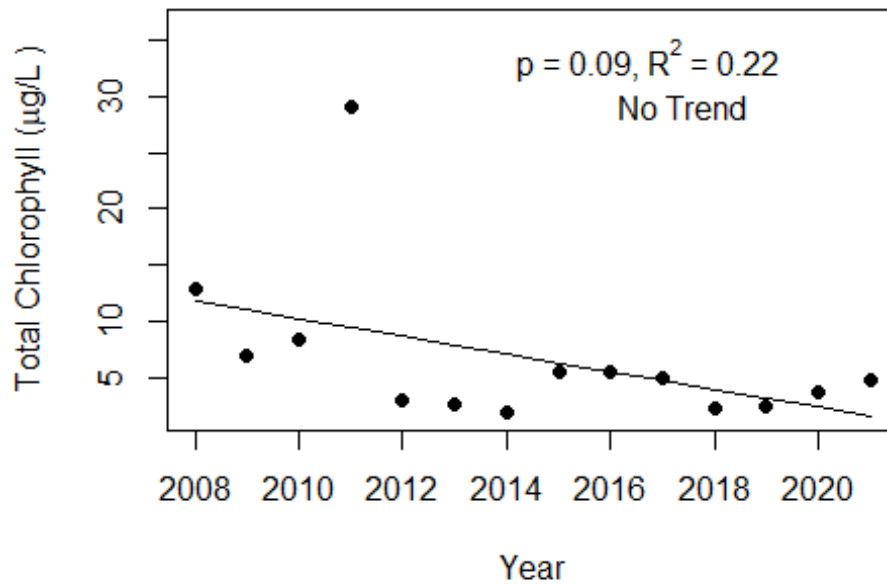
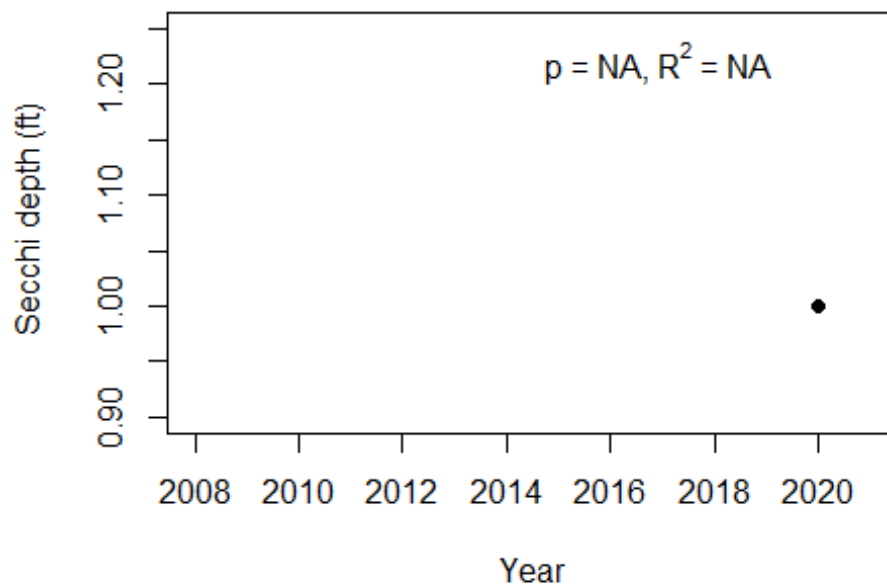


Figure 4 and Figure 5. Trend plots of annual average chlorophyll and annual average Secchi versus year. The R^2 value indicates the strength of the relations (ranges from 0.0 to 1.0; higher the R^2 the stronger the relations and the p value indicates if the relation is significant ($p < 0.05$ is significant). Trend status are reported on plots.

Cellon Creek-2 (Alachua)



Cellon Creek-2 (Alachua)



LAKEWATCH Report for Cellon Creek-3 in Alachua County
Watershed Region: North Central
Using Data Downloaded 1/31/22

Introduction for River/Streams

This report summarizes data collected on systems that have been part of the LAKEWATCH program. Data are from the period of record for individual systems. The first part of this summary lists background data for each system, the second part lists the long-term data geometric means and ranges and the final part are the trend plots for nutrients, chlorophyll, and Secchi depth. **Plots were only made for systems with five or more years of data.**

For decades Florida has had a narrative nutrient water quality criterion in place to protect Florida’s waters against nutrient over-enrichment. In 2009, the Florida Department of Environmental Protection (FDEP) initiated rulemaking and, by 2011, adopted what would be the first set of statewide numeric nutrient standards for Florida’s waters. By 2015, almost all the remaining waters in Florida have numeric nutrient standards (see for FDEP Regulation Nutrient Criteria’s for: Streams, spring vents:

<https://www.flrules.org/gateway/RuleNo.asp?title=SURFACE%20WATER%20QUALITY%20STANDARDS&ID=62-302.531>).



Figure 1. Map showing nutrient thresholds areas for streams set forth by FDEP.

Table 1. The nutrient thresholds for streams are listed in table below along with the map showing zones.

Nutrient Watershed Region	Total Phosphorus Nutrient Threshold ¹	Total Nitrogen Nutrient Threshold ¹
Panhandle West	60 µg/L	670 µg/L
Panhandle East	180 µg/L	1030 µg/L
North Central	300 µg/L	1870 µg/L
Peninsular	120 µg/L	1540 µg/L
West Central	490 µg/L	1650 µg/L
South Florida	No numeric nutrient threshold. The narrative criterion in paragraph 62-302.530(47)(b), F.A.C., applies.	No numeric nutrient threshold. The narrative criterion in paragraph 62-302.530(47)(b), F.A.C., applies.

¹These values are annual geometric mean concentrations not to be exceeded more than once in any three calendar year periods.

Base File Data for River/Streams: Definitions

- **County:** Name of county in which the system resides.
- **Name:** Stream name that LAKEWATCH uses for the system.
- **GNIS Number:** Number created by USGS's Geographic Names Information System.
- **Water Body Type:** Four different types of systems; lakes, estuaries, river/streams and springs.
- **Period of Record (years):** Number of years a system has been in the LAKEWATCH program.
- **Latitude and Longitude:** Coordinates identifying the exact location of station 1 for each system.

Table 2. Base File Data.

County	Alachua
Name	Cellon Creek-3
GNIS Number	
Water Body Type	River/Stream
Period of Record (years, range)	14 (2008 to 2021)
Latitude	29.7686
Longitude	-82.4461

Long-Term Data for River/Streams: Definitions

The following long-term data are the primary trophic state parameters collected by LAKEWATCH volunteers and classification variables color and specific conductance (LAKEWATCH recently began analyzing samples quarterly for color and specific conductance):

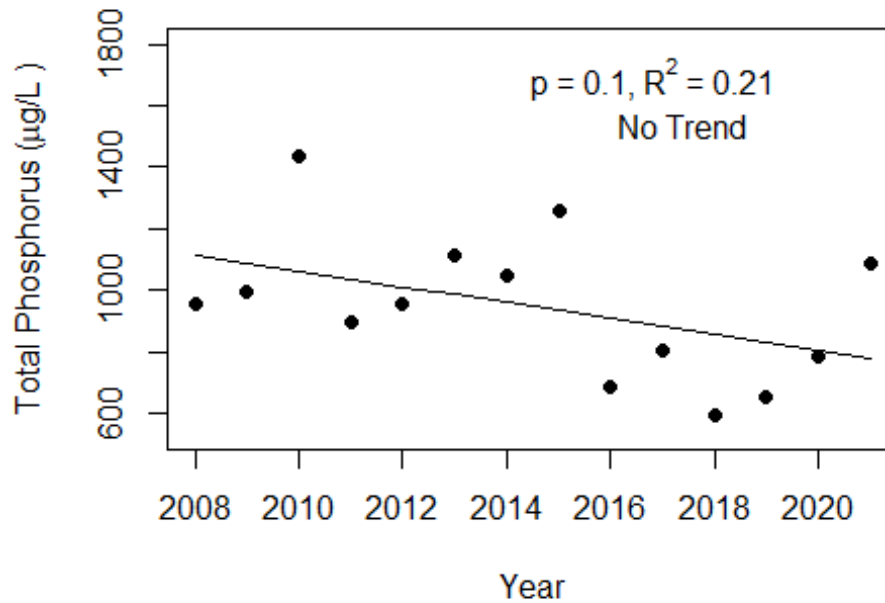
- **Total Phosphorus ($\mu\text{g/L}$):** The nutrient most often limiting growth of plant/algae.
- **Total Nitrogen ($\mu\text{g/L}$):** Another nutrient needed for aquatic plant/algae growth but only limiting when nitrogen to phosphorus ratios are generally less than 10.
- **Chlorophyll-uncorrected ($\mu\text{g/L}$):** Chlorophyll concentrations are used to measure relative abundances of open water algal population.
- **Secchi (ft), Secchi (m):** Secchi measurements are estimates of water clarity.
- **Color (Pt-Co Units):** LAKEWATCH measures true color, which is the color of the water after particles have been filter out.
- **Specific Conductance ($\mu\text{S/cm@25}^\circ\text{C}$):** Measurement of the ability of water to conduct electricity and can be used to estimate the amount of dissolved materials in water.

Table 3. Long-term trophic state data collected monthly by LAKEWATCH volunteers and color and specific conductance (collected quarterly).

Parameter	Minimum and Maximum Annual Geometric Means	Grand Geometric Mean (Sampling years)
Total Phosphorus ($\mu\text{g/L}$)	595 - 1438	920 (14)
Total Nitrogen ($\mu\text{g/L}$)	1010 - 2790	1664 (14)
Chlorophyll- uncorrected ($\mu\text{g/L}$)	1 - 5	2 (14)
Secchi (ft)	-	(0)
Secchi (m)	-	(0)
Color (Pt-Co Units)	29 - 142	63 (13)
Specific Conductance ($\mu\text{S/cm@25 C}$)	265 - 447	333 (13)

Figure 2 and Figure 3. Trend plots of annual average total phosphorus and annual average total nitrogen versus year. The R^2 value indicates the strength of the relations (ranges from 0.0 to 1.0; higher the R^2 the stronger the relation) and the p value indicates if the relation is significant ($p < 0.05$ is significant). Trend status are reported on the plots.

Cellon Creek-3 (Alachua)



Cellon Creek-3 (Alachua)

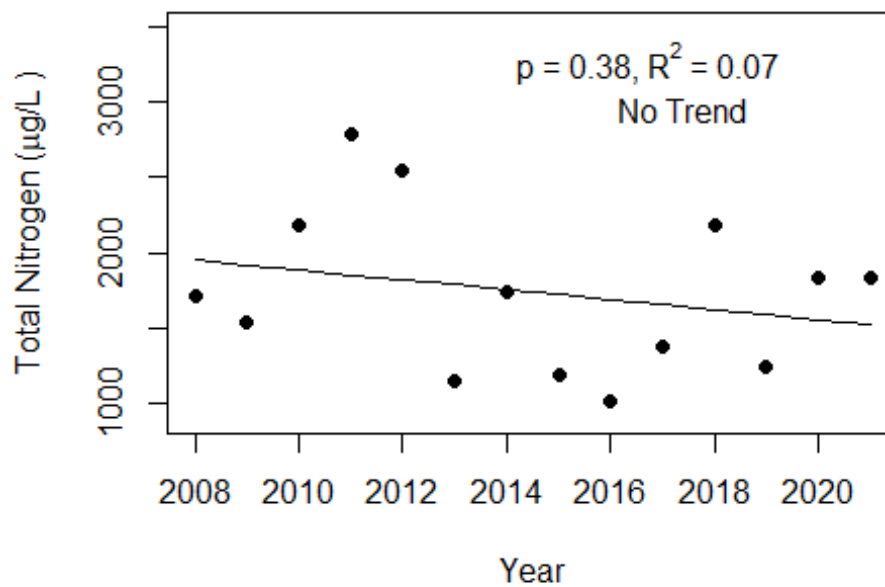
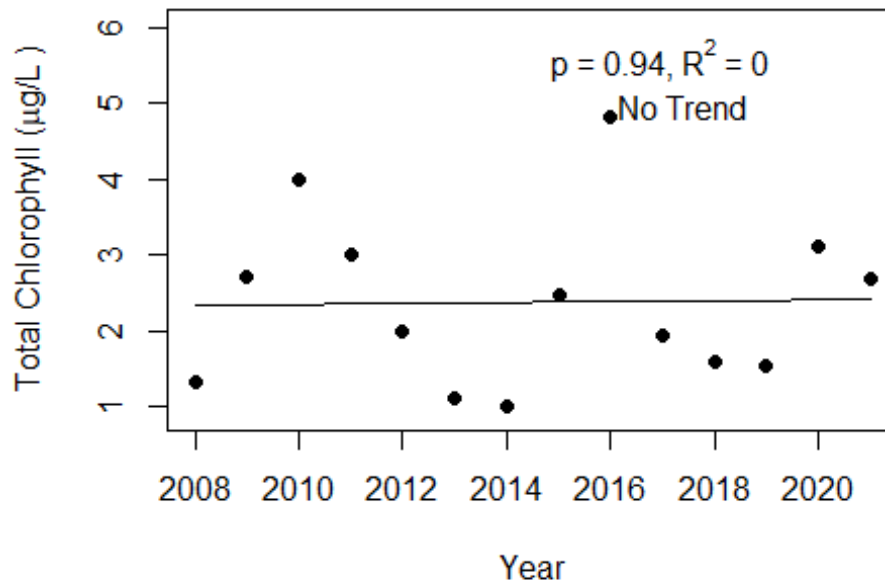
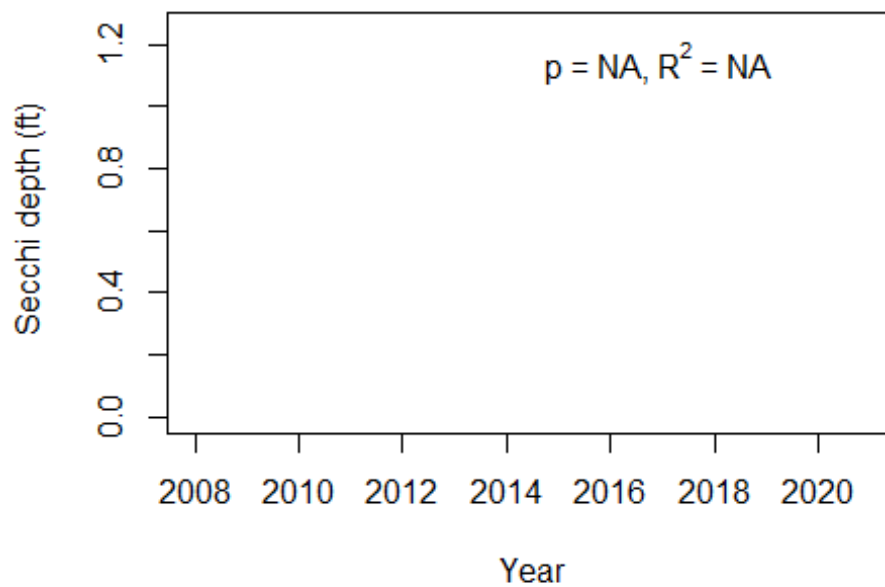


Figure 4 and Figure 5. Trend plots of annual average chlorophyll and annual average Secchi versus year. The R^2 value indicates the strength of the relations (ranges from 0.0 to 1.0; higher the R^2 the stronger the relations and the p value indicates if the relation is significant ($p < 0.05$ is significant). Trend status are reported on plots.

Cellon Creek-3 (Alachua)



Cellon Creek-3 (Alachua)



LAKEWATCH Report for Cellon Creek-4 in Alachua County
Watershed Region: North Central
Using Data Downloaded 1/31/22

Introduction for River/Streams

This report summarizes data collected on systems that have been part of the LAKEWATCH program. Data are from the period of record for individual systems. The first part of this summary lists background data for each system, the second part lists the long-term data geometric means and ranges and the final part are the trend plots for nutrients, chlorophyll, and Secchi depth. **Plots were only made for systems with five or more years of data.**

For decades Florida has had a narrative nutrient water quality criterion in place to protect Florida’s waters against nutrient over-enrichment. In 2009, the Florida Department of Environmental Protection (FDEP) initiated rulemaking and, by 2011, adopted what would be the first set of statewide numeric nutrient standards for Florida’s waters. By 2015, almost all the remaining waters in Florida have numeric nutrient standards (see for FDEP Regulation Nutrient Criteria’s for: Streams, spring vents: <https://www.flrules.org/gateway/RuleNo.asp?title=SURFACE%20WATER%20QUALITY%20STANDARDS&ID=62-302.531>).

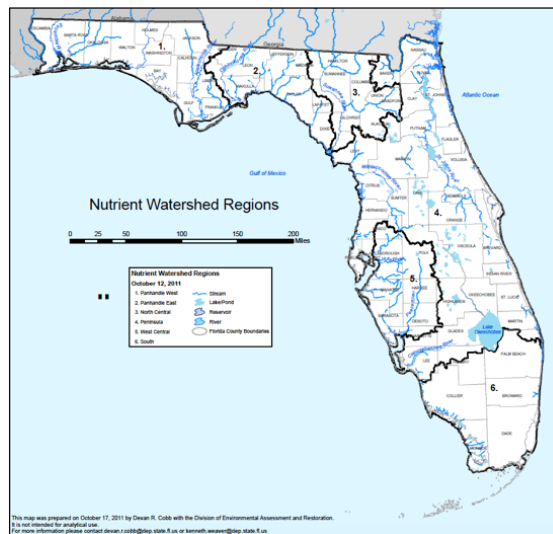


Figure 1. Map showing nutrient thresholds areas for streams set forth by FDEP.

Table 1. The nutrient thresholds for streams are listed in table below along with the map showing zones.

Nutrient Watershed Region	Total Phosphorus Nutrient Threshold ¹	Total Nitrogen Nutrient Threshold ¹
Panhandle West	60 µg/L	670 µg/L
Panhandle East	180 µg/L	1030 µg/L
North Central	300 µg/L	1870 µg/L
Peninsular	120 µg/L	1540 µg/L
West Central	490 µg/L	1650 µg/L
South Florida	No numeric nutrient threshold. The narrative criterion in paragraph 62-302.530(47)(b), F.A.C., applies.	No numeric nutrient threshold. The narrative criterion in paragraph 62-302.530(47)(b), F.A.C., applies.

¹These values are annual geometric mean concentrations not to be exceeded more than once in any three calendar year periods.

Base File Data for River/Streams: Definitions

- **County:** Name of county in which the system resides.
- **Name:** Stream name that LAKEWATCH uses for the system.
- **GNIS Number:** Number created by USGS's Geographic Names Information System.
- **Water Body Type:** Four different types of systems; lakes, estuaries, river/streams and springs.
- **Period of Record (years):** Number of years a system has been in the LAKEWATCH program.
- **Latitude and Longitude:** Coordinates identifying the exact location of station 1 for each system.

Table 2. Base File Data.

County	Alachua
Name	Cellon Creek-4
GNIS Number	
Water Body Type	River/Stream
Period of Record (years, range)	14 (2008 to 2021)
Latitude	29.7703
Longitude	-82.4297

Long-Term Data for River/Streams: Definitions

The following long-term data are the primary trophic state parameters collected by LAKEWATCH volunteers and classification variables color and specific conductance (LAKEWATCH recently began analyzing samples quarterly for color and specific conductance):

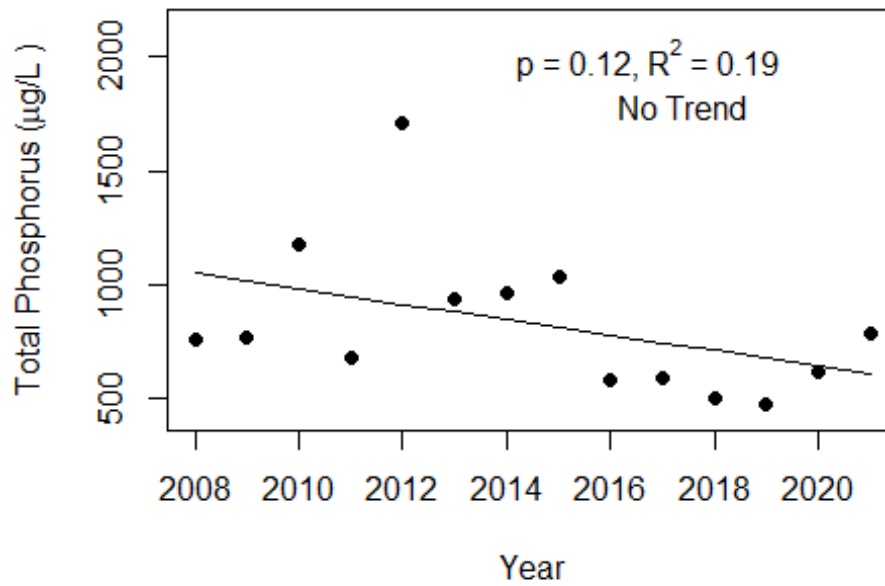
- **Total Phosphorus ($\mu\text{g/L}$):** The nutrient most often limiting growth of plant/algae.
- **Total Nitrogen ($\mu\text{g/L}$):** Another nutrient needed for aquatic plant/algae growth but only limiting when nitrogen to phosphorus ratios are generally less than 10.
- **Chlorophyll-uncorrected ($\mu\text{g/L}$):** Chlorophyll concentrations are used to measure relative abundances of open water algal population.
- **Secchi (ft), Secchi (m):** Secchi measurements are estimates of water clarity.
- **Color (Pt-Co Units):** LAKEWATCH measures true color, which is the color of the water after particles have been filter out.
- **Specific Conductance ($\mu\text{S/cm@25}^\circ\text{C}$):** Measurement of the ability of water to conduct electricity and can be used to estimate the amount of dissolved materials in water.

Table 3. Long-term trophic state data collected monthly by LAKEWATCH volunteers and color and specific conductance (collected quarterly).

Parameter	Minimum and Maximum Annual Geometric Means	Grand Geometric Mean (Sampling years)
Total Phosphorus ($\mu\text{g/L}$)	479 - 1711	779 (14)
Total Nitrogen ($\mu\text{g/L}$)	1869 - 6150	2612 (14)
Chlorophyll- uncorrected ($\mu\text{g/L}$)	1 - 4	2 (14)
Secchi (ft)	-	(0)
Secchi (m)	-	(0)
Color (Pt-Co Units)	21 - 111	48 (12)
Specific Conductance ($\mu\text{S/cm@25 C}$)	308 - 473	385 (12)

Figure 2 and Figure 3. Trend plots of annual average total phosphorus and annual average total nitrogen versus year. The R^2 value indicates the strength of the relations (ranges from 0.0 to 1.0; higher the R^2 the stronger the relation) and the p value indicates if the relation is significant ($p < 0.05$ is significant). Trend status are reported on the plots.

Cellon Creek-4 (Alachua)



Cellon Creek-4 (Alachua)

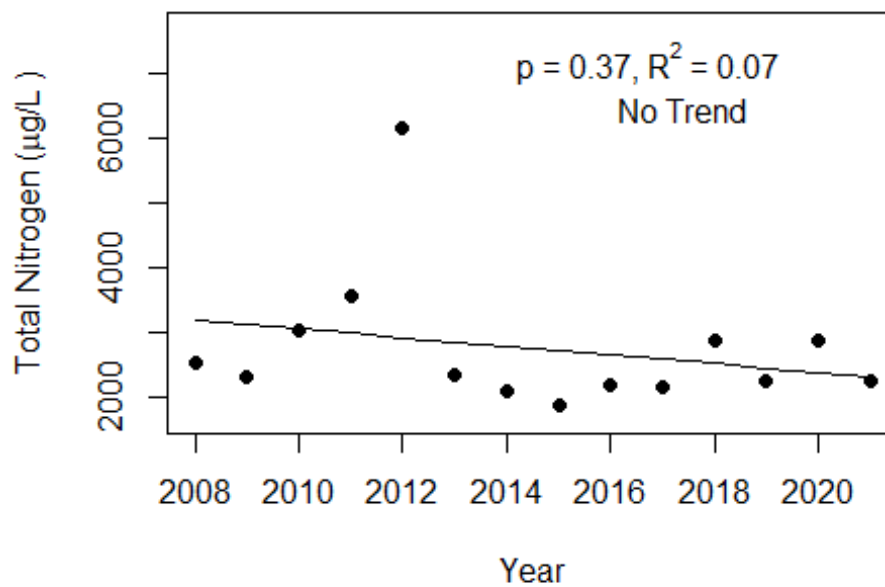
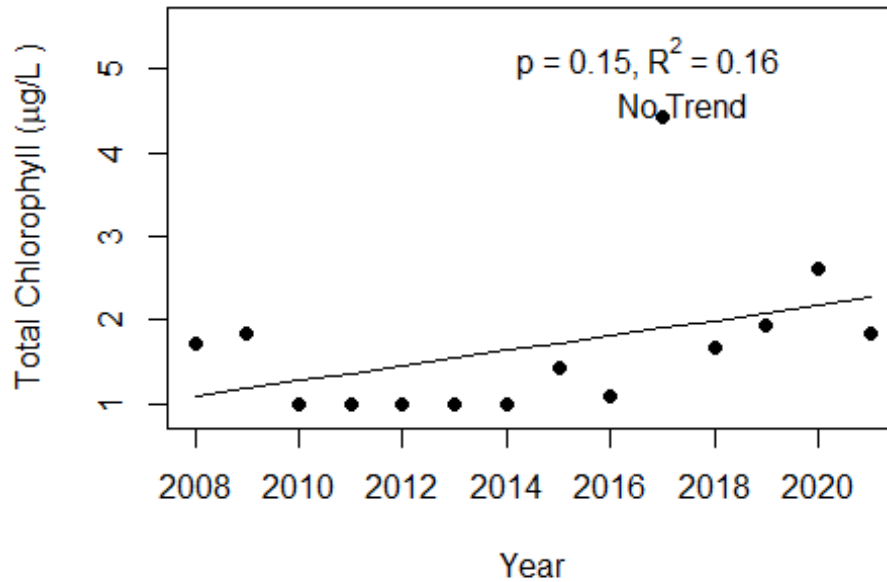
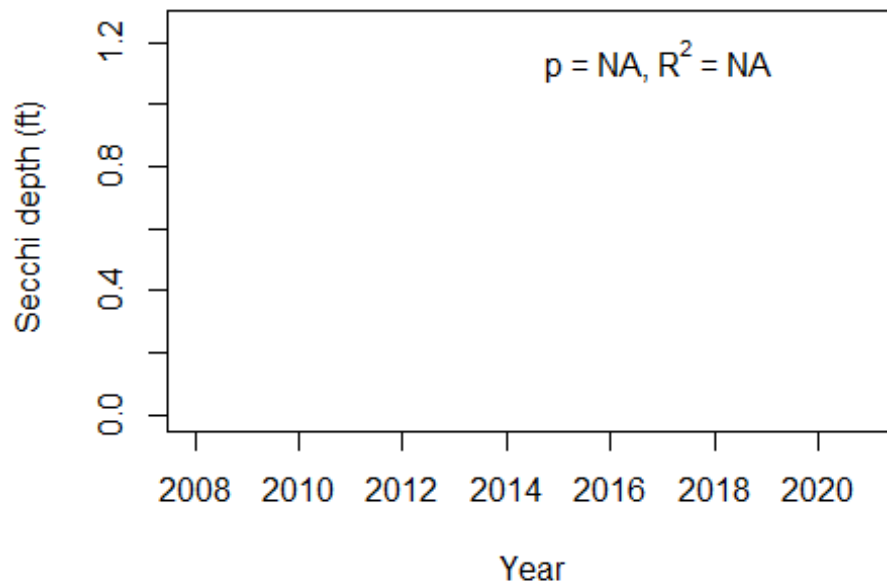


Figure 4 and Figure 5. Trend plots of annual average chlorophyll and annual average Secchi versus year. The R^2 value indicates the strength of the relations (ranges from 0.0 to 1.0; higher the R^2 the stronger the relations and the p value indicates if the relation is significant ($p < 0.05$ is significant). Trend status are reported on plots.

Cellon Creek-4 (Alachua)



Cellon Creek-4 (Alachua)



LAKEWATCH Report for Hogtown Creek-1 in Alachua County
Watershed Region: North Central
Using Data Downloaded 1/31/22

Introduction for River/Streams

This report summarizes data collected on systems that have been part of the LAKEWATCH program. Data are from the period of record for individual systems. The first part of this summary lists background data for each system, the second part lists the long-term data geometric means and ranges and the final part are the trend plots for nutrients, chlorophyll, and Secchi depth. **Plots were only made for systems with five or more years of data.**

For decades Florida has had a narrative nutrient water quality criterion in place to protect Florida’s waters against nutrient over-enrichment. In 2009, the Florida Department of Environmental Protection (FDEP) initiated rulemaking and, by 2011, adopted what would be the first set of statewide numeric nutrient standards for Florida’s waters. By 2015, almost all the remaining waters in Florida have numeric nutrient standards (see for FDEP Regulation Nutrient Criteria’s for: Streams, spring vents:

<https://www.flrules.org/gateway/RuleNo.asp?title=SURFACE%20WATER%20QUALITY%20STANDARDS&ID=62-302.531>).



Figure 1. Map showing nutrient thresholds areas for streams set forth by FDEP.

Table 1. The nutrient thresholds for streams are listed in table below along with the map showing zones.

Nutrient Watershed Region	Total Phosphorus Nutrient Threshold ¹	Total Nitrogen Nutrient Threshold ¹
Panhandle West	60 µg/L	670 µg/L
Panhandle East	180 µg/L	1030 µg/L
North Central	300 µg/L	1870 µg/L
Peninsular	120 µg/L	1540 µg/L
West Central	490 µg/L	1650 µg/L
South Florida	No numeric nutrient threshold. The narrative criterion in paragraph 62-302.530(47)(b), F.A.C., applies.	No numeric nutrient threshold. The narrative criterion in paragraph 62-302.530(47)(b), F.A.C., applies.

¹These values are annual geometric mean concentrations not to be exceeded more than once in any three calendar year periods.

Base File Data for River/Streams: Definitions

- **County:** Name of county in which the system resides.
- **Name:** Stream name that LAKEWATCH uses for the system.
- **GNIS Number:** Number created by USGS's Geographic Names Information System.
- **Water Body Type:** Four different types of systems; lakes, estuaries, river/streams and springs.
- **Period of Record (years):** Number of years a system has been in the LAKEWATCH program.
- **Latitude and Longitude:** Coordinates identifying the exact location of station 1 for each system.

Table 2. Base File Data.

County	Alachua
Name	Hogtown Creek-1
GNIS Number	
Water Body Type	River/Stream
Period of Record (years, range)	1 (2021 to 2021)
Latitude	29.6718
Longitude	-82.346

Long-Term Data for River/Streams: Definitions

The following long-term data are the primary trophic state parameters collected by LAKEWATCH volunteers and classification variables color and specific conductance (LAKEWATCH recently began analyzing samples quarterly for color and specific conductance):

- **Total Phosphorus ($\mu\text{g/L}$):** The nutrient most often limiting growth of plant/algae.
- **Total Nitrogen ($\mu\text{g/L}$):** Another nutrient needed for aquatic plant/algae growth but only limiting when nitrogen to phosphorus ratios are generally less than 10.
- **Chlorophyll-uncorrected ($\mu\text{g/L}$):** Chlorophyll concentrations are used to measure relative abundances of open water algal population.
- **Secchi (ft), Secchi (m):** Secchi measurements are estimates of water clarity.
- **Color (Pt-Co Units):** LAKEWATCH measures true color, which is the color of the water after particles have been filter out.
- **Specific Conductance ($\mu\text{S/cm@25}^\circ\text{C}$):** Measurement of the ability of water to conduct electricity and can be used to estimate the amount of dissolved materials in water.

Table 3. Long-term trophic state data collected monthly by LAKEWATCH volunteers and color and specific conductance (collected quarterly).

Parameter	Minimum and Maximum Annual Geometric Means	Grand Geometric Mean (Sampling years)
Total Phosphorus ($\mu\text{g/L}$)	315 - 315	315 (1)
Total Nitrogen ($\mu\text{g/L}$)	763 - 763	763 (1)
Chlorophyll- uncorrected ($\mu\text{g/L}$)	2 - 2	2 (1)
Secchi (ft)	0.4 - 0.4	0.4 (1)
Secchi (m)	0.1 -0.1	0.1 (1)
Color (Pt-Co Units)	132 - 132	132 (1)
Specific Conductance ($\mu\text{S/cm@25 C}$)	180 - 180	180 (1)

LAKEWATCH Report for Paroners Branch-1 in Alachua County
Watershed Region: North Central
Using Data Downloaded 1/31/22

Introduction for River/Streams

This report summarizes data collected on systems that have been part of the LAKEWATCH program. Data are from the period of record for individual systems. The first part of this summary lists background data for each system, the second part lists the long-term data geometric means and ranges and the final part are the trend plots for nutrients, chlorophyll, and Secchi depth. **Plots were only made for systems with five or more years of data.**

For decades Florida has had a narrative nutrient water quality criterion in place to protect Florida’s waters against nutrient over-enrichment. In 2009, the Florida Department of Environmental Protection (FDEP) initiated rulemaking and, by 2011, adopted what would be the first set of statewide numeric nutrient standards for Florida’s waters. By 2015, almost all the remaining waters in Florida have numeric nutrient standards (see for FDEP Regulation Nutrient Criteria’s for: Streams, spring vents: <https://www.flrules.org/gateway/RuleNo.asp?title=SURFACE%20WATER%20QUALITY%20STANDARDS&ID=62-302.531>).



Figure 1. Map showing nutrient thresholds areas for streams set forth by FDEP.

Table 1. The nutrient thresholds for streams are listed in table below along with the map showing zones.

Nutrient Watershed Region	Total Phosphorus Nutrient Threshold ¹	Total Nitrogen Nutrient Threshold ¹
Panhandle West	60 µg/L	670 µg/L
Panhandle East	180 µg/L	1030 µg/L
North Central	300 µg/L	1870 µg/L
Peninsular	120 µg/L	1540 µg/L
West Central	490 µg/L	1650 µg/L
South Florida	No numeric nutrient threshold. The narrative criterion in paragraph 62-302.530(47)(b), F.A.C., applies.	No numeric nutrient threshold. The narrative criterion in paragraph 62-302.530(47)(b), F.A.C., applies.

¹These values are annual geometric mean concentrations not to be exceeded more than once in any three calendar year periods.

Base File Data for River/Streams: Definitions

- **County:** Name of county in which the system resides.
- **Name:** Stream name that LAKEWATCH uses for the system.
- **GNIS Number:** Number created by USGS's Geographic Names Information System.
- **Water Body Type:** Four different types of systems; lakes, estuaries, river/streams and springs.
- **Period of Record (years):** Number of years a system has been in the LAKEWATCH program.
- **Latitude and Longitude:** Coordinates identifying the exact location of station 1 for each system.

Table 2. Base File Data.

County	Alachua
Name	Paraners Branch-1
GNIS Number	288492
Water Body Type	River/Stream
Period of Record (years, range)	7 (2015 to 2021)
Latitude	29.9091
Longitude	-82.5635

Long-Term Data for River/Streams: Definitions

The following long-term data are the primary trophic state parameters collected by LAKEWATCH volunteers and classification variables color and specific conductance (LAKEWATCH recently began analyzing samples quarterly for color and specific conductance):

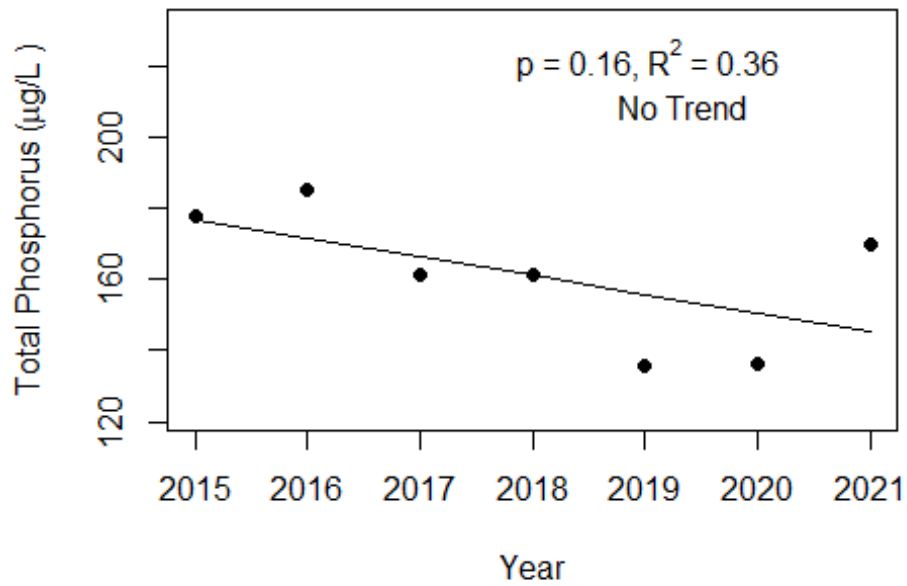
- **Total Phosphorus ($\mu\text{g/L}$):** The nutrient most often limiting growth of plant/algae.
- **Total Nitrogen ($\mu\text{g/L}$):** Another nutrient needed for aquatic plant/algae growth but only limiting when nitrogen to phosphorus ratios are generally less than 10.
- **Chlorophyll-uncorrected ($\mu\text{g/L}$):** Chlorophyll concentrations are used to measure relative abundances of open water algal population.
- **Secchi (ft), Secchi (m):** Secchi measurements are estimates of water clarity.
- **Color (Pt-Co Units):** LAKEWATCH measures true color, which is the color of the water after particles have been filter out.
- **Specific Conductance ($\mu\text{S/cm@25}^\circ\text{C}$):** Measurement of the ability of water to conduct electricity and can be used to estimate the amount of dissolved materials in water.

Table 3. Long-term trophic state data collected monthly by LAKEWATCH volunteers and color and specific conductance (collected quarterly).

Parameter	Minimum and Maximum Annual Geometric Means	Grand Geometric Mean (Sampling years)
Total Phosphorus ($\mu\text{g/L}$)	136 - 185	160 (7)
Total Nitrogen ($\mu\text{g/L}$)	754 - 1080	872 (7)
Chlorophyll- uncorrected ($\mu\text{g/L}$)	1 - 3	2 (7)
Secchi (ft)	-	(0)
Secchi (m)	-	(0)
Color (Pt-Co Units)	72 - 295	142 (7)
Specific Conductance ($\mu\text{S/cm@25 C}$)	137 - 270	219 (7)

Figure 2 and Figure 3. Trend plots of annual average total phosphorus and annual average total nitrogen versus year. The R^2 value indicates the strength of the relations (ranges from 0.0 to 1.0; higher the R^2 the stronger the relation) and the p value indicates if the relation is significant ($p < 0.05$ is significant). Trend status are reported on the plots.

Paraners Branch-1 (Alachua)



Paraners Branch-1 (Alachua)

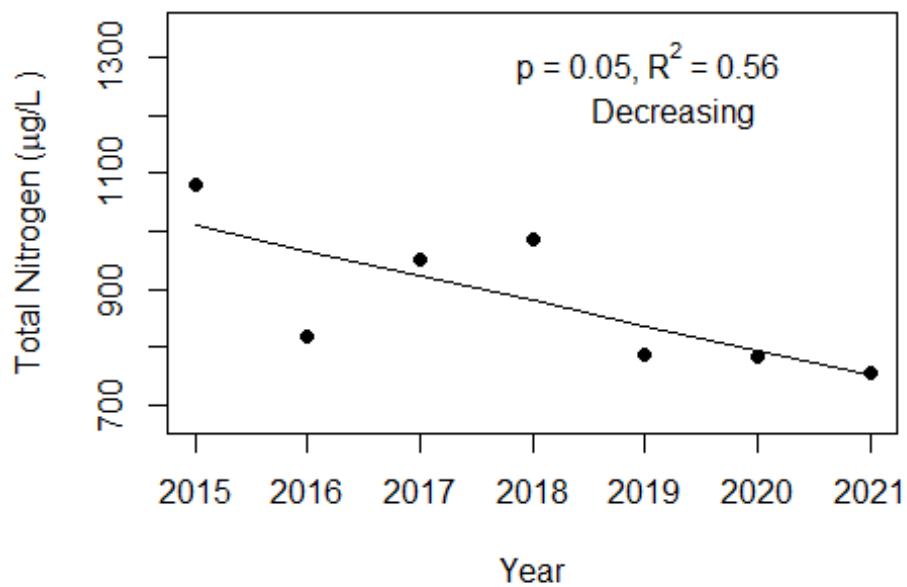
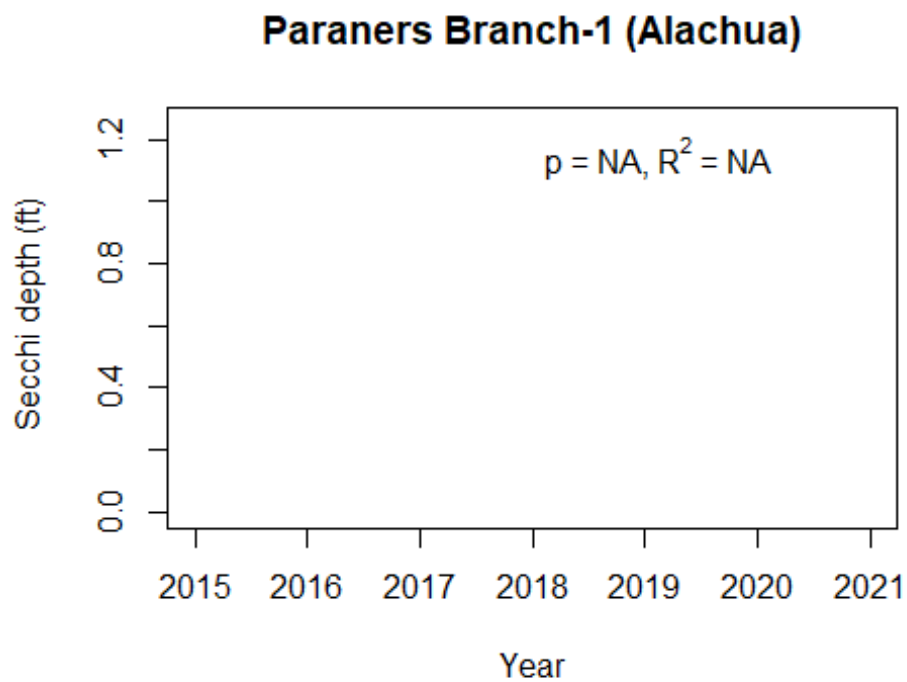
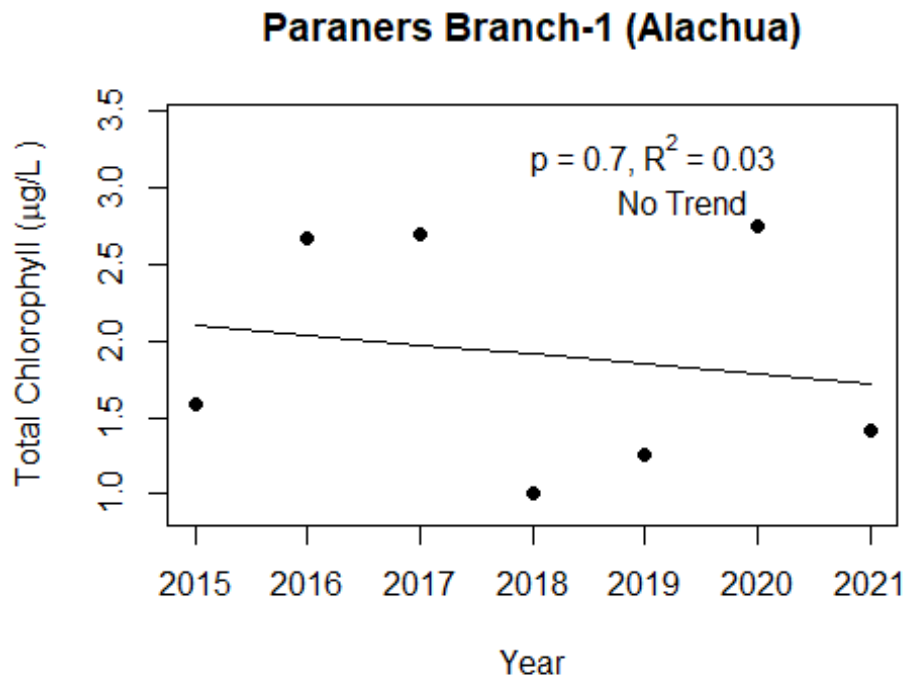


Figure 4 and Figure 5. Trend plots of annual average chlorophyll and annual average Secchi versus year. The R^2 value indicates the strength of the relations (ranges from 0.0 to 1.0; higher the R^2 the stronger the relations and the p value indicates if the relation is significant ($p < 0.05$ is significant). Trend status are reported on plots.



LAKEWATCH Report for Paroners Branch-2 in Alachua County
Watershed Region: North Central
Using Data Downloaded 1/31/22

Introduction for River/Streams

This report summarizes data collected on systems that have been part of the LAKEWATCH program. Data are from the period of record for individual systems. The first part of this summary lists background data for each system, the second part lists the long-term data geometric means and ranges and the final part are the trend plots for nutrients, chlorophyll, and Secchi depth. **Plots were only made for systems with five or more years of data.**

For decades Florida has had a narrative nutrient water quality criterion in place to protect Florida’s waters against nutrient over-enrichment. In 2009, the Florida Department of Environmental Protection (FDEP) initiated rulemaking and, by 2011, adopted what would be the first set of statewide numeric nutrient standards for Florida’s waters. By 2015, almost all the remaining waters in Florida have numeric nutrient standards (see for FDEP Regulation Nutrient Criteria’s for: Streams, spring vents: <https://www.flrules.org/gateway/RuleNo.asp?title=SURFACE%20WATER%20QUALITY%20STANDARDS&ID=62-302.531>).



Figure 1. Map showing nutrient thresholds areas for streams set forth by FDEP.

Table 1. The nutrient thresholds for streams are listed in table below along with the map showing zones.

Nutrient Watershed Region	Total Phosphorus Nutrient Threshold ¹	Total Nitrogen Nutrient Threshold ¹
Panhandle West	60 µg/L	670 µg/L
Panhandle East	180 µg/L	1030 µg/L
North Central	300 µg/L	1870 µg/L
Peninsular	120 µg/L	1540 µg/L
West Central	490 µg/L	1650 µg/L
South Florida	No numeric nutrient threshold. The narrative criterion in paragraph 62-302.530(47)(b), F.A.C., applies.	No numeric nutrient threshold. The narrative criterion in paragraph 62-302.530(47)(b), F.A.C., applies.

¹These values are annual geometric mean concentrations not to be exceeded more than once in any three calendar year periods.

Base File Data for River/Streams: Definitions

- **County:** Name of county in which the system resides.
- **Name:** Stream name that LAKEWATCH uses for the system.
- **GNIS Number:** Number created by USGS's Geographic Names Information System.
- **Water Body Type:** Four different types of systems; lakes, estuaries, river/streams and springs.
- **Period of Record (years):** Number of years a system has been in the LAKEWATCH program.
- **Latitude and Longitude:** Coordinates identifying the exact location of station 1 for each system.

Table 2. Base File Data.

County	Alachua
Name	Paraners Branch-2
GNIS Number	288492
Water Body Type	River/Stream
Period of Record (years, range)	7 (2015 to 2021)
Latitude	29.9099
Longitude	-82.5593

Long-Term Data for River/Streams: Definitions

The following long-term data are the primary trophic state parameters collected by LAKEWATCH volunteers and classification variables color and specific conductance (LAKEWATCH recently began analyzing samples quarterly for color and specific conductance):

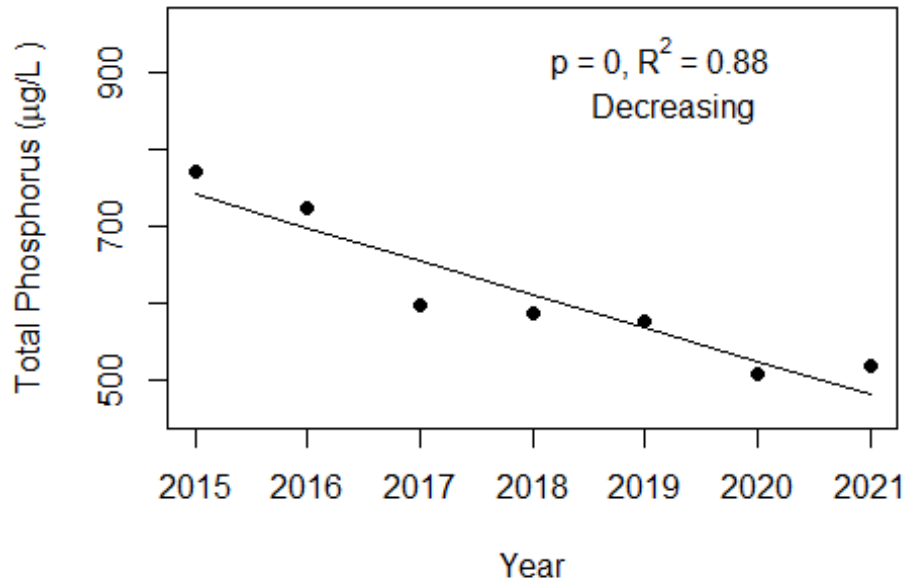
- **Total Phosphorus ($\mu\text{g/L}$):** The nutrient most often limiting growth of plant/algae.
- **Total Nitrogen ($\mu\text{g/L}$):** Another nutrient needed for aquatic plant/algae growth but only limiting when nitrogen to phosphorus ratios are generally less than 10.
- **Chlorophyll-uncorrected ($\mu\text{g/L}$):** Chlorophyll concentrations are used to measure relative abundances of open water algal population.
- **Secchi (ft), Secchi (m):** Secchi measurements are estimates of water clarity.
- **Color (Pt-Co Units):** LAKEWATCH measures true color, which is the color of the water after particles have been filter out.
- **Specific Conductance ($\mu\text{S/cm@25}^\circ\text{C}$):** Measurement of the ability of water to conduct electricity and can be used to estimate the amount of dissolved materials in water.

Table 3. Long-term trophic state data collected monthly by LAKEWATCH volunteers and color and specific conductance (collected quarterly).

Parameter	Minimum and Maximum Annual Geometric Means	Grand Geometric Mean (Sampling years)
Total Phosphorus ($\mu\text{g/L}$)	509 - 771	605 (7)
Total Nitrogen ($\mu\text{g/L}$)	596 - 988	776 (7)
Chlorophyll- uncorrected ($\mu\text{g/L}$)	1 - 5	2 (7)
Secchi (ft)	-	(0)
Secchi (m)	-	(0)
Color (Pt-Co Units)	53 - 78	63 (7)
Specific Conductance ($\mu\text{S/cm@25 C}$)	169 - 203	187 (7)

Figure 2 and Figure 3. Trend plots of annual average total phosphorus and annual average total nitrogen versus year. The R^2 value indicates the strength of the relations (ranges from 0.0 to 1.0; higher the R^2 the stronger the relation) and the p value indicates if the relation is significant ($p < 0.05$ is significant). Trend status are reported on the plots.

Paraners Branch-2 (Alachua)



Paraners Branch-2 (Alachua)

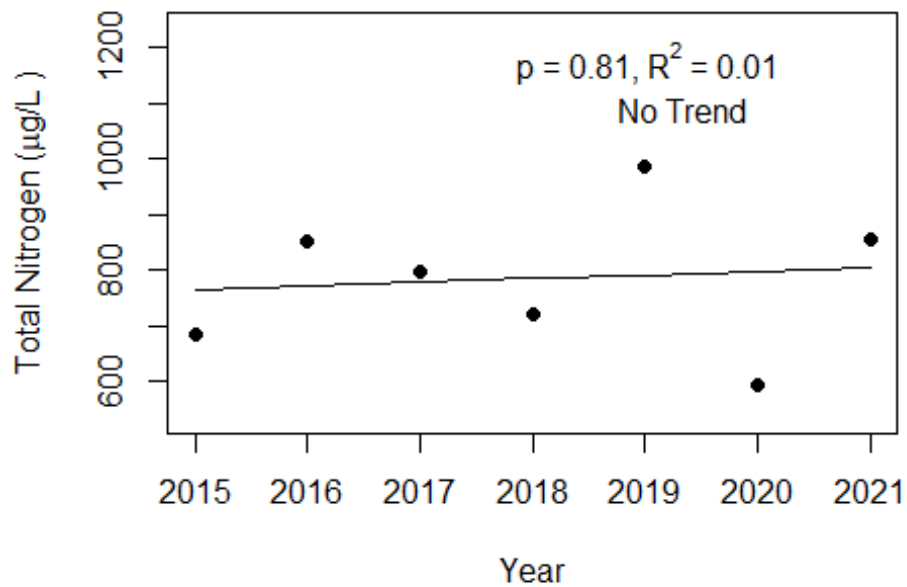
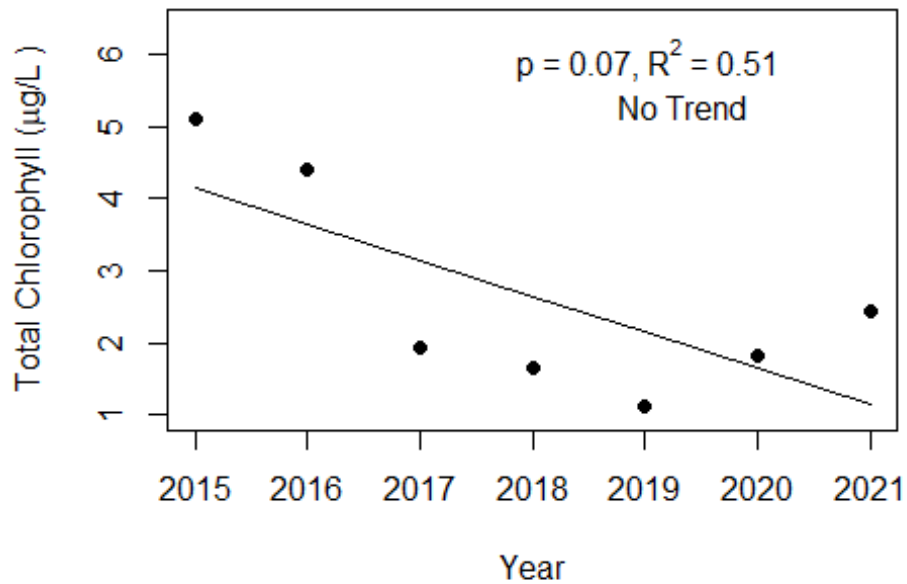
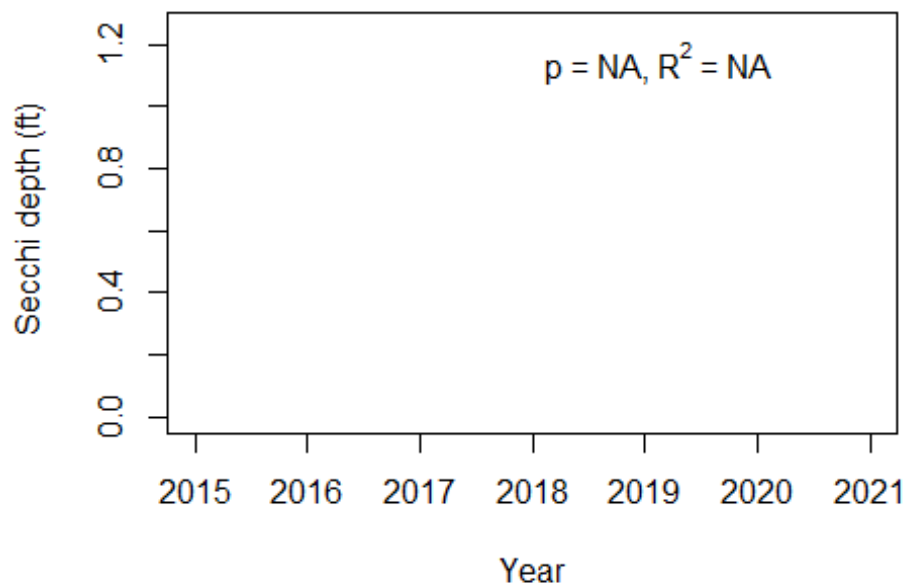


Figure 4 and Figure 5. Trend plots of annual average chlorophyll and annual average Secchi versus year. The R^2 value indicates the strength of the relations (ranges from 0.0 to 1.0; higher the R^2 the stronger the relations and the p value indicates if the relation is significant ($p < 0.05$ is significant). Trend status are reported on plots.

Paraners Branch-2 (Alachua)



Paraners Branch-2 (Alachua)



LAKEWATCH Report for Paroners Branch-3 in Alachua County
Watershed Region: North Central
Using Data Downloaded 1/31/22

Introduction for River/Streams

This report summarizes data collected on systems that have been part of the LAKEWATCH program. Data are from the period of record for individual systems. The first part of this summary lists background data for each system, the second part lists the long-term data geometric means and ranges and the final part are the trend plots for nutrients, chlorophyll, and Secchi depth. **Plots were only made for systems with five or more years of data.**

For decades Florida has had a narrative nutrient water quality criterion in place to protect Florida’s waters against nutrient over-enrichment. In 2009, the Florida Department of Environmental Protection (FDEP) initiated rulemaking and, by 2011, adopted what would be the first set of statewide numeric nutrient standards for Florida’s waters. By 2015, almost all the remaining waters in Florida have numeric nutrient standards (see for FDEP Regulation Nutrient Criteria’s for: Streams, spring vents: <https://www.flrules.org/gateway/RuleNo.asp?title=SURFACE%20WATER%20QUALITY%20STANDARDS&ID=62-302.531>).



Figure 1. Map showing nutrient thresholds areas for streams set forth by FDEP.

Table 1. The nutrient thresholds for streams are listed in table below along with the map showing zones.

Nutrient Watershed Region	Total Phosphorus Nutrient Threshold ¹	Total Nitrogen Nutrient Threshold ¹
Panhandle West	60 µg/L	670 µg/L
Panhandle East	180 µg/L	1030 µg/L
North Central	300 µg/L	1870 µg/L
Peninsular	120 µg/L	1540 µg/L
West Central	490 µg/L	1650 µg/L
South Florida	No numeric nutrient threshold. The narrative criterion in paragraph 62-302.530(47)(b), F.A.C., applies.	No numeric nutrient threshold. The narrative criterion in paragraph 62-302.530(47)(b), F.A.C., applies.

¹These values are annual geometric mean concentrations not to be exceeded more than once in any three calendar year periods.

Base File Data for River/Streams: Definitions

- **County:** Name of county in which the system resides.
- **Name:** Stream name that LAKEWATCH uses for the system.
- **GNIS Number:** Number created by USGS's Geographic Names Information System.
- **Water Body Type:** Four different types of systems; lakes, estuaries, river/streams and springs.
- **Period of Record (years):** Number of years a system has been in the LAKEWATCH program.
- **Latitude and Longitude:** Coordinates identifying the exact location of station 1 for each system.

Table 2. Base File Data.

County	Alachua
Name	Paraners Branch-3
GNIS Number	288492
Water Body Type	River/Stream
Period of Record (years, range)	7 (2015 to 2021)
Latitude	29.9071
Longitude	-82.5351

Long-Term Data for River/Streams: Definitions

The following long-term data are the primary trophic state parameters collected by LAKEWATCH volunteers and classification variables color and specific conductance (LAKEWATCH recently began analyzing samples quarterly for color and specific conductance):

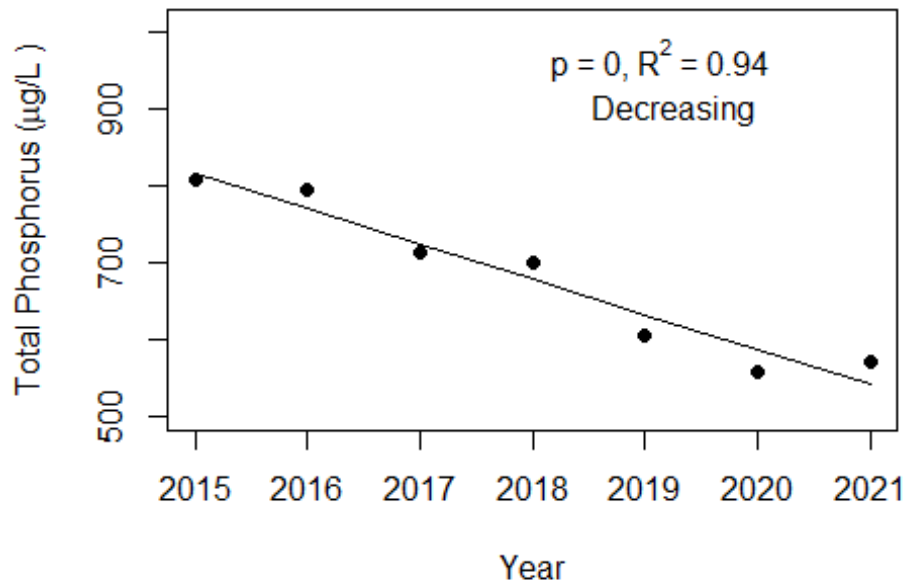
- **Total Phosphorus ($\mu\text{g/L}$):** The nutrient most often limiting growth of plant/algae.
- **Total Nitrogen ($\mu\text{g/L}$):** Another nutrient needed for aquatic plant/algae growth but only limiting when nitrogen to phosphorus ratios are generally less than 10.
- **Chlorophyll-uncorrected ($\mu\text{g/L}$):** Chlorophyll concentrations are used to measure relative abundances of open water algal population.
- **Secchi (ft), Secchi (m):** Secchi measurements are estimates of water clarity.
- **Color (Pt-Co Units):** LAKEWATCH measures true color, which is the color of the water after particles have been filter out.
- **Specific Conductance ($\mu\text{S/cm@25}^\circ\text{C}$):** Measurement of the ability of water to conduct electricity and can be used to estimate the amount of dissolved materials in water.

Table 3. Long-term trophic state data collected monthly by LAKEWATCH volunteers and color and specific conductance (collected quarterly).

Parameter	Minimum and Maximum Annual Geometric Means	Grand Geometric Mean (Sampling years)
Total Phosphorus ($\mu\text{g/L}$)	558 - 806	671 (7)
Total Nitrogen ($\mu\text{g/L}$)	930 - 1333	1152 (7)
Chlorophyll- uncorrected ($\mu\text{g/L}$)	2 - 6	4 (7)
Secchi (ft)	-	(0)
Secchi (m)	-	(0)
Color (Pt-Co Units)	37 - 53	46 (7)
Specific Conductance ($\mu\text{S/cm@25 C}$)	173 - 199	188 (7)

Figure 2 and Figure 3. Trend plots of annual average total phosphorus and annual average total nitrogen versus year. The R^2 value indicates the strength of the relations (ranges from 0.0 to 1.0; higher the R^2 the stronger the relation) and the p value indicates if the relation is significant ($p < 0.05$ is significant). Trend status are reported on the plots.

Paraners Branch-3 (Alachua)



Paraners Branch-3 (Alachua)

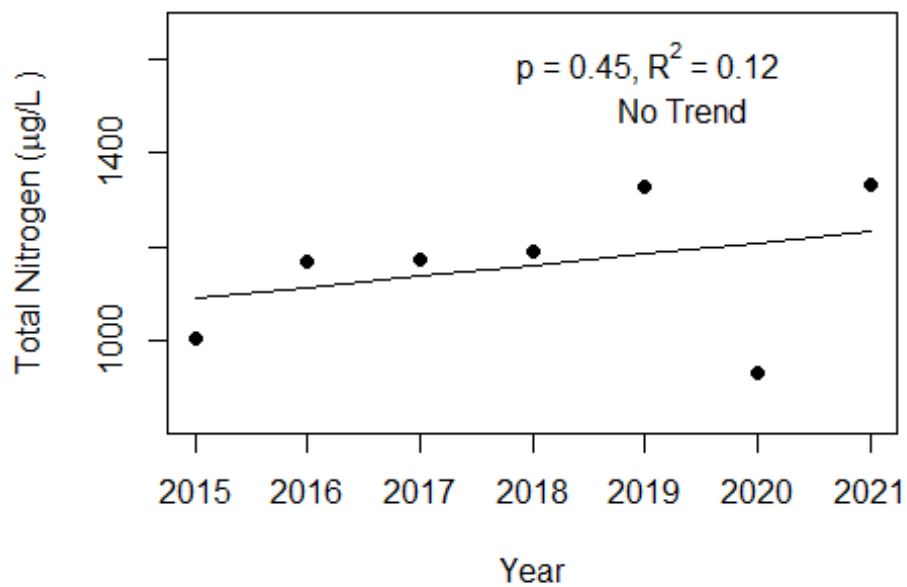
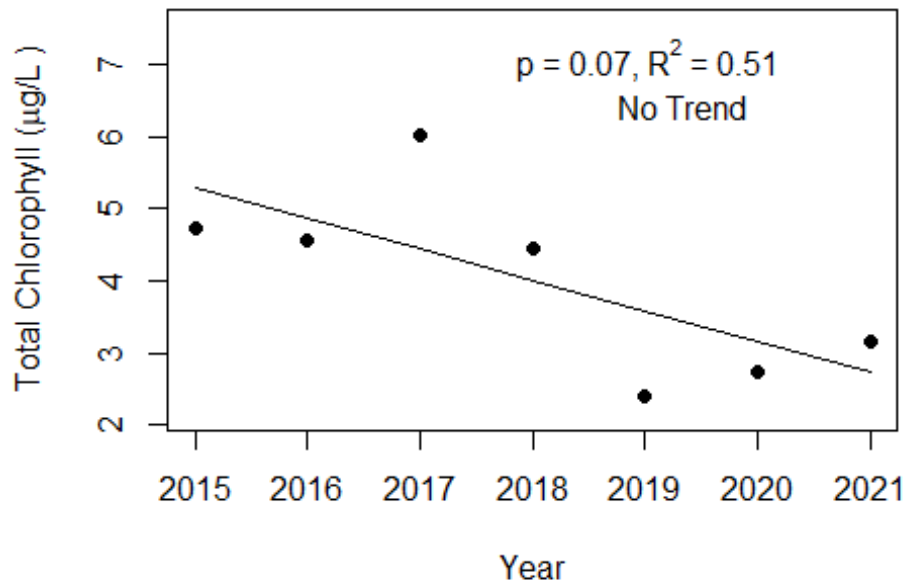
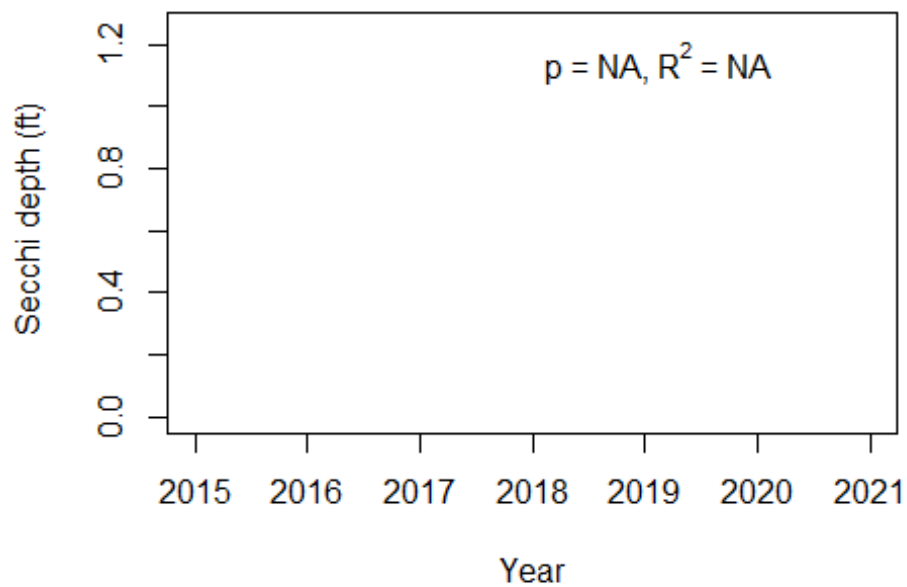


Figure 4 and Figure 5. Trend plots of annual average chlorophyll and annual average Secchi versus year. The R^2 value indicates the strength of the relations (ranges from 0.0 to 1.0; higher the R^2 the stronger the relations and the p value indicates if the relation is significant ($p < 0.05$ is significant)). Trend status are reported on plots.

Paraners Branch-3 (Alachua)



Paraners Branch-3 (Alachua)



LAKEWATCH Report for Santa Fe River Rise-1 in Alachua County
Watershed Region: North Central
Using Data Downloaded 1/31/22

Introduction for River/Streams

This report summarizes data collected on systems that have been part of the LAKEWATCH program. Data are from the period of record for individual systems. The first part of this summary lists background data for each system, the second part lists the long-term data geometric means and ranges and the final part are the trend plots for nutrients, chlorophyll, and Secchi depth. **Plots were only made for systems with five or more years of data.**

For decades Florida has had a narrative nutrient water quality criterion in place to protect Florida’s waters against nutrient over-enrichment. In 2009, the Florida Department of Environmental Protection (FDEP) initiated rulemaking and, by 2011, adopted what would be the first set of statewide numeric nutrient standards for Florida’s waters. By 2015, almost all the remaining waters in Florida have numeric nutrient standards (see for FDEP Regulation Nutrient Criteria’s for: Streams, spring vents: <https://www.flrules.org/gateway/RuleNo.asp?title=SURFACE%20WATER%20QUALITY%20STANDARDS&ID=62-302.531>).



Figure 1. Map showing nutrient thresholds areas for streams set forth by FDEP.

Table 1. The nutrient thresholds for streams are listed in table below along with the map showing zones.

Nutrient Watershed Region	Total Phosphorus Nutrient Threshold ¹	Total Nitrogen Nutrient Threshold ¹
Panhandle West	60 µg/L	670 µg/L
Panhandle East	180 µg/L	1030 µg/L
North Central	300 µg/L	1870 µg/L
Peninsular	120 µg/L	1540 µg/L
West Central	490 µg/L	1650 µg/L
South Florida	No numeric nutrient threshold. The narrative criterion in paragraph 62-302.530(47)(b), F.A.C., applies.	No numeric nutrient threshold. The narrative criterion in paragraph 62-302.530(47)(b), F.A.C., applies.

¹These values are annual geometric mean concentrations not to be exceeded more than once in any three calendar year periods.

Base File Data for River/Streams: Definitions

- **County:** Name of county in which the system resides.
- **Name:** Stream name that LAKEWATCH uses for the system.
- **GNIS Number:** Number created by USGS's Geographic Names Information System.
- **Water Body Type:** Four different types of systems; lakes, estuaries, river/streams and springs.
- **Period of Record (years):** Number of years a system has been in the LAKEWATCH program.
- **Latitude and Longitude:** Coordinates identifying the exact location of station 1 for each system.

Table 2. Base File Data.

County	Alachua
Name	Santa Fe River Rise-1
GNIS Number	290658
Water Body Type	River/Stream
Period of Record (years, range)	7 (2015 to 2021)
Latitude	29.874
Longitude	-82.5915

Long-Term Data for River/Streams: Definitions

The following long-term data are the primary trophic state parameters collected by LAKEWATCH volunteers and classification variables color and specific conductance (LAKEWATCH recently began analyzing samples quarterly for color and specific conductance):

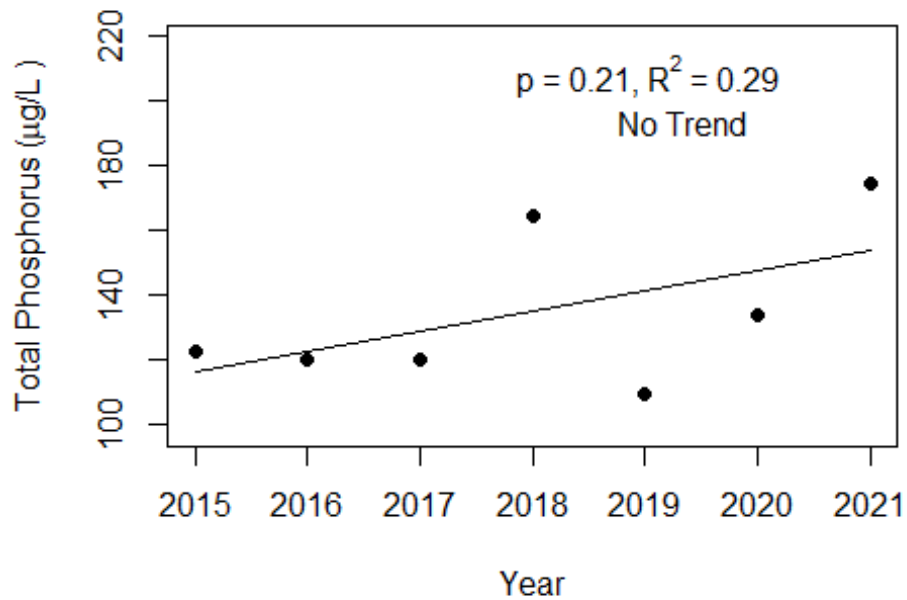
- **Total Phosphorus ($\mu\text{g/L}$):** The nutrient most often limiting growth of plant/algae.
- **Total Nitrogen ($\mu\text{g/L}$):** Another nutrient needed for aquatic plant/algae growth but only limiting when nitrogen to phosphorus ratios are generally less than 10.
- **Chlorophyll-uncorrected ($\mu\text{g/L}$):** Chlorophyll concentrations are used to measure relative abundances of open water algal population.
- **Secchi (ft), Secchi (m):** Secchi measurements are estimates of water clarity.
- **Color (Pt-Co Units):** LAKEWATCH measures true color, which is the color of the water after particles have been filter out.
- **Specific Conductance ($\mu\text{S/cm@25}^\circ\text{C}$):** Measurement of the ability of water to conduct electricity and can be used to estimate the amount of dissolved materials in water.

Table 3. Long-term trophic state data collected monthly by LAKEWATCH volunteers and color and specific conductance (collected quarterly).

Parameter	Minimum and Maximum Annual Geometric Means	Grand Geometric Mean (Sampling years)
Total Phosphorus ($\mu\text{g/L}$)	109 - 175	133 (7)
Total Nitrogen ($\mu\text{g/L}$)	610 - 1011	825 (7)
Chlorophyll- uncorrected ($\mu\text{g/L}$)	1 - 3	1 (6)
Secchi (ft)	2.4 - 4	3.5 (5)
Secchi (m)	0.7 - 1.2	1.2 (5)
Color (Pt-Co Units)	69 - 231	131 (7)
Specific Conductance ($\mu\text{S/cm@25 C}$)	114 - 350	250 (7)

Figure 2 and Figure 3. Trend plots of annual average total phosphorus and annual average total nitrogen versus year. The R^2 value indicates the strength of the relations (ranges from 0.0 to 1.0; higher the R^2 the stronger the relation) and the p value indicates if the relation is significant ($p < 0.05$ is significant). Trend status are reported on the plots.

Santa Fe River Rise-1 (Alachua)



Santa Fe River Rise-1 (Alachua)

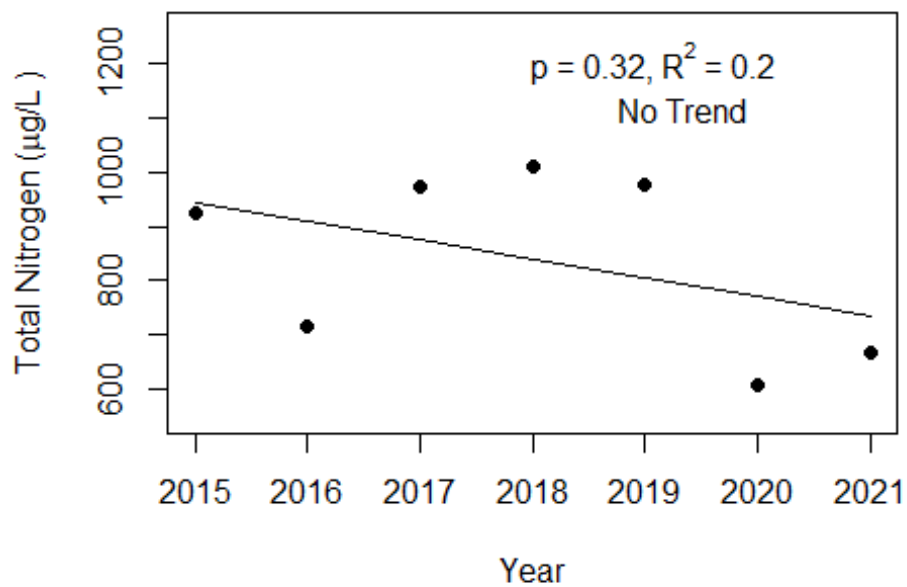
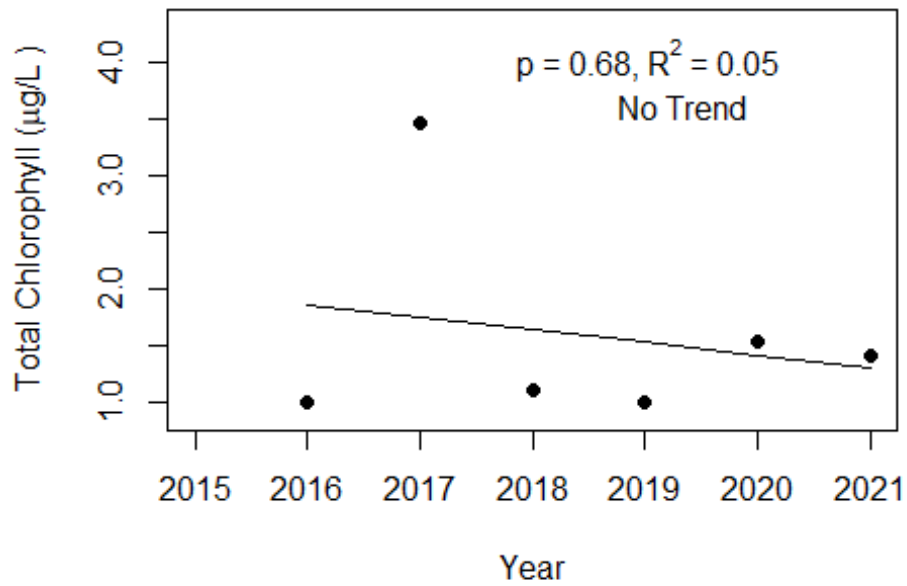
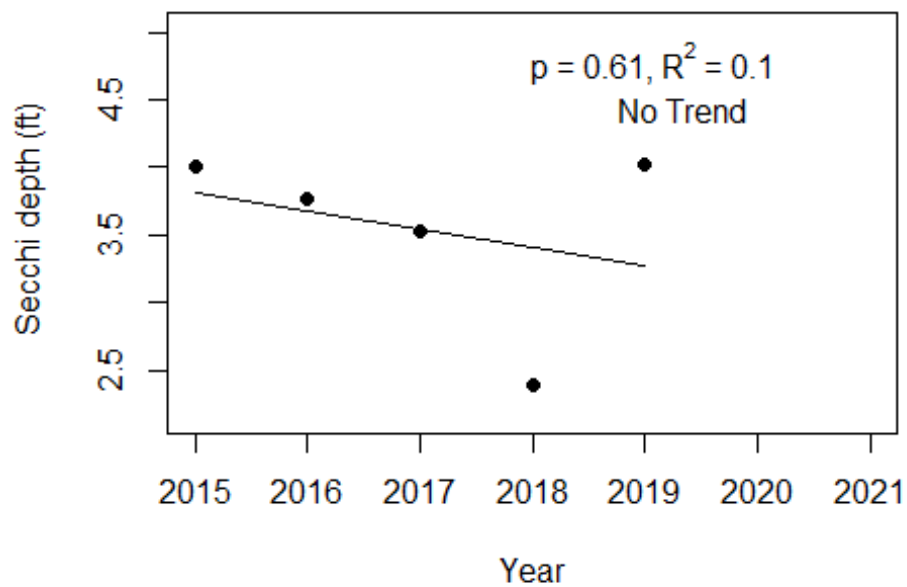


Figure 4 and Figure 5. Trend plots of annual average chlorophyll and annual average Secchi versus year. The R^2 value indicates the strength of the relations (ranges from 0.0 to 1.0; higher the R^2 the stronger the relations and the p value indicates if the relation is significant ($p < 0.05$ is significant). Trend status are reported on plots.

Santa Fe River Rise-1 (Alachua)



Santa Fe River Rise-1 (Alachua)



LAKEWATCH Report for Santa Fe River Sink-1 in Alachua County
Watershed Region: North Central
Using Data Downloaded 1/31/22

Introduction for River/Streams

This report summarizes data collected on systems that have been part of the LAKEWATCH program. Data are from the period of record for individual systems. The first part of this summary lists background data for each system, the second part lists the long-term data geometric means and ranges and the final part are the trend plots for nutrients, chlorophyll, and Secchi depth. **Plots were only made for systems with five or more years of data.**

For decades Florida has had a narrative nutrient water quality criterion in place to protect Florida’s waters against nutrient over-enrichment. In 2009, the Florida Department of Environmental Protection (FDEP) initiated rulemaking and, by 2011, adopted what would be the first set of statewide numeric nutrient standards for Florida’s waters. By 2015, almost all the remaining waters in Florida have numeric nutrient standards (see for FDEP Regulation Nutrient Criteria’s for: Streams, spring vents: <https://www.flrules.org/gateway/RuleNo.asp?title=SURFACE%20WATER%20QUALITY%20STANDARDS&ID=62-302.531>).



Figure 1. Map showing nutrient thresholds areas for streams set forth by FDEP.

Table 1. The nutrient thresholds for streams are listed in table below along with the map showing zones.

Nutrient Watershed Region	Total Phosphorus Nutrient Threshold ¹	Total Nitrogen Nutrient Threshold ¹
Panhandle West	60 µg/L	670 µg/L
Panhandle East	180 µg/L	1030 µg/L
North Central	300 µg/L	1870 µg/L
Peninsular	120 µg/L	1540 µg/L
West Central	490 µg/L	1650 µg/L
South Florida	No numeric nutrient threshold. The narrative criterion in paragraph 62-302.530(47)(b), F.A.C., applies.	No numeric nutrient threshold. The narrative criterion in paragraph 62-302.530(47)(b), F.A.C., applies.

¹These values are annual geometric mean concentrations not to be exceeded more than once in any three calendar year periods.

Base File Data for River/Streams: Definitions

- **County:** Name of county in which the system resides.
- **Name:** Stream name that LAKEWATCH uses for the system.
- **GNIS Number:** Number created by USGS's Geographic Names Information System.
- **Water Body Type:** Four different types of systems; lakes, estuaries, river/streams and springs.
- **Period of Record (years):** Number of years a system has been in the LAKEWATCH program.
- **Latitude and Longitude:** Coordinates identifying the exact location of station 1 for each system.

Table 2. Base File Data.

County	Alachua
Name	Santa Fe River Sink-1
GNIS Number	290658
Water Body Type	River/Stream
Period of Record (years, range)	7 (2015 to 2021)
Latitude	29.9146
Longitude	-82.5796

Long-Term Data for River/Streams: Definitions

The following long-term data are the primary trophic state parameters collected by LAKEWATCH volunteers and classification variables color and specific conductance (LAKEWATCH recently began analyzing samples quarterly for color and specific conductance):

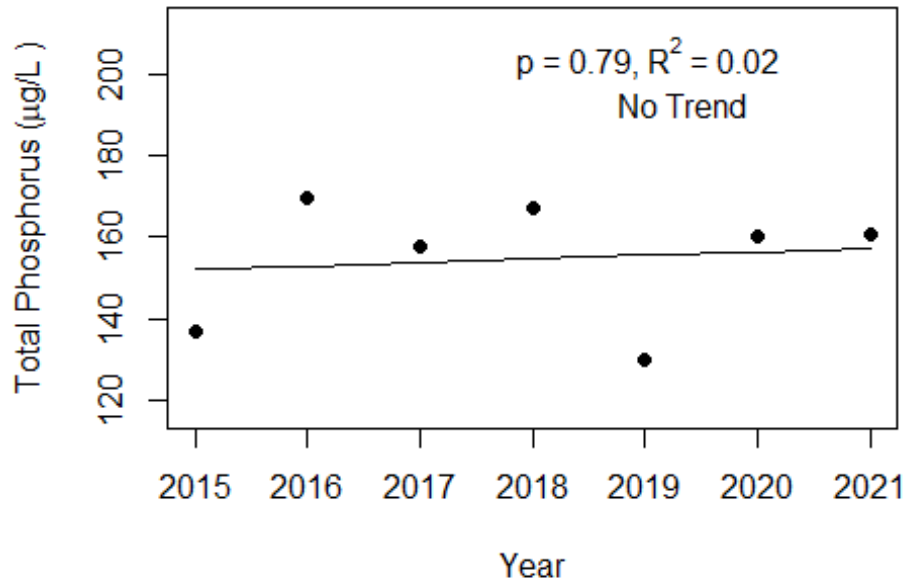
- **Total Phosphorus ($\mu\text{g/L}$):** The nutrient most often limiting growth of plant/algae.
- **Total Nitrogen ($\mu\text{g/L}$):** Another nutrient needed for aquatic plant/algae growth but only limiting when nitrogen to phosphorus ratios are generally less than 10.
- **Chlorophyll-uncorrected ($\mu\text{g/L}$):** Chlorophyll concentrations are used to measure relative abundances of open water algal population.
- **Secchi (ft), Secchi (m):** Secchi measurements are estimates of water clarity.
- **Color (Pt-Co Units):** LAKEWATCH measures true color, which is the color of the water after particles have been filter out.
- **Specific Conductance ($\mu\text{S/cm@25}^\circ\text{C}$):** Measurement of the ability of water to conduct electricity and can be used to estimate the amount of dissolved materials in water.

Table 3. Long-term trophic state data collected monthly by LAKEWATCH volunteers and color and specific conductance (collected quarterly).

Parameter	Minimum and Maximum Annual Geometric Means	Grand Geometric Mean (Sampling years)
Total Phosphorus ($\mu\text{g/L}$)	130 - 170	154 (7)
Total Nitrogen ($\mu\text{g/L}$)	734 - 1095	902 (7)
Chlorophyll- uncorrected ($\mu\text{g/L}$)	1 - 2	1 (7)
Secchi (ft)	2.1 - 4.1	2.9 (7)
Secchi (m)	0.6 -1.3	1.3 (7)
Color (Pt-Co Units)	87 - 310	157 (7)
Specific Conductance ($\mu\text{S/cm@25 C}$)	104 - 217	158 (7)

Figure 2 and Figure 3. Trend plots of annual average total phosphorus and annual average total nitrogen versus year. The R^2 value indicates the strength of the relations (ranges from 0.0 to 1.0; higher the R^2 the stronger the relation) and the p value indicates if the relation is significant ($p < 0.05$ is significant). Trend status are reported on the plots.

Santa Fe River Sink-1 (Alachua)



Santa Fe River Sink-1 (Alachua)

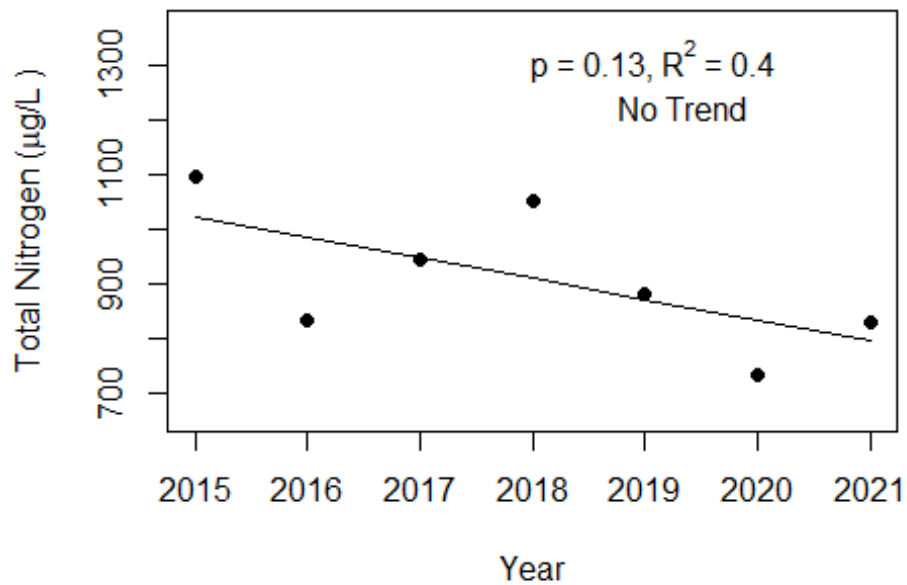
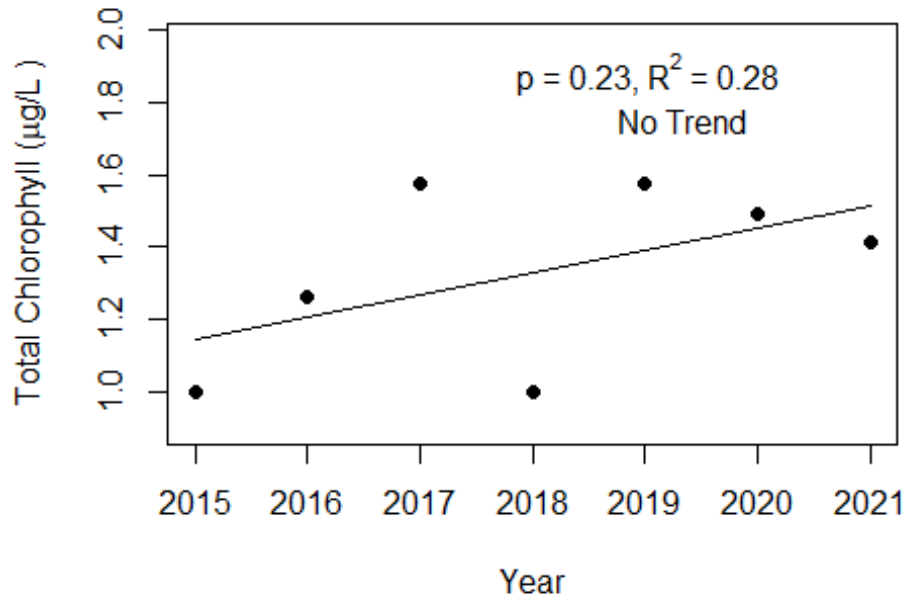
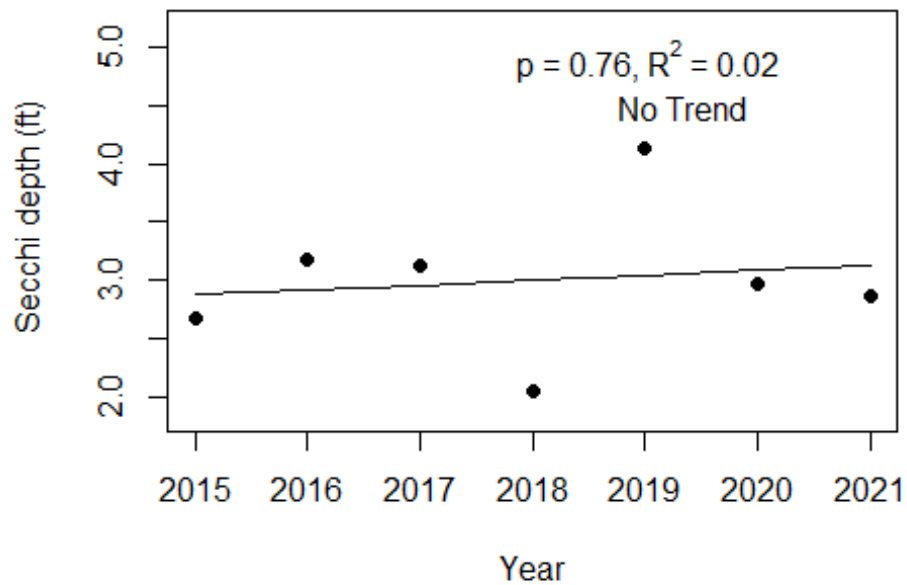


Figure 4 and Figure 5. Trend plots of annual average chlorophyll and annual average Secchi versus year. The R^2 value indicates the strength of the relations (ranges from 0.0 to 1.0; higher the R^2 the stronger the relations and the p value indicates if the relation is significant ($p < 0.05$ is significant)). Trend status are reported on plots.

Santa Fe River Sink-1 (Alachua)



Santa Fe River Sink-1 (Alachua)



LAKEWATCH Report for Santa Fe River Sink-2 in Alachua County
Watershed Region: North Central
Using Data Downloaded 1/31/22

Introduction for River/Streams

This report summarizes data collected on systems that have been part of the LAKEWATCH program. Data are from the period of record for individual systems. The first part of this summary lists background data for each system, the second part lists the long-term data geometric means and ranges and the final part are the trend plots for nutrients, chlorophyll, and Secchi depth. **Plots were only made for systems with five or more years of data.**

For decades Florida has had a narrative nutrient water quality criterion in place to protect Florida’s waters against nutrient over-enrichment. In 2009, the Florida Department of Environmental Protection (FDEP) initiated rulemaking and, by 2011, adopted what would be the first set of statewide numeric nutrient standards for Florida’s waters. By 2015, almost all the remaining waters in Florida have numeric nutrient standards (see for FDEP Regulation Nutrient Criteria’s for: Streams, spring vents: <https://www.flrules.org/gateway/RuleNo.asp?title=SURFACE%20WATER%20QUALITY%20STANDARDS&ID=62-302.531>).



Figure 1. Map showing nutrient thresholds areas for streams set forth by FDEP.

Table 1. The nutrient thresholds for streams are listed in table below along with the map showing zones.

Nutrient Watershed Region	Total Phosphorus Nutrient Threshold ¹	Total Nitrogen Nutrient Threshold ¹
Panhandle West	60 µg/L	670 µg/L
Panhandle East	180 µg/L	1030 µg/L
North Central	300 µg/L	1870 µg/L
Peninsular	120 µg/L	1540 µg/L
West Central	490 µg/L	1650 µg/L
South Florida	No numeric nutrient threshold. The narrative criterion in paragraph 62-302.530(47)(b), F.A.C., applies.	No numeric nutrient threshold. The narrative criterion in paragraph 62-302.530(47)(b), F.A.C., applies.

¹These values are annual geometric mean concentrations not to be exceeded more than once in any three calendar year periods.

Base File Data for River/Streams: Definitions

- **County:** Name of county in which the system resides.
- **Name:** Stream name that LAKEWATCH uses for the system.
- **GNIS Number:** Number created by USGS's Geographic Names Information System.
- **Water Body Type:** Four different types of systems; lakes, estuaries, river/streams and springs.
- **Period of Record (years):** Number of years a system has been in the LAKEWATCH program.
- **Latitude and Longitude:** Coordinates identifying the exact location of station 1 for each system.

Table 2. Base File Data.

County	Alachua
Name	Santa Fe River Sink-2
GNIS Number	290658
Water Body Type	River/Stream
Period of Record (years, range)	7 (2015 to 2021)
Latitude	29.9122
Longitude	-82.573

Long-Term Data for River/Streams: Definitions

The following long-term data are the primary trophic state parameters collected by LAKEWATCH volunteers and classification variables color and specific conductance (LAKEWATCH recently began analyzing samples quarterly for color and specific conductance):

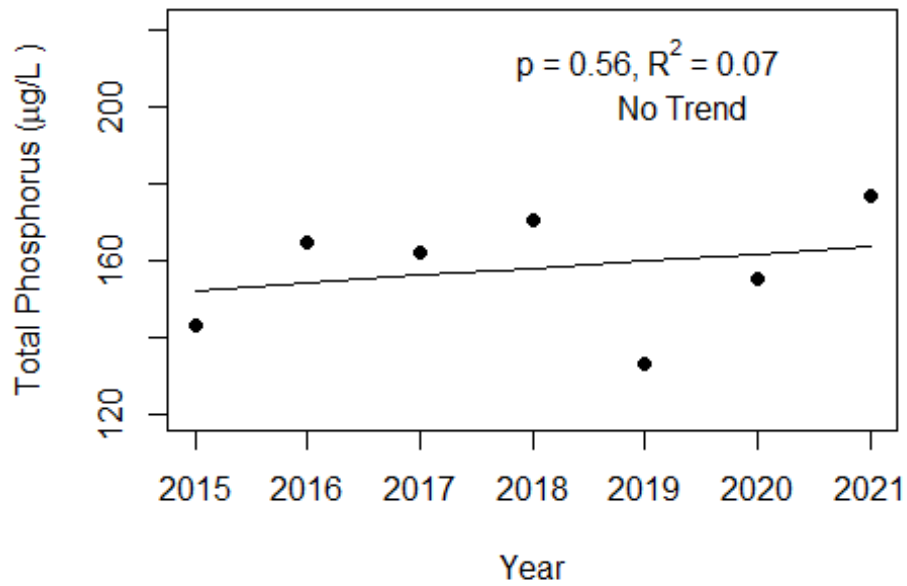
- **Total Phosphorus ($\mu\text{g/L}$):** The nutrient most often limiting growth of plant/algae.
- **Total Nitrogen ($\mu\text{g/L}$):** Another nutrient needed for aquatic plant/algae growth but only limiting when nitrogen to phosphorus ratios are generally less than 10.
- **Chlorophyll-uncorrected ($\mu\text{g/L}$):** Chlorophyll concentrations are used to measure relative abundances of open water algal population.
- **Secchi (ft), Secchi (m):** Secchi measurements are estimates of water clarity.
- **Color (Pt-Co Units):** LAKEWATCH measures true color, which is the color of the water after particles have been filter out.
- **Specific Conductance ($\mu\text{S/cm@25}^\circ\text{C}$):** Measurement of the ability of water to conduct electricity and can be used to estimate the amount of dissolved materials in water.

Table 3. Long-term trophic state data collected monthly by LAKEWATCH volunteers and color and specific conductance (collected quarterly).

Parameter	Minimum and Maximum Annual Geometric Means	Grand Geometric Mean (Sampling years)
Total Phosphorus ($\mu\text{g/L}$)	133 - 177	157 (7)
Total Nitrogen ($\mu\text{g/L}$)	731 - 1125	911 (7)
Chlorophyll- uncorrected ($\mu\text{g/L}$)	1 - 2	2 (7)
Secchi (ft)	2 - 4.2	2.8 (6)
Secchi (m)	0.6 -1.3	1.3 (6)
Color (Pt-Co Units)	89 - 381	184 (7)
Specific Conductance ($\mu\text{S/cm@25 C}$)	108 - 217	161 (7)

Figure 2 and Figure 3. Trend plots of annual average total phosphorus and annual average total nitrogen versus year. The R^2 value indicates the strength of the relations (ranges from 0.0 to 1.0; higher the R^2 the stronger the relation) and the p value indicates if the relation is significant ($p < 0.05$ is significant). Trend status are reported on the plots.

Santa Fe River Sink-2 (Alachua)



Santa Fe River Sink-2 (Alachua)

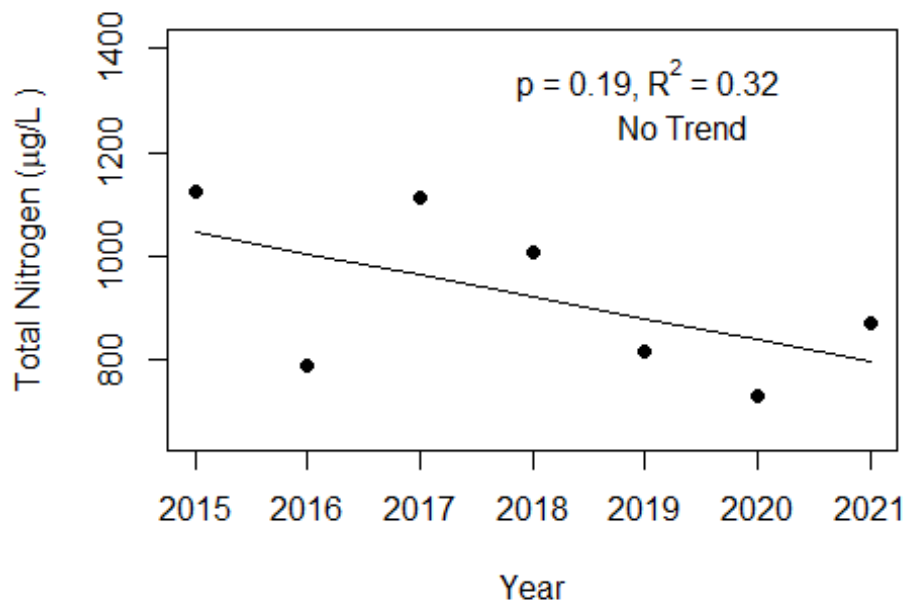
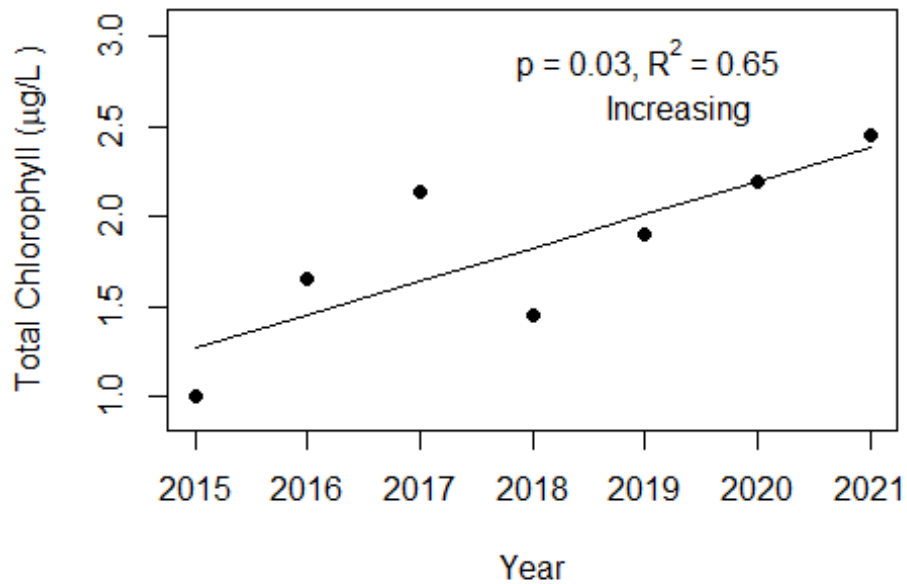
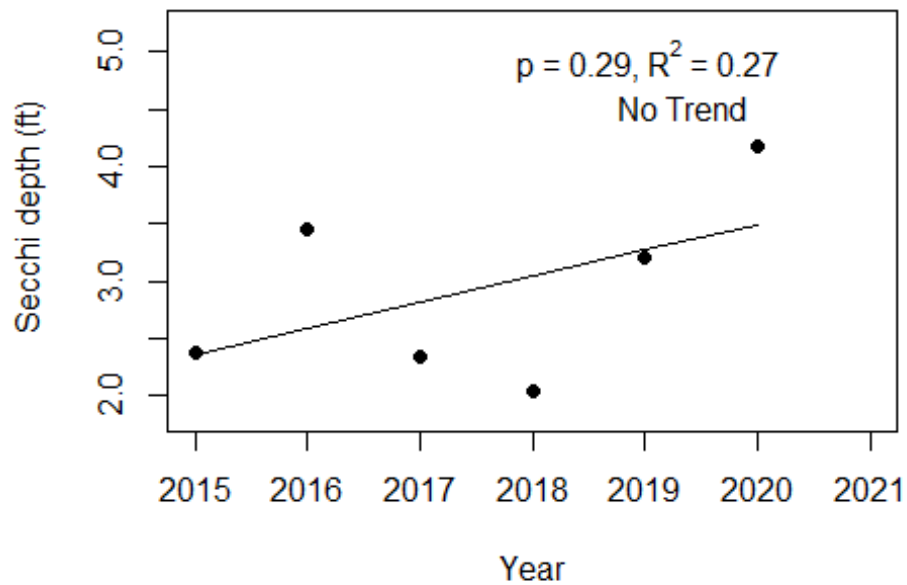


Figure 4 and Figure 5. Trend plots of annual average chlorophyll and annual average Secchi versus year. The R^2 value indicates the strength of the relations (ranges from 0.0 to 1.0; higher the R^2 the stronger the relations and the p value indicates if the relation is significant ($p < 0.05$ is significant)). Trend status are reported on plots.

Santa Fe River Sink-2 (Alachua)



Santa Fe River Sink-2 (Alachua)



LAKEWATCH Report for Turkey Creek-1 in Alachua County
Watershed Region: North Central
Using Data Downloaded 1/31/22

Introduction for River/Streams

This report summarizes data collected on systems that have been part of the LAKEWATCH program. Data are from the period of record for individual systems. The first part of this summary lists background data for each system, the second part lists the long-term data geometric means and ranges and the final part are the trend plots for nutrients, chlorophyll, and Secchi depth. **Plots were only made for systems with five or more years of data.**

For decades Florida has had a narrative nutrient water quality criterion in place to protect Florida’s waters against nutrient over-enrichment. In 2009, the Florida Department of Environmental Protection (FDEP) initiated rulemaking and, by 2011, adopted what would be the first set of statewide numeric nutrient standards for Florida’s waters. By 2015, almost all the remaining waters in Florida have numeric nutrient standards (see for FDEP Regulation Nutrient Criteria’s for: Streams, spring vents:

<https://www.flrules.org/gateway/RuleNo.asp?title=SURFACE%20WATER%20QUALITY%20STANDARDS&ID=62-302.531>).



Figure 1. Map showing nutrient thresholds areas for streams set forth by FDEP.

Table 1. The nutrient thresholds for streams are listed in table below along with the map showing zones.

Nutrient Watershed Region	Total Phosphorus Nutrient Threshold ¹	Total Nitrogen Nutrient Threshold ¹
Panhandle West	60 µg/L	670 µg/L
Panhandle East	180 µg/L	1030 µg/L
North Central	300 µg/L	1870 µg/L
Peninsular	120 µg/L	1540 µg/L
West Central	490 µg/L	1650 µg/L
South Florida	No numeric nutrient threshold. The narrative criterion in paragraph 62-302.530(47)(b), F.A.C., applies.	No numeric nutrient threshold. The narrative criterion in paragraph 62-302.530(47)(b), F.A.C., applies.

¹These values are annual geometric mean concentrations not to be exceeded more than once in any three calendar year periods.

Base File Data for River/Streams: Definitions

- **County:** Name of county in which the system resides.
- **Name:** Stream name that LAKEWATCH uses for the system.
- **GNIS Number:** Number created by USGS's Geographic Names Information System.
- **Water Body Type:** Four different types of systems; lakes, estuaries, river/streams and springs.
- **Period of Record (years):** Number of years a system has been in the LAKEWATCH program.
- **Latitude and Longitude:** Coordinates identifying the exact location of station 1 for each system.

Table 2. Base File Data.

County	Alachua
Name	Turkey Creek-1
GNIS Number	292515
Water Body Type	River/Stream
Period of Record (years, range)	8 (2014 to 2021)
Latitude	29.7586
Longitude	-82.4226

Long-Term Data for River/Streams: Definitions

The following long-term data are the primary trophic state parameters collected by LAKEWATCH volunteers and classification variables color and specific conductance (LAKEWATCH recently began analyzing samples quarterly for color and specific conductance):

- **Total Phosphorus ($\mu\text{g/L}$):** The nutrient most often limiting growth of plant/algae.
- **Total Nitrogen ($\mu\text{g/L}$):** Another nutrient needed for aquatic plant/algae growth but only limiting when nitrogen to phosphorus ratios are generally less than 10.
- **Chlorophyll-uncorrected ($\mu\text{g/L}$):** Chlorophyll concentrations are used to measure relative abundances of open water algal population.
- **Secchi (ft), Secchi (m):** Secchi measurements are estimates of water clarity.
- **Color (Pt-Co Units):** LAKEWATCH measures true color, which is the color of the water after particles have been filter out.
- **Specific Conductance ($\mu\text{S/cm@25}^\circ\text{C}$):** Measurement of the ability of water to conduct electricity and can be used to estimate the amount of dissolved materials in water.

Table 3. Long-term trophic state data collected monthly by LAKEWATCH volunteers and color and specific conductance (collected quarterly).

Parameter	Minimum and Maximum Annual Geometric Means	Grand Geometric Mean (Sampling years)
Total Phosphorus ($\mu\text{g/L}$)	288 - 412	344 (8)
Total Nitrogen ($\mu\text{g/L}$)	551 - 1214	858 (8)
Chlorophyll- uncorrected ($\mu\text{g/L}$)	2 - 3	2 (8)
Secchi (ft)	0.8 - 0.8	0.8 (1)
Secchi (m)	0.3 -0.3	0.3 (1)
Color (Pt-Co Units)	56 - 163	96 (8)
Specific Conductance ($\mu\text{S/cm@25 C}$)	197 - 269	238 (8)

Figure 2 and Figure 3. Trend plots of annual average total phosphorus and annual average total nitrogen versus year. The R^2 value indicates the strength of the relations (ranges from 0.0 to 1.0; higher the R^2 the stronger the relation) and the p value indicates if the relation is significant ($p < 0.05$ is significant). Trend status are reported on the plots.

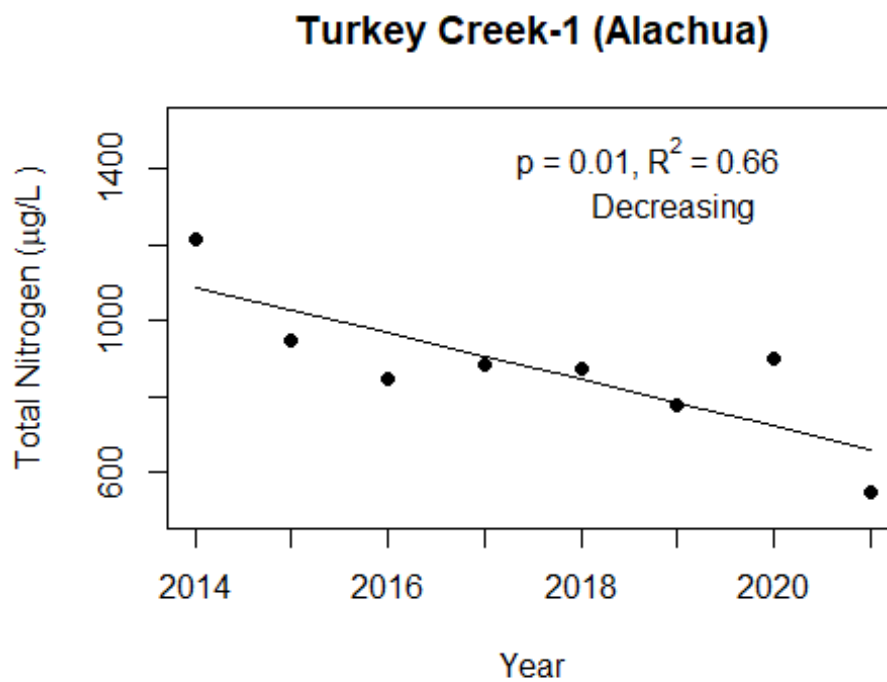
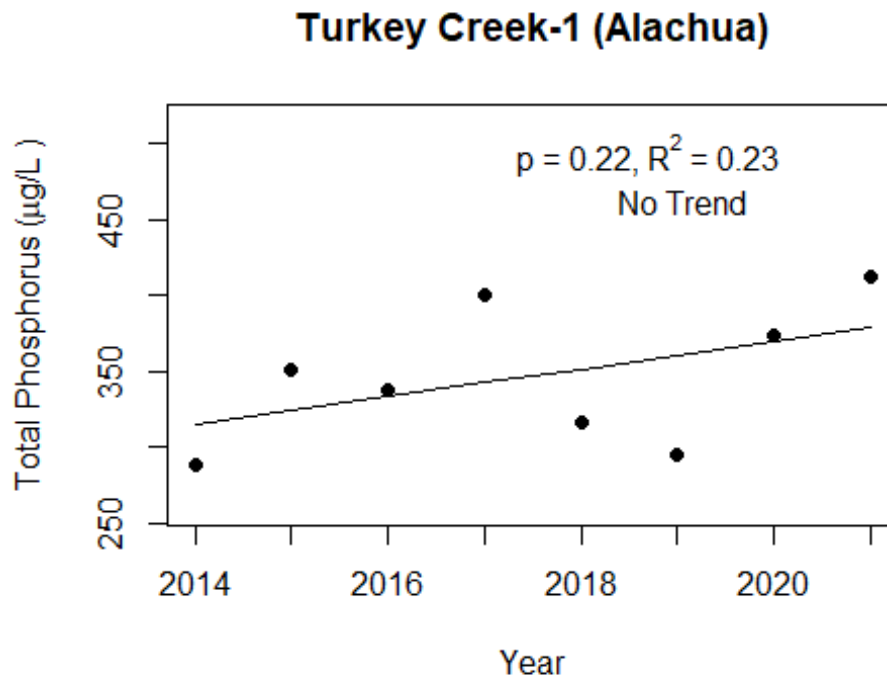
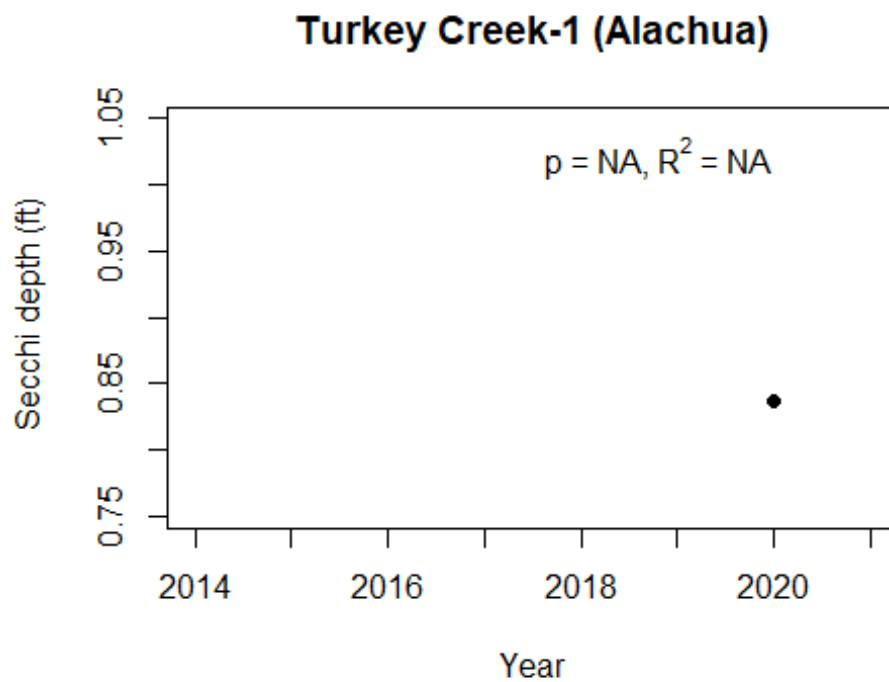
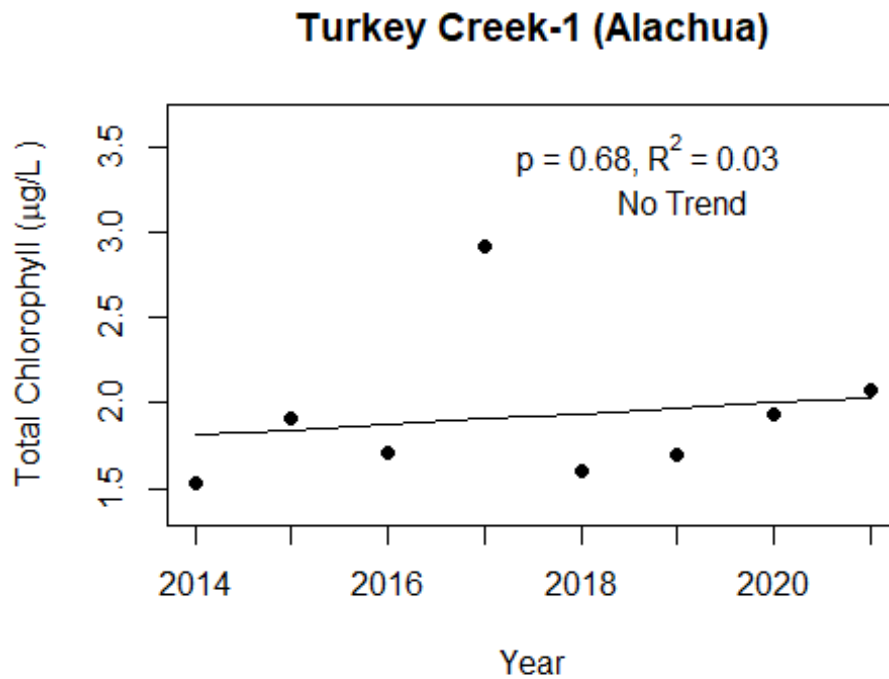


Figure 4 and Figure 5. Trend plots of annual average chlorophyll and annual average Secchi versus year. The R^2 value indicates the strength of the relations (ranges from 0.0 to 1.0; higher the R^2 the stronger the relations and the p value indicates if the relation is significant ($p < 0.05$ is significant)). Trend status are reported on plots.



LAKEWATCH Report for Turkey Creek-2 in Alachua County
Watershed Region: North Central
Using Data Downloaded 1/31/22

Introduction for River/Streams

This report summarizes data collected on systems that have been part of the LAKEWATCH program. Data are from the period of record for individual systems. The first part of this summary lists background data for each system, the second part lists the long-term data geometric means and ranges and the final part are the trend plots for nutrients, chlorophyll, and Secchi depth. **Plots were only made for systems with five or more years of data.**

For decades Florida has had a narrative nutrient water quality criterion in place to protect Florida’s waters against nutrient over-enrichment. In 2009, the Florida Department of Environmental Protection (FDEP) initiated rulemaking and, by 2011, adopted what would be the first set of statewide numeric nutrient standards for Florida’s waters. By 2015, almost all the remaining waters in Florida have numeric nutrient standards (see for FDEP Regulation Nutrient Criteria’s for: Streams, spring vents:

<https://www.flrules.org/gateway/RuleNo.asp?title=SURFACE%20WATER%20QUALITY%20STANDARDS&ID=62-302.531>).



Figure 1. Map showing nutrient thresholds areas for streams set forth by FDEP.

Table 1. The nutrient thresholds for streams are listed in table below along with the map showing zones.

Nutrient Watershed Region	Total Phosphorus Nutrient Threshold ¹	Total Nitrogen Nutrient Threshold ¹
Panhandle West	60 µg/L	670 µg/L
Panhandle East	180 µg/L	1030 µg/L
North Central	300 µg/L	1870 µg/L
Peninsular	120 µg/L	1540 µg/L
West Central	490 µg/L	1650 µg/L
South Florida	No numeric nutrient threshold. The narrative criterion in paragraph 62-302.530(47)(b), F.A.C., applies.	No numeric nutrient threshold. The narrative criterion in paragraph 62-302.530(47)(b), F.A.C., applies.

¹These values are annual geometric mean concentrations not to be exceeded more than once in any three calendar year periods.

Base File Data for River/Streams: Definitions

- **County:** Name of county in which the system resides.
- **Name:** Stream name that LAKEWATCH uses for the system.
- **GNIS Number:** Number created by USGS's Geographic Names Information System.
- **Water Body Type:** Four different types of systems; lakes, estuaries, river/streams and springs.
- **Period of Record (years):** Number of years a system has been in the LAKEWATCH program.
- **Latitude and Longitude:** Coordinates identifying the exact location of station 1 for each system.

Table 2. Base File Data.

County	Alachua
Name	Turkey Creek-2
GNIS Number	292515
Water Body Type	River/Stream
Period of Record (years, range)	8 (2014 to 2021)
Latitude	29.7544
Longitude	-82.4397

Long-Term Data for River/Streams: Definitions

The following long-term data are the primary trophic state parameters collected by LAKEWATCH volunteers and classification variables color and specific conductance (LAKEWATCH recently began analyzing samples quarterly for color and specific conductance):

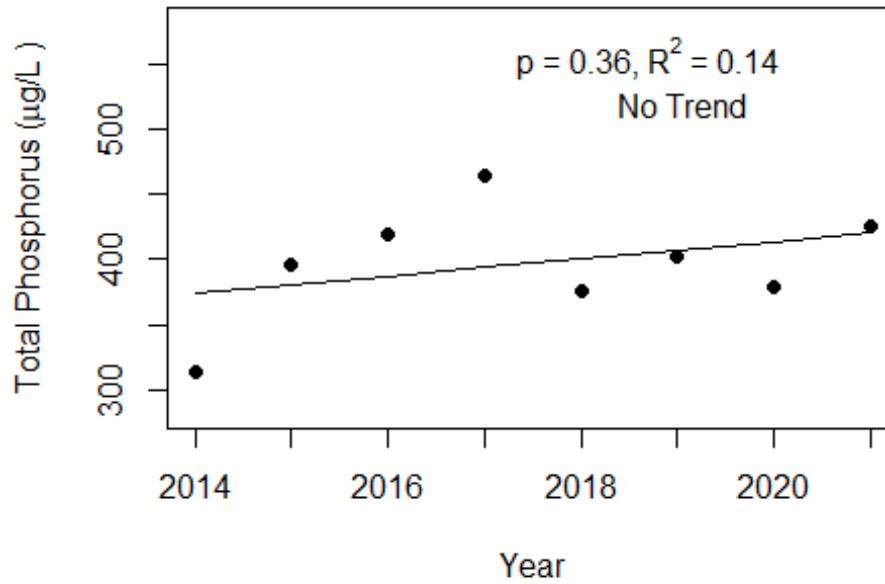
- **Total Phosphorus ($\mu\text{g/L}$):** The nutrient most often limiting growth of plant/algae.
- **Total Nitrogen ($\mu\text{g/L}$):** Another nutrient needed for aquatic plant/algae growth but only limiting when nitrogen to phosphorus ratios are generally less than 10.
- **Chlorophyll-uncorrected ($\mu\text{g/L}$):** Chlorophyll concentrations are used to measure relative abundances of open water algal population.
- **Secchi (ft), Secchi (m):** Secchi measurements are estimates of water clarity.
- **Color (Pt-Co Units):** LAKEWATCH measures true color, which is the color of the water after particles have been filter out.
- **Specific Conductance ($\mu\text{S/cm@25}^\circ\text{C}$):** Measurement of the ability of water to conduct electricity and can be used to estimate the amount of dissolved materials in water.

Table 3. Long-term trophic state data collected monthly by LAKEWATCH volunteers and color and specific conductance (collected quarterly).

Parameter	Minimum and Maximum Annual Geometric Means	Grand Geometric Mean (Sampling years)
Total Phosphorus ($\mu\text{g/L}$)	314 - 465	395 (8)
Total Nitrogen ($\mu\text{g/L}$)	592 - 1166	795 (8)
Chlorophyll- uncorrected ($\mu\text{g/L}$)	1 - 2	2 (8)
Secchi (ft)	0.4 - 0.4	0.4 (1)
Secchi (m)	0.1 -0.1	0.1 (1)
Color (Pt-Co Units)	65 - 166	98 (8)
Specific Conductance ($\mu\text{S/cm@25 C}$)	196 - 274	239 (8)

Figure 2 and Figure 3. Trend plots of annual average total phosphorus and annual average total nitrogen versus year. The R^2 value indicates the strength of the relations (ranges from 0.0 to 1.0; higher the R^2 the stronger the relation) and the p value indicates if the relation is significant ($p < 0.05$ is significant). Trend status are reported on the plots.

Turkey Creek-2 (Alachua)



Turkey Creek-2 (Alachua)

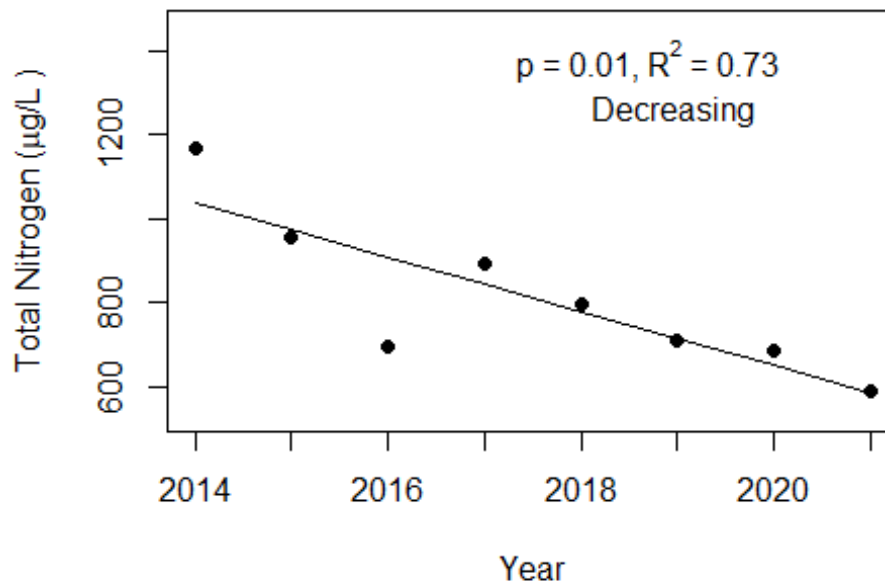


Figure 4 and Figure 5. Trend plots of annual average chlorophyll and annual average Secchi versus year. The R^2 value indicates the strength of the relations (ranges from 0.0 to 1.0; higher the R^2 the stronger the relations and the p value indicates if the relation is significant ($p < 0.05$ is significant). Trend status are reported on plots.

