

LAKEWATCH Report for Alligator Harbor-1 in Franklin County
Estuary and Estuary Segment: Apalachicola Bay and Alligator Harbor Alligator Harbor
Using Data Downloaded 1/17/2020

Introduction for Estuaries

This report summarizes data collected on systems that have been part of the LAKEWATCH program. Data are from the period of record for individual systems. The first part of this summary lists background data for each system, the second part lists the long-term data averages and ranges and the final part are trend plots for nutrients, chlorophyll and Secchi depth. Plots were only made for systems with five or more years of data.

The near shore Florida coastline is separated into estuary and estuary segments within the estuary. Deeper coastal waters are separated into coastal nutrient regions and coastal nutrient segments within the regions. Numeric nutrient criteria are established for all estuary segments, including criteria for total nitrogen, total phosphorus, and chlorophyll *a*. For open ocean coastal waters, numeric criteria are established for chlorophyll *a*, that is derived from satellite remote sensing techniques. For those locations without defined segments there are narrative nutrient criteria (e.g., Florida Keys Halo Zone).

The maps defining individual estuaries and coastal segments can be found at the following link:
<https://www.flrules.org/Gateway/reference.asp?No=Ref-05420>

The individual nutrient criteria can be found at the following link:
<https://www.flrules.org/gateway/RuleNo.asp?title=SURFACE%20WATER%20QUALITY%20STANDARDS&ID=62-302.532>

Base File Data for Estuaries: Definitions:

- **County:** Name of county adjacent to the system.
- **Name:** System name that LAKEWATCH uses for the station.
- **GNIS Number:** Number created by USGS's Geographic Names Information System.
- **Water Body Type:** Four different types of systems; lakes, estuaries, river/streams and springs.
- **Period of Record (years):** Number of years a system has been in the LAKEWATCH program.
- **Latitude and Longitude:** Coordinates identifying the exact location of station 1 for each system.

Table 1. Base File Data.

County	Franklin
Name	Alligator Harbor-1
GNIS Number	308389
Water Body Type	Estuary
Period of Record (years, range)	13 (2001 to 2019)
Latitude	29.9217
Longitude	-84.4158

Long-Term Data for Estuaries: Definitions

The following long-term data are the primary trophic state parameters collected by LAKEWATCH volunteers and classification variables color and specific conductance (LAKEWATCH recently began analyzing samples quarterly for color and specific conductance):

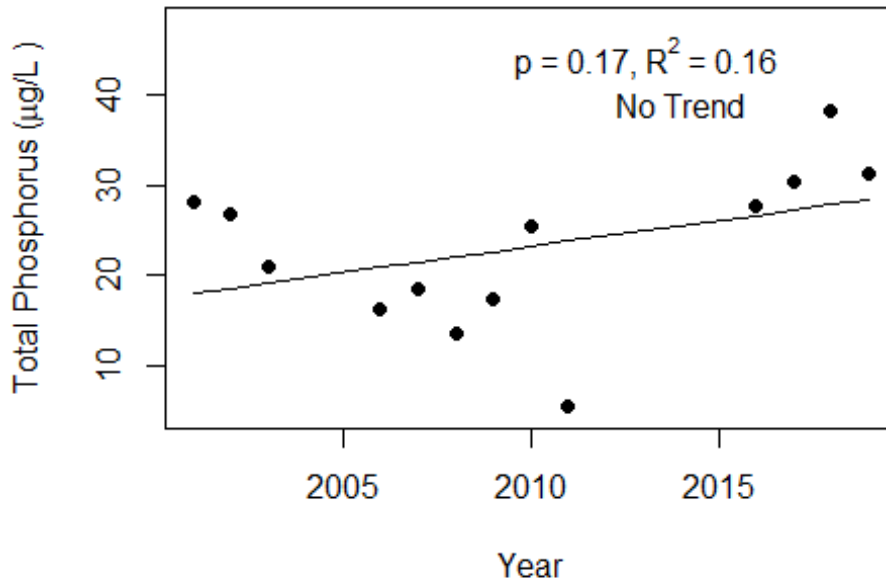
- **Total Phosphorus ($\mu\text{g/L}$):** The nutrient most often limiting growth of plant/algae in Florida's fresh and saltwater environments.
- **Total Nitrogen ($\mu\text{g/L}$):** Another nutrient needed for aquatic plant/algae growth but only limiting when nitrogen to phosphorus ratios are generally less than 10.
- **Chlorophyll-uncorrected ($\mu\text{g/L}$):** Chlorophyll concentrations are used to measure relative abundances of open water algal population.
- **Secchi (ft), Secchi (m):** Secchi measurements are estimates of water clarity (how far one can see into the water) and are listed with English and metric units.
- **Color (Pt-Co Units):** LAKEWATCH measures true color, which is the color of the water after particles have been filtered out.
- **Specific Conductance ($\mu\text{S/cm@25}^\circ\text{C}$), Salinity (ppt):** Measurement of the ability of water to conduct electricity and can be used to estimate the amount of dissolved materials in water.

Table 2. Long-term trophic state data collected monthly by LAKEWATCH volunteers and color and specific conductance/salinity (collected quarterly).

Parameter	Minimum and Maximum Annual Geometric Means	Grand Geometric Mean (Sampling years)
Total Phosphorus ($\mu\text{g/L}$)	5 - 34	20 (13)
Total Nitrogen ($\mu\text{g/L}$)	154 - 456	301 (13)
Chlorophyll- uncorrected ($\mu\text{g/L}$)	0 - 9	3 (13)
Secchi (ft)	2.3 - 5.4	3.9 (12)
Secchi (m)	0.7 - 1.7	1.2 (12)
Color (Pt-Co Units)	3 - 39	8 (13)
Specific Conductance ($\mu\text{S/cm@25 C}$)	16432 - 49993	37505 (13)
Salinity (ppt)	10 - 31	23 (13)

Figure 1 and Figure 2. Trend plots of annual average total phosphorus and annual average total nitrogen versus year. The R^2 value indicates the strength of the relations (ranges from 0.0 to 1.0; higher the R^2 the stronger the relation) and the p value indicates if the relation is significant ($p < 0.05$ is significant). Trend status are reported on plots.

Alligator Harbor-1 (Franklin)



Alligator Harbor-1 (Franklin)

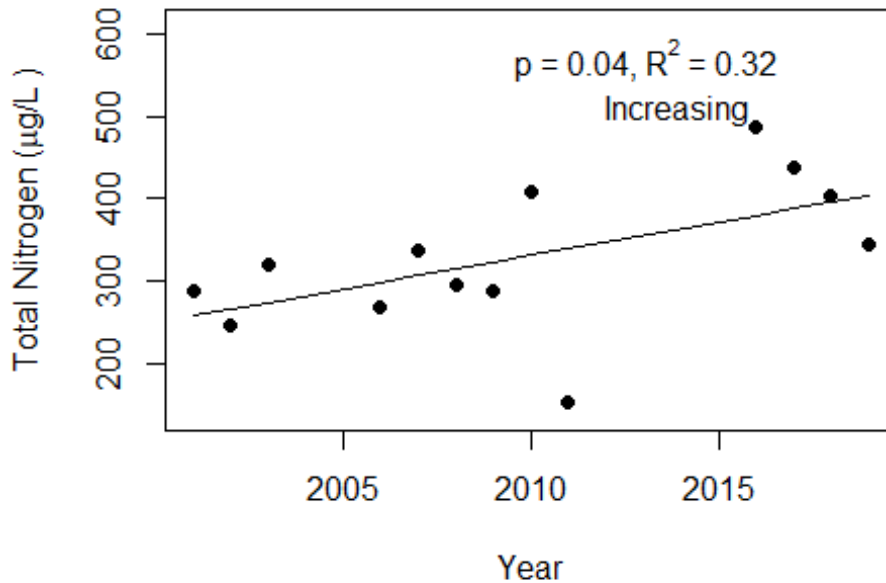
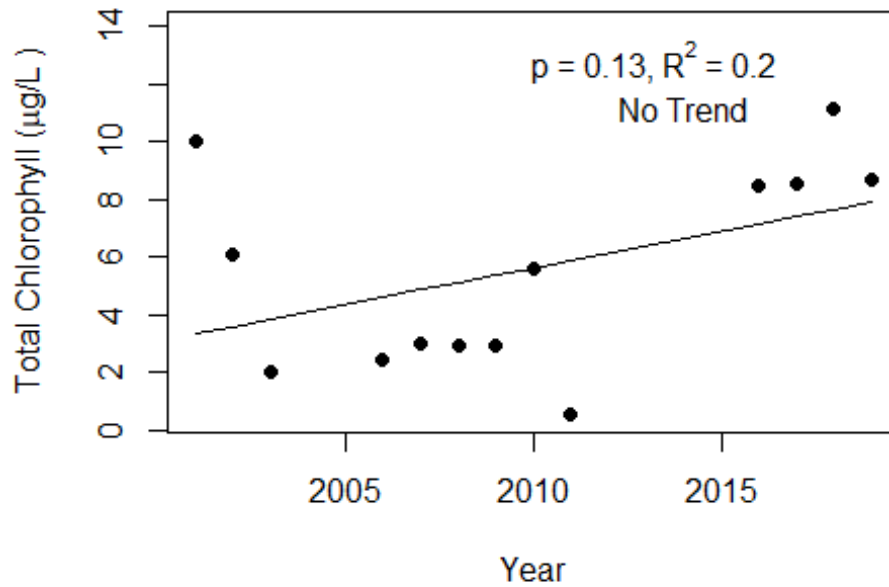
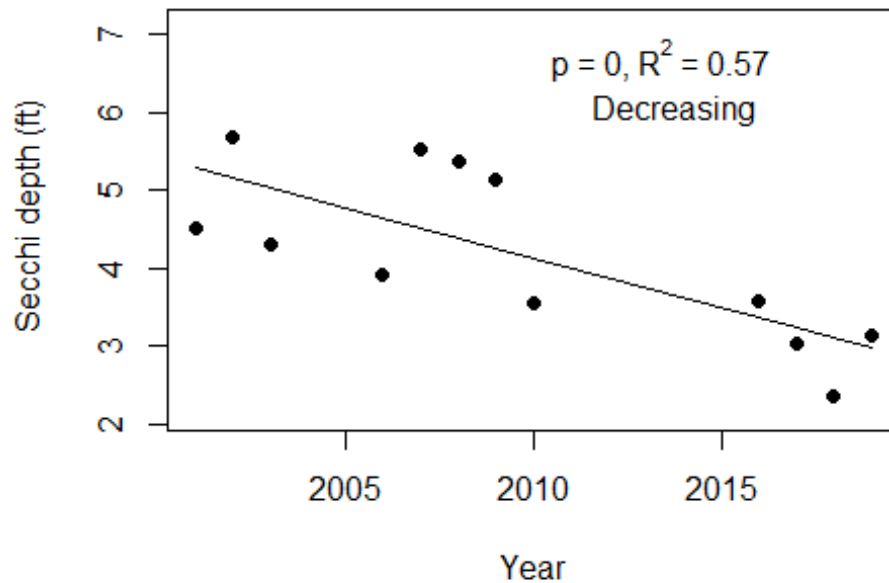


Figure 3 and Figure 4. Trend plots of annual average chlorophyll and annual average Secchi versus year. The R^2 value indicates the strength of the relations (ranges from 0.0 to 1.0; higher the R^2 the stronger the relations and the p value indicates if the relation is significant ($p < 0.05$ is significant). Trend status are reported on plots.

Alligator Harbor-1 (Franklin)



Alligator Harbor-1 (Franklin)



**LAKEWATCH Report for Alligator Harbor-2 in Franklin County
Estuary and Estuary Segment: Apalachicola Bay and Alligator Harbor Alligator Harbor
Using Data Downloaded 1/17/2020**

Introduction for Estuaries

This report summarizes data collected on systems that have been part of the LAKEWATCH program. Data are from the period of record for individual systems. The first part of this summary lists background data for each system, the second part lists the long-term data averages and ranges and the final part are trend plots for nutrients, chlorophyll and Secchi depth. Plots were only made for systems with five or more years of data.

The near shore Florida coastline is separated into estuary and estuary segments within the estuary. Deeper coastal waters are separated into coastal nutrient regions and coastal nutrient segments within the regions. Numeric nutrient criteria are established for all estuary segments, including criteria for total nitrogen, total phosphorus, and chlorophyll *a*. For open ocean coastal waters, numeric criteria are established for chlorophyll *a*, that is derived from satellite remote sensing techniques. For those locations without defined segments there are narrative nutrient criteria (e.g., Florida Keys Halo Zone).

The maps defining individual estuaries and coastal segments can be found at the following link:
<https://www.flrules.org/Gateway/reference.asp?No=Ref-05420>

The individual nutrient criteria can be found at the following link:
<https://www.flrules.org/gateway/RuleNo.asp?title=SURFACE%20WATER%20QUALITY%20STANDARDS&ID=62-302.532>

Base File Data for Estuaries: Definitions:

- **County:** Name of county adjacent to the system.
- **Name:** System name that LAKEWATCH uses for the station.
- **GNIS Number:** Number created by USGS's Geographic Names Information System.
- **Water Body Type:** Four different types of systems; lakes, estuaries, river/streams and springs.
- **Period of Record (years):** Number of years a system has been in the LAKEWATCH program.
- **Latitude and Longitude:** Coordinates identifying the exact location of station 1 for each system.

Table 1. Base File Data.

County	Franklin
Name	Alligator Harbor-2
GNIS Number	308389
Water Body Type	Estuary
Period of Record (years, range)	13 (2001 to 2019)
Latitude	29.9197
Longitude	-84.4418

Long-Term Data for Estuaries: Definitions

The following long-term data are the primary trophic state parameters collected by LAKEWATCH volunteers and classification variables color and specific conductance (LAKEWATCH recently began analyzing samples quarterly for color and specific conductance):

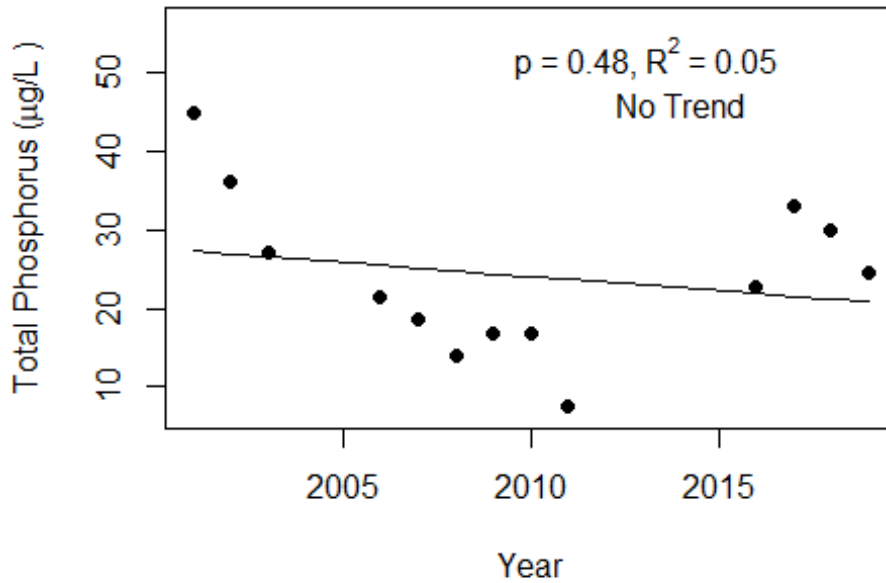
- **Total Phosphorus ($\mu\text{g/L}$):** The nutrient most often limiting growth of plant/algae in Florida's fresh and saltwater environments.
- **Total Nitrogen ($\mu\text{g/L}$):** Another nutrient needed for aquatic plant/algae growth but only limiting when nitrogen to phosphorus ratios are generally less than 10.
- **Chlorophyll-uncorrected ($\mu\text{g/L}$):** Chlorophyll concentrations are used to measure relative abundances of open water algal population.
- **Secchi (ft), Secchi (m):** Secchi measurements are estimates of water clarity (how far one can see into the water) and are listed with English and metric units.
- **Color (Pt-Co Units):** LAKEWATCH measures true color, which is the color of the water after particles have been filtered out.
- **Specific Conductance ($\mu\text{S/cm@25}^\circ\text{C}$), Salinity (ppt):** Measurement of the ability of water to conduct electricity and can be used to estimate the amount of dissolved materials in water.

Table 2. Long-term trophic state data collected monthly by LAKEWATCH volunteers and color and specific conductance/salinity (collected quarterly).

Parameter	Minimum and Maximum Annual Geometric Means	Grand Geometric Mean (Sampling years)
Total Phosphorus ($\mu\text{g/L}$)	7 - 44	21 (13)
Total Nitrogen ($\mu\text{g/L}$)	167 - 534	296 (13)
Chlorophyll- uncorrected ($\mu\text{g/L}$)	0 - 12	4 (13)
Secchi (ft)	2.6 - 5.0	3.9 (12)
Secchi (m)	0.8 - 1.5	1.2 (12)
Color (Pt-Co Units)	3 - 26	8 (13)
Specific Conductance ($\mu\text{S/cm@25 C}$)	25495 - 49304	39403 (13)
Salinity (ppt)	16 - 31	24 (13)

Figure 1 and Figure 2. Trend plots of annual average total phosphorus and annual average total nitrogen versus year. The R^2 value indicates the strength of the relations (ranges from 0.0 to 1.0; higher the R^2 the stronger the relation) and the p value indicates if the relation is significant ($p < 0.05$ is significant). Trend status are reported on plots.

Alligator Harbor-2 (Franklin)



Alligator Harbor-2 (Franklin)

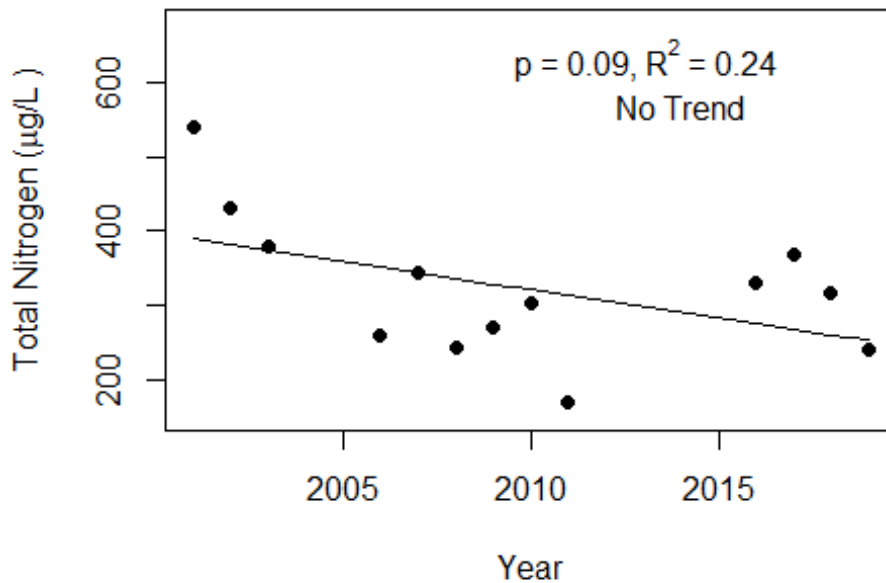
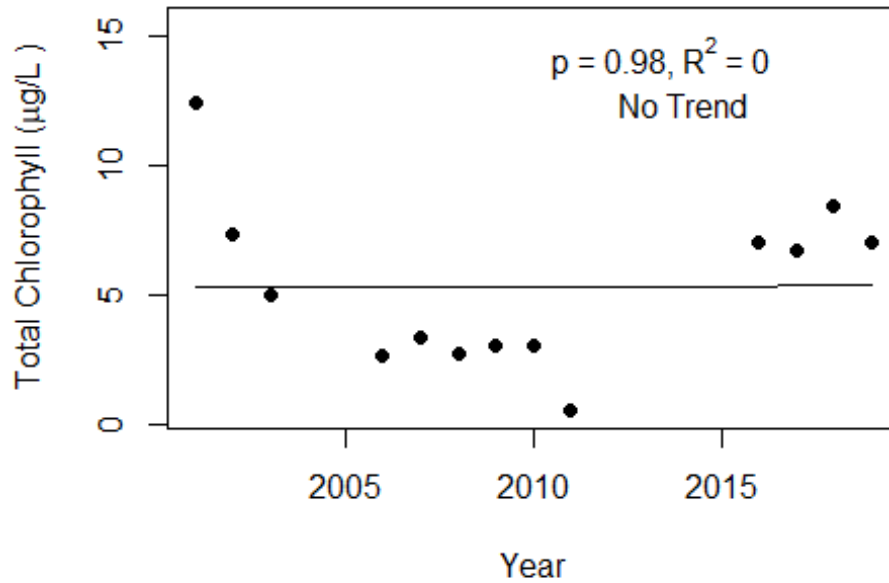
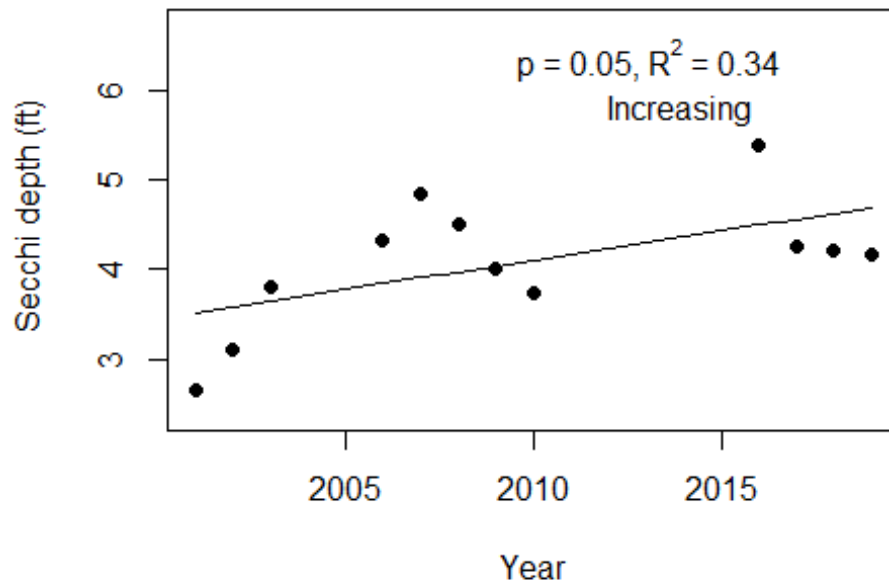


Figure 3 and Figure 4. Trend plots of annual average chlorophyll and annual average Secchi versus year. The R^2 value indicates the strength of the relations (ranges from 0.0 to 1.0; higher the R^2 the stronger the relations and the p value indicates if the relation is significant ($p < 0.05$ is significant). Trend status are reported on plots.

Alligator Harbor-2 (Franklin)



Alligator Harbor-2 (Franklin)



**LAKWATCH Report for Alligator Harbor-3 in Franklin County
Estuary and Estuary Segment: Apalachicola Bay and Alligator Harbor Alligator Harbor
Using Data Downloaded 1/17/2020**

Introduction for Estuaries

This report summarizes data collected on systems that have been part of the LAKWATCH program. Data are from the period of record for individual systems. The first part of this summary lists background data for each system, the second part lists the long-term data averages and ranges and the final part are trend plots for nutrients, chlorophyll and Secchi depth. Plots were only made for systems with five or more years of data.

The near shore Florida coastline is separated into estuary and estuary segments within the estuary. Deeper coastal waters are separated into coastal nutrient regions and coastal nutrient segments within the regions. Numeric nutrient criteria are established for all estuary segments, including criteria for total nitrogen, total phosphorus, and chlorophyll *a*. For open ocean coastal waters, numeric criteria are established for chlorophyll *a*, that is derived from satellite remote sensing techniques. For those locations without defined segments there are narrative nutrient criteria (e.g., Florida Keys Halo Zone).

The maps defining individual estuaries and coastal segments can be found at the following link:
<https://www.flrules.org/Gateway/reference.asp?No=Ref-05420>

The individual nutrient criteria can be found at the following link:
<https://www.flrules.org/gateway/RuleNo.asp?title=SURFACE%20WATER%20QUALITY%20STANDARDS&ID=62-302.532>

Base File Data for Estuaries: Definitions:

- **County:** Name of county adjacent to the system.
- **Name:** System name that LAKWATCH uses for the station.
- **GNIS Number:** Number created by USGS's Geographic Names Information System.
- **Water Body Type:** Four different types of systems; lakes, estuaries, river/streams and springs.
- **Period of Record (years):** Number of years a system has been in the LAKWATCH program.
- **Latitude and Longitude:** Coordinates identifying the exact location of station 1 for each system.

Table 1. Base File Data.

County	Franklin
Name	Alligator Harbor-3
GNIS Number	308389
Water Body Type	Estuary
Period of Record (years, range)	13 (2001 to 2019)
Latitude	29.9193
Longitude	-84.4052

Long-Term Data for Estuaries: Definitions

The following long-term data are the primary trophic state parameters collected by LAKEWATCH volunteers and classification variables color and specific conductance (LAKEWATCH recently began analyzing samples quarterly for color and specific conductance):

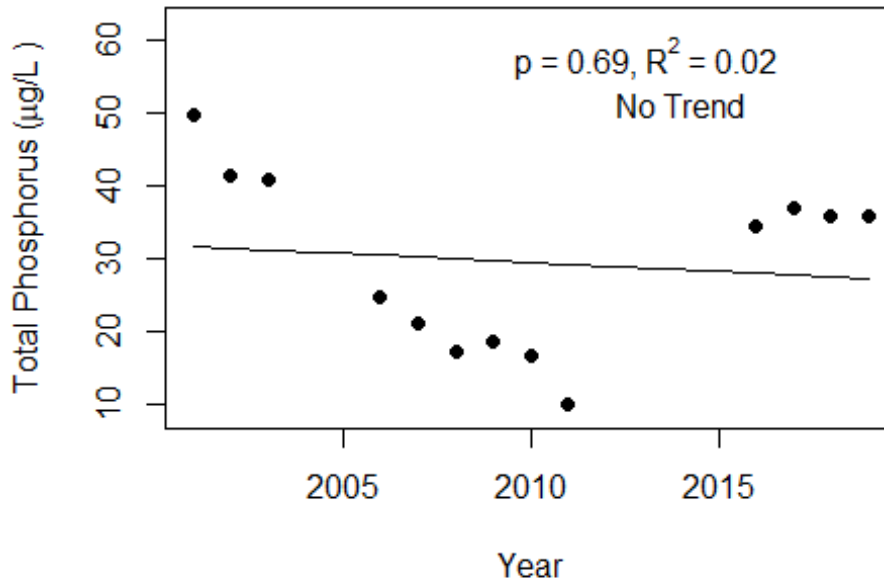
- **Total Phosphorus ($\mu\text{g/L}$):** The nutrient most often limiting growth of plant/algae in Florida's fresh and saltwater environments.
- **Total Nitrogen ($\mu\text{g/L}$):** Another nutrient needed for aquatic plant/algae growth but only limiting when nitrogen to phosphorus ratios are generally less than 10.
- **Chlorophyll-uncorrected ($\mu\text{g/L}$):** Chlorophyll concentrations are used to measure relative abundances of open water algal population.
- **Secchi (ft), Secchi (m):** Secchi measurements are estimates of water clarity (how far one can see into the water) and are listed with English and metric units.
- **Color (Pt-Co Units):** LAKEWATCH measures true color, which is the color of the water after particles have been filtered out.
- **Specific Conductance ($\mu\text{S/cm@25}^\circ\text{C}$), Salinity (ppt):** Measurement of the ability of water to conduct electricity and can be used to estimate the amount of dissolved materials in water.

Table 2. Long-term trophic state data collected monthly by LAKEWATCH volunteers and color and specific conductance/salinity (collected quarterly).

Parameter	Minimum and Maximum Annual Geometric Means	Grand Geometric Mean (Sampling years)
Total Phosphorus ($\mu\text{g/L}$)	9 - 49	25 (13)
Total Nitrogen ($\mu\text{g/L}$)	173 - 603	347 (13)
Chlorophyll- uncorrected ($\mu\text{g/L}$)	1 - 13	5 (13)
Secchi (ft)	2.2 - 4.6	3.2 (13)
Secchi (m)	0.7 - 1.4	1.0 (13)
Color (Pt-Co Units)	2 - 24	7 (13)
Specific Conductance ($\mu\text{S/cm@25 C}$)	22450 - 49304	38389 (13)
Salinity (ppt)	14 - 31	24 (13)

Figure 1 and Figure 2. Trend plots of annual average total phosphorus and annual average total nitrogen versus year. The R^2 value indicates the strength of the relations (ranges from 0.0 to 1.0; higher the R^2 the stronger the relation) and the p value indicates if the relation is significant ($p < 0.05$ is significant). Trend status are reported on plots.

Alligator Harbor-3 (Franklin)



Alligator Harbor-3 (Franklin)

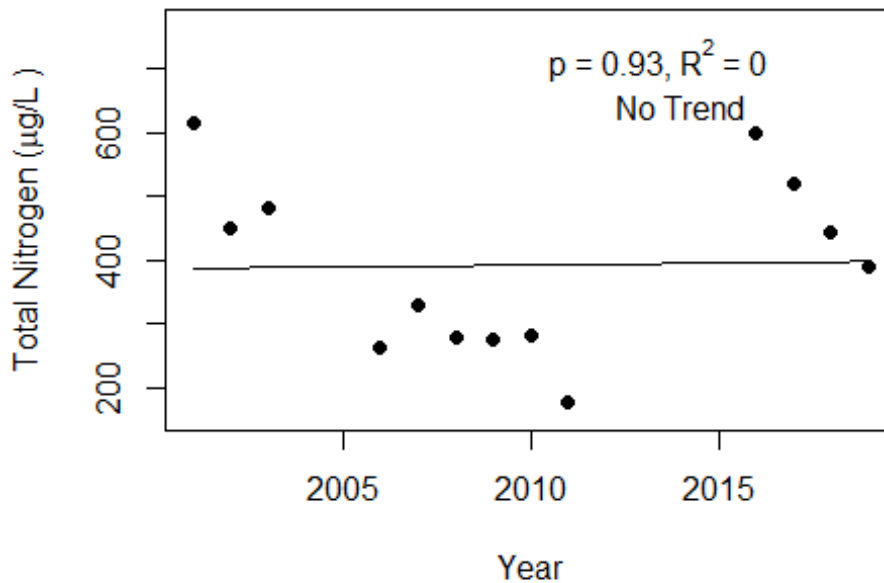
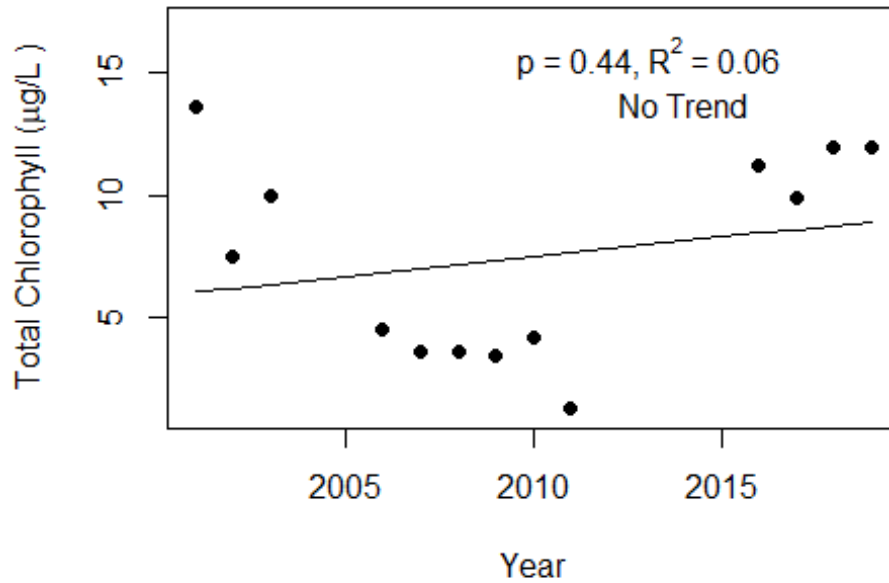
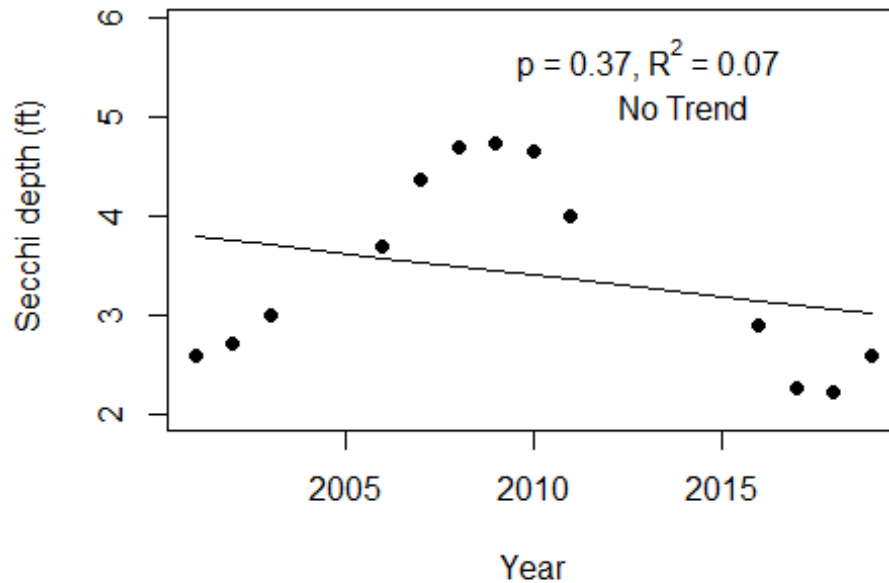


Figure 3 and Figure 4. Trend plots of annual average chlorophyll and annual average Secchi versus year. The R^2 value indicates the strength of the relations (ranges from 0.0 to 1.0; higher the R^2 the stronger the relations and the p value indicates if the relation is significant ($p < 0.05$ is significant). Trend status are reported on plots.

Alligator Harbor-3 (Franklin)



Alligator Harbor-3 (Franklin)



**LAKEWATCH Report for Alligator Harbor-4 in Franklin County
Estuary and Estuary Segment: Apalachicola Bay and Alligator Harbor Alligator Harbor
Using Data Downloaded 1/17/2020**

Introduction for Estuaries

This report summarizes data collected on systems that have been part of the LAKEWATCH program. Data are from the period of record for individual systems. The first part of this summary lists background data for each system, the second part lists the long-term data averages and ranges and the final part are trend plots for nutrients, chlorophyll and Secchi depth. Plots were only made for systems with five or more years of data.

The near shore Florida coastline is separated into estuary and estuary segments within the estuary. Deeper coastal waters are separated into coastal nutrient regions and coastal nutrient segments within the regions. Numeric nutrient criteria are established for all estuary segments, including criteria for total nitrogen, total phosphorus, and chlorophyll *a*. For open ocean coastal waters, numeric criteria are established for chlorophyll *a*, that is derived from satellite remote sensing techniques. For those locations without defined segments there are narrative nutrient criteria (e.g., Florida Keys Halo Zone).

The maps defining individual estuaries and coastal segments can be found at the following link:
<https://www.flrules.org/Gateway/reference.asp?No=Ref-05420>

The individual nutrient criteria can be found at the following link:
<https://www.flrules.org/gateway/RuleNo.asp?title=SURFACE%20WATER%20QUALITY%20STANDARDS&ID=62-302.532>

Base File Data for Estuaries: Definitions:

- **County:** Name of county adjacent to the system.
- **Name:** System name that LAKEWATCH uses for the station.
- **GNIS Number:** Number created by USGS's Geographic Names Information System.
- **Water Body Type:** Four different types of systems; lakes, estuaries, river/streams and springs.
- **Period of Record (years):** Number of years a system has been in the LAKEWATCH program.
- **Latitude and Longitude:** Coordinates identifying the exact location of station 1 for each system.

Table 1. Base File Data.

County	Franklin
Name	Alligator Harbor-4
GNIS Number	308389
Water Body Type	Estuary
Period of Record (years, range)	13 (2001 to 2019)
Latitude	29.904
Longitude	-84.3715

Long-Term Data for Estuaries: Definitions

The following long-term data are the primary trophic state parameters collected by LAKEWATCH volunteers and classification variables color and specific conductance (LAKEWATCH recently began analyzing samples quarterly for color and specific conductance):

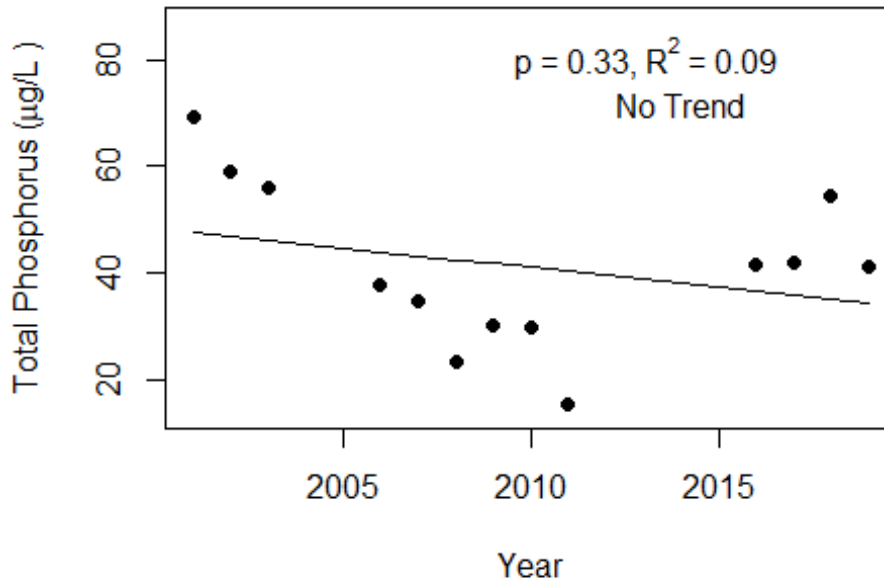
- **Total Phosphorus ($\mu\text{g/L}$):** The nutrient most often limiting growth of plant/algae in Florida's fresh and saltwater environments.
- **Total Nitrogen ($\mu\text{g/L}$):** Another nutrient needed for aquatic plant/algae growth but only limiting when nitrogen to phosphorus ratios are generally less than 10.
- **Chlorophyll-uncorrected ($\mu\text{g/L}$):** Chlorophyll concentrations are used to measure relative abundances of open water algal population.
- **Secchi (ft), Secchi (m):** Secchi measurements are estimates of water clarity (how far one can see into the water) and are listed with English and metric units.
- **Color (Pt-Co Units):** LAKEWATCH measures true color, which is the color of the water after particles have been filtered out.
- **Specific Conductance ($\mu\text{S/cm@25}^\circ\text{C}$), Salinity (ppt):** Measurement of the ability of water to conduct electricity and can be used to estimate the amount of dissolved materials in water.

Table 2. Long-term trophic state data collected monthly by LAKEWATCH volunteers and color and specific conductance/salinity (collected quarterly).

Parameter	Minimum and Maximum Annual Geometric Means	Grand Geometric Mean (Sampling years)
Total Phosphorus ($\mu\text{g/L}$)	14 - 69	35 (13)
Total Nitrogen ($\mu\text{g/L}$)	258 - 822	469 (13)
Chlorophyll- uncorrected ($\mu\text{g/L}$)	1 - 20	7 (13)
Secchi (ft)	1.5 - 2.9	2.2 (13)
Secchi (m)	0.5 - 0.9	0.7 (13)
Color (Pt-Co Units)	3 - 16	9 (13)
Specific Conductance ($\mu\text{S/cm@25 C}$)	31464 - 48581	39527 (13)
Salinity (ppt)	19 - 30	25 (13)

Figure 1 and Figure 2. Trend plots of annual average total phosphorus and annual average total nitrogen versus year. The R^2 value indicates the strength of the relations (ranges from 0.0 to 1.0; higher the R^2 the stronger the relation) and the p value indicates if the relation is significant ($p < 0.05$ is significant). Trend status are reported on plots.

Alligator Harbor-4 (Franklin)



Alligator Harbor-4 (Franklin)

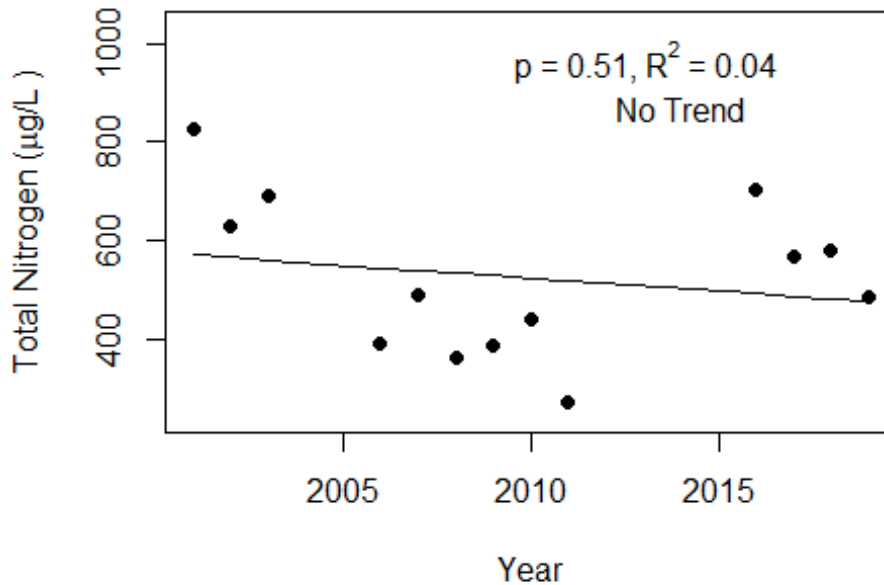
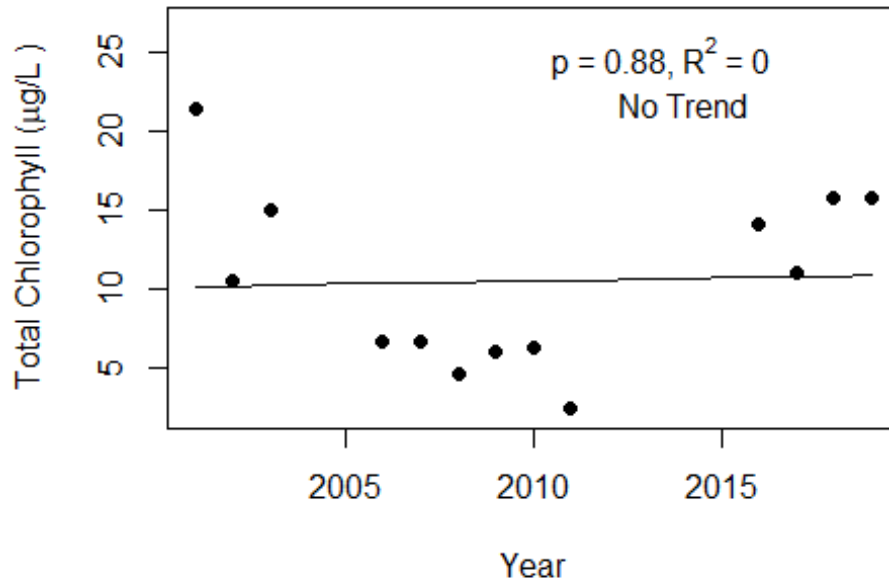
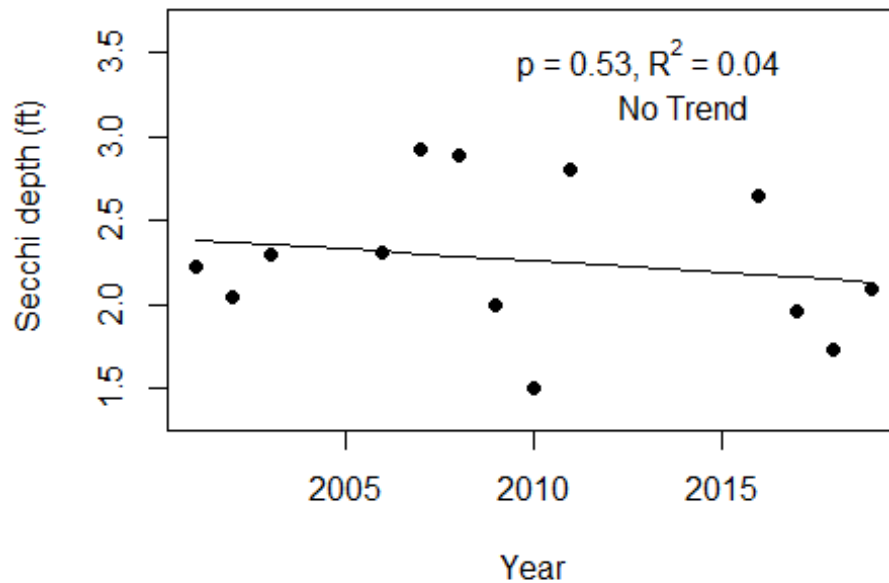


Figure 3 and Figure 4. Trend plots of annual average chlorophyll and annual average Secchi versus year. The R^2 value indicates the strength of the relations (ranges from 0.0 to 1.0; higher the R^2 the stronger the relations and the p value indicates if the relation is significant ($p < 0.05$ is significant). Trend status are reported on plots.

Alligator Harbor-4 (Franklin)



Alligator Harbor-4 (Franklin)



LAKEWATCH Report for Alligator Harbor-5 in Franklin County
Estuary and Estuary Segment: Apalachicola Bay and Alligator Harbor Alligator Harbor
Using Data Downloaded 1/17/2020

Introduction for Estuaries

This report summarizes data collected on systems that have been part of the LAKEWATCH program. Data are from the period of record for individual systems. The first part of this summary lists background data for each system, the second part lists the long-term data averages and ranges and the final part are trend plots for nutrients, chlorophyll and Secchi depth. Plots were only made for systems with five or more years of data.

The near shore Florida coastline is separated into estuary and estuary segments within the estuary. Deeper coastal waters are separated into coastal nutrient regions and coastal nutrient segments within the regions. Numeric nutrient criteria are established for all estuary segments, including criteria for total nitrogen, total phosphorus, and chlorophyll *a*. For open ocean coastal waters, numeric criteria are established for chlorophyll *a*, that is derived from satellite remote sensing techniques. For those locations without defined segments there are narrative nutrient criteria (e.g., Florida Keys Halo Zone).

The maps defining individual estuaries and coastal segments can be found at the following link:
<https://www.flrules.org/Gateway/reference.asp?No=Ref-05420>

The individual nutrient criteria can be found at the following link:
<https://www.flrules.org/gateway/RuleNo.asp?title=SURFACE%20WATER%20QUALITY%20STANDARDS&ID=62-302.532>

Base File Data for Estuaries: Definitions:

- **County:** Name of county adjacent to the system.
- **Name:** System name that LAKEWATCH uses for the station.
- **GNIS Number:** Number created by USGS's Geographic Names Information System.
- **Water Body Type:** Four different types of systems; lakes, estuaries, river/streams and springs.
- **Period of Record (years):** Number of years a system has been in the LAKEWATCH program.
- **Latitude and Longitude:** Coordinates identifying the exact location of station 1 for each system.

Table 1. Base File Data.

County	Franklin
Name	Alligator Harbor-5
GNIS Number	308389
Water Body Type	Estuary
Period of Record (years, range)	13 (2001 to 2019)
Latitude	29.9063
Longitude	-84.418

Long-Term Data for Estuaries: Definitions

The following long-term data are the primary trophic state parameters collected by LAKEWATCH volunteers and classification variables color and specific conductance (LAKEWATCH recently began analyzing samples quarterly for color and specific conductance):

- **Total Phosphorus ($\mu\text{g/L}$):** The nutrient most often limiting growth of plant/algae in Florida's fresh and saltwater environments.
- **Total Nitrogen ($\mu\text{g/L}$):** Another nutrient needed for aquatic plant/algae growth but only limiting when nitrogen to phosphorus ratios are generally less than 10.
- **Chlorophyll-uncorrected ($\mu\text{g/L}$):** Chlorophyll concentrations are used to measure relative abundances of open water algal population.
- **Secchi (ft), Secchi (m):** Secchi measurements are estimates of water clarity (how far one can see into the water) and are listed with English and metric units.
- **Color (Pt-Co Units):** LAKEWATCH measures true color, which is the color of the water after particles have been filtered out.
- **Specific Conductance ($\mu\text{S/cm@25}^\circ\text{C}$), Salinity (ppt):** Measurement of the ability of water to conduct electricity and can be used to estimate the amount of dissolved materials in water.

Table 2. Long-term trophic state data collected monthly by LAKEWATCH volunteers and color and specific conductance/salinity (collected quarterly).

Parameter	Minimum and Maximum Annual Geometric Means	Grand Geometric Mean (Sampling years)
Total Phosphorus ($\mu\text{g/L}$)	13 - 77	32 (13)
Total Nitrogen ($\mu\text{g/L}$)	255 - 872	409 (13)
Chlorophyll- uncorrected ($\mu\text{g/L}$)	2 - 21	7 (13)
Secchi (ft)	1.7 - 3.6	2.7 (13)
Secchi (m)	0.5 - 1.1	0.8 (13)
Color (Pt-Co Units)	3 - 21	8 (13)
Specific Conductance ($\mu\text{S/cm@25 C}$)	18735 - 48581	37832 (13)
Salinity (ppt)	11 - 30	23 (13)

Figure 1 and Figure 2. Trend plots of annual average total phosphorus and annual average total nitrogen versus year. The R^2 value indicates the strength of the relations (ranges from 0.0 to 1.0; higher the R^2 the stronger the relation) and the p value indicates if the relation is significant ($p < 0.05$ is significant). Trend status are reported on plots.

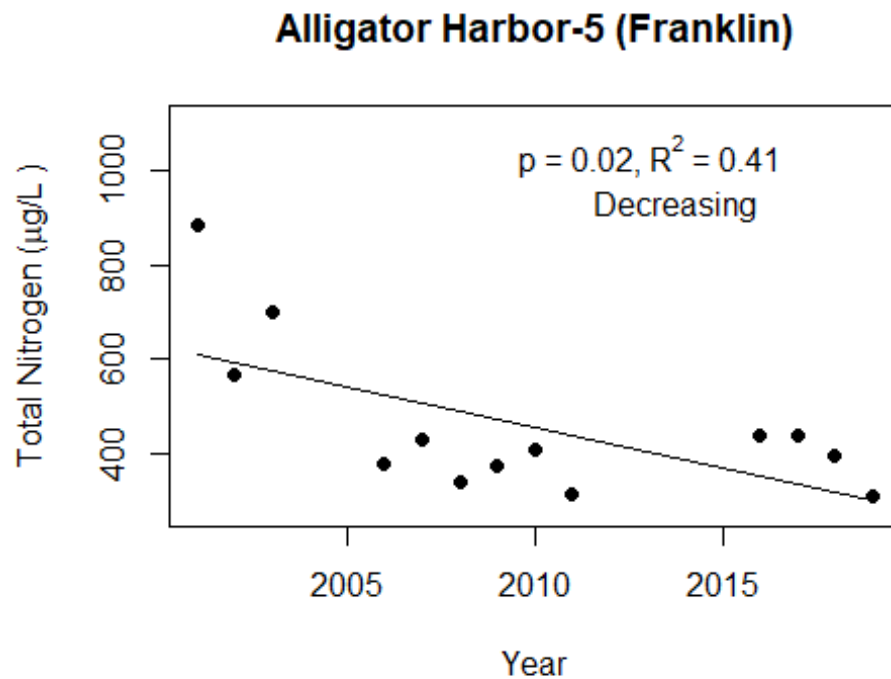
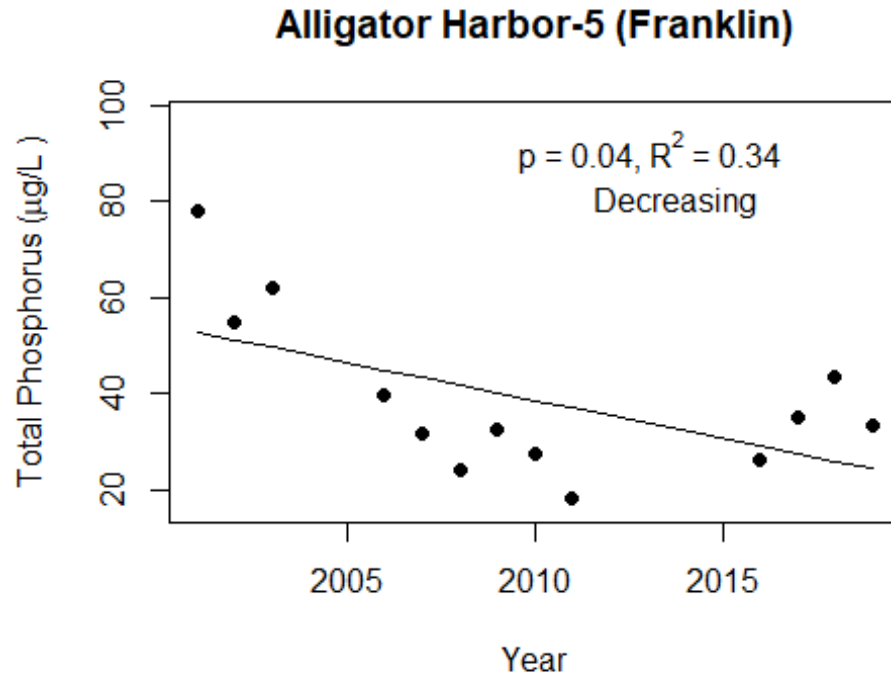
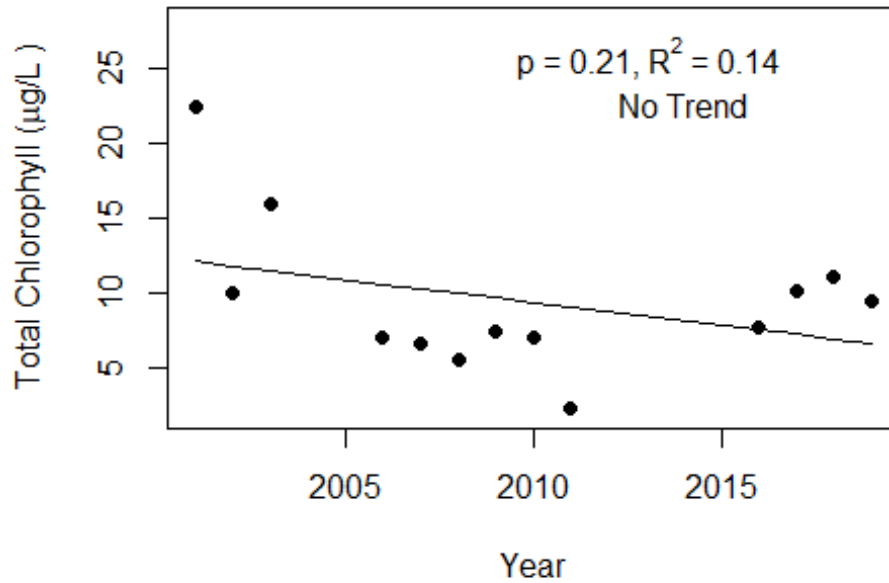
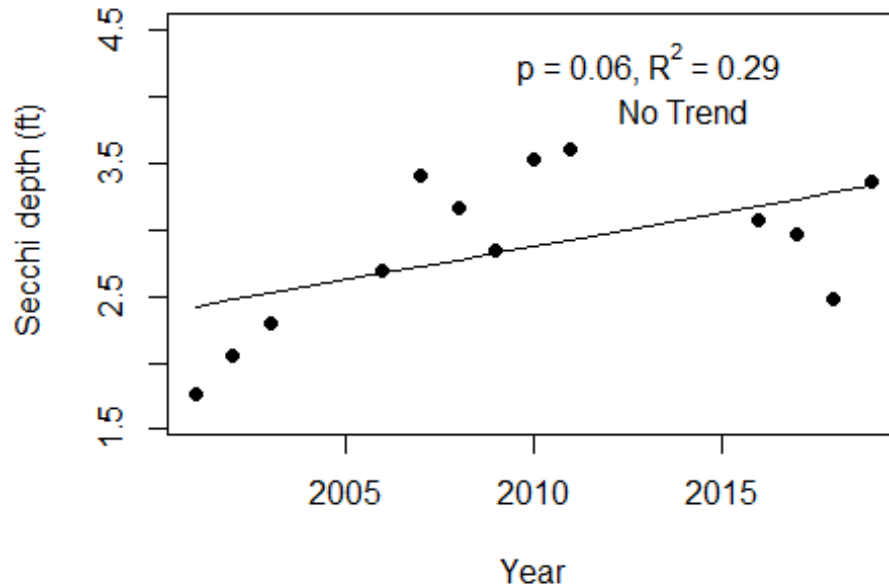


Figure 3 and Figure 4. Trend plots of annual average chlorophyll and annual average Secchi versus year. The R^2 value indicates the strength of the relations (ranges from 0.0 to 1.0; higher the R^2 the stronger the relations and the p value indicates if the relation is significant ($p < 0.05$ is significant). Trend status are reported on plots.

Alligator Harbor-5 (Franklin)



Alligator Harbor-5 (Franklin)



**LAKEWATCH Report for Alligator Harbor-6 in Franklin County
Estuary and Estuary Segment: Apalachicola Bay and Alligator Harbor Alligator Harbor
Using Data Downloaded 1/17/2020**

Introduction for Estuaries

This report summarizes data collected on systems that have been part of the LAKEWATCH program. Data are from the period of record for individual systems. The first part of this summary lists background data for each system, the second part lists the long-term data averages and ranges and the final part are trend plots for nutrients, chlorophyll and Secchi depth. Plots were only made for systems with five or more years of data.

The near shore Florida coastline is separated into estuary and estuary segments within the estuary. Deeper coastal waters are separated into coastal nutrient regions and coastal nutrient segments within the regions. Numeric nutrient criteria are established for all estuary segments, including criteria for total nitrogen, total phosphorus, and chlorophyll *a*. For open ocean coastal waters, numeric criteria are established for chlorophyll *a*, that is derived from satellite remote sensing techniques. For those locations without defined segments there are narrative nutrient criteria (e.g., Florida Keys Halo Zone).

The maps defining individual estuaries and coastal segments can be found at the following link:
<https://www.flrules.org/Gateway/reference.asp?No=Ref-05420>

The individual nutrient criteria can be found at the following link:
<https://www.flrules.org/gateway/RuleNo.asp?title=SURFACE%20WATER%20QUALITY%20STANDARDS&ID=62-302.532>

Base File Data for Estuaries: Definitions:

- **County:** Name of county adjacent to the system.
- **Name:** System name that LAKEWATCH uses for the station.
- **GNIS Number:** Number created by USGS's Geographic Names Information System.
- **Water Body Type:** Four different types of systems; lakes, estuaries, river/streams and springs.
- **Period of Record (years):** Number of years a system has been in the LAKEWATCH program.
- **Latitude and Longitude:** Coordinates identifying the exact location of station 1 for each system.

Table 1. Base File Data.

County	Franklin
Name	Alligator Harbor-6
GNIS Number	308389
Water Body Type	Estuary
Period of Record (years, range)	13 (2001 to 2019)
Latitude	29.8982
Longitude	-84.3777

Long-Term Data for Estuaries: Definitions

The following long-term data are the primary trophic state parameters collected by LAKEWATCH volunteers and classification variables color and specific conductance (LAKEWATCH recently began analyzing samples quarterly for color and specific conductance):

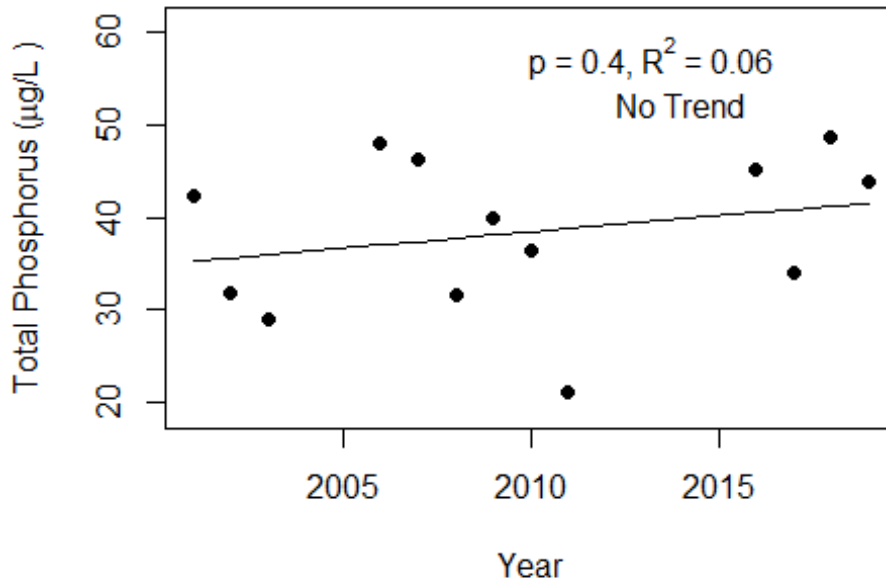
- **Total Phosphorus ($\mu\text{g/L}$):** The nutrient most often limiting growth of plant/algae in Florida's fresh and saltwater environments.
- **Total Nitrogen ($\mu\text{g/L}$):** Another nutrient needed for aquatic plant/algae growth but only limiting when nitrogen to phosphorus ratios are generally less than 10.
- **Chlorophyll-uncorrected ($\mu\text{g/L}$):** Chlorophyll concentrations are used to measure relative abundances of open water algal population.
- **Secchi (ft), Secchi (m):** Secchi measurements are estimates of water clarity (how far one can see into the water) and are listed with English and metric units.
- **Color (Pt-Co Units):** LAKEWATCH measures true color, which is the color of the water after particles have been filtered out.
- **Specific Conductance ($\mu\text{S/cm@25}^\circ\text{C}$), Salinity (ppt):** Measurement of the ability of water to conduct electricity and can be used to estimate the amount of dissolved materials in water.

Table 2. Long-term trophic state data collected monthly by LAKEWATCH volunteers and color and specific conductance/salinity (collected quarterly).

Parameter	Minimum and Maximum Annual Geometric Means	Grand Geometric Mean (Sampling years)
Total Phosphorus ($\mu\text{g/L}$)	18 - 45	33 (13)
Total Nitrogen ($\mu\text{g/L}$)	305 - 761	451 (13)
Chlorophyll- uncorrected ($\mu\text{g/L}$)	2 - 15	7 (13)
Secchi (ft)	1.3 - 3.4	2.2 (12)
Secchi (m)	0.4 - 1.0	0.7 (12)
Color (Pt-Co Units)	4 - 23	10 (13)
Specific Conductance ($\mu\text{S/cm@25 C}$)	26870 - 49651	38387 (13)
Salinity (ppt)	17 - 31	24 (13)

Figure 1 and Figure 2. Trend plots of annual average total phosphorus and annual average total nitrogen versus year. The R^2 value indicates the strength of the relations (ranges from 0.0 to 1.0; higher the R^2 the stronger the relation) and the p value indicates if the relation is significant ($p < 0.05$ is significant). Trend status are reported on plots.

Alligator Harbor-6 (Franklin)



Alligator Harbor-6 (Franklin)

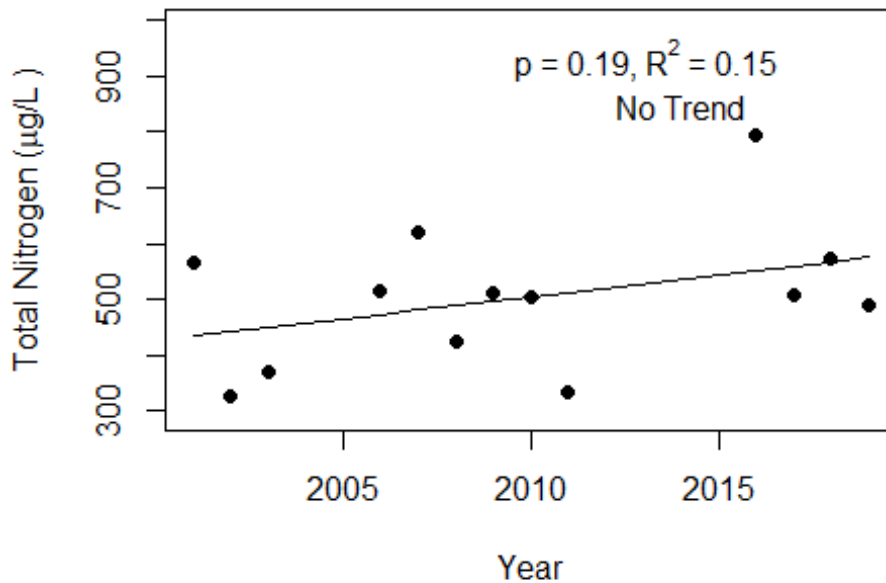
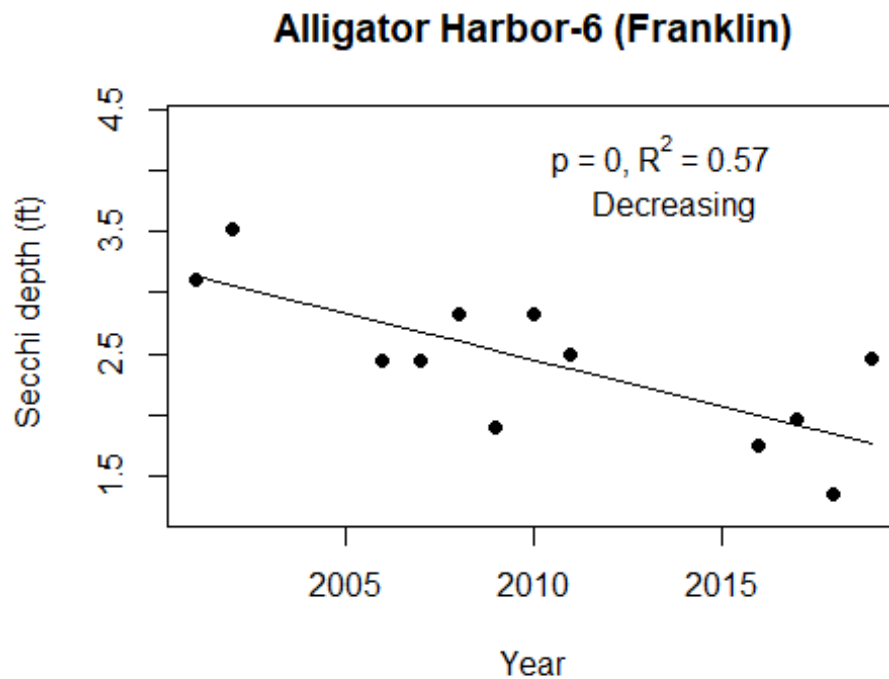
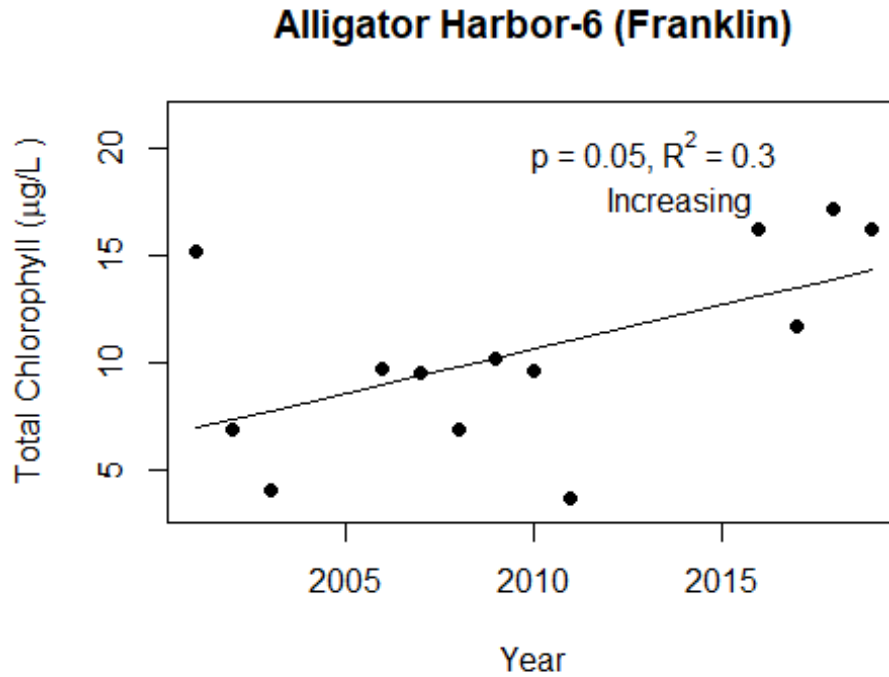


Figure 3 and Figure 4. Trend plots of annual average chlorophyll and annual average Secchi versus year. The R^2 value indicates the strength of the relations (ranges from 0.0 to 1.0; higher the R^2 the stronger the relations and the p value indicates if the relation is significant ($p < 0.05$ is significant). Trend status are reported on plots.



LAKEWATCH Report for Alligator Harbor-7 in Franklin County
Estuary and Estuary Segment: Apalachicola Bay and Alligator Harbor Alligator Harbor
Using Data Downloaded 1/17/2020

Introduction for Estuaries

This report summarizes data collected on systems that have been part of the LAKEWATCH program. Data are from the period of record for individual systems. The first part of this summary lists background data for each system, the second part lists the long-term data averages and ranges and the final part are trend plots for nutrients, chlorophyll and Secchi depth. Plots were only made for systems with five or more years of data.

The near shore Florida coastline is separated into estuary and estuary segments within the estuary. Deeper coastal waters are separated into coastal nutrient regions and coastal nutrient segments within the regions. Numeric nutrient criteria are established for all estuary segments, including criteria for total nitrogen, total phosphorus, and chlorophyll *a*. For open ocean coastal waters, numeric criteria are established for chlorophyll *a*, that is derived from satellite remote sensing techniques. For those locations without defined segments there are narrative nutrient criteria (e.g., Florida Keys Halo Zone).

The maps defining individual estuaries and coastal segments can be found at the following link:
<https://www.flrules.org/Gateway/reference.asp?No=Ref-05420>

The individual nutrient criteria can be found at the following link:
<https://www.flrules.org/gateway/RuleNo.asp?title=SURFACE%20WATER%20QUALITY%20STANDARDS&ID=62-302.532>

Base File Data for Estuaries: Definitions:

- **County:** Name of county adjacent to the system.
- **Name:** System name that LAKEWATCH uses for the station.
- **GNIS Number:** Number created by USGS's Geographic Names Information System.
- **Water Body Type:** Four different types of systems; lakes, estuaries, river/streams and springs.
- **Period of Record (years):** Number of years a system has been in the LAKEWATCH program.
- **Latitude and Longitude:** Coordinates identifying the exact location of station 1 for each system.

Table 1. Base File Data.

County	Franklin
Name	Alligator Harbor-7
GNIS Number	308389
Water Body Type	Estuary
Period of Record (years, range)	10 (2006 to 2019)
Latitude	29.9257
Longitude	-84.4508

Long-Term Data for Estuaries: Definitions

The following long-term data are the primary trophic state parameters collected by LAKEWATCH volunteers and classification variables color and specific conductance (LAKEWATCH recently began analyzing samples quarterly for color and specific conductance):

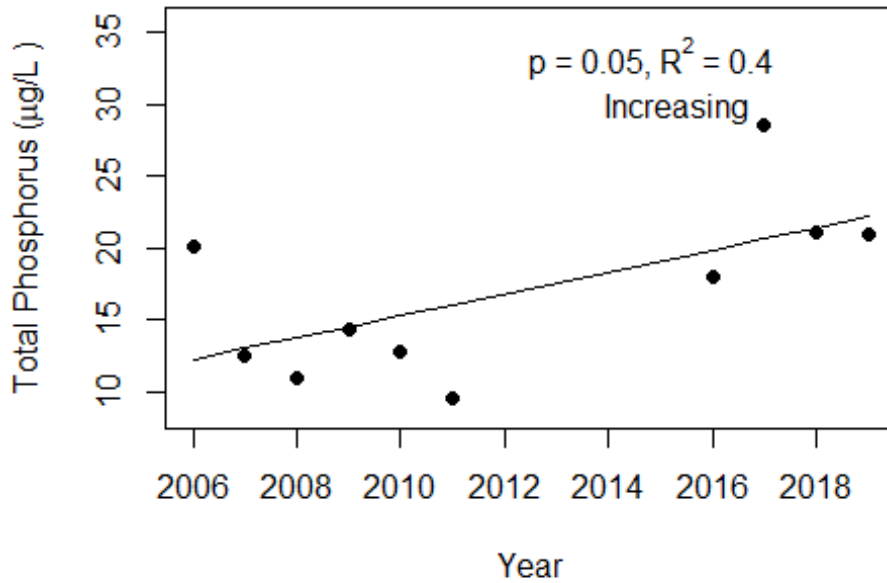
- **Total Phosphorus ($\mu\text{g/L}$):** The nutrient most often limiting growth of plant/algae in Florida's fresh and saltwater environments.
- **Total Nitrogen ($\mu\text{g/L}$):** Another nutrient needed for aquatic plant/algae growth but only limiting when nitrogen to phosphorus ratios are generally less than 10.
- **Chlorophyll-uncorrected ($\mu\text{g/L}$):** Chlorophyll concentrations are used to measure relative abundances of open water algal population.
- **Secchi (ft), Secchi (m):** Secchi measurements are estimates of water clarity (how far one can see into the water) and are listed with English and metric units.
- **Color (Pt-Co Units):** LAKEWATCH measures true color, which is the color of the water after particles have been filtered out.
- **Specific Conductance ($\mu\text{S/cm@25}^\circ\text{C}$), Salinity (ppt):** Measurement of the ability of water to conduct electricity and can be used to estimate the amount of dissolved materials in water.

Table 2. Long-term trophic state data collected monthly by LAKEWATCH volunteers and color and specific conductance/salinity (collected quarterly).

Parameter	Minimum and Maximum Annual Geometric Means	Grand Geometric Mean (Sampling years)
Total Phosphorus ($\mu\text{g/L}$)	8 - 26	15 (10)
Total Nitrogen ($\mu\text{g/L}$)	186 - 321	238 (10)
Chlorophyll- uncorrected ($\mu\text{g/L}$)	0 - 6	3 (10)
Secchi (ft)	3.9 - 9.4	5.9 (10)
Secchi (m)	1.2 - 2.9	1.8 (10)
Color (Pt-Co Units)	3 - 13	6 (10)
Specific Conductance ($\mu\text{S/cm@25 C}$)	30397 - 47000	39022 (10)
Salinity (ppt)	19 - 29	24 (10)

Figure 1 and Figure 2. Trend plots of annual average total phosphorus and annual average total nitrogen versus year. The R^2 value indicates the strength of the relations (ranges from 0.0 to 1.0; higher the R^2 the stronger the relation) and the p value indicates if the relation is significant ($p < 0.05$ is significant). Trend status are reported on plots.

Alligator Harbor-7 (Franklin)



Alligator Harbor-7 (Franklin)

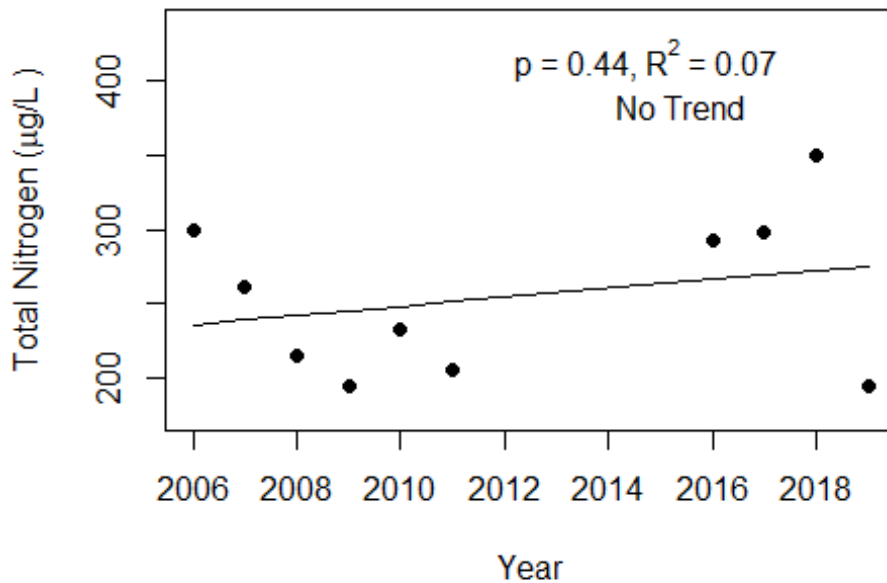
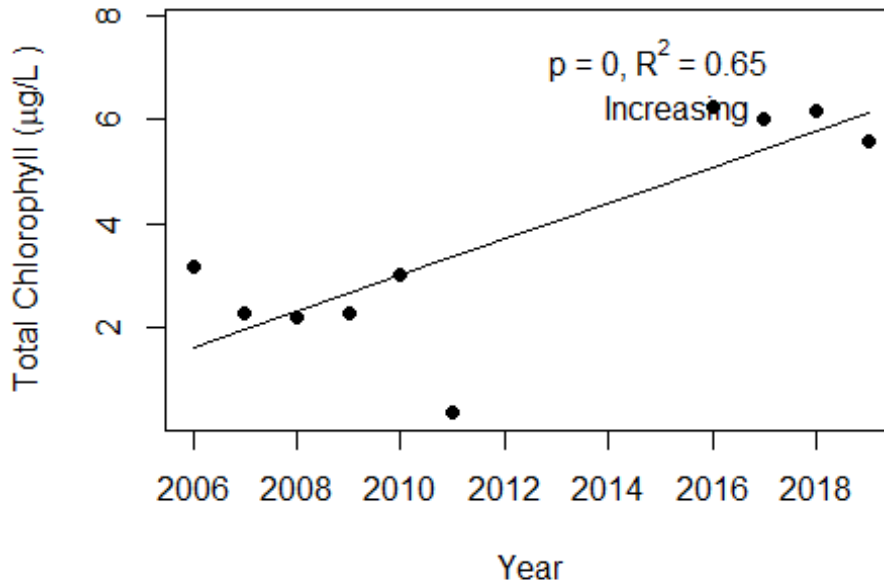


Figure 3 and Figure 4. Trend plots of annual average chlorophyll and annual average Secchi versus year. The R^2 value indicates the strength of the relations (ranges from 0.0 to 1.0; higher the R^2 the stronger the relations and the p value indicates if the relation is significant ($p < 0.05$ is significant). Trend status are reported on plots.

Alligator Harbor-7 (Franklin)



Alligator Harbor-7 (Franklin)

