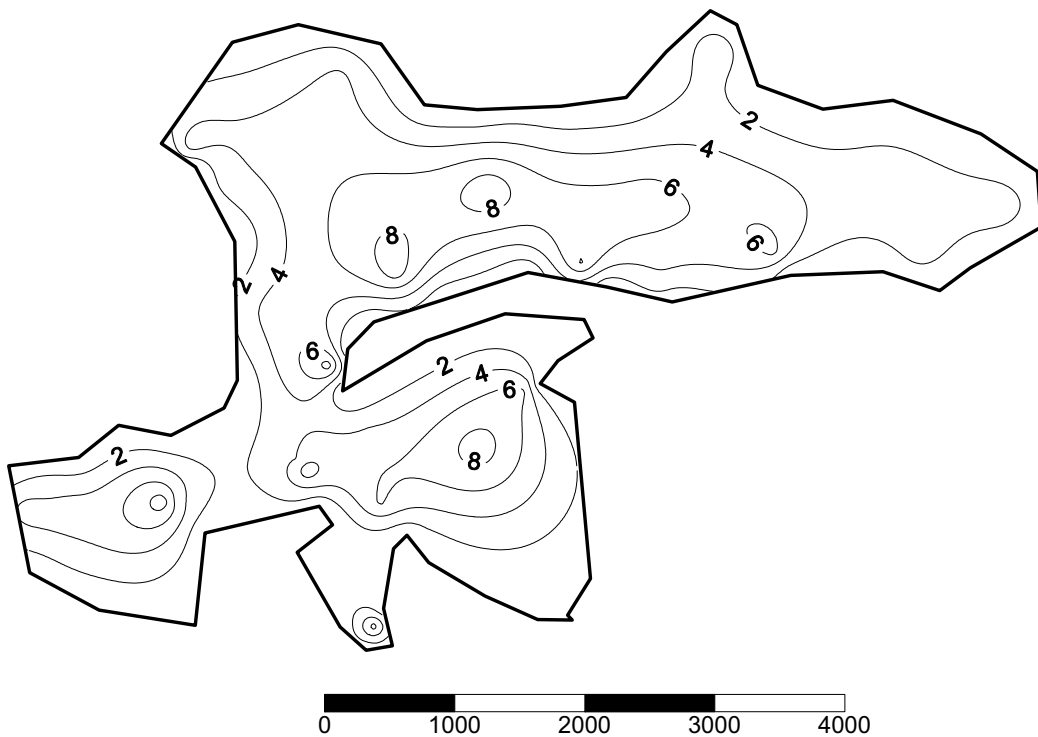


**Tsala Apopka South (Citrus County)
Florida LAKEWATCH Bathymetric Map**



Florida LAKEWATCH personnel created this map using differentially corrected global positioning equipment (GPS). Data were collected June 26, 1996. Scale and map contours are in feet and were generated using kriging technique in Surfer® software package (Golden CO). The center of the lake is located at Latitude 28°46'9" and Longitude 82°17'4". On this date, the lake surface area was calculated at 383 acres (155 hectares). This is only an approximate bathymetric map and should not be used for navigation.¹

¹Map revised with new gridding procedures 2/10/05.