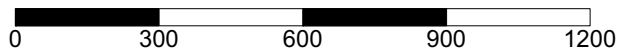
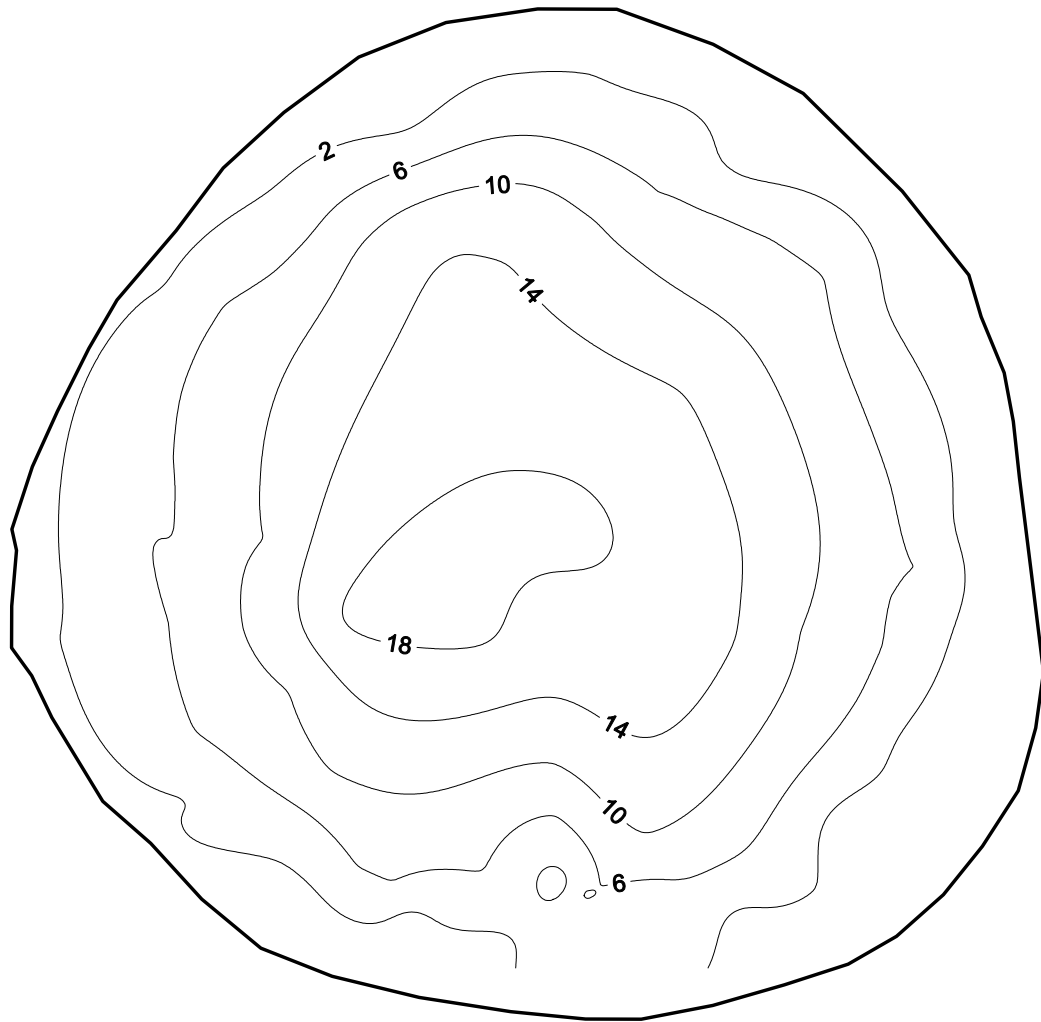


Hill (Highlands County)
Florida LAKEWATCH Bathymetric Map



Florida LAKEWATCH personnel created this map using differentially corrected global positioning equipment (GPS). Data were collected July 10, 1996. Scale and map contours are in feet and were generated using kriging technique in Surfer® software package (Golden CO). The center of the lake is located at Latitude 27°20'59" and Longitude 81°26'18". On this date, the lake surface area was calculated at 71 acres (29 hectares). This is only an approximate bathymetric map and should not be used for navigation.¹

¹Map revised with new gridding procedures 2/10/05.