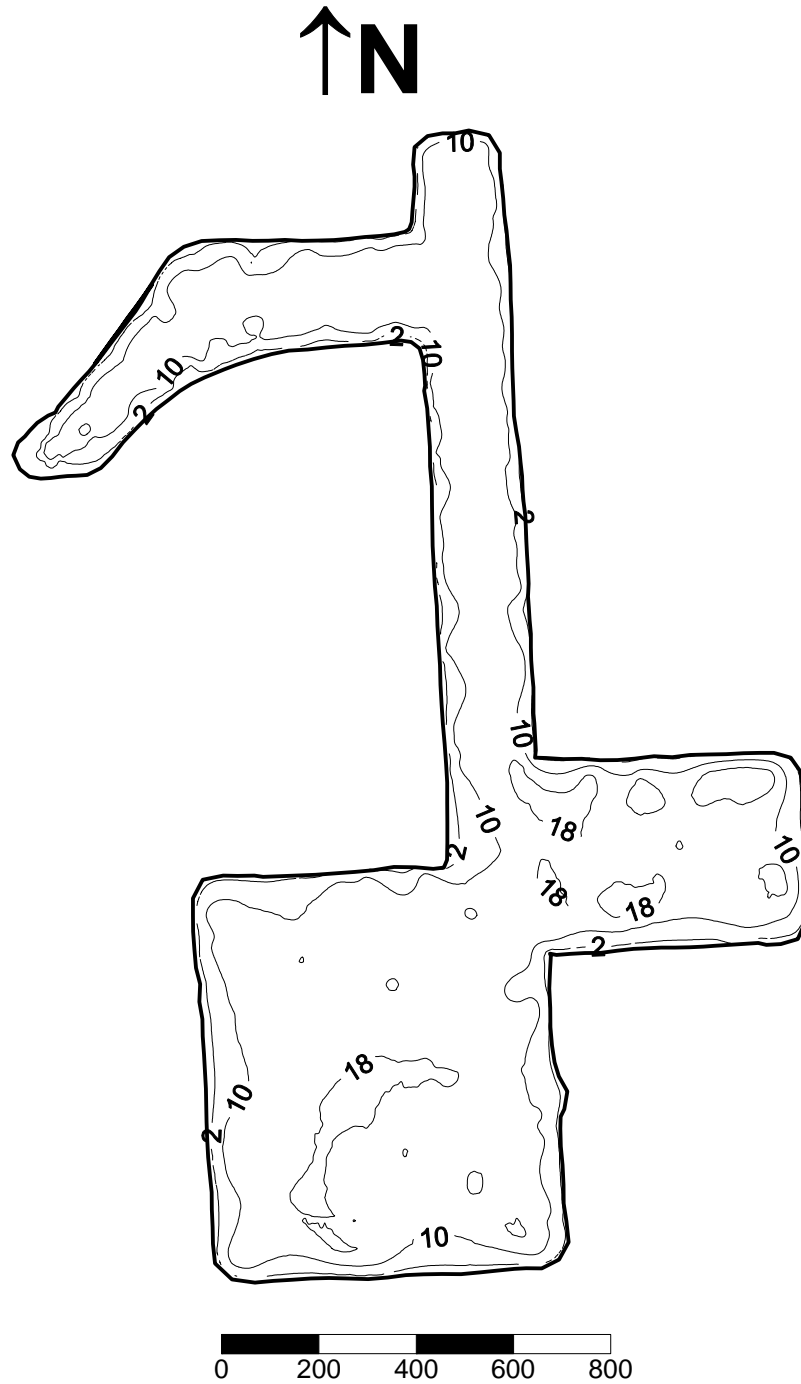


Highland (Miami-Dade County)
Florida LAKEWATCH Bathymetric Map



Florida LAKEWATCH personnel created this map using differentially corrected global positioning equipment (GPS). Data were collected July 29, 2003. Map contours and map scale are in feet and were generated using kriging technique in Surfer® software package (Golden CO). The center of the lake is located at Latitude 25°58'18" and Longitude 80°9'32". On this date, the lake surface area was calculated at 33 acres (13 hectares). This is only an approximate bathymetric map and should not be used for navigation.