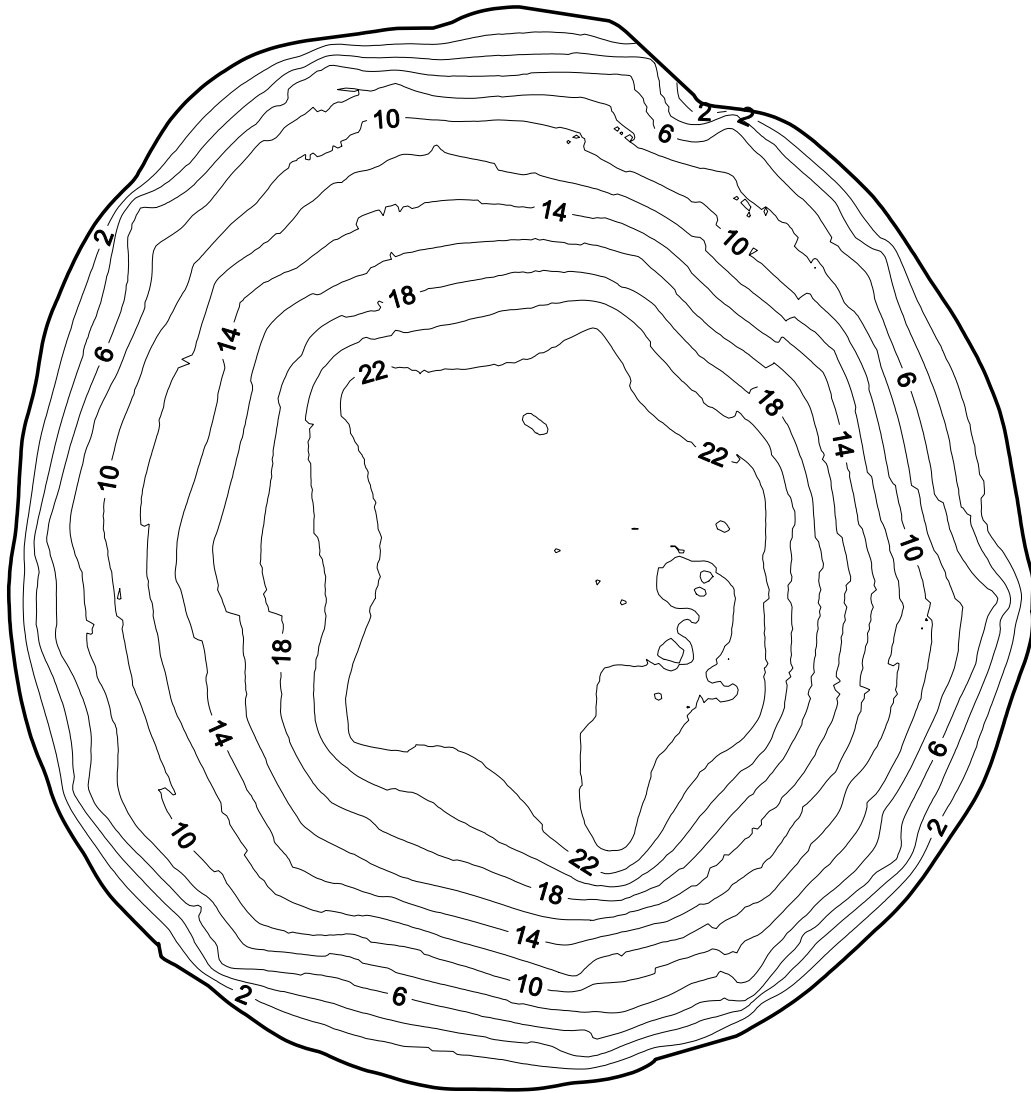


**Hermosa (Lake County)
Florida LAKEWATCH Bathymetric Map**



Florida LAKEWATCH personnel created this map using differentially corrected global positioning equipment (GPS). Data were collected September 2, 2008. Map contours are in 2 foot increments and were generated using kriging technique in Surfer® software package (Golden CO). The center of the lake is located at Latitude N 28° 50' 01.6" and Longitude W 81° 42' 11.7". On this date, the lake surface area was calculated at 28.7 acres (11.6 hectares) and the lake elevation was estimated at 71.8 ft above MSL. This is only an approximate bathymetric map and should not be used for navigation.