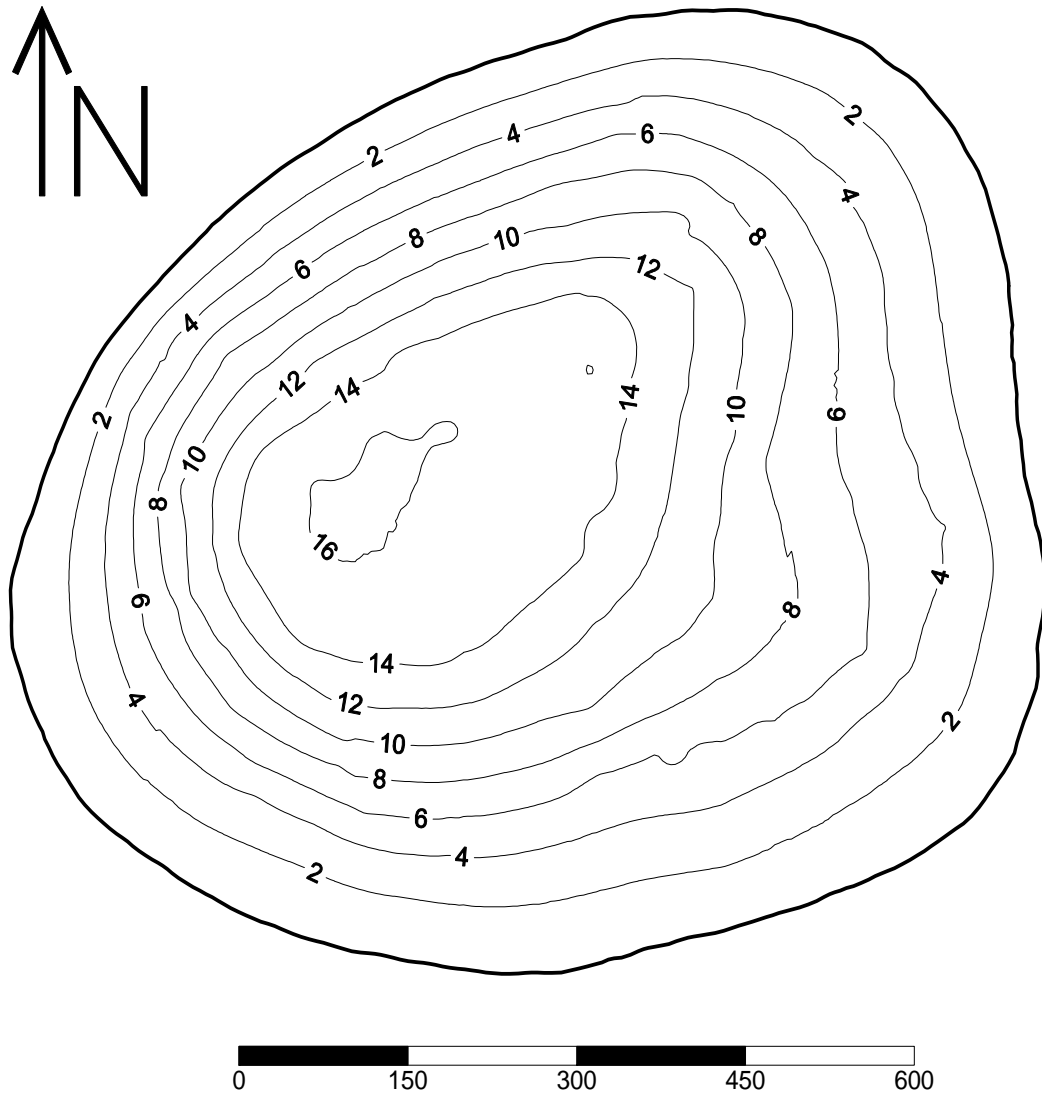


**Crown (Lake County)  
Florida LAKEWATCH Bathymetric Map**



Florida LAKEWATCH personnel created this map using differentially corrected global positioning equipment (GPS). Data were collected August 21, 2007. Map contours are in 2 foot increments and were generated using kriging technique in Surfer® software package (Golden CO). The center of the lake is located at Latitude N 28° 39' 36.3" and Longitude W 81° 51' 37.7". On this date, the lake surface area was calculated at 12.8 acres (5.2 hectares) and the lake level was estimated at 89.34 feet (MSL) using a Trimble Unit Pro XRS GPS. This is only an approximate bathymetric map and should not be used for navigation.