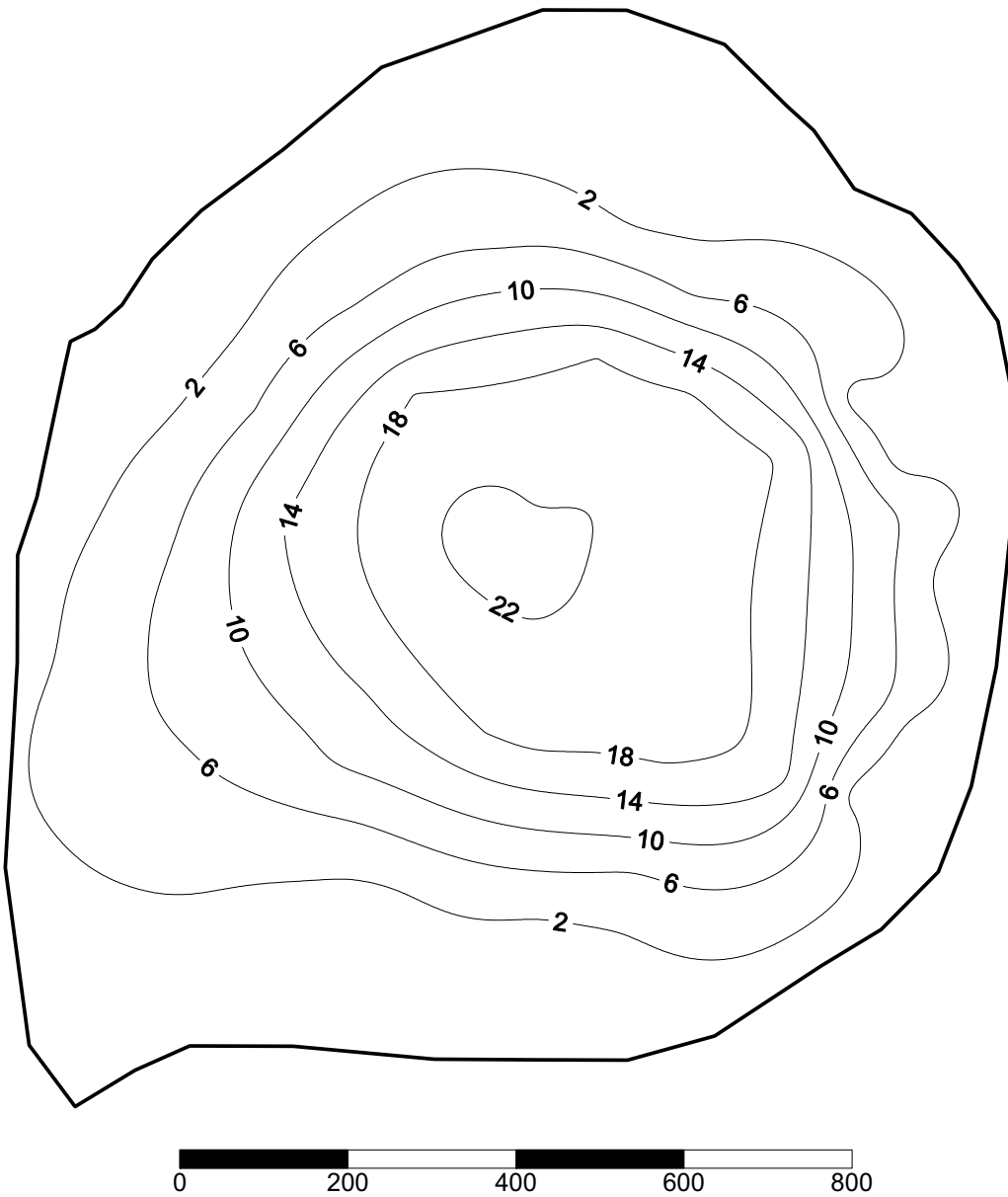


**Chilton (Highlands County)  
Florida LAKEWATCH Bathymetric Map**



Florida LAKEWATCH personnel created this map using differentially corrected global positioning equipment (GPS). Data were collected July 23, 1996. Scale and map contours are in feet and were generated using kriging technique in Surfer® software package (Golden CO). The center of the lake is located at Latitude 27°37'54" and Longitude 81°33'24". On this date, the lake surface area was calculated at 25 acres (10 hectares). This is only an approximate bathymetric map and should not be used for navigation.<sup>1</sup>

<sup>1</sup>Map revised with new gridding procedures 2/10/05.