

LAKEWATCH Report for Burnt Mill Lower in Bay County Using Data Downloaded 10/17/2016

Introduction Streams

For many decades Florida has had a narrative nutrient water quality criterion in place to protect Florida's waters against nutrient over-enrichment. In 2009, the Florida Department of Environmental Protection (FDEP) initiated rulemaking and, by 2011, adopted what would be the first set of statewide numeric nutrient standards for Florida's waters. By 2015, almost all of the remaining waters in Florida have numeric nutrient standards (see for Florida Department of Environmental Regulation Nutrient Criteria's for: Streams, spring vents: <http://www.dep.state.fl.us/water/wqssp/nutrients/index.htm>).

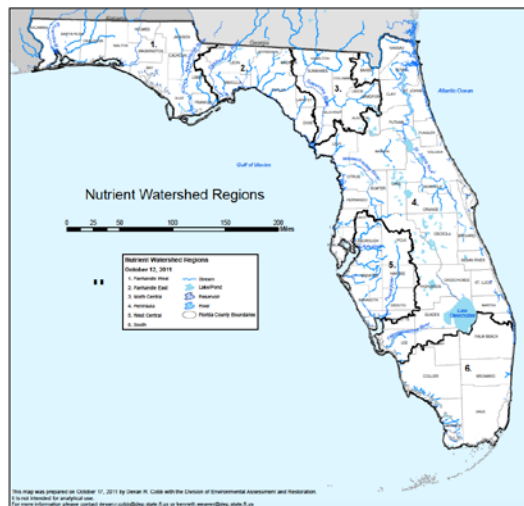


Figure 1. Map showing nutrient thresholds areas for streams set forth by FDEP.

Base File Data: Definitions

The long-term data summary will include the following parameters listed with a definition after each one:

- **County:** Name of county in which the stream resides.
- **Name:** Stream name that LAKEWATCH uses for the system.
- **Latitude and Longitude:** Coordinates identifying the exact location of station 1 for each system.
- **Water Body Type:** Four different types of systems; lakes, estuaries, streams and springs.
- **Period of Record (year):** Years a stream has been in the LAKEWATCH program.

| | |
|---------------------------|------------------|
| County | Bay |
| Name | Burnt Mill Lower |
| Latitude | 30.296 |
| Longitude | -85.7617 |
| Water Body Type | Stream |
| Period of Record (year) | 2003 to 2016 |
| Nutrient Watershed Region | Panhandle West |

LAKEWATCH Report for Burnt Mill Lower in Bay County Using Data Downloaded 10/17/2016

The nutrient thresholds for streams set forth by FDEP are listed in table below along with the map showing zones.

| Nutrient Watershed Region | Total Phosphorus Nutrient Threshold ¹ | Total Nitrogen Nutrient Threshold ¹ |
|---------------------------|---|---|
| Panhandle West | 60 µg/L | 670 µg/L |
| Panhandle East | 180 µg/L | 1030 µg/L |
| North Central | 300 µ/L | 1870 µg/L |
| Peninsular | 120 µg/L | 1540 µg/L |
| West Central | 490 µg/L | 1650 µg/L |
| South Florida | No numeric nutrient threshold. The narrative criterion in paragraph 62-302.530(47)(b), F.A.C., applies. | No numeric nutrient threshold. The narrative criterion in paragraph 62-302.530(47)(b), F.A.C., applies. |

¹These values are annual geometric mean concentrations not to be exceeded more than once in any three calendar year periods.

Long-Term Data Summary Streams: Definitions

The following long-term data are the primary trophic state parameters collected by LAKEWATCH volunteers and classification variables color and specific conductance (LAKEWATCH recently began analyzing samples quarterly for color and specific conductance):

- **Total Phosphorus (µg/L):** The nutrient most often limiting growth of plant/algae in Florida's fresh and saltwater environments.
- **Total Nitrogen (µg/L):** Another nutrient needed for aquatic plant/algae growth but only limiting when nitrogen to phosphorus ratios are generally less than 10.
- **Chlorophyll-uncorrected (µg/L):** Chlorophyll concentrations are used to measure relative abundances of open water algal population.
- **Secchi (ft), Secchi (m):** Secchi measurements are estimates of water clarity (how far one can see into the water) and are listed with English and metric units.
- **Color (Pt-Co Units):** LAKEWATCH measures true color, which is the color of the water after particles have been filter out.
- **Specific Conductance (µS/cm@25°C):** Measurement of the ability of water to conduct electricity and can be used to estimate the amount of dissolve materials in water.

Long-Term Data Summary Streams: Data

| Parameter | Minimum and Maximum Annual Means | Mean of Annual Means (Sampling years) |
|-----------------------------------|----------------------------------|---------------------------------------|
| Total Phosphorus (µg/L) | 12 - 19 | 16 (14) |
| Total Nitrogen (µg/L) | 248 - 380 | 313 (14) |
| Chlorophyll- uncorrected (µg/L) | 3.1 - 6.2 | 4.2 (14) |
| Secchi (ft) | 3.4 - 5.3 | 4.6 (14) |
| Secchi (m) | 1.0 - 1.6 | 1.4 (14) |
| Color (Pt-Co Units) | 10 - 121 | 38 (14) |
| Specific Conductance (µS/cm@25 C) | 13000 - 41667 | 31208 (14) |

LAKEWATCH Report for Burnt Mill Lower in Bay County Using Data Downloaded 10/17/2016

Trend Analyses Streams

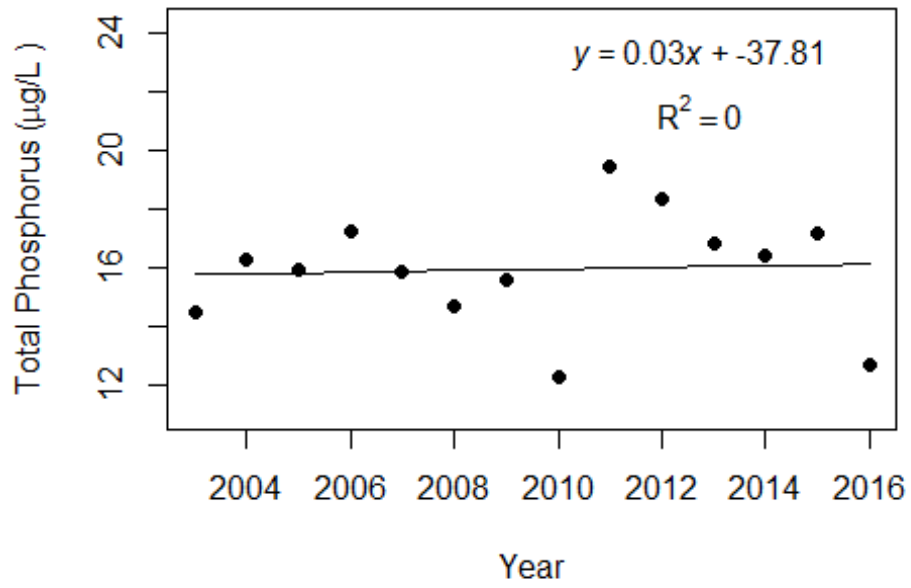
The following data are for linear regression statistics derived by plotting annual average total phosphorus, total nitrogen, chlorophyll, and Secchi data by year of data collection. Linear regression analysis is a common statistical approach used to determine if significant trends are occurring over time. These analyses define statistics based on the best fit line drawn through the data after plotting them with year on the horizontal line (x-axis) and the data value on the vertical line (y-axis). Figure 2 shows example plots with linear regression statistic of lakes that show significant total phosphorus increases, decreases and no change over time. The statistics that are listed include the following:

- **Number of years (n):** This is simply the number of years of data that were used to calculate annual means.
- **Intercept (a):** This is the value on the y-axis that the fitted line would have cross if the x-axis where zero.
- **Slope (b):** This is the rate at which the fitted line increases (positive number) or decreases (negative number).
- **Coefficient of determination (R²):** This value is an indication of how much variance above and below the fitted line there is in the data. This value ranges from 0 to 1. A high value means a tight fit and a low value means a loose fit.
- **Probability of Significance (p):** For most statistical analyses a p-value of less than 0.05 means the statistic is significant and analyses with p-values greater than 0.05 are not significant.

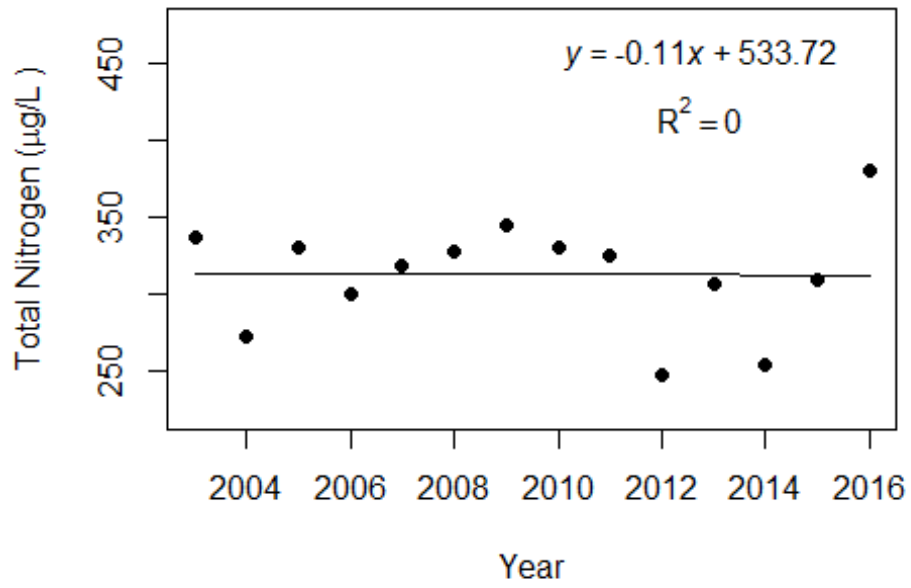
| Statistic | Total Phosphorus | Total Nitrogen | Chlorophyll | Secchi |
|--|------------------|----------------|-------------|----------|
| Number of Years (n) | 14 | 14 | 14 | 14 |
| Intercept (a) | -38 | 534 | 22 | -109 |
| Slope (b) | 0.03 | -0.11 | -0.01 | 0.06 |
| Coefficient of Determination (R ²) | 0.00 | 0.00 | 0.00 | 0.20 |
| Probability of Significance (p) | 0.85 | 0.97 | 0.87 | 0.11 |
| Potential Trend | No Trend | No Trend | No Trend | No Trend |

The following graphs on the next two pages are trend analyses examining regression between year and annual means of total phosphorus, total nitrogen, chlorophyll, and Secchi depth for Burnt Mill Lower in Bay County. If there are no plots then there is less than five years of data, which is not enough for the analysis.

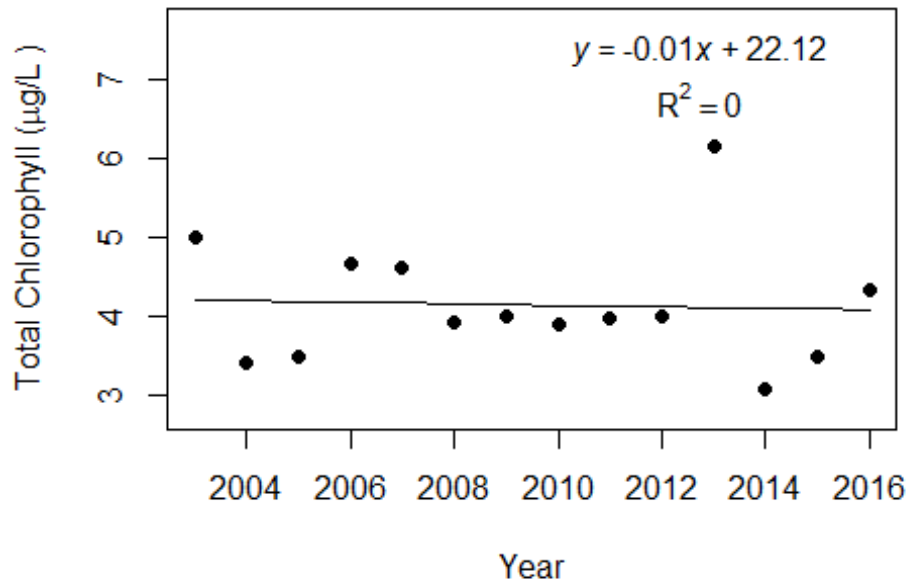
Burnt Mill Lower (Bay)



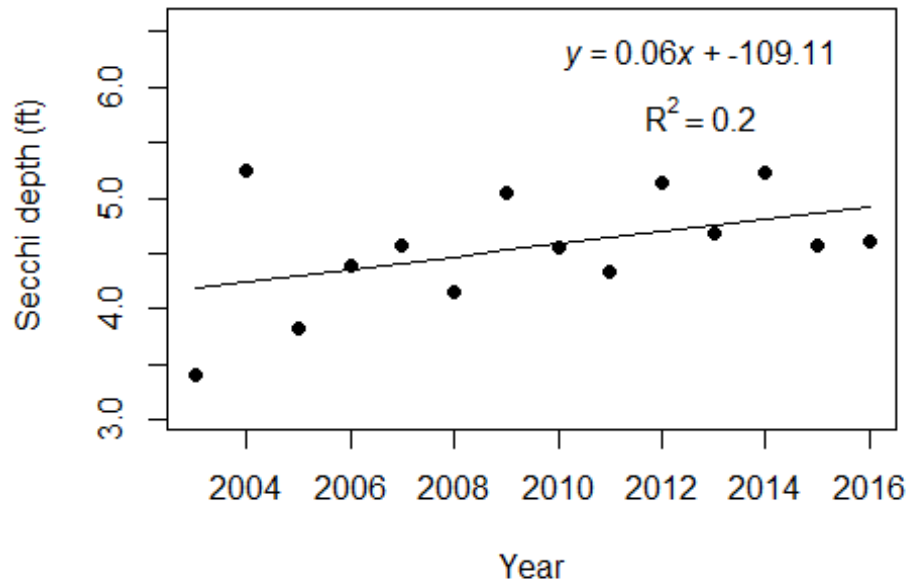
Burnt Mill Lower (Bay)



Burnt Mill Lower (Bay)



Burnt Mill Lower (Bay)



LAKEWATCH Report for Burnt Mill Upper in Bay County Using Data Downloaded 10/17/2016

Introduction Streams

For many decades Florida has had a narrative nutrient water quality criterion in place to protect Florida's waters against nutrient over-enrichment. In 2009, the Florida Department of Environmental Protection (FDEP) initiated rulemaking and, by 2011, adopted what would be the first set of statewide numeric nutrient standards for Florida's waters. By 2015, almost all of the remaining waters in Florida have numeric nutrient standards (see for Florida Department of Environmental Regulation Nutrient Criteria's for: Streams, spring vents: <http://www.dep.state.fl.us/water/wqssp/nutrients/index.htm>).

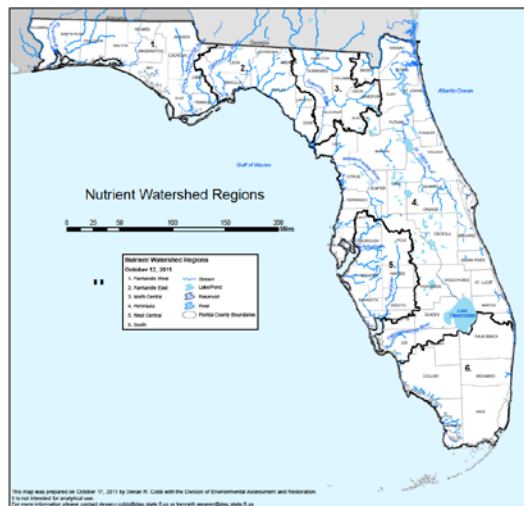


Figure 1. Map showing nutrient thresholds areas for streams set forth by FDEP.

Base File Data: Definitions

The long-term data summary will include the following parameters listed with a definition after each one:

- **County:** Name of county in which the stream resides.
- **Name:** Stream name that LAKEWATCH uses for the system.
- **Latitude and Longitude:** Coordinates identifying the exact location of station 1 for each system.
- **Water Body Type:** Four different types of systems; lakes, estuaries, streams and springs.
- **Period of Record (year):** Years a stream has been in the LAKEWATCH program.

| | |
|---------------------------|------------------|
| County | Bay |
| Name | Burnt Mill Upper |
| Latitude | 30.3286 |
| Longitude | -85.7635 |
| Water Body Type | Stream |
| Period of Record (year) | 2003 to 2016 |
| Nutrient Watershed Region | Panhandle West |

LAKEWATCH Report for Burnt Mill Upper in Bay County Using Data Downloaded 10/17/2016

The nutrient thresholds for streams set forth by FDEP are listed in table below along with the map showing zones.

| Nutrient Watershed Region | Total Phosphorus Nutrient Threshold ¹ | Total Nitrogen Nutrient Threshold ¹ |
|---------------------------|---|---|
| Panhandle West | 60 µg/L | 670 µg/L |
| Panhandle East | 180 µg/L | 1030 µg/L |
| North Central | 300 µ/L | 1870 µg/L |
| Peninsular | 120 µg/L | 1540 µg/L |
| West Central | 490 µg/L | 1650 µg/L |
| South Florida | No numeric nutrient threshold. The narrative criterion in paragraph 62-302.530(47)(b), F.A.C., applies. | No numeric nutrient threshold. The narrative criterion in paragraph 62-302.530(47)(b), F.A.C., applies. |

¹These values are annual geometric mean concentrations not to be exceeded more than once in any three calendar year periods.

Long-Term Data Summary Streams: Definitions

The following long-term data are the primary trophic state parameters collected by LAKEWATCH volunteers and classification variables color and specific conductance (LAKEWATCH recently began analyzing samples quarterly for color and specific conductance):

- **Total Phosphorus (µg/L):** The nutrient most often limiting growth of plant/algae in Florida's fresh and saltwater environments.
- **Total Nitrogen (µg/L):** Another nutrient needed for aquatic plant/algae growth but only limiting when nitrogen to phosphorus ratios are generally less than 10.
- **Chlorophyll-uncorrected (µg/L):** Chlorophyll concentrations are used to measure relative abundances of open water algal population.
- **Secchi (ft), Secchi (m):** Secchi measurements are estimates of water clarity (how far one can see into the water) and are listed with English and metric units.
- **Color (Pt-Co Units):** LAKEWATCH measures true color, which is the color of the water after particles have been filter out.
- **Specific Conductance (µS/cm@25°C):** Measurement of the ability of water to conduct electricity and can be used to estimate the amount of dissolve materials in water.

Long-Term Data Summary Streams: Data

| Parameter | Minimum and Maximum Annual Means | Mean of Annual Means (Sampling years) |
|-----------------------------------|----------------------------------|---------------------------------------|
| Total Phosphorus (µg/L) | 10 - 17 | 12 (14) |
| Total Nitrogen (µg/L) | 255 - 406 | 330 (14) |
| Chlorophyll- uncorrected (µg/L) | 1.5 - 5.1 | 3.0 (14) |
| Secchi (ft) | 2.8 - 5.2 | 3.9 (14) |
| Secchi (m) | 0.9 - 1.6 | 1.2 (14) |
| Color (Pt-Co Units) | 15 - 137 | 67 (14) |
| Specific Conductance (µS/cm@25 C) | 6450 - 32333 | 14765 (14) |

LAKEWATCH Report for Burnt Mill Upper in Bay County Using Data Downloaded 10/17/2016

Trend Analyses Streams

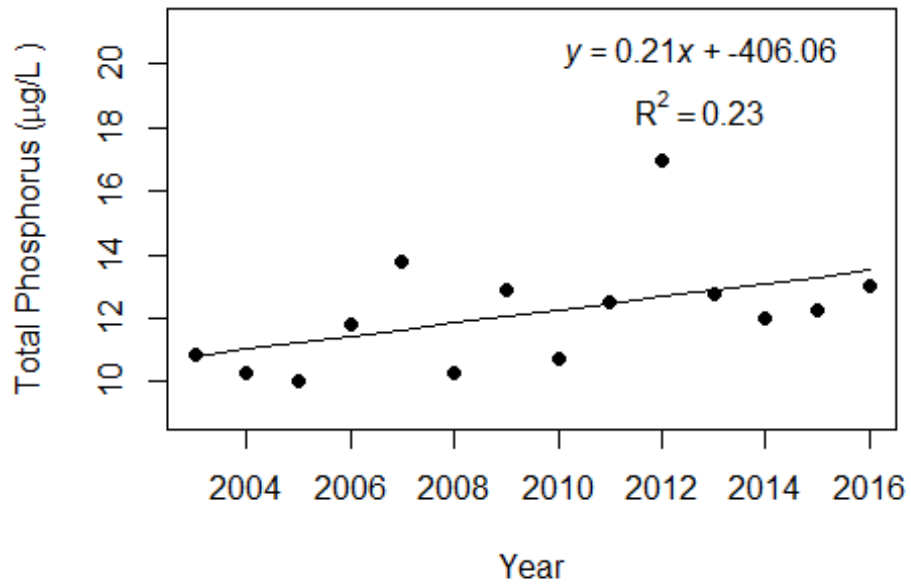
The following data are for linear regression statistics derived by plotting annual average total phosphorus, total nitrogen, chlorophyll, and Secchi data by year of data collection. Linear regression analysis is a common statistical approach used to determine if significant trends are occurring over time. These analyses define statistics based on the best fit line drawn through the data after plotting them with year on the horizontal line (x-axis) and the data value on the vertical line (y-axis). Figure 2 shows example plots with linear regression statistic of lakes that show significant total phosphorus increases, decreases and no change over time. The statistics that are listed include the following:

- **Number of years (n):** This is simply the number of years of data that were used to calculate annual means.
- **Intercept (a):** This is the value on the y-axis that the fitted line would have cross if the x-axis where zero.
- **Slope (b):** This is the rate at which the fitted line increases (positive number) or decreases (negative number).
- **Coefficient of determination (R²):** This value is an indication of how much variance above and below the fitted line there is in the data. This value ranges from 0 to 1. A high value means a tight fit and a low value means a loose fit.
- **Probability of Significance (p):** For most statistical analyses a p-value of less than 0.05 means the statistic is significant and analyses with p-values greater than 0.05 are not significant.

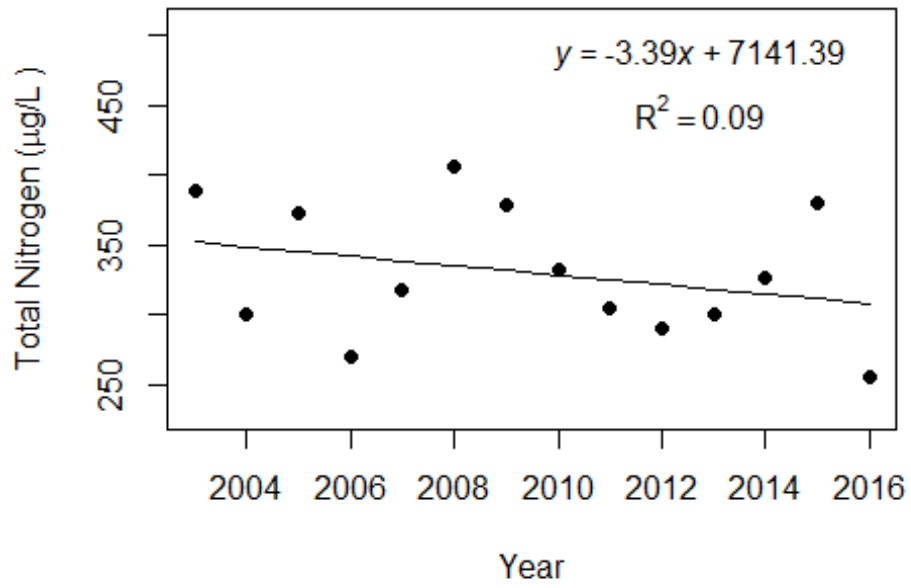
| Statistic | Total Phosphorus | Total Nitrogen | Chlorophyll | Secchi |
|--|------------------|----------------|-------------|----------|
| Number of Years (n) | 14 | 14 | 14 | 14 |
| Intercept (a) | -406 | 7141 | -256 | 7 |
| Slope (b) | 0.21 | -3.39 | 0.13 | -0.00 |
| Coefficient of Determination (R ²) | 0.23 | 0.09 | 0.27 | 0.00 |
| Probability of Significance (p) | 0.08 | 0.30 | 0.06 | 0.97 |
| Potential Trend | No Trend | No Trend | No Trend | No Trend |

The following graphs on the next two pages are trend analyses examining regression between year and annual means of total phosphorus, total nitrogen, chlorophyll, and Secchi depth for Burnt Mill Upper in Bay County. If there are no plots then there is less than five years of data, which is not enough for the analysis.

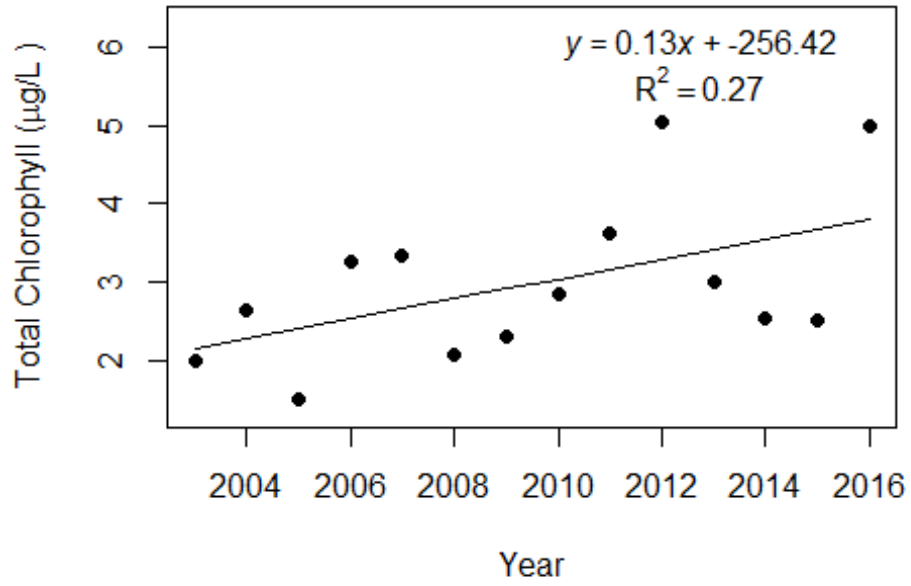
Burnt Mill Upper (Bay)



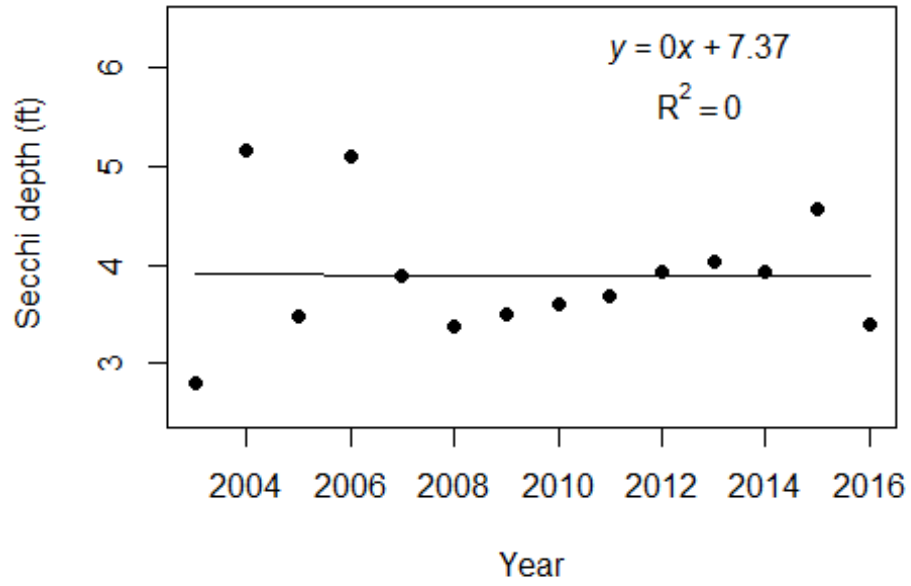
Burnt Mill Upper (Bay)



Burnt Mill Upper (Bay)



Burnt Mill Upper (Bay)



LAKEWATCH Report for Crooked Lower in Bay County Using Data Downloaded 10/17/2016

Introduction Streams

For many decades Florida has had a narrative nutrient water quality criterion in place to protect Florida's waters against nutrient over-enrichment. In 2009, the Florida Department of Environmental Protection (FDEP) initiated rulemaking and, by 2011, adopted what would be the first set of statewide numeric nutrient standards for Florida's waters. By 2015, almost all of the remaining waters in Florida have numeric nutrient standards (see for Florida Department of Environmental Regulation Nutrient Criteria's for: Streams, spring vents: <http://www.dep.state.fl.us/water/wqssp/nutrients/index.htm>).

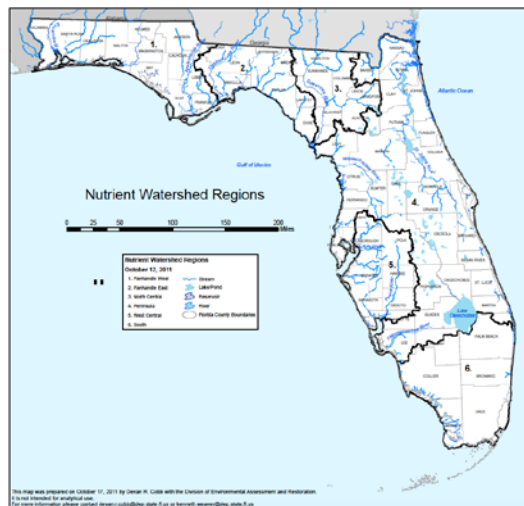


Figure 1. Map showing nutrient thresholds areas for streams set forth by FDEP.

Base File Data: Definitions

The long-term data summary will include the following parameters listed with a definition after each one:

- **County:** Name of county in which the stream resides.
- **Name:** Stream name that LAKEWATCH uses for the system.
- **Latitude and Longitude:** Coordinates identifying the exact location of station 1 for each system.
- **Water Body Type:** Four different types of systems; lakes, estuaries, streams and springs.
- **Period of Record (year):** Years a stream has been in the LAKEWATCH program.

| | |
|---------------------------|----------------|
| County | Bay |
| Name | Crooked Lower |
| Latitude | 30.2918 |
| Longitude | -85.808 |
| Water Body Type | Stream |
| Period of Record (year) | 2003 to 2016 |
| Nutrient Watershed Region | Panhandle West |

LAKEWATCH Report for Crooked Lower in Bay County Using Data Downloaded 10/17/2016

The nutrient thresholds for streams set forth by FDEP are listed in table below along with the map showing zones.

| Nutrient Watershed Region | Total Phosphorus Nutrient Threshold ¹ | Total Nitrogen Nutrient Threshold ¹ |
|---------------------------|---|---|
| Panhandle West | 60 µg/L | 670 µg/L |
| Panhandle East | 180 µg/L | 1030 µg/L |
| North Central | 300 µ/L | 1870 µg/L |
| Peninsular | 120 µg/L | 1540 µg/L |
| West Central | 490 µg/L | 1650 µg/L |
| South Florida | No numeric nutrient threshold. The narrative criterion in paragraph 62-302.530(47)(b), F.A.C., applies. | No numeric nutrient threshold. The narrative criterion in paragraph 62-302.530(47)(b), F.A.C., applies. |

¹These values are annual geometric mean concentrations not to be exceeded more than once in any three calendar year periods.

Long-Term Data Summary Streams: Definitions

The following long-term data are the primary trophic state parameters collected by LAKEWATCH volunteers and classification variables color and specific conductance (LAKEWATCH recently began analyzing samples quarterly for color and specific conductance):

- **Total Phosphorus (µg/L):** The nutrient most often limiting growth of plant/algae in Florida's fresh and saltwater environments.
- **Total Nitrogen (µg/L):** Another nutrient needed for aquatic plant/algae growth but only limiting when nitrogen to phosphorus ratios are generally less than 10.
- **Chlorophyll-uncorrected (µg/L):** Chlorophyll concentrations are used to measure relative abundances of open water algal population.
- **Secchi (ft), Secchi (m):** Secchi measurements are estimates of water clarity (how far one can see into the water) and are listed with English and metric units.
- **Color (Pt-Co Units):** LAKEWATCH measures true color, which is the color of the water after particles have been filter out.
- **Specific Conductance (µS/cm@25°C):** Measurement of the ability of water to conduct electricity and can be used to estimate the amount of dissolve materials in water.

Long-Term Data Summary Streams: Data

| Parameter | Minimum and Maximum Annual Means | Mean of Annual Means (Sampling years) |
|-----------------------------------|----------------------------------|---------------------------------------|
| Total Phosphorus (µg/L) | 12 - 20 | 16 (14) |
| Total Nitrogen (µg/L) | 220 - 358 | 293 (14) |
| Chlorophyll- uncorrected (µg/L) | 2.6 - 5.8 | 4.2 (14) |
| Secchi (ft) | 2.3 - 3.5 | 2.9 (14) |
| Secchi (m) | 0.7 - 1.1 | 0.9 (14) |
| Color (Pt-Co Units) | 9 - 73 | 29 (14) |
| Specific Conductance (µS/cm@25 C) | 14000 - 43000 | 30926 (14) |

LAKEWATCH Report for Crooked Lower in Bay County Using Data Downloaded 10/17/2016

Trend Analyses Streams

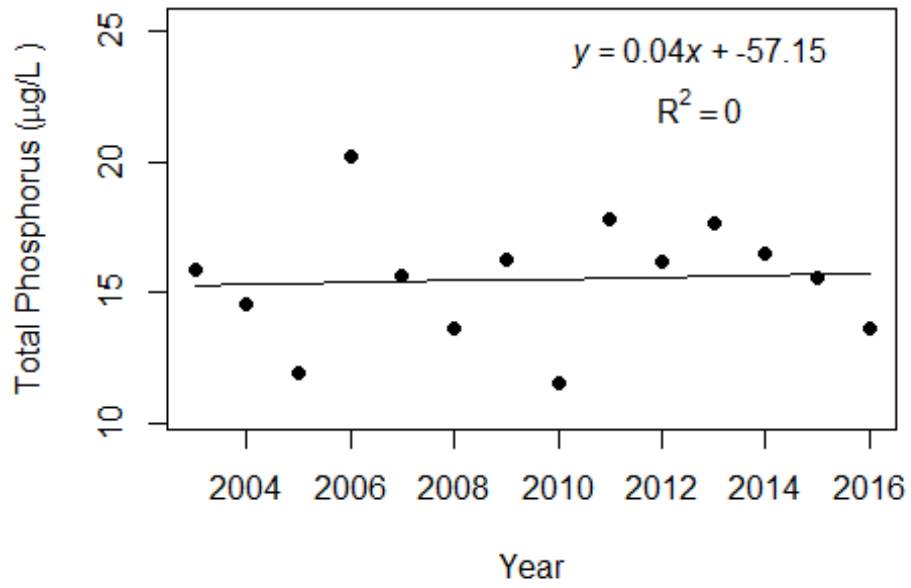
The following data are for linear regression statistics derived by plotting annual average total phosphorus, total nitrogen, chlorophyll, and Secchi data by year of data collection. Linear regression analysis is a common statistical approach used to determine if significant trends are occurring over time. These analyses define statistics based on the best fit line drawn through the data after plotting them with year on the horizontal line (x-axis) and the data value on the vertical line (y-axis). Figure 2 shows example plots with linear regression statistic of lakes that show significant total phosphorus increases, decreases and no change over time. The statistics that are listed include the following:

- **Number of years (n):** This is simply the number of years of data that were used to calculate annual means.
- **Intercept (a):** This is the value on the y-axis that the fitted line would have cross if the x-axis where zero.
- **Slope (b):** This is the rate at which the fitted line increases (positive number) or decreases (negative number).
- **Coefficient of determination (R²):** This value is an indication of how much variance above and below the fitted line there is in the data. This value ranges from 0 to 1. A high value means a tight fit and a low value means a loose fit.
- **Probability of Significance (p):** For most statistical analyses a p-value of less than 0.05 means the statistic is significant and analyses with p-values greater than 0.05 are not significant.

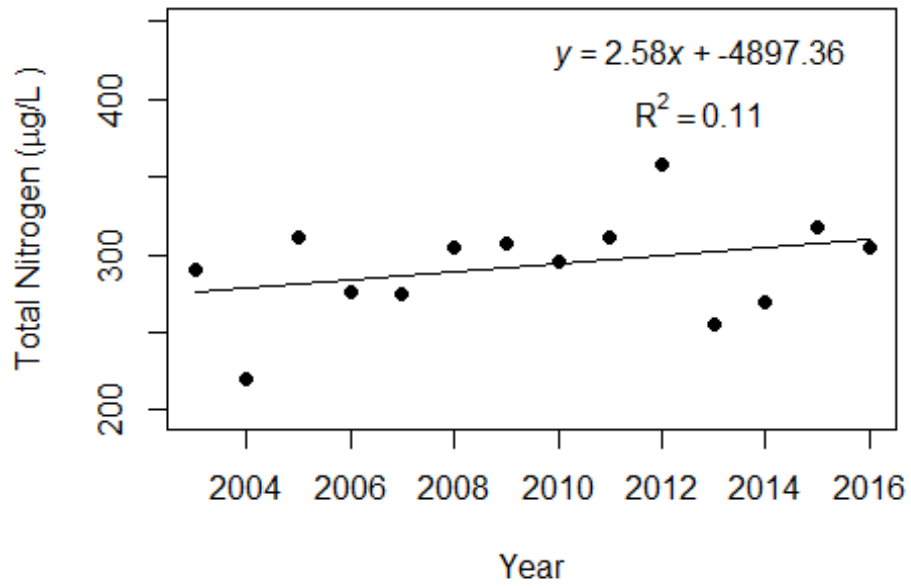
| Statistic | Total Phosphorus | Total Nitrogen | Chlorophyll | Secchi |
|--|------------------|----------------|-------------|----------|
| Number of Years (n) | 14 | 14 | 14 | 14 |
| Intercept (a) | -57 | -4897 | -36 | -47 |
| Slope (b) | 0.04 | 2.58 | 0.02 | 0.02 |
| Coefficient of Determination (R ²) | 0.00 | 0.11 | 0.01 | 0.11 |
| Probability of Significance (p) | 0.83 | 0.25 | 0.74 | 0.26 |
| Potential Trend | No Trend | No Trend | No Trend | No Trend |

The following graphs on the next two pages are trend analyses examining regression between year and annual means of total phosphorus, total nitrogen, chlorophyll, and Secchi depth for Crooked Lower in Bay County. If there are no plots then there is less than five years of data, which is not enough for the analysis.

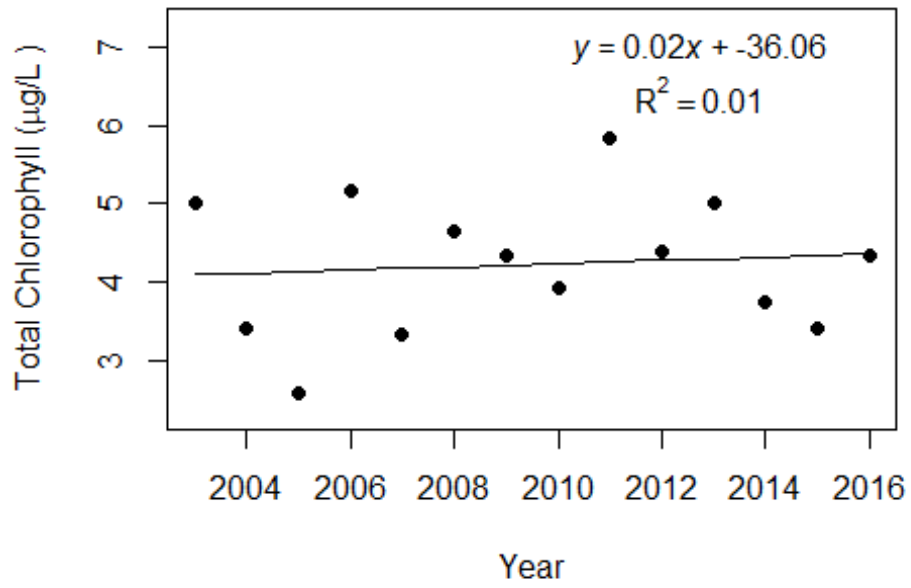
Crooked Lower (Bay)



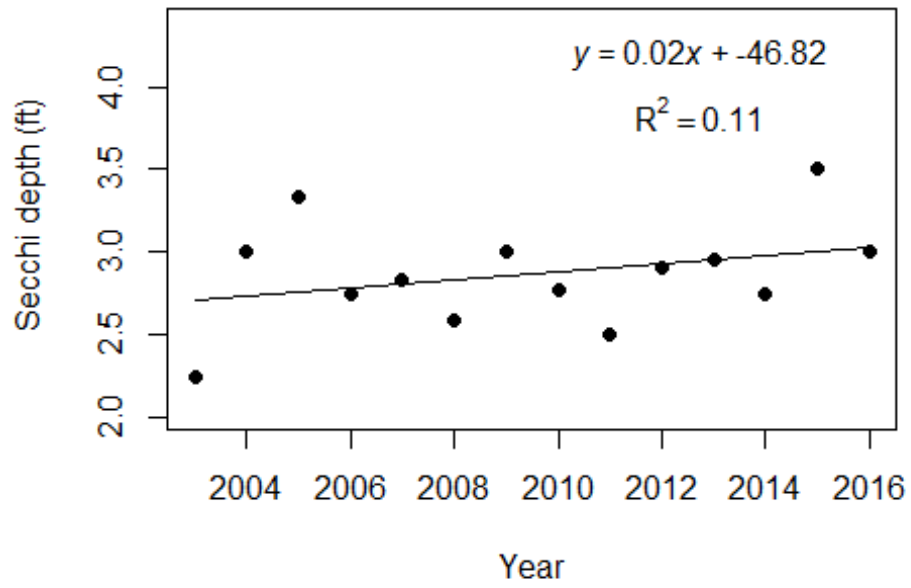
Crooked Lower (Bay)



Crooked Lower (Bay)



Crooked Lower (Bay)



LAKEWATCH Report for Crooked Upper in Bay County Using Data Downloaded 10/17/2016

Introduction Streams

For many decades Florida has had a narrative nutrient water quality criterion in place to protect Florida's waters against nutrient over-enrichment. In 2009, the Florida Department of Environmental Protection (FDEP) initiated rulemaking and, by 2011, adopted what would be the first set of statewide numeric nutrient standards for Florida's waters. By 2015, almost all of the remaining waters in Florida have numeric nutrient standards (see for Florida Department of Environmental Regulation Nutrient Criteria's for: Streams, spring vents: <http://www.dep.state.fl.us/water/wqssp/nutrients/index.htm>).

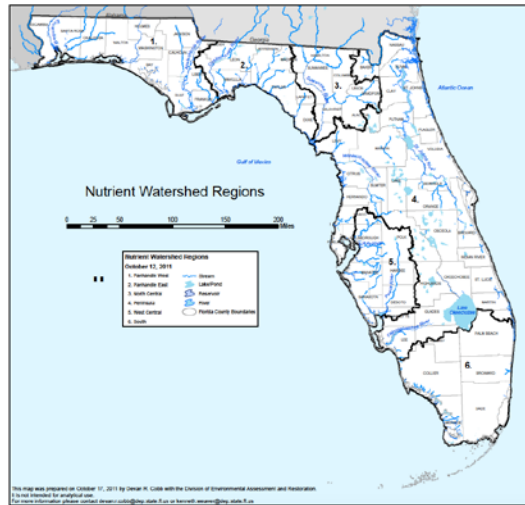


Figure 1. Map showing nutrient thresholds areas for streams set forth by FDEP.

Base File Data: Definitions

The long-term data summary will include the following parameters listed with a definition after each one:

- **County:** Name of county in which the stream resides.
- **Name:** Stream name that LAKEWATCH uses for the system.
- **Latitude and Longitude:** Coordinates identifying the exact location of station 1 for each system.
- **Water Body Type:** Four different types of systems; lakes, estuaries, streams and springs.
- **Period of Record (year):** Years a stream has been in the LAKEWATCH program.

| | |
|---------------------------|----------------|
| County | Bay |
| Name | Crooked Upper |
| Latitude | 30.3082 |
| Longitude | -85.8118 |
| Water Body Type | Stream |
| Period of Record (year) | 2003 to 2016 |
| Nutrient Watershed Region | Panhandle West |

LAKEWATCH Report for Crooked Upper in Bay County Using Data Downloaded 10/17/2016

The nutrient thresholds for streams set forth by FDEP are listed in table below along with the map showing zones.

| Nutrient Watershed Region | Total Phosphorus Nutrient Threshold ¹ | Total Nitrogen Nutrient Threshold ¹ |
|---------------------------|---|---|
| Panhandle West | 60 µg/L | 670 µg/L |
| Panhandle East | 180 µg/L | 1030 µg/L |
| North Central | 300 µ/L | 1870 µg/L |
| Peninsular | 120 µg/L | 1540 µg/L |
| West Central | 490 µg/L | 1650 µg/L |
| South Florida | No numeric nutrient threshold. The narrative criterion in paragraph 62-302.530(47)(b), F.A.C., applies. | No numeric nutrient threshold. The narrative criterion in paragraph 62-302.530(47)(b), F.A.C., applies. |

¹These values are annual geometric mean concentrations not to be exceeded more than once in any three calendar year periods.

Long-Term Data Summary Streams: Definitions

The following long-term data are the primary trophic state parameters collected by LAKEWATCH volunteers and classification variables color and specific conductance (LAKEWATCH recently began analyzing samples quarterly for color and specific conductance):

- **Total Phosphorus (µg/L):** The nutrient most often limiting growth of plant/algae in Florida's fresh and saltwater environments.
- **Total Nitrogen (µg/L):** Another nutrient needed for aquatic plant/algae growth but only limiting when nitrogen to phosphorus ratios are generally less than 10.
- **Chlorophyll-uncorrected (µg/L):** Chlorophyll concentrations are used to measure relative abundances of open water algal population.
- **Secchi (ft), Secchi (m):** Secchi measurements are estimates of water clarity (how far one can see into the water) and are listed with English and metric units.
- **Color (Pt-Co Units):** LAKEWATCH measures true color, which is the color of the water after particles have been filter out.
- **Specific Conductance (µS/cm@25°C):** Measurement of the ability of water to conduct electricity and can be used to estimate the amount of dissolve materials in water.

Long-Term Data Summary Streams: Data

| Parameter | Minimum and Maximum Annual Means | Mean of Annual Means (Sampling years) |
|-----------------------------------|----------------------------------|---------------------------------------|
| Total Phosphorus (µg/L) | 6 - 12 | 8 (14) |
| Total Nitrogen (µg/L) | 173 - 332 | 255 (14) |
| Chlorophyll- uncorrected (µg/L) | 0.8 - 3.5 | 1.5 (14) |
| Secchi (ft) | 3.3 - 6.6 | 5.1 (14) |
| Secchi (m) | 1.0 - 2.0 | 1.6 (14) |
| Color (Pt-Co Units) | 14 - 93 | 45 (14) |
| Specific Conductance (µS/cm@25 C) | 1000 - 24192 | 7910 (14) |

LAKEWATCH Report for Crooked Upper in Bay County Using Data Downloaded 10/17/2016

Trend Analyses Streams

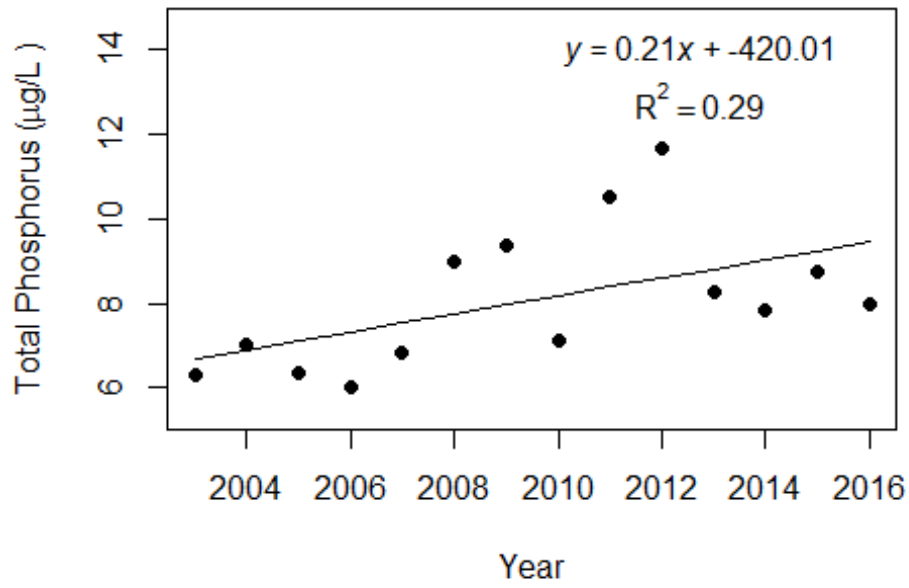
The following data are for linear regression statistics derived by plotting annual average total phosphorus, total nitrogen, chlorophyll, and Secchi data by year of data collection. Linear regression analysis is a common statistical approach used to determine if significant trends are occurring over time. These analyses define statistics based on the best fit line drawn through the data after plotting them with year on the horizontal line (x-axis) and the data value on the vertical line (y-axis). Figure 2 shows example plots with linear regression statistic of lakes that show significant total phosphorus increases, decreases and no change over time. The statistics that are listed include the following:

- **Number of years (n):** This is simply the number of years of data that were used to calculate annual means.
- **Intercept (a):** This is the value on the y-axis that the fitted line would have cross if the x-axis where zero.
- **Slope (b):** This is the rate at which the fitted line increases (positive number) or decreases (negative number).
- **Coefficient of determination (R²):** This value is an indication of how much variance above and below the fitted line there is in the data. This value ranges from 0 to 1. A high value means a tight fit and a low value means a loose fit.
- **Probability of Significance (p):** For most statistical analyses a p-value of less than 0.05 means the statistic is significant and analyses with p-values greater than 0.05 are not significant.

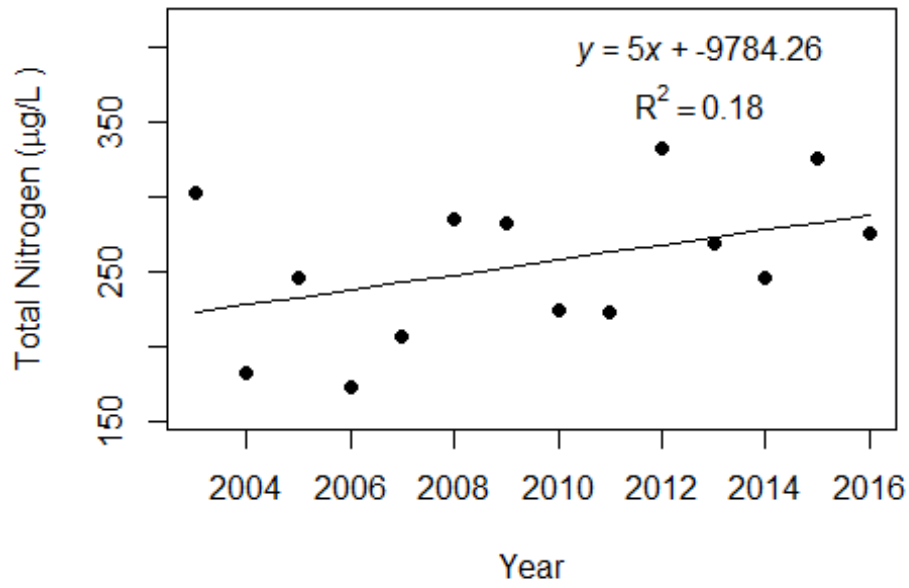
| Statistic | Total Phosphorus | Total Nitrogen | Chlorophyll | Secchi |
|--|------------------|----------------|-------------|----------|
| Number of Years (n) | 14 | 14 | 14 | 14 |
| Intercept (a) | -420 | -9784 | -61 | 53 |
| Slope (b) | 0.21 | 5.00 | 0.03 | -0.02 |
| Coefficient of Determination (R ²) | 0.29 | 0.18 | 0.03 | 0.01 |
| Probability of Significance (p) | 0.05 | 0.13 | 0.54 | 0.68 |
| Potential Trend | Increasing | No Trend | No Trend | No Trend |

The following graphs on the next two pages are trend analyses examining regression between year and annual means of total phosphorus, total nitrogen, chlorophyll, and Secchi depth for Crooked Upper in Bay County. If there are no plots then there is less than five years of data, which is not enough for the analysis.

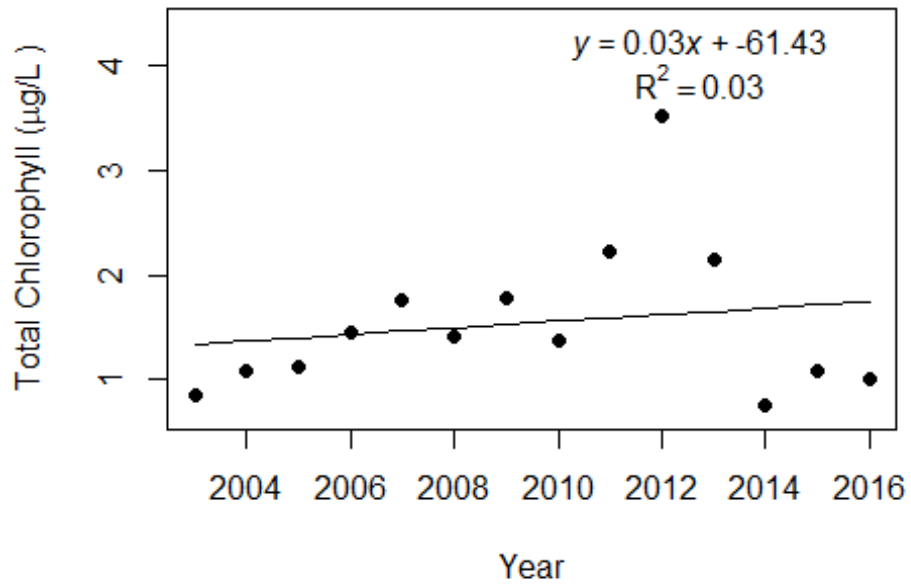
Crooked Upper (Bay)



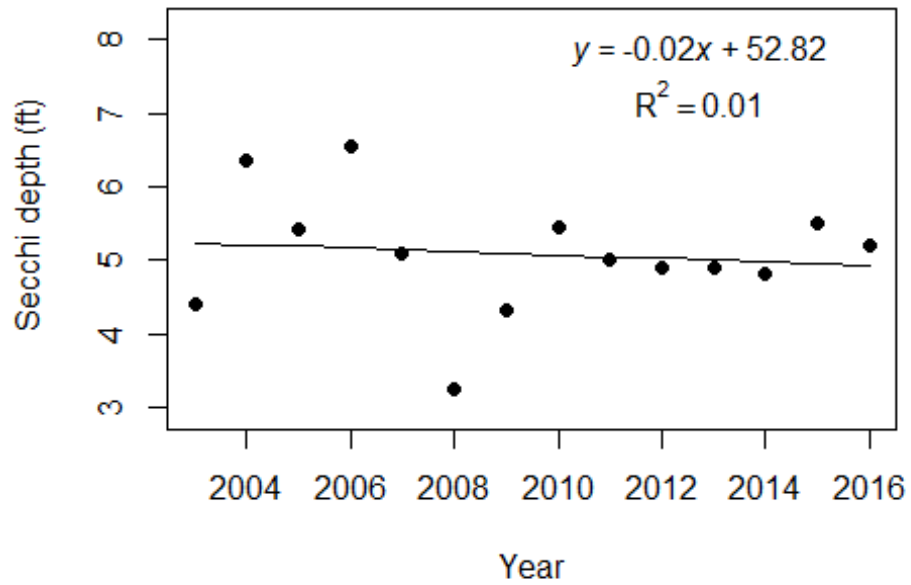
Crooked Upper (Bay)



Crooked Upper (Bay)



Crooked Upper (Bay)



LAKEWATCH Report for Powell Creek East-1 in Bay County Using Data Downloaded 10/17/2016

Introduction Streams

For many decades Florida has had a narrative nutrient water quality criterion in place to protect Florida's waters against nutrient over-enrichment. In 2009, the Florida Department of Environmental Protection (FDEP) initiated rulemaking and, by 2011, adopted what would be the first set of statewide numeric nutrient standards for Florida's waters. By 2015, almost all of the remaining waters in Florida have numeric nutrient standards (see for Florida Department of Environmental Regulation Nutrient Criteria's for: Streams, spring vents: <http://www.dep.state.fl.us/water/wqssp/nutrients/index.htm>).

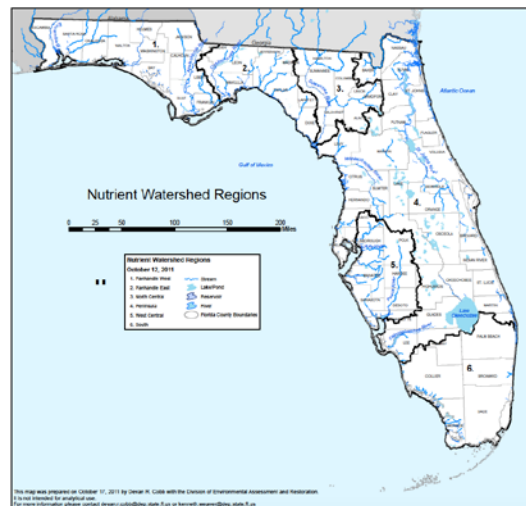


Figure 1. Map showing nutrient thresholds areas for streams set forth by FDEP.

Base File Data: Definitions

The long-term data summary will include the following parameters listed with a definition after each one:

- **County:** Name of county in which the stream resides.
- **Name:** Stream name that LAKEWATCH uses for the system.
- **Latitude and Longitude:** Coordinates identifying the exact location of station 1 for each system.
- **Water Body Type:** Four different types of systems; lakes, estuaries, streams and springs.
- **Period of Record (year):** Years a stream has been in the LAKEWATCH program.

| | |
|---------------------------|---------------------|
| County | Bay |
| Name | Powell Creek East-1 |
| Latitude | 30.2667 |
| Longitude | -85.9556 |
| Water Body Type | Stream |
| Period of Record (year) | 2001 to 2016 |
| Nutrient Watershed Region | Panhandle West |

LAKEWATCH Report for Powell Creek East-1 in Bay County Using Data Downloaded 10/17/2016

The nutrient thresholds for streams set forth by FDEP are listed in table below along with the map showing zones.

| Nutrient Watershed Region | Total Phosphorus Nutrient Threshold ¹ | Total Nitrogen Nutrient Threshold ¹ |
|---------------------------|---|---|
| Panhandle West | 60 µg/L | 670 µg/L |
| Panhandle East | 180 µg/L | 1030 µg/L |
| North Central | 300 µ/L | 1870 µg/L |
| Peninsular | 120 µg/L | 1540 µg/L |
| West Central | 490 µg/L | 1650 µg/L |
| South Florida | No numeric nutrient threshold. The narrative criterion in paragraph 62-302.530(47)(b), F.A.C., applies. | No numeric nutrient threshold. The narrative criterion in paragraph 62-302.530(47)(b), F.A.C., applies. |

¹These values are annual geometric mean concentrations not to be exceeded more than once in any three calendar year periods.

Long-Term Data Summary Streams: Definitions

The following long-term data are the primary trophic state parameters collected by LAKEWATCH volunteers and classification variables color and specific conductance (LAKEWATCH recently began analyzing samples quarterly for color and specific conductance):

- **Total Phosphorus (µg/L):** The nutrient most often limiting growth of plant/algae in Florida's fresh and saltwater environments.
- **Total Nitrogen (µg/L):** Another nutrient needed for aquatic plant/algae growth but only limiting when nitrogen to phosphorus ratios are generally less than 10.
- **Chlorophyll-uncorrected (µg/L):** Chlorophyll concentrations are used to measure relative abundances of open water algal population.
- **Secchi (ft), Secchi (m):** Secchi measurements are estimates of water clarity (how far one can see into the water) and are listed with English and metric units.
- **Color (Pt-Co Units):** LAKEWATCH measures true color, which is the color of the water after particles have been filter out.
- **Specific Conductance (µS/cm@25°C):** Measurement of the ability of water to conduct electricity and can be used to estimate the amount of dissolve materials in water.

Long-Term Data Summary Streams: Data

| Parameter | Minimum and Maximum Annual Means | Mean of Annual Means (Sampling years) |
|-----------------------------------|----------------------------------|---------------------------------------|
| Total Phosphorus (µg/L) | 11 - 23 | 14 (16) |
| Total Nitrogen (µg/L) | 301 - 636 | 406 (16) |
| Chlorophyll- uncorrected (µg/L) | 3.4 - 5.9 | 4.3 (16) |
| Secchi (ft) | 2.7 - 5.1 | 3.8 (16) |
| Secchi (m) | 0.8 - 1.6 | 1.2 (16) |
| Color (Pt-Co Units) | 13 - 221 | 59 (16) |
| Specific Conductance (µS/cm@25 C) | 6456 - 36000 | 19506 (11) |

LAKEWATCH Report for Powell Creek East-1 in Bay County Using Data Downloaded 10/17/2016

Trend Analyses Streams

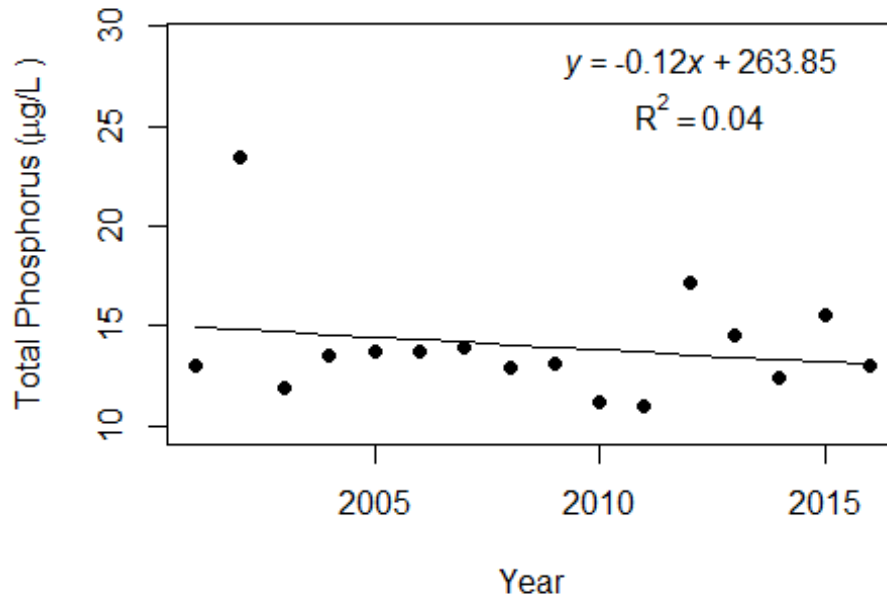
The following data are for linear regression statistics derived by plotting annual average total phosphorus, total nitrogen, chlorophyll, and Secchi data by year of data collection. Linear regression analysis is a common statistical approach used to determine if significant trends are occurring over time. These analyses define statistics based on the best fit line drawn through the data after plotting them with year on the horizontal line (x-axis) and the data value on the vertical line (y-axis). Figure 2 shows example plots with linear regression statistic of lakes that show significant total phosphorus increases, decreases and no change over time. The statistics that are listed include the following:

- **Number of years (n):** This is simply the number of years of data that were used to calculate annual means.
- **Intercept (a):** This is the value on the y-axis that the fitted line would have cross if the x-axis where zero.
- **Slope (b):** This is the rate at which the fitted line increases (positive number) or decreases (negative number).
- **Coefficient of determination (R²):** This value is an indication of how much variance above and below the fitted line there is in the data. This value ranges from 0 to 1. A high value means a tight fit and a low value means a loose fit.
- **Probability of Significance (p):** For most statistical analyses a p-value of less than 0.05 means the statistic is significant and analyses with p-values greater than 0.05 are not significant.

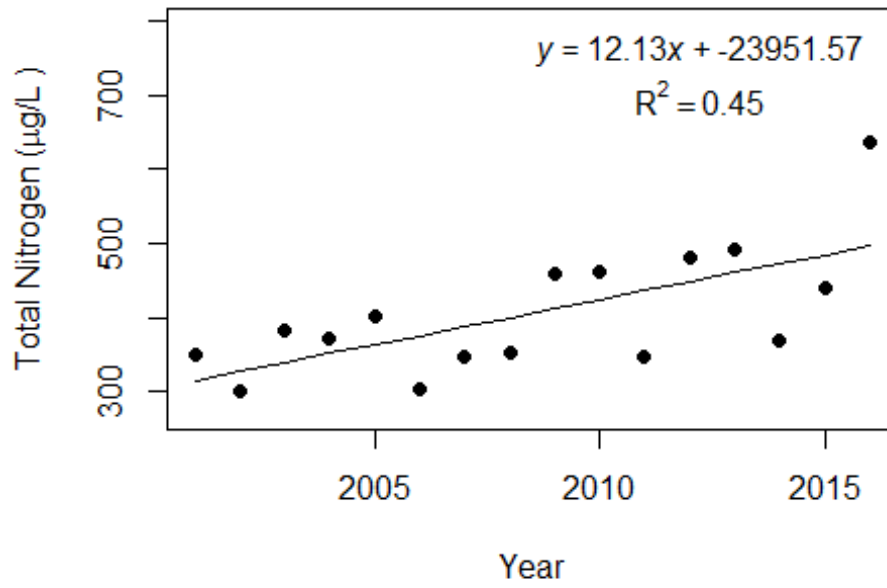
| Statistic | Total Phosphorus | Total Nitrogen | Chlorophyll | Secchi |
|--|------------------|----------------|-------------|----------|
| Number of Years (n) | 16 | 16 | 16 | 16 |
| Intercept (a) | 264 | -23952 | -42 | -101 |
| Slope (b) | -0.12 | 12.13 | 0.02 | 0.05 |
| Coefficient of Determination (R ²) | 0.04 | 0.45 | 0.02 | 0.12 |
| Probability of Significance (p) | 0.46 | 0.00 | 0.58 | 0.20 |
| Potential Trend | No Trend | Increasing | No Trend | No Trend |

The following graphs on the next two pages are trend analyses examining regression between year and annual means of total phosphorus, total nitrogen, chlorophyll, and Secchi depth for Powell Creek East-1 in Bay County. If there are no plots then there is less than five years of data, which is not enough for the analysis.

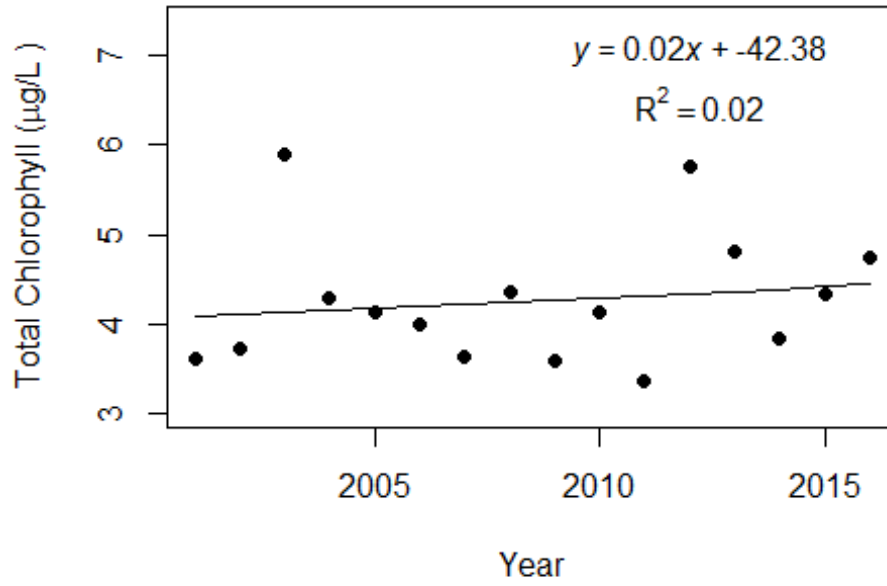
Powell Creek East-1 (Bay)



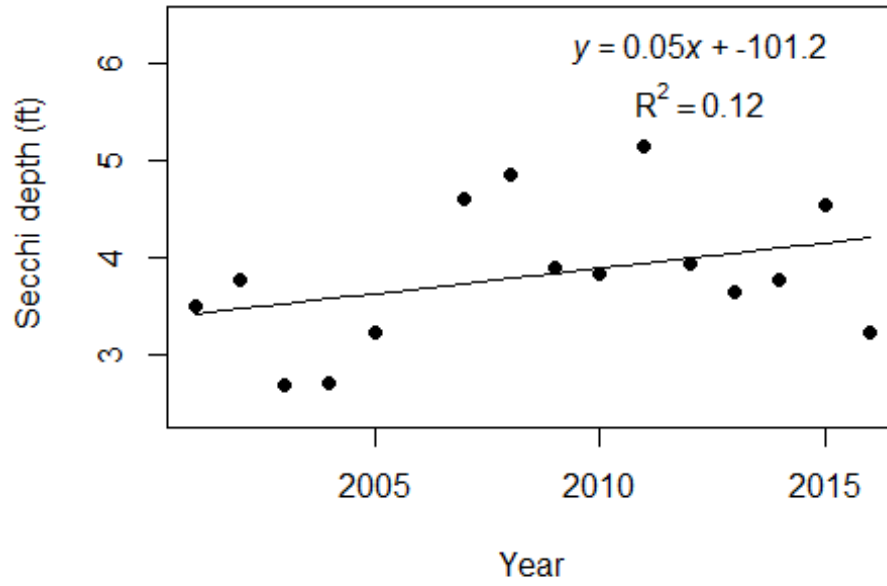
Powell Creek East-1 (Bay)



Powell Creek East-1 (Bay)



Powell Creek East-1 (Bay)



LAKEWATCH Report for Powell Creek East-2 in Bay County Using Data Downloaded 10/17/2016

Introduction Streams

For many decades Florida has had a narrative nutrient water quality criterion in place to protect Florida's waters against nutrient over-enrichment. In 2009, the Florida Department of Environmental Protection (FDEP) initiated rulemaking and, by 2011, adopted what would be the first set of statewide numeric nutrient standards for Florida's waters. By 2015, almost all of the remaining waters in Florida have numeric nutrient standards (see for Florida Department of Environmental Regulation Nutrient Criteria's for: Streams, spring vents: <http://www.dep.state.fl.us/water/wqssp/nutrients/index.htm>).

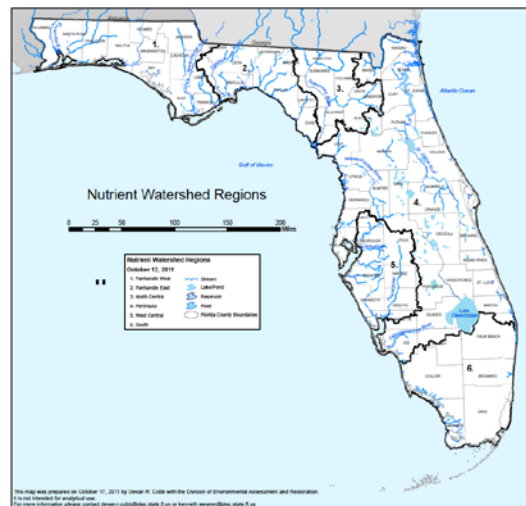


Figure 1. Map showing nutrient thresholds areas for streams set forth by FDEP.

Base File Data: Definitions

The long-term data summary will include the following parameters listed with a definition after each one:

- **County:** Name of county in which the stream resides.
- **Name:** Stream name that LAKEWATCH uses for the system.
- **Latitude and Longitude:** Coordinates identifying the exact location of station 1 for each system.
- **Water Body Type:** Four different types of systems; lakes, estuaries, streams and springs.
- **Period of Record (year):** Years a stream has been in the LAKEWATCH program.

| | |
|---------------------------|---------------------|
| County | Bay |
| Name | Powell Creek East-2 |
| Latitude | 30.2618 |
| Longitude | -85.9502 |
| Water Body Type | Stream |
| Period of Record (year) | 2001 to 2016 |
| Nutrient Watershed Region | Panhandle West |

LAKEWATCH Report for Powell Creek East-2 in Bay County Using Data Downloaded 10/17/2016

The nutrient thresholds for streams set forth by FDEP are listed in table below along with the map showing zones.

| Nutrient Watershed Region | Total Phosphorus Nutrient Threshold ¹ | Total Nitrogen Nutrient Threshold ¹ |
|---------------------------|---|---|
| Panhandle West | 60 µg/L | 670 µg/L |
| Panhandle East | 180 µg/L | 1030 µg/L |
| North Central | 300 µ/L | 1870 µg/L |
| Peninsular | 120 µg/L | 1540 µg/L |
| West Central | 490 µg/L | 1650 µg/L |
| South Florida | No numeric nutrient threshold. The narrative criterion in paragraph 62-302.530(47)(b), F.A.C., applies. | No numeric nutrient threshold. The narrative criterion in paragraph 62-302.530(47)(b), F.A.C., applies. |

¹These values are annual geometric mean concentrations not to be exceeded more than once in any three calendar year periods.

Long-Term Data Summary Streams: Definitions

The following long-term data are the primary trophic state parameters collected by LAKEWATCH volunteers and classification variables color and specific conductance (LAKEWATCH recently began analyzing samples quarterly for color and specific conductance):

- **Total Phosphorus (µg/L):** The nutrient most often limiting growth of plant/algae in Florida's fresh and saltwater environments.
- **Total Nitrogen (µg/L):** Another nutrient needed for aquatic plant/algae growth but only limiting when nitrogen to phosphorus ratios are generally less than 10.
- **Chlorophyll-uncorrected (µg/L):** Chlorophyll concentrations are used to measure relative abundances of open water algal population.
- **Secchi (ft), Secchi (m):** Secchi measurements are estimates of water clarity (how far one can see into the water) and are listed with English and metric units.
- **Color (Pt-Co Units):** LAKEWATCH measures true color, which is the color of the water after particles have been filter out.
- **Specific Conductance (µS/cm@25°C):** Measurement of the ability of water to conduct electricity and can be used to estimate the amount of dissolve materials in water.

Long-Term Data Summary Streams: Data

| Parameter | Minimum and Maximum Annual Means | Mean of Annual Means (Sampling years) |
|-----------------------------------|----------------------------------|---------------------------------------|
| Total Phosphorus (µg/L) | 8 - 19 | 13 (16) |
| Total Nitrogen (µg/L) | 344 - 804 | 495 (16) |
| Chlorophyll- uncorrected (µg/L) | 1.4 - 6.9 | 3.8 (16) |
| Secchi (ft) | 2.1 - 5.7 | 3.7 (16) |
| Secchi (m) | 0.6 - 1.7 | 1.1 (16) |
| Color (Pt-Co Units) | 21 - 278 | 112 (16) |
| Specific Conductance (µS/cm@25 C) | 115 - 30000 | 8780 (12) |

LAKEWATCH Report for Powell Creek East-2 in Bay County Using Data Downloaded 10/17/2016

Trend Analyses Streams

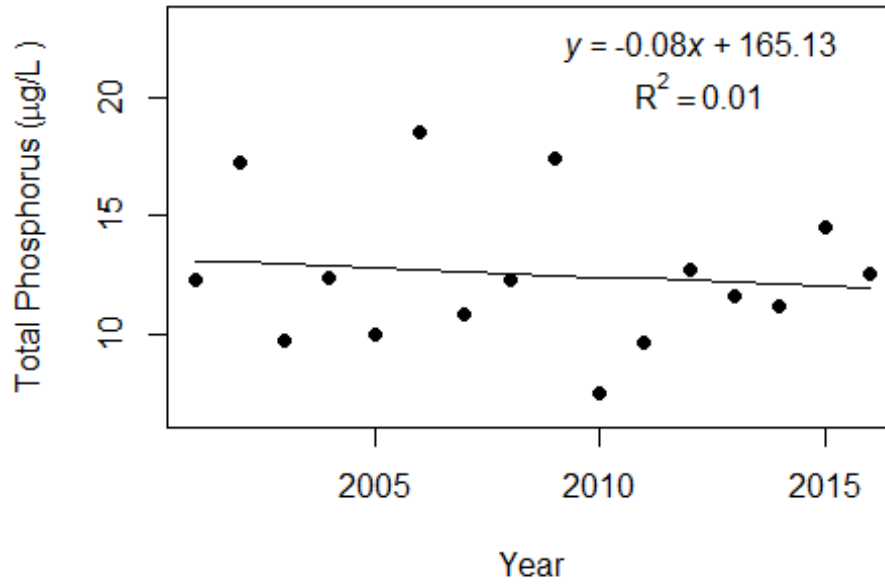
The following data are for linear regression statistics derived by plotting annual average total phosphorus, total nitrogen, chlorophyll, and Secchi data by year of data collection. Linear regression analysis is a common statistical approach used to determine if significant trends are occurring over time. These analyses define statistics based on the best fit line drawn through the data after plotting them with year on the horizontal line (x-axis) and the data value on the vertical line (y-axis). Figure 2 shows example plots with linear regression statistic of lakes that show significant total phosphorus increases, decreases and no change over time. The statistics that are listed include the following:

- **Number of years (n):** This is simply the number of years of data that were used to calculate annual means.
- **Intercept (a):** This is the value on the y-axis that the fitted line would have cross if the x-axis where zero.
- **Slope (b):** This is the rate at which the fitted line increases (positive number) or decreases (negative number).
- **Coefficient of determination (R²):** This value is an indication of how much variance above and below the fitted line there is in the data. This value ranges from 0 to 1. A high value means a tight fit and a low value means a loose fit.
- **Probability of Significance (p):** For most statistical analyses a p-value of less than 0.05 means the statistic is significant and analyses with p-values greater than 0.05 are not significant.

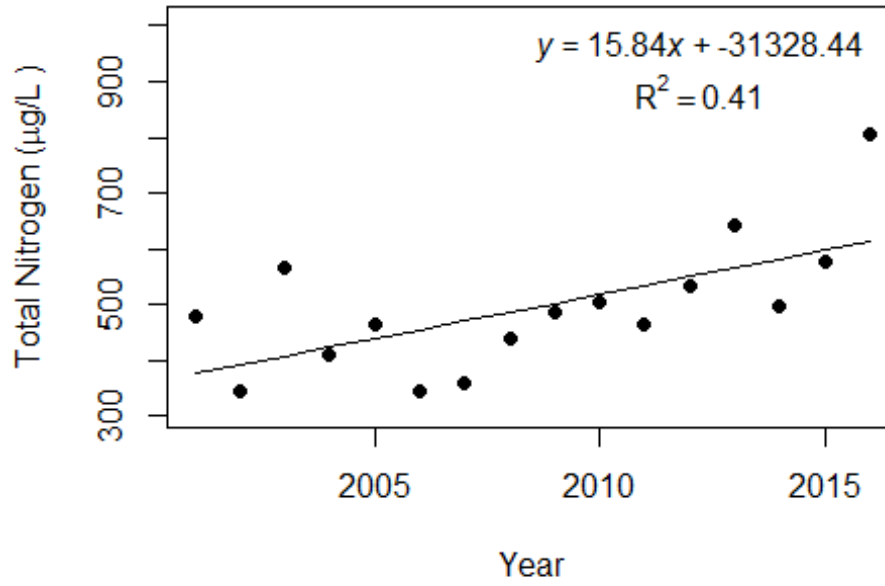
| Statistic | Total Phosphorus | Total Nitrogen | Chlorophyll | Secchi |
|--|------------------|----------------|-------------|----------|
| Number of Years (n) | 16 | 16 | 16 | 16 |
| Intercept (a) | 165 | -31328 | -19 | 169 |
| Slope (b) | -0.08 | 15.84 | 0.01 | -0.08 |
| Coefficient of Determination (R ²) | 0.01 | 0.41 | 0.00 | 0.20 |
| Probability of Significance (p) | 0.66 | 0.01 | 0.90 | 0.09 |
| Potential Trend | No Trend | Increasing | No Trend | No Trend |

The following graphs on the next two pages are trend analyses examining regression between year and annual means of total phosphorus, total nitrogen, chlorophyll, and Secchi depth for Powell Creek East-2 in Bay County. If there are no plots then there is less than five years of data, which is not enough for the analysis.

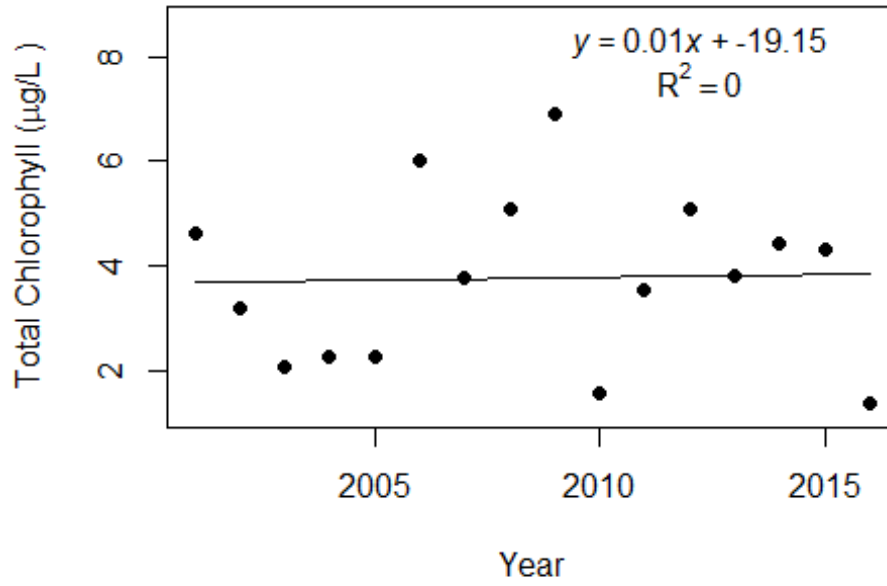
Powell Creek East-2 (Bay)



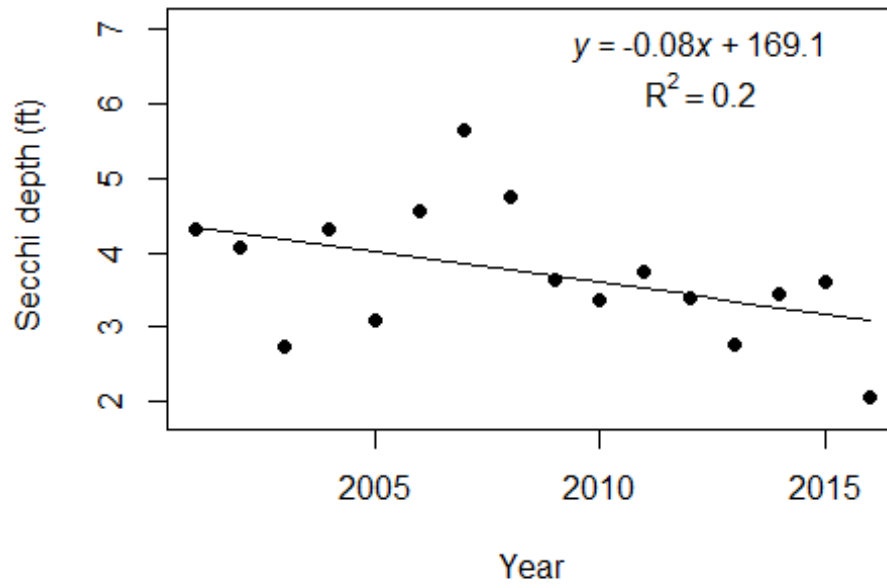
Powell Creek East-2 (Bay)



Powell Creek East-2 (Bay)



Powell Creek East-2 (Bay)



LAKEWATCH Report for Powell Creek East-3 in Bay County Using Data Downloaded 10/17/2016

Introduction Streams

For many decades Florida has had a narrative nutrient water quality criterion in place to protect Florida's waters against nutrient over-enrichment. In 2009, the Florida Department of Environmental Protection (FDEP) initiated rulemaking and, by 2011, adopted what would be the first set of statewide numeric nutrient standards for Florida's waters. By 2015, almost all of the remaining waters in Florida have numeric nutrient standards (see for Florida Department of Environmental Regulation Nutrient Criteria's for: Streams, spring vents: <http://www.dep.state.fl.us/water/wqssp/nutrients/index.htm>).

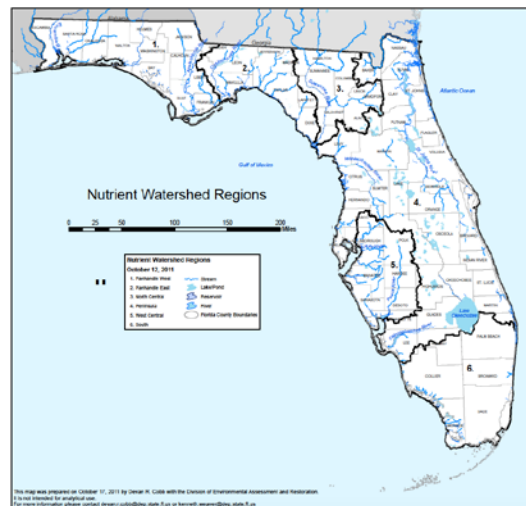


Figure 1. Map showing nutrient thresholds areas for streams set forth by FDEP.

Base File Data: Definitions

The long-term data summary will include the following parameters listed with a definition after each one:

- **County:** Name of county in which the stream resides.
- **Name:** Stream name that LAKEWATCH uses for the system.
- **Latitude and Longitude:** Coordinates identifying the exact location of station 1 for each system.
- **Water Body Type:** Four different types of systems; lakes, estuaries, streams and springs.
- **Period of Record (year):** Years a stream has been in the LAKEWATCH program.

| | |
|---------------------------|---------------------|
| County | Bay |
| Name | Powell Creek East-3 |
| Latitude | 30.2618 |
| Longitude | -85.9478 |
| Water Body Type | Stream |
| Period of Record (year) | 2001 to 2015 |
| Nutrient Watershed Region | Panhandle West |

LAKEWATCH Report for Powell Creek East-3 in Bay County Using Data Downloaded 10/17/2016

The nutrient thresholds for streams set forth by FDEP are listed in table below along with the map showing zones.

| Nutrient Watershed Region | Total Phosphorus Nutrient Threshold ¹ | Total Nitrogen Nutrient Threshold ¹ |
|---------------------------|---|---|
| Panhandle West | 60 µg/L | 670 µg/L |
| Panhandle East | 180 µg/L | 1030 µg/L |
| North Central | 300 µ/L | 1870 µg/L |
| Peninsular | 120 µg/L | 1540 µg/L |
| West Central | 490 µg/L | 1650 µg/L |
| South Florida | No numeric nutrient threshold. The narrative criterion in paragraph 62-302.530(47)(b), F.A.C., applies. | No numeric nutrient threshold. The narrative criterion in paragraph 62-302.530(47)(b), F.A.C., applies. |

¹These values are annual geometric mean concentrations not to be exceeded more than once in any three calendar year periods.

Long-Term Data Summary Streams: Definitions

The following long-term data are the primary trophic state parameters collected by LAKEWATCH volunteers and classification variables color and specific conductance (LAKEWATCH recently began analyzing samples quarterly for color and specific conductance):

- **Total Phosphorus (µg/L):** The nutrient most often limiting growth of plant/algae in Florida's fresh and saltwater environments.
- **Total Nitrogen (µg/L):** Another nutrient needed for aquatic plant/algae growth but only limiting when nitrogen to phosphorus ratios are generally less than 10.
- **Chlorophyll-uncorrected (µg/L):** Chlorophyll concentrations are used to measure relative abundances of open water algal population.
- **Secchi (ft), Secchi (m):** Secchi measurements are estimates of water clarity (how far one can see into the water) and are listed with English and metric units.
- **Color (Pt-Co Units):** LAKEWATCH measures true color, which is the color of the water after particles have been filter out.
- **Specific Conductance (µS/cm@25°C):** Measurement of the ability of water to conduct electricity and can be used to estimate the amount of dissolve materials in water.

Long-Term Data Summary Streams: Data

| Parameter | Minimum and Maximum Annual Means | Mean of Annual Means (Sampling years) |
|-----------------------------------|----------------------------------|---------------------------------------|
| Total Phosphorus (µg/L) | 7 - 16 | 11 (15) |
| Total Nitrogen (µg/L) | 348 - 708 | 504 (15) |
| Chlorophyll- uncorrected (µg/L) | 1.5 - 6.4 | 4.1 (15) |
| Secchi (ft) | 2.5 - 5.4 | 3.8 (15) |
| Secchi (m) | 0.7 - 1.6 | 1.2 (15) |
| Color (Pt-Co Units) | 28 - 209 | 113 (15) |
| Specific Conductance (µS/cm@25 C) | 400 - 28000 | 6672 (11) |

LAKEWATCH Report for Powell Creek East-3 in Bay County Using Data Downloaded 10/17/2016

Trend Analyses Streams

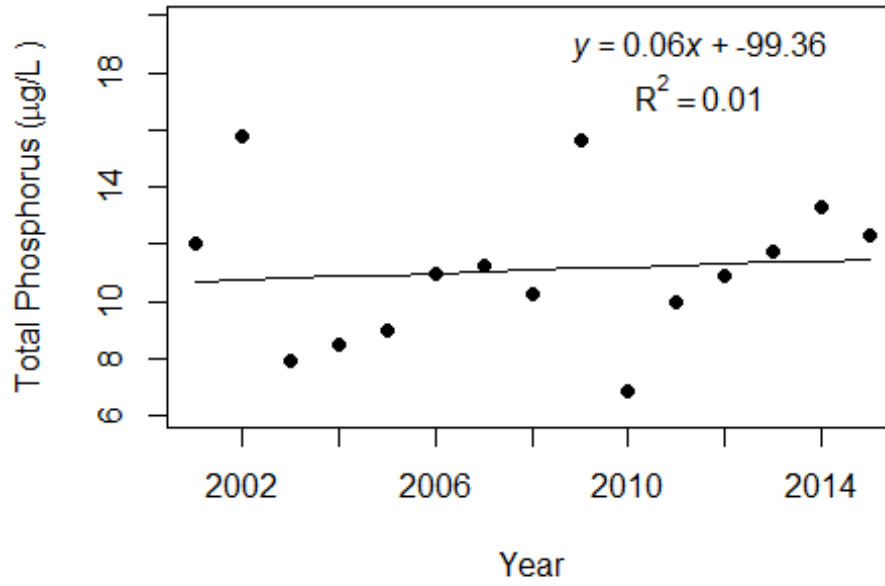
The following data are for linear regression statistics derived by plotting annual average total phosphorus, total nitrogen, chlorophyll, and Secchi data by year of data collection. Linear regression analysis is a common statistical approach used to determine if significant trends are occurring over time. These analyses define statistics based on the best fit line drawn through the data after plotting them with year on the horizontal line (x-axis) and the data value on the vertical line (y-axis). Figure 2 shows example plots with linear regression statistic of lakes that show significant total phosphorus increases, decreases and no change over time. The statistics that are listed include the following:

- **Number of years (n):** This is simply the number of years of data that were used to calculate annual means.
- **Intercept (a):** This is the value on the y-axis that the fitted line would have cross if the x-axis where zero.
- **Slope (b):** This is the rate at which the fitted line increases (positive number) or decreases (negative number).
- **Coefficient of determination (R²):** This value is an indication of how much variance above and below the fitted line there is in the data. This value ranges from 0 to 1. A high value means a tight fit and a low value means a loose fit.
- **Probability of Significance (p):** For most statistical analyses a p-value of less than 0.05 means the statistic is significant and analyses with p-values greater than 0.05 are not significant.

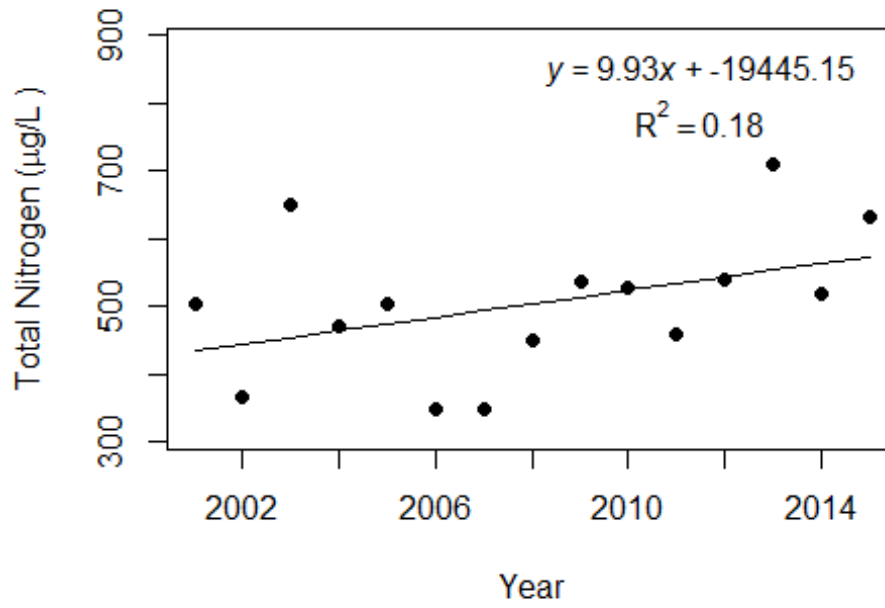
| Statistic | Total Phosphorus | Total Nitrogen | Chlorophyll | Secchi |
|--|------------------|----------------|-------------|----------|
| Number of Years (n) | 15 | 15 | 15 | 15 |
| Intercept (a) | -99 | -19445 | -357 | 140 |
| Slope (b) | 0.06 | 9.93 | 0.18 | -0.07 |
| Coefficient of Determination (R ²) | 0.01 | 0.18 | 0.25 | 0.10 |
| Probability of Significance (p) | 0.73 | 0.12 | 0.06 | 0.24 |
| Potential Trend | No Trend | No Trend | No Trend | No Trend |

The following graphs on the next two pages are trend analyses examining regression between year and annual means of total phosphorus, total nitrogen, chlorophyll, and Secchi depth for Powell Creek East-3 in Bay County. If there are no plots then there is less than five years of data, which is not enough for the analysis.

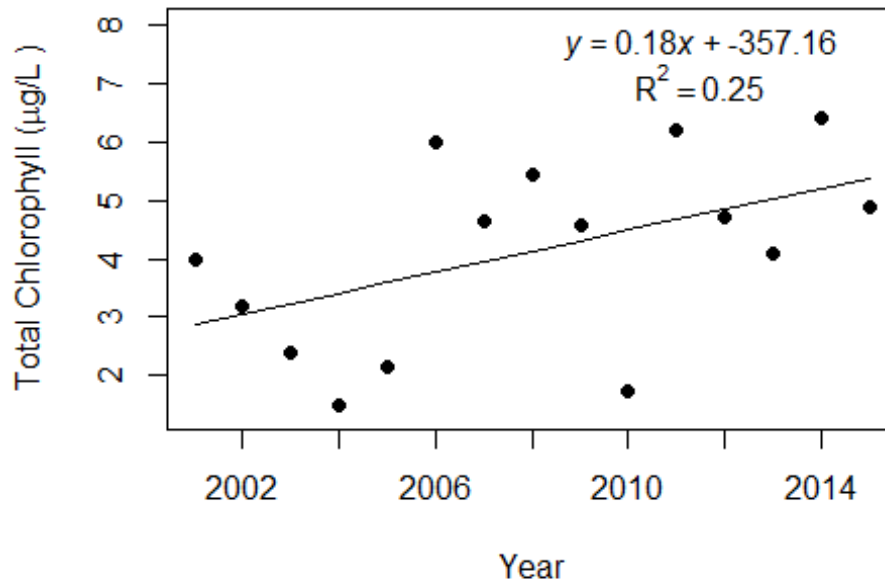
Powell Creek East-3 (Bay)



Powell Creek East-3 (Bay)



Powell Creek East-3 (Bay)



Powell Creek East-3 (Bay)

